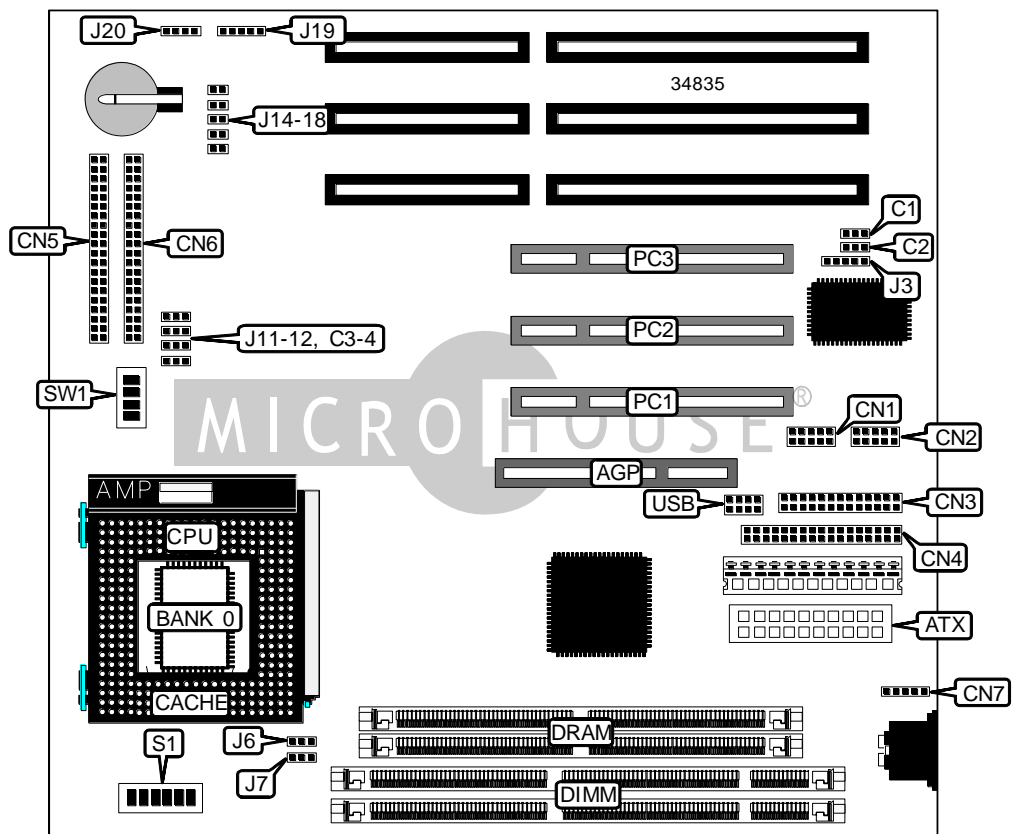


ACHITEC CORPORATION, LTD.  
 ACHI-156

<b>Device Type</b>	Mainboard
<b>Processor</b>	CX 6X86/IBM 6X86/CX 686MX/IBM 6X86MX/IDT/AM K5/ AM K6/Pentium
<b>Processor Speed</b>	120/133/150/166/180/200/233/266/300/333MHz
<b>Chip Set</b>	VIA
<b>Video Chip Set</b>	None
<b>Maximum Onboard Memory</b>	1GB (EDO & SDRAM supported)
<b>Maximum Video Memory</b>	None
<b>Cache</b>	512KB
<b>BIOS</b>	Award
<b>Dimensions</b>	220mm x 220mm
<b>I/O Options</b>	32-bit PCI slots (3), floppy drive interface, IDE interfaces (2), parallel port, PS/2 mouse interface, serial ports (2), IR connector, USB connector, ATX power connector, AGP slot
<b>NPU Options</b>	None



Continued on next page. . .

ACHITEC CORPORATION, LTD.  
 ACHI - 156

... continued from previous page

CONNECTIONS			
Purpose	Location	Purpose	Location
AGP slot	AGP	IDE interface LED	J14
ATX power connector	ATX	Soft off power supply	J15
Serial port	CN1	Reset switch	J16
Serial port	CN2	Green PC LED	J17
Parallel port	CN3	Turbo switch	J18
Floppy drive interface	CN4	Power LED & keylock	J19
IDE interface	CN5	Speaker	J20
IDE interface	CN6	32-bit PCI slots	PC1 - PC3
PS/2 mouse interface	CN7	USB connector	USB
IR connector	J3		

USER CONFIGURABLE SETTINGS		
Function	Label	Position
í Factory configured - do not alter	C1	Unidentified
í Factory configured - do not alter	C2	Unidentified
í Factory configured - do not alter	C3	Unidentified
í Factory configured - do not alter	C4	Unidentified
Power supply select AT	J11	Pins 1 & 2 closed
Power supply select ATX	J11	Pins 2 & 3 closed
í CMOS memory normal operation	J12	Pins 1 & 2 closed
CMOS memory clear	J12	Pins 2 & 3 closed

SIMM CONFIGURATION	
Size	Bank 0
8MB	(2) 1M x 36
16MB	(2) 2M x 36
32MB	(2) 4M x 36
64MB	(2) 8M x 36
128MB	(2) 16M x 36
256MB	(2) 32M x 36
512MB	(2) 64M x 36
Note: Board accepts EDO memory.	

Continued on next page...

ACHITEC CORPORATION, LTD.  
 ACHI-156

... continued from previous page

DIMM CONFIGURATION		
Size	Bank 0	Bank 1
8MB	(1) 1M x 64	None
16MB	(1) 2M x 64	None
16MB	(1) 1M x 64	(1) 1M x 64
24MB	(1) 2M x 64	(1) 1M x 64
32MB	(1) 4M x 64	None
32MB	(1) 2M x 64	(1) 2M x 64
40MB	(1) 4M x 64	(1) 1M x 64
48MB	(1) 4M x 64	(1) 2M x 64
64MB	(1) 8M x 64	None
64MB	(1) 4M x 64	(1) 4M x 64
72MB	(1) 8M x 64	(1) 1M x 64
80MB	(1) 8M x 64	(1) 2M x 64
96MB	(1) 8M x 64	(1) 4M x 64
128MB	(1) 16M x 64	None
128MB	(1) 8M x 64	(1) 8M x 64
136MB	(1) 16M x 64	(1) 1M x 64
144MB	(1) 16M x 64	(1) 2M x 64
160MB	(1) 16M x 64	(1) 4M x 64
192MB	(1) 16M x 64	(1) 8M x 64
256MB	(1) 32M x 64	None
256MB	(1) 16M x 64	(1) 16M x 64
264MB	(1) 32M x 64	(1) 1M x 64
272MB	(1) 32M x 64	(1) 2M x 64
288MB	(1) 32M x 64	(1) 4M x 64
320MB	(1) 32M x 64	(1) 8M x 64
384MB	(1) 32M x 64	(1) 16M x 64
512MB	(1) 32M x 64	(1) 32M x 64
512MB	(1) 64M x 64	None
520MB	(1) 64M x 64	(1) 1M x 64
528MB	(1) 64M x 64	(1) 2M x 64
544MB	(1) 64M x 64	(1) 4M x 64
576MB	(1) 64M x 64	(1) 8M x 64
640MB	(1) 64M x 64	(1) 16M x 64
768MB	(1) 64M x 64	(1) 32M x 64
1024MB	(1) 64M x 64	(1) 64M x 64

Note: Board accepts SDRAM memory.

Continued on next page. . .

ACHITEC CORPORATION, LTD.  
 ACHI-156

... continued from previous page

DIMM VOLTAGE CONFIGURATION		
Voltage	J6	J7
3.3v	Pins 2 & 3 closed	Pins 2 & 3 closed
5v	Pins 1 & 2 closed	Pins 1 & 2 closed

CACHE CONFIGURATION	
Size	Bank 0
512KB	(1) 64K x 64

CPU SPEED SELECTION (CX 6X86)								
CPU speed	Clock speed	Multiplier	S1/1	S1/2	S1/3	S1/4	S1/5	S1/6
150MHz	60MHz	2x	On	Off	Off	Off	On	On
166MHz	66MHz	2x	On	Off	Off	On	Off	On
166MHz	60MHz	2.5x	On	On	Off	Off	On	On
200MHz	75MHz	2x	On	Off	Off	Off	On	Off

CPU SPEED SELECTION (IBM 6X86)								
CPU speed	Clock speed	Multiplier	S1/1	S1/2	S1/3	S1/4	S1/5	S1/6
150MHz	60MHz	2x	On	Off	Off	Off	On	On
166MHz	66MHz	2x	On	Off	Off	On	Off	On
166MHz	60MHz	2.5x	On	On	Off	Off	On	On
200MHz	75MHz	2x	On	Off	Off	Off	On	Off

CPU SPEED SELECTION (CX 6X86MX)								
CPU speed	Clock speed	Multiplier	S1/1	S1/2	S1/3	S1/4	S1/5	S1/6
233MHz	75MHz	2.5x	On	On	Off	Off	On	Off
233MHz	66MHz	3x	Off	On	Off	On	Off	On
266MHz	75MHz	3x	Off	On	Off	Off	On	Off
266MHz	66MHz	3.5x	Off	Off	Off	On	Off	On

CPU SPEED SELECTION (IBM 6X86MX)								
CPU speed	Clock speed	Multiplier	S1/1	S1/2	S1/3	S1/4	S1/5	S1/6
233MHz	75MHz	2.5x	On	On	Off	Off	On	Off
233MHz	66MHz	3x	Off	On	Off	On	Off	On
266MHz	75MHz	3x	Off	On	Off	Off	On	Off
266MHz	66MHz	3.5x	Off	Off	Off	On	Off	On

Continued on next page...

ACHITEC CORPORATION, LTD.  
 ACHI - 156

... continued from previous page

CPU SPEED SELECTION (IDT)								
CPU speed	Clock speed	Multiplier	S1/1	S1/2	S1/3	S1/4	S1/5	S1/6
180MHz	60MHz	3x	Off	On	Off	Off	On	On
200MHz	66MHz	3x	Off	On	Off	On	Off	On

CPU SPEED SELECTION (AM K5)								
CPU speed	Clock speed	Multiplier	S1/1	S1/2	S1/3	S1/4	S1/5	S1/6
120MHz	60MHz	2x	On	Off	Off	Off	On	On
133MHz	66MHz	2x	On	Off	Off	On	Off	On
150MHz	60MHz	2.5x	On	On	Off	Off	On	On
166MHz	66MHz	2.5x	On	On	Off	On	Off	On

CPU SPEED SELECTION (AM K6)								
CPU speed	Clock speed	Multiplier	S1/1	S1/2	S1/3	S1/4	S1/5	S1/6
166MHz	66MHz	2.5x	On	On	Off	On	Off	On
180MHz	60MHz	3x	Off	On	Off	Off	On	On
200MHz	66MHz	3x	Off	On	Off	On	Off	On
233MHz	66MHz	3.5x	Off	Off	Off	On	Off	On
266MHz	66MHz	4x	On	On	On	On	Off	On
300MHz	66MHz	4.5x	On	On	On	On	Off	On
333MHz	66MHz	5x	Off	On	On	On	Off	On

CPU SPEED SELECTION (INTEL)								
CPU speed	Clock speed	Multiplier	S1/1	S1/2	S1/3	S1/4	S1/5	S1/6
120MHz	60MHz	2x	On	Off	Off	Off	On	On
133MHz	66MHz	2x	On	Off	Off	On	Off	On
150MHz	60MHz	2.5x	On	On	Off	Off	On	On
166MHz	66MHz	2.5x	On	On	Off	On	Off	On
180MHz	60MHz	3x	Off	On	Off	Off	On	On
200MHz	66MHz	3x	Off	On	Off	On	Off	On

CPU SPEED SELECTION (INTEL MMX)								
CPU speed	Clock speed	Multiplier	S1/1	S1/2	S1/3	S1/4	S1/5	S1/6
180MHz	60MHz	3x	Off	On	Off	Off	On	On
200MHz	66MHz	3x	Off	On	Off	On	Off	On
233MHz	66MHz	3.5x	Off	Off	Off	On	Off	On
266MHz	66MHz	4x	On	On	On	On	Off	On
300MHz	66MHz	4.5x	On	On	On	On	Off	On
333MHz	66MHz	5x	Off	On	On	On	Off	On

Continued on next page...

ACHITEC CORPORATION, LTD.  
ACHI - 156

... continued from previous page

CPU VOLTAGE SELECTION				
Voltage	SW1/1	SW1/2	SW1/3	SW1/4
2.0	Off	Off	Off	Off
2.1	On	Off	Off	Off
2.2	Off	On	Off	Off
2.3	On	On	Off	Off
2.4	Off	Off	On	Off
2.5	On	Off	On	Off
2.6	Off	On	On	Off
2.7	On	On	On	Off
2.8	Off	Off	Off	On
2.9	On	Off	Off	On
3.0	Off	On	Off	On
3.1	On	On	Off	On
3.2	Off	Off	On	On
3.3	On	Off	On	On
3.4	Off	On	On	On
3.5	On	On	On	On