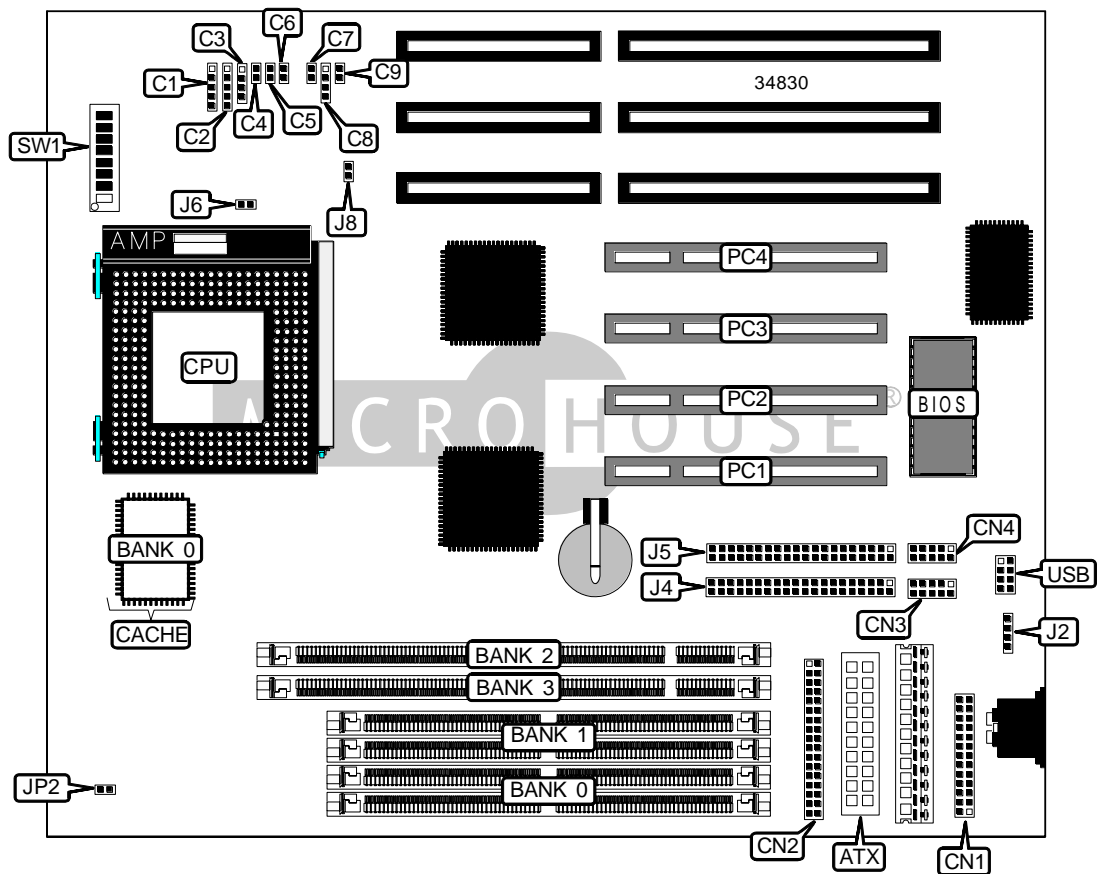


GIGA-BYTE TECHNOLOGY CO., LTD.

GA - 5 8 6 T 2

Device Type	Mainboard
Processor	CX 6X86/IBM 6X86/CX 6X86L/IBM 6X86L/CX 686MX/IBM 6X86MX/ AM K5/AM K6/Pentium
Processor Speed	90/100/120/133/150/166/180/200/233MHz
Chip Set	Unidentified
Video Chip Set	None
Maximum Onboard Memory	256MB (EDO & SDRAM supported)
Maximum Video Memory	None
Cache	512KB
BIOS	Award
Dimensions	280mm x 220mm
I/O Options	32-bit PCI slots (4), floppy drive interface, green PC connector, IDE interfaces (2), parallel port, PS/2 mouse interface, serial ports (2), IR connector, USB connector, ATX power connector
NPU Options	None



Continued on next page . . .

GIGA-BYTE TECHNOLOGY CO., LTD.
GA - 586T2

... continued from previous page

CONNECTIONS			
Purpose	Location	Purpose	Location
ATX power connector	ATX	Parallel port	CN1
IR connector	C1	Floppy drive interface	CN2
Power LED & keylock	C2	Serial port 2	CN3
Speaker	C3	Serial port 1	CN4
Turbo LED	C4	PS/2 mouse interface	J2
Turbo switch	C5	IDE interface 2	J4
Reset switch	C6	IDE interface 1	J5
Green PC connector	C7	Chassis fan power	J6
IDE interface LED	C8	32-bit PCI slots	PC1 - -PC4
Soft off power supply	C9	USB connector	USB

USER CONFIGURABLE SETTINGS		
Function	Label	Position
ATX select system after AC back: full on	J8	Closed
ATX select system after AC back: sat off	J8	Open
í Factory configured - do not alter	SW1/8	On

DIMM CONFIGURATION				
Size	Bank 0	Bank 1	Bank 2	Bank 3
8MB	(2) 1M x 36	None	None	None
8MB	None	None	(1) 1M x 64	None
16MB	(2) 2M x 36	None	None	None
16MB	None	None	(1) 2M x 64	None
16MB	(2) 1M x 36	(2) 1M x 36	None	None
16MB	(2) 1M x 36	None	None	(1) 1M x 64
16MB	None	None	(1) 1M x 64	(1) 1M x 64
24MB	None	(2) 1M x 36	(1) 2M x 64	None
24MB	None	(2) 2M x 36	(1) 1M x 64	None
24MB	(2) 2M x 36	(2) 1M x 36	None	None
24MB	None	None	(1) 1M x 64	(1) 2M x 64
24MB	None	(2) 1M x 36	(1) 1M x 64	(1) 1M x 64
32MB	None	None	(1) 2M x 64	(1) 2M x 64
32MB	None	(2) 1M x 36	(1) 1M x 64	(1) 2M x 64
32MB	None	(2) 2M x 36	(1) 1M x 64	(1) 1M x 64
32MB	(2) 4M x 36	None	None	None
32MB	None	None	(1) 4M x 64	None
32MB	(2) 2M x 36	(2) 2M x 36	None	None

Continued on next page...

GIGA-BYTE TECHNOLOGY CO., LTD.
GA - 5 8 6 T 2

... continued from previous page

DIMM/SIMM CONFIGURATION (CON'T)				
Size	Bank 0	Bank 1	Bank 2	Bank 3
32MB	None	(2) 2M x 36	(1) 2M x 64	None
40MB	None	(2) 1M x 36	(1) 4M x 64	None
40MB	(2) 4M x 36	(2) 1M x 36	None	None
40MB	None	(2) 1M x 36	(1) 2M x 64	(1) 2M x 64
40MB	None	(2) 2M x 36	(1) 1M x 64	(1) 2M x 64
40MB	None	None	(1) 1M x 64	(1) 4M x 64
40MB	None	(2) 4M x 36	(1) 1M x 64	None
48MB	None	None	(1) 2M x 64	(1) 4M x 64
48MB	None	(2) 1M x 36	(1) 1M x 64	(1) 4M x 64
48MB	None	(2) 2M x 36	(1) 2M x 64	(1) 2M x 64
48MB	None	(2) 4M x 36	(1) 1M x 64	(1) 1M x 64
48MB	(2) 4M x 36	(2) 2M x 36	None	None
48MB	None	(2) 2M x 36	(1) 4M x 64	None
48MB	None	(2) 4M x 36	(1) 2M x 64	None
56MB	None	(2) 1M x 36	(1) 2M x 64	(1) 4M x 64
56MB	None	(2) 2M x 36	(1) 1M x 64	(1) 4M x 64
56MB	None	(2) 4M x 36	(1) 2M x 64	(1) 1M x 64
64MB	None	None	(1) 4M x 64	(1) 4M x 64
64MB	None	(2) 2M x 36	(1) 2M x 64	(1) 4M x 64
64MB	None	(2) 4M x 36	(1) 2M x 64	(1) 2M x 64
64MB	(2) 8M x 36	None	None	None
64MB	None	None	(1) 8M x 64	None
64MB	(2) 4M x 36	(2) 4M x 36	None	None
64MB	None	(2) 4M x 36	(1) 4M x 64	None
72MB	(2) 8M x 36	(2) 1M x 36	None	None
72MB	None	(2) 8M x 36	(1) 1M x 64	None
72MB	None	(2) 1M x 36	(1) 4M x 64	(1) 4M x 64
72MB	None	(2) 4M x 36	(1) 1M x 64	(1) 4M x 64
72MB	None	None	(1) 1M x 64	(1) 8M x 64
80MB	None	None	(1) 2M x 64	(1) 8M x 64
80MB	None	(2) 2M x 36	(1) 4M x 64	(1) 4M x 64
80MB	None	(2) 4M x 36	(1) 2M x 64	(1) 4M x 64
80MB	None	(2) 8M x 36	(1) 1M x 64	(1) 1M x 64
80MB	(2) 8M x 36	(2) 2M x 36	None	None
80MB	None	(2) 8M x 36	(1) 2M x 64	None
88MB	None	(2) 8M x 36	(1) 1M x 64	(1) 2M x 64
96MB	None	None	(1) 4M x 64	(1) 8M x 64

Continued on next page. . .

GIGA-BYTE TECHNOLOGY CO., LTD.
GA - 586 T 2

... continued from previous page

DIMM/SIMM CONFIGURATION (CON'T)				
Size	Bank 0	Bank 1	Bank 2	Bank 3
96MB	None	(2) 4M x 36	(1) 4M x 64	(1) 4M x 64
96MB	None	(2) 8M x 36	(1) 2M x 64	(1) 2M x 64
96MB	(2) 4M x 36	(2) 8M x 36	None	None
96MB	None	(2) 8M x 36	(1) 4M x 64	None
104MB	None	(2) 8M x 36	(1) 1M x 64	(1) 4M x 64
112MB	None	(2) 8M x 36	(1) 2M x 64	(1) 4M x 64
128MB	(2) 16M x 36	None	None	None
128MB	(2) 8M x 36	(2) 8M x 36	None	None
128MB	None	(2) 8M x 36	(1) 4M x 64	(1) 4M x 64
128MB	None	None	(1) 8M x 64	(1) 8M x 64
136MB	None	(2) 16M x 36	(1) 1M x 64	None
136MB	(2) 16M x 36	(2) 1M x 36	None	None
144MB	(2) 16M x 36	(2) 2M x 36	None	None
144MB	None	(2) 16M x 36	(1) 2M x 64	None
144MB	None	(2) 16M x 36	(1) 1M x 64	(1) 1M x 64
152MB	None	(2) 16M x 36	(1) 1M x 64	(1) 2M x 64
160MB	None	(2) 16M x 36	(1) 2M x 64	(1) 2M x 64
160MB	(2) 16M x 36	(2) 4M x 36	None	None
160MB	None	(2) 16M x 36	(1) 4M x 64	None
168MB	None	(2) 16M x 36	(1) 1M x 64	(1) 4M x 64
176MB	None	(2) 16M x 36	(1) 2M x 64	(1) 4M x 64
192MB	None	(2) 16M x 36	(1) 4M x 64	(1) 4M x 64
192MB	(2) 8M x 36	(2) 16M x 36	None	None
256MB	(2) 16M x 36	(2) 16M x 36	None	None

Note: Board accepts EDO & SDRAM memory.

CACHE CONFIGURATION	
Size	Bank 0
512KB	(1) 64K x 64

CPU SPEED SELECTION (CX 6X86)						
CPU speed	Clock speed	Multiplier	JP2	S1/1	S1/2	S1/3
150MHz	60MHz	2x	Open	On	On	Off
166MHz	66MHz	2x	Open	Off	On	Off
200MHz	75MHz	2x	Closed	Off	On	Off

Continued on next page. . .

GIGA-BYTE TECHNOLOGY CO., LTD.
GA - 586 T 2

... continued from previous page

CPU SPEED SELECTION (IBM 6X86)						
CPU speed	Clock speed	Multiplier	JP2	S1/1	S1/2	S1/3
150MHz	60MHz	2x	Open	On	On	Off
166MHz	66MHz	2x	Open	Off	On	Off
200MHz	75MHz	2x	Closed	Off	On	Off

CPU SPEED SELECTION (CX 6X86L)						
CPU speed	Clock speed	Multiplier	JP2	S1/1	S1/2	S1/3
150MHz	60MHz	2x	Open	On	On	Off
166MHz	66MHz	2x	Open	Off	On	Off
200MHz	75MHz	2x	Closed	Off	On	Off

CPU SPEED SELECTION (IBM 6X86L)						
CPU speed	Clock speed	Multiplier	JP2	S1/1	S1/2	S1/3
150MHz	60MHz	2x	Open	On	On	Off
166MHz	66MHz	2x	Open	Off	On	Off
200MHz	75MHz	2x	Closed	Off	On	Off

CPU SPEED SELECTION (CX 6X86MX)						
CPU speed	Clock speed	Multiplier	JP2	S1/1	S1/2	S1/3
166MHz	60MHz	2.5x	Open	On	On	On
200MHz	66MHz	2.5x	Open	Off	On	On
200MHz	75MHz	2x	Closed	Off	On	Off
233MHz	66MHz	3x	Open	Off	Off	On
233MHz	75MHz	2.5x	Closed	Off	On	On

CPU SPEED SELECTION (IBM 6X86MX)						
CPU speed	Clock speed	Multiplier	JP2	S1/1	S1/2	S1/3
166MHz	60MHz	2.5x	Open	On	On	On
200MHz	66MHz	2.5x	Open	Off	On	On
200MHz	75MHz	2x	Closed	Off	On	Off
233MHz	66MHz	3x	Open	Off	Off	On
233MHz	75MHz	2.5x	Closed	Off	On	On

Continued on next page...

GIGA-BYTE TECHNOLOGY CO., LTD.
GA - 5 8 6 T 2

... continued from previous page

CPU SPEED SELECTION (AM K5)						
CPU speed	Clock speed	Multiplier	JP2	S1/1	S1/2	S1/3
133MHz	66MHz	2x	Open	Off	On	Off
166MHz	66MHz	2.5x	Open	Off	On	On

CPU SPEED SELECTION (AM K6)						
CPU speed	Clock speed	Multiplier	JP2	S1/1	S1/2	S1/3
166MHz	66MHz	2.5x	Open	Off	On	On
180MHz	60MHz	3x	Open	On	Off	On
200MHz	66MHz	3x	Open	Off	Off	On
233MHz	66MHz	3.5x	Open	Off	Off	Off

CPU SPEED SELECTION (INTEL)						
CPU speed	Clock speed	Multiplier	JP2	S1/1	S1/2	S1/3
90MHz	60MHz	1.5x	Open	On	Off	Off
100MHz	66MHz	1.5x	Open	Off	Off	Off
120MHz	60MHz	2x	Open	On	On	Off
133MHz	66MHz	2x	Open	Off	On	Off
150MHz	60MHz	2.5x	Open	On	On	On
166MHz	66MHz	2.5x	Open	Off	On	On
180MHz	60MHz	3x	Open	On	Off	On
200MHz	66MHz	3x	Open	Off	Off	On

CPU SPEED SELECTION (INTEL MMX)						
CPU speed	Clock speed	Multiplier	JP2	S1/1	S1/2	S1/3
150MHz	60MHz	2.5x	Open	On	On	On
166MHz	66MHz	2.5x	Open	Off	On	On
200MHz	66MHz	3x	Open	Off	Off	On
233MHz	66MHz	3.5x	Open	Off	Off	Off

Continued on next page...

GIGA-BYTE TECHNOLOGY CO., LTD.
GA - 586T2

... continued from previous page

CPU VOLTAGE SELECTION				
Voltage	S1/4	S1/5	S1/6	S1/7
Auto	Off	Off	Off	On
2.0	Off	Off	Off	Off
2.1	Off	Off	On	Off
2.2	Off	On	Off	Off
2.3	Off	On	On	Off
2.4	On	Off	Off	Off
2.5	On	Off	On	Off
2.6	On	On	Off	Off
2.7	On	On	On	Off
2.8	Off	Off	Off	On
2.9	Off	Off	On	On
3.0	Off	On	Off	On
3.1	Off	On	On	On
3.2	On	Off	Off	On
3.3	On	Off	On	On
3.4	On	On	Off	On
3.5	On	On	On	On