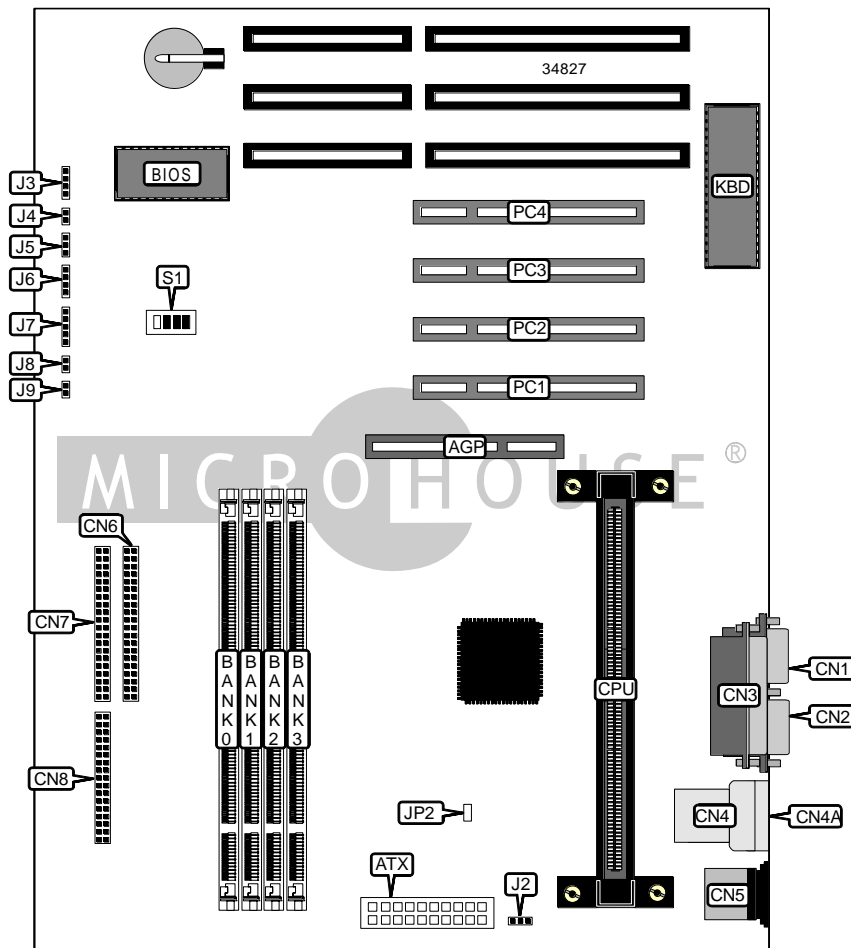


GIGA-BYTE TECHNOLOGY CO., LTD.

GA - 6 8 6 L X

Device Type	Mainboard
Processor	Pentium II
Processor Speed	200/233/266/300/333/366MHz
Chip Set	Intel
Video Chip Set	None
Maximum Onboard Memory	1GB (EDO & SDRAM supported)
Maximum Video Memory	None
Cache	256/512KB (located on Pentium II CPU)
BIOS	Award
Dimensions	305mm x 244mm
I/O Options	32-bit PCI slots (4), floppy drive interface, green PC connector, IDE interfaces (2), parallel port, PS/2 mouse port, serial ports (2), IR connector, USB connectors (2), ATX power connector, AGP slot
NPU Options	None



Continued on next page. . .

GIGA-BYTE TECHNOLOGY CO., LTD.
GA - 686 LX

... continued from previous page

CONNECTIONS			
Purpose	Location	Purpose	Location
AGP slot	AGP	CPU fan power	J2
ATX power connector	ATX	Speaker	J3
Serial port 1	CN1	Reset switch	J4
Serial port 2	CN2	Power LED	J5
Parallel port	CN3	IDE interface LED	J6
USB connector 1	CN4	IR connector	J7
USB connector 2	CN4A	Green PC connector	J8
PS/2 mouse port	CN5	Soft off power supply	J9
IDE interface 2	CN6	Green PC LED	J10
IDE interface 1	CN7	32-bit PCI slots	PC1 – PC4
Floppy drive interface	CN8		

Note: The location of J10 is unidentified.

USER CONFIGURABLE SETTINGS		
Function	Label	Position
í Factory configured - do not alter	JP2	Unidentified

DIMM CONFIGURATION 1GB				
Size	Bank 0	Bank 1	Bank 2	Bank 3
8MB	(1) 1M x 64	None	None	None
16MB	(1) 2M x 64	None	None	None
16MB	(1) 1M x 64	(1) 1M x 64	None	None
24MB	(1) 2M x 64	(1) 1M x 64	None	None
24MB	(1) 1M x 64	(1) 1M x 64	(1) 1M x 64	None
32MB	(1) 4M x 64	None	None	None
32MB	(1) 2M x 64	(1) 2M x 64	None	None
32MB	(1) 1M x 64	(1) 1M x 64	(1) 1M x 64	(1) 1M x 64
40MB	(1) 4M x 64	(1) 1M x 64	None	None
48MB	(1) 4M x 64	(1) 2M x 64	None	None
48MB	(1) 2M x 64	(1) 2M x 64	(1) 2M x 64	None
64MB	(1) 2M x 64	(1) 2M x 64	(1) 2M x 64	(1) 2M x 64
64MB	(1) 8M x 64	None	None	None
64MB	(1) 4M x 64	(1) 4M x 64	None	None
72MB	(1) 8M x 64	(1) 1M x 64	None	None
80MB	(1) 8M x 64	(1) 2M x 64	None	None
96MB	(1) 4M x 64	(1) 4M x 64	(1) 4M x 64	None

Continued on next page...

GIGA-BYTE TECHNOLOGY CO., LTD.
GA - 686 LX

... continued from previous page

DIMM CONFIGURATION (CON'T)				
Size	Bank 0	Bank 1	Bank 2	Bank 3
96MB	(1) 8M x 64	(1) 4M x 64	None	None
128MB	(1) 16M x 64	None	None	None
128MB	(1) 8M x 64	(1) 8M x 64	None	None
128MB	(1) 4M x 64	(1) 4M x 64	(1) 4M x 64	(1) 4M x 64
136MB	(1) 16M x 64	(1) 1M x 64	None	None
144MB	(1) 16M x 64	(1) 2M x 64	None	None
152MB	(1) 16M x 64	(1) 1M x 64	(1) 1M x 64	(1) 1M x 64
160MB	(1) 16M x 64	(1) 4M x 64	None	None
176MB	(1) 16M x 64	(1) 2M x 64	(1) 2M x 64	(1) 2M x 64
192MB	(1) 16M x 64	(1) 8M x 64	None	None
192MB	(1) 8M x 64	(1) 8M x 64	(1) 8M x 64	None
224MB	(1) 16M x 64	(1) 4M x 64	(1) 4M x 64	(1) 4M x 64
256MB	(1) 32M x 64	None	None	None
256MB	(1) 16M x 64	(1) 16M x 64	None	None
256MB	(1) 8M x 64	(1) 8M x 64	(1) 8M x 64	(1) 8M x 64
272MB	(1) 16M x 64	(1) 16M x 64	(1) 1M x 64	(1) 1M x 64
280MB	(1) 32M x 64	(1) 1M x 64	(1) 1M x 64	(1) 1M x 64
288MB	(1) 16M x 64	(1) 16M x 64	(1) 2M x 64	(1) 2M x 64
304MB	(1) 32M x 64	(1) 2M x 64	(1) 2M x 64	(1) 2M x 64
320MB	(1) 16M x 64	(1) 16M x 64	(1) 4M x 64	(1) 4M x 64
320MB	(1) 16M x 64	(1) 8M x 64	(1) 8M x 64	(1) 8M x 64
352MB	(1) 32M x 64	(1) 4M x 64	(1) 4M x 64	(1) 4M x 64
384MB	(1) 16M x 64	(1) 16M x 64	(1) 16M x 64	None
384MB	(1) 32M x 64	(1) 16M x 64	None	None
448MB	(1) 32M x 64	(1) 8M x 64	(1) 8M x 64	(1) 8M x 64
512MB	(1) 32M x 64	(1) 32M x 64	None	None
512MB	(1) 16M x 64	(1) 16M x 64	(1) 16M x 64	(1) 16M x 64
640MB	(1) 32M x 64	(1) 16M x 64	(1) 16M x 64	(1) 16M x 64
768MB	(1) 32M x 64	(1) 32M x 64	(1) 32M x 64	None
1024MB	(1) 32M x 64	(1) 32M x 64	(1) 32M x 64	(1) 32M x 64
Note: Maximum EDO memory is 1GB. Maximum SDRAM is 512MB.				

CACHE CONFIGURATION
Note: 256KB/512KB cache is located on the Pentium II CPU.

Continued on next page...

GIGA-BYTE TECHNOLOGY CO., LTD.
GA - 6 8 6 L X

... continued from previous page

CPU SPEED SELECTION						
CPU speed	Clock speed	Multiplier	S1/1	S1/2	S1/3	S1/4
200MHz	66MHz	3x	Off	On	Off	Off
233MHz	66MHz	3.5x	On	On	Off	Off
266MHz	66MHz	4x	Off	Off	On	Off
300MHz	66MHz	4.5x	On	Off	On	Off
333MHz	66MHz	5x	Off	On	On	Off
366MHz	66MHz	5.5x	On	On	On	Off