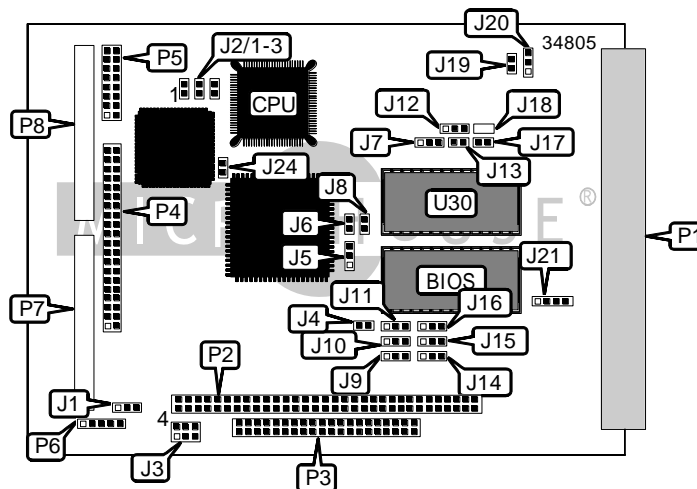


GESPAC

GESSBS-38A, 46A

Device Type	Mainboard
Processor	80386SX/CX486SLC-2
Processor Speed	25/50MHz
Chip Set	VLSI
Video Chip Set	Unidentified
Maximum Onboard Memory	None
Maximum Video Memory	Unidentified
Cache	None
BIOS	Unidentified
Dimensions	Unidentified
I/O Options	Floppy drive interface, IDE interface, parallel port, serial ports (2), PC/104 connectors (2), flat panel connector, G-96 bus interface
NPU Options	None



CONNECTIONS			
Purpose	Location	Purpose	Location
G-96 bus interface	P1	VGA interface	P5
PC/104 connector (8-bit)	P2	Reset switch	P6
PC/104 connector (16-bit)	P3	IDE/floppy drive interface	P7
Flat panel connector	P4	Keyboard, speaker, COM1, COM2, LPT	P8

Continued on next page. . .

GES PAC

GE S S B S - 3 8 A , 4 6 A

... continued from previous page

USER CONFIGURABLE SETTINGS		
Function	Label	Position
IRQ11 from IRQ3 (G-96 bus)	J5	Pins 1 & 2 closed
IRQ11 from PC/104	J5	Pins 2 & 3 closed
Pipeline address enabled	J6	Closed
Pipeline address disabled	J6	Open
IRQ14 from IDE	J7	Pins 1 & 2 closed
IRQ14 from PC/104	J7	Pins 2 & 3 closed
GESMFI-3 access on G-96 enabled	J8	Closed
GESMFI-3 access on G-96 disabled	J8	Open
IRQ10 from IRQ2 (G-96 bus)	J10	Pins 1 & 2 closed
IRQ10 from PC/104	J10	Pins 2 & 3 closed
IRQ5 from J16	J11	Pins 1 & 2 closed
IRQ5 from PC/104	J11	Pins 2 & 3 closed
BIOS type select flash BIOS	J12	Pins 1 & 2 closed
BIOS type select EPROM	J12	Pins 2 & 3 closed
IRQ12 from IRQ4 (G-96 bus)	J14	Pins 1 & 2 closed
IRQ12 from PC/104	J14	Pins 2 & 3 closed
IRQ15 from IRQ5 (G-96 bus)	J15	Pins 1 & 2 closed
IRQ15 from PC/104	J15	Pins 2 & 3 closed
G-96 NMI or PWF to IRQ5	J16	Pins 1 & 2 closed
G-96 NMI or PWF to MPU NMI	J16	Pins 2 & 3 closed
í Factory configured - do not alter	J18	Unidentified
G-96 bus normal operation	J19	Closed
G-96 bus disabled	J19	Open
Boot on SSD enabled	J20	Pins 2 & 3 closed
Boot on SSD disabled	J20	Open
í Factory configured –do not alter (flash programming enabled)	J21	Pins 1 – 4 closed

VIDEO SELECTION			
Setting	J2/1	J2/2	J2/3
C8SS-16:STN passive matrix 16-bit, 8-colors, single panel/scan	Closed	Closed	Closed
M2DD8 4MHz pixel clock for monochrome panel	Open	Closed	Closed
TFT active matrix color	Open	Open	Closed
Monochrome	Open	Closed	Open
640 x 480 color	Closed	Open	Open
1024 x 768 color	Closed	Open	Closed
None installed	Open	Open	Open

Continued on next page. . .

GES PAC

GE S S B S - 3 8 A , 4 6 A

... continued from previous page

BATTERY SELECTION		
Setting	Power	J1
Reset RTC battery backed RAM	Off	Pins 1 & 2 closed
Battery connected	On	Pins 2 & 3 closed
Battery activated	Off	Pins 2 & 3 closed
Battery disconnected	On	Open

MEMORY MAP SELECTION		
Setting	J4	J17
D0000 – D7FFF on VMA G-96 bus	N/A	Open
D0000 – DFFFF on PC-104 bus	Open	Closed
D0000 – D7FFF on PC-104 bus	Closed	Closed

WATCHDOG TIMER SELECTION		
Setting	J9	J24
Watchdog output directed to Maskable NMI	Pins 1 & 2 closed	N/A
Watchdog NMI disabled	Open	N/A
Watchdog output directed to reset	N/A	Closed
Watchdog reset generation disabled	N/A	Open

SSD SELECTION		
Memory map	SSD selection	J13
C8000 – CBFFF on G-96 bus	External SSD	Closed
C8000 – CBFFF for PC/104 or internal SSD	Internal SSD in U30	Open

IRQ/NMI SELECTION	
Setting	J3
G-96 IRQ1 to internal IRQ9	Pins 2 & 5 closed
PC/104 IRQ1 to internal IRQ9	Pins 3 & 4 closed