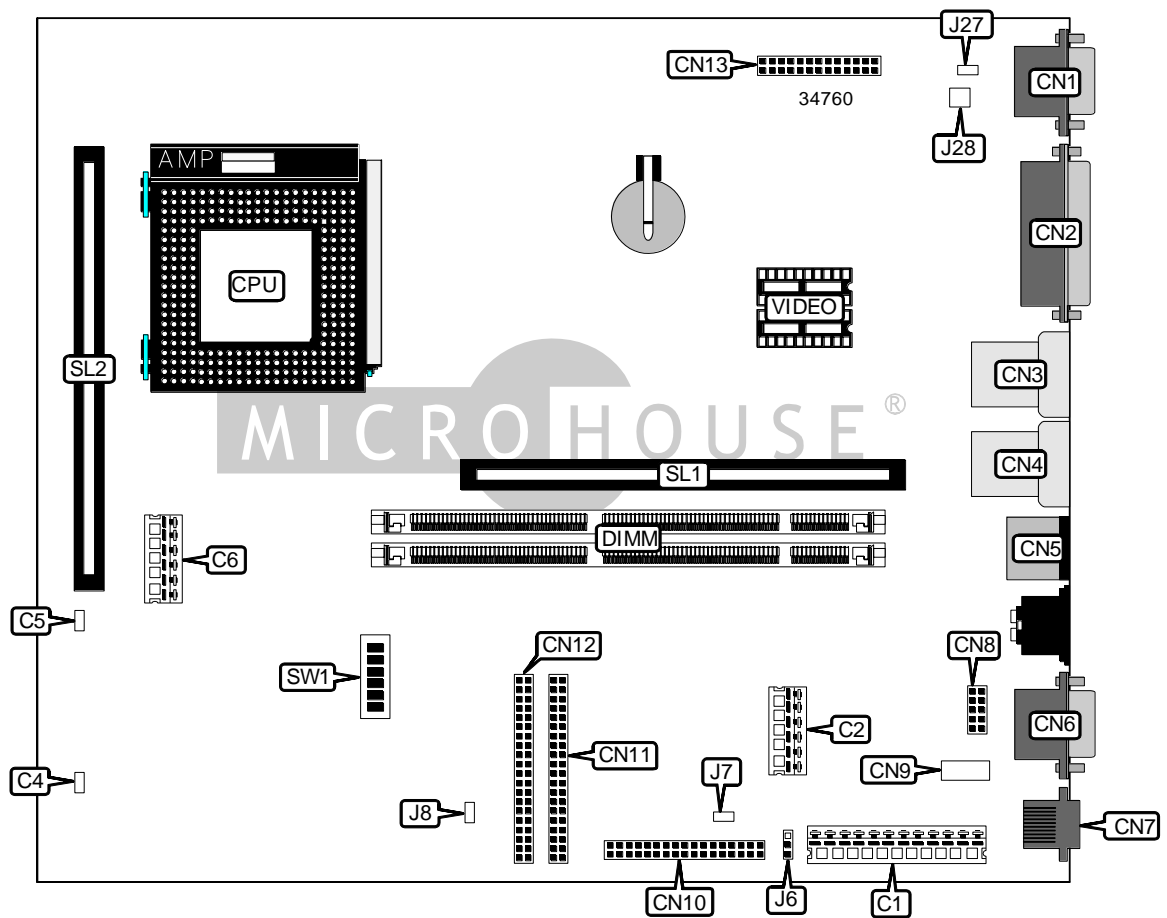


IBM CORPORATION PC300 (TYPE 6272, 6282)

Device Type	Mainboard
Processor	Pentium
Processor Speed	75/90/100/120/133/150/166/200/233MHz
Chip Set	Unidentified
Video Chip Set	Unidentified
Maximum Onboard Memory	128MB (EDO & SDRAM supported)
Maximum Video Memory	Unidentified
Cache	256/512KB
BIOS	Unidentified
Dimensions	330mm x 218mm
I/O Options	Ethernet 10BaseT connector, AUI connector, floppy drive interface, IDE interfaces (2), parallel port, PS/2 mouse port, serial ports (2), VGA feature connector, VGA port, riser slot, cache slot, USB connectors (2)
NPU Options	None



Continued on next page . . .

IBM CORPORATION
PC300 (TYPE 6272, 6282)

... continued from previous page

CONNECTIONS			
Purpose	Location	Purpose	Location
5v power	C1	Serial port 2	CN8
5v auxiliary power	C2	AUI connector	CN9
LAN LED	C4	Floppy drive interface	CN10
Chassis fan power	C5	IDE interface 1	CN11
3.3v power	C6	IDE interface 2	CN12
VGA port	CN1	VGA feature connector	CN13
Parallel port	CN2	Power switch connector	J7
USB connector 2	CN3	Power LED/IDE interface LED	J8
USB connector 1	CN4	Wake on modem connector	J27
PS/2 mouse port	CN5	Wake on LAN connector	J28
Serial port 1	CN6	Riser slot	SL1
Ethernet 10BaseT connector	CN7	Cache slot	SL2

USER CONFIGURABLE SETTINGS		
Function	Label	Position
í CMOS memory normal operation	J6	Pins 1 & 2 closed
CMOS memory clear	J6	Pins 2 & 3 closed
í Factory configured - do not alter	SW1/5	Off
í Floppy drive normal operation	SW1/6	Off
Floppy drive read only	SW1/6	On

DIMM CONFIGURATION		
Size	Bank 0	Bank 1
8MB	(1) 1M x 64	None
16MB	(1) 2M x 64	None
16MB	(1) 1M x 64	(1) 1M x 64
24MB	(1) 2M x 64	(1) 1M x 64
32MB	(1) 4M x 64	None
32MB	(1) 2M x 64	(1) 2M x 64
40MB	(1) 4M x 64	(1) 1M x 64
48MB	(1) 4M x 64	(1) 2M x 64
64MB	(1) 8M x 64	None
64MB	(1) 4M x 64	(1) 4M x 64
72MB	(1) 8M x 64	(1) 1M x 64
80MB	(1) 8M x 64	(1) 2M x 64
96MB	(1) 8M x 64	(1) 4M x 64
128MB	(1) 8M x 64	(1) 8M x 64

Note: Board accepts EDO & SDRAM memory.

Continued on next page...

IBM CORPORATION
PC300 (TYPE 6272, 6282)

... continued from previous page

CACHE CONFIGURATION	
Size	SL2
256KB	256KB module installed
512KB	512KB module installed

VIDEO MEMORY CONFIGURATION
Note: The size location of the video memory is unidentified.

CPU SPEED SELECTION						
CPU speed	Clock speed	Multiplier	SW1/1	SW1/2	SW1/3	SW1/4
75MHz	50MHz	1.5x	Off	Off	On	On
90MHz	60MHz	1.5x	Off	Off	On	Off
100MHz	66MHz	1.5x	Off	Off	Off	On
120MHz	60MHz	2x	On	Off	On	Off
133MHz	66MHz	2x	On	Off	Off	On
150MHz	60MHz	2.5x	On	On	On	Off
166MHz	66MHz	2.5x	On	On	Off	On
200MHz	66MHz	3x	Off	On	Off	On
233MHz	66MHz	3.5x	Off	Off	Off	On