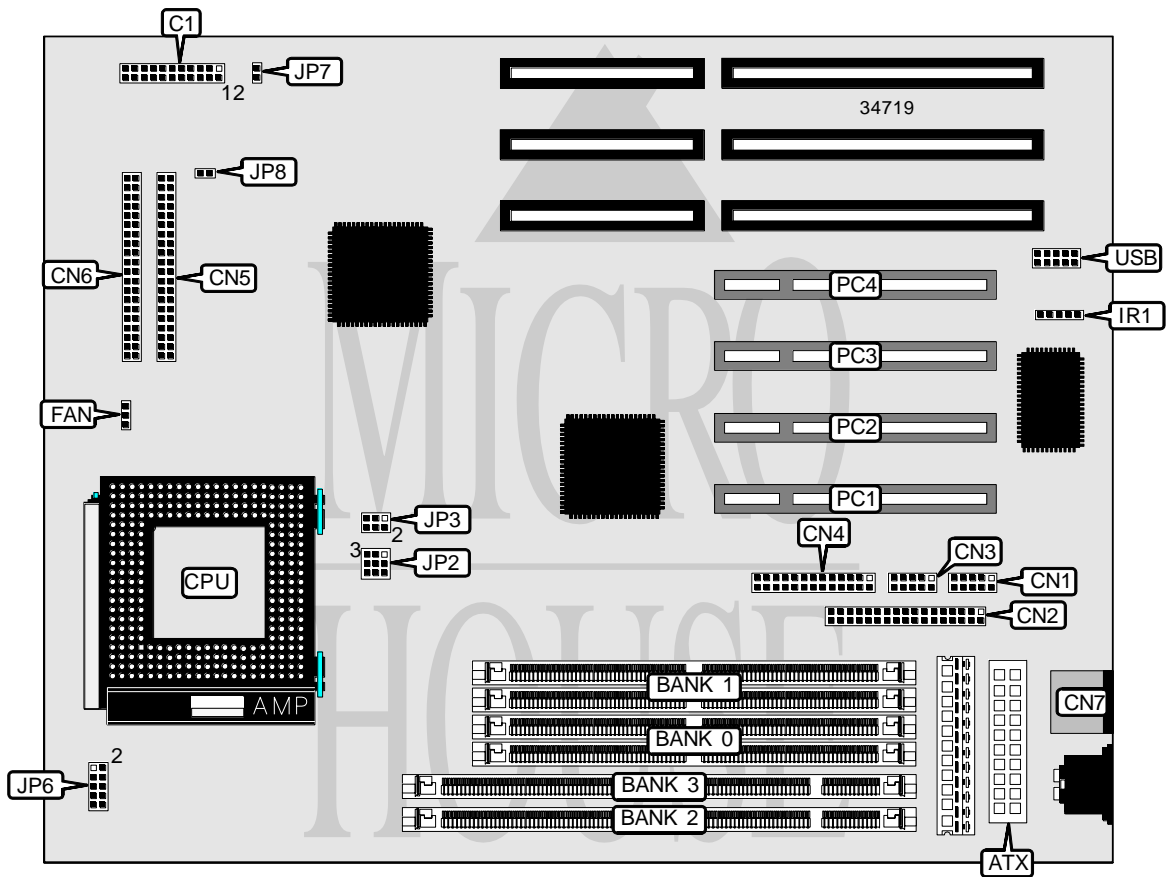


A-TREND TECHNOLOGY CORPORATION

ATC-5000 (VER. 2)

Processor	CX 6X86/CX 6X86L/AM K5/AM K6/Pentium
Processor Speed	90/100/120/133/150/166/180/200/233MHz
Chip Set	Intel
Video Chip Set	None
Maximum Onboard Memory	256MB (EDO supported)
Maximum Video Memory	None
Cache	256/512KB
BIOS	Award
Dimensions	260mm x 220mm
I/O Options	32-bit PCI slots (4), floppy drive interface, green PC connector, IDE interfaces (2), parallel port, PS/2 mouse port, serial ports (2), IR connector, USB connector, ATX power connector
NPU Options	None



Continued on next page. . .

A-TREND TECHNOLOGY CORPORATION
 ATC-5000 (VER. 2)

... continued from previous page

CONNECTIONS			
Purpose	Location	Purpose	Location
ATX power connector	ATX	Parallel port	CN4
Reset switch	C1/pins 1 & 2	IDE interface 1	CN5
Green PC connector	C1/pins 4 & 5	IDE interface 2	CN6
Turbo LED	C1/pins 7 & 8	PS/2 mouse port	CN7
IDE interface LED	C1/pins 10 & 11	CPU fan power	FAN
Speaker	C1/pins 12 – 15	IR connector	IR1
Power LED & keylock	C1/pins 17 - 19	Soft off power supply	JP7
Serial port 1	CN1	32-bit PCI slots	PC1 – PC4
Floppy drive interface	CN2	USB connector	USB
Serial port 2	CN3		

USER CONFIGURABLE SETTINGS		
Function	Label	Position
CMOS memory normal operation	JP8	Closed
CMOS memory clear	JP8	Open

DIMM CONFIGURATION		
Size	Bank 0	Bank 1
8MB	(1) 1M x 64	None
16MB	(1) 2M x 64	None
16MB	(1) 1M x 64	(1) 1M x 64
24MB	(1) 2M x 64	(1) 1M x 64
32MB	(1) 4M x 64	None
32MB	(1) 2M x 64	(1) 2M x 64
40MB	(1) 4M x 64	(1) 1M x 64
48MB	(1) 4M x 64	(1) 2M x 64
64MB	(1) 8M x 64	None
64MB	(1) 4M x 64	(1) 4M x 64
72MB	(1) 8M x 64	(1) 1M x 64
80MB	(1) 8M x 64	(1) 2M x 64
96MB	(1) 8M x 64	(1) 4M x 64
128MB	(1) 16M x 64	None
128MB	(1) 8M x 64	(1) 8M x 64
136MB	(1) 16M x 64	(1) 1M x 64
144MB	(1) 16M x 64	(1) 2M x 64
160MB	(1) 16M x 64	(1) 4M x 64
192MB	(1) 16M x 64	(1) 8M x 64
256MB	(1) 16M x 64	(1) 16M x 64

Continued on next page...

A-TREND TECHNOLOGY CORPORATION
 ATC-5000 (VER. 2)

... continued from previous page

SIMM CONFIGURATION		
Size	Bank 0	Bank 1
8MB	(2) 1M x 36	None
16MB	(2) 2M x 36	None
16MB	(2) 1M x 36	(2) 1M x 36
24MB	(2) 2M x 36	(2) 1M x 36
32MB	(2) 4M x 36	None
32MB	(2) 2M x 36	(2) 2M x 36
40MB	(2) 4M x 36	(2) 1M x 36
48MB	(2) 4M x 36	(2) 2M x 36
64MB	(2) 8M x 36	None
64MB	(2) 4M x 36	(2) 4M x 36
72MB	(2) 8M x 36	(2) 1M x 36
80MB	(2) 8M x 36	(2) 2M x 36
96MB	(2) 8M x 36	(2) 4M x 36
128MB	(2) 8M x 36	(2) 8M x 36
128MB	(2) 16M x 36	None
136MB	(2) 16M x 36	(2) 1M x 36
144MB	(2) 16M x 36	(2) 2M x 36
160MB	(2) 16M x 36	(2) 4M x 36
192MB	(2) 16M x 36	(2) 8M x 36
256MB	(2) 16M x 36	(2) 16M x 36

Note: Board accepts EDO memory.

CACHE CONFIGURATION	
Size	Bank 0
256KB	(2) 32K x 32
512KB	(2) 64K x 32

Note: The location of bank 0 is unidentified.

CPU SPEED SELECTION (CX 6X86)				
CPU speed	Clock speed	Multiplier	JP2	JP3
150MHz	60MHz	2x	2 & 3, 4 & 5	1 & 2, 5 & 6
166MHz	66MHz	2x	2 & 3, 4 & 5	1 & 2, 4 & 5

Note: Pins designated should be in the closed position.

CPU SPEED SELECTION (CX 6X86L)				
CPU speed	Clock speed	Multiplier	JP2	JP3
150MHz	60MHz	2x	2 & 3, 4 & 5	1 & 2, 5 & 6
166MHz	66MHz	2x	2 & 3, 4 & 5	1 & 2, 4 & 5
200MHz	75MHz	3x	2 & 3, 4 & 5	2 & 3, 4 & 5

Note: Pins designated should be in the closed position.

Continued on next page. . .

A-TREND TECHNOLOGY CORPORATION
 ATC-5000 (VER. 2)

... continued from previous page

CPU SPEED SELECTION (AM K5)				
CPU speed	Clock speed	Multiplier	JP2	JP3
90MHz	60MHz	1.5x	1 & 2, 4 & 5	1 & 2, 5 & 6
100MHz	66MHz	1.5x	1 & 2, 4 & 5	1 & 2, 4 & 5
120MHz	60MHz	1.5x	1 & 2, 4 & 5	1 & 2, 5 & 6
133MHz	66MHz	1.5x	1 & 2, 4 & 5	1 & 2, 4 & 5
166MHz	66MHz	2.5x	2 & 3, 5 & 6	1 & 2, 4 & 5

Note: Pins designated should be in the closed position.

CPU SPEED SELECTION (AK K6)				
CPU speed	Clock speed	Multiplier	JP2	JP3
166MHz	66MHz	2.5x	2 & 3, 5 & 6	1 & 2, 4 & 5
200MHz	66MHz	3x	1 & 2, 5 & 6	1 & 2, 4 & 5
233MHz	66MHz	3.5x	1 & 2, 4 & 5	1 & 2, 4 & 5

Note: Pins designated should be in the closed position.

CPU SPEED SELECTION (INTEL P54C STD)				
CPU speed	Clock speed	Multiplier	JP2	JP3
120MHz	60MHz	2x	2 & 3, 4 & 5	1 & 2, 5 & 6
133MHz	66MHz	2x	2 & 3, 4 & 5	1 & 2, 4 & 5
150MHz	60MHz	2.5x	2 & 3, 5 & 6	1 & 2, 5 & 6
166MHz	66MHz	2.5x	2 & 3, 5 & 6	1 & 2, 4 & 5
180MHz	60MHz	3x	1 & 2, 5 & 6	1 & 2, 5 & 6
200MHz	66MHz	3x	1 & 2, 5 & 6	1 & 2, 4 & 5

Note: Pins designated should be in the closed position.

CPU SPEED SELECTION (INTEL P54C VRE)				
CPU speed	Clock speed	Multiplier	JP2	JP3
120MHz	60MHz	2x	2 & 3, 4 & 5	1 & 2, 5 & 6
133MHz	66MHz	2x	2 & 3, 4 & 5	1 & 2, 4 & 5
150MHz	60MHz	2.5x	2 & 3, 5 & 6	1 & 2, 5 & 6
166MHz	66MHz	2.5x	2 & 3, 5 & 6	1 & 2, 4 & 5
180MHz	60MHz	3x	1 & 2, 5 & 6	1 & 2, 5 & 6
200MHz	66MHz	3x	1 & 2, 5 & 6	1 & 2, 4 & 5

Note: Pins designated should be in the closed position.

Continued on next page...

A-TREND TECHNOLOGY CORPORATION
 ATC-5000 (VER. 2)

... continued from previous page

CPU SPEED SELECTION (INTEL MMX)				
CPU speed	Clock speed	Multiplier	JP2	JP3
166MHz	66MHz	2.5x	2 & 3, 5 & 6	1 & 2, 4 & 5
200MHz	66MHz	3x	1 & 2, 5 & 6	1 & 2, 4 & 5
233MHz	66MHz	3.5x	1 & 2, 4 & 5	1 & 2, 4 & 5

Note: Pins designated should be in the closed position.

CPU TYPE SELECTION	
Type	JP6
CX 6X86	Pins 1 & 2 closed
CX 6X86L	Pins 9 & 10 closed
AM K5	Pins 1 & 2 closed
AM K6-166/200	Pins 7 & 8 closed
AM K6-233	Pins 5 & 6 closed
P54C (VRE)	Pins 1 & 2 closed
P54C (STD)	Pins 3 & 4 closed
P55C	Pins 9 & 10 closed