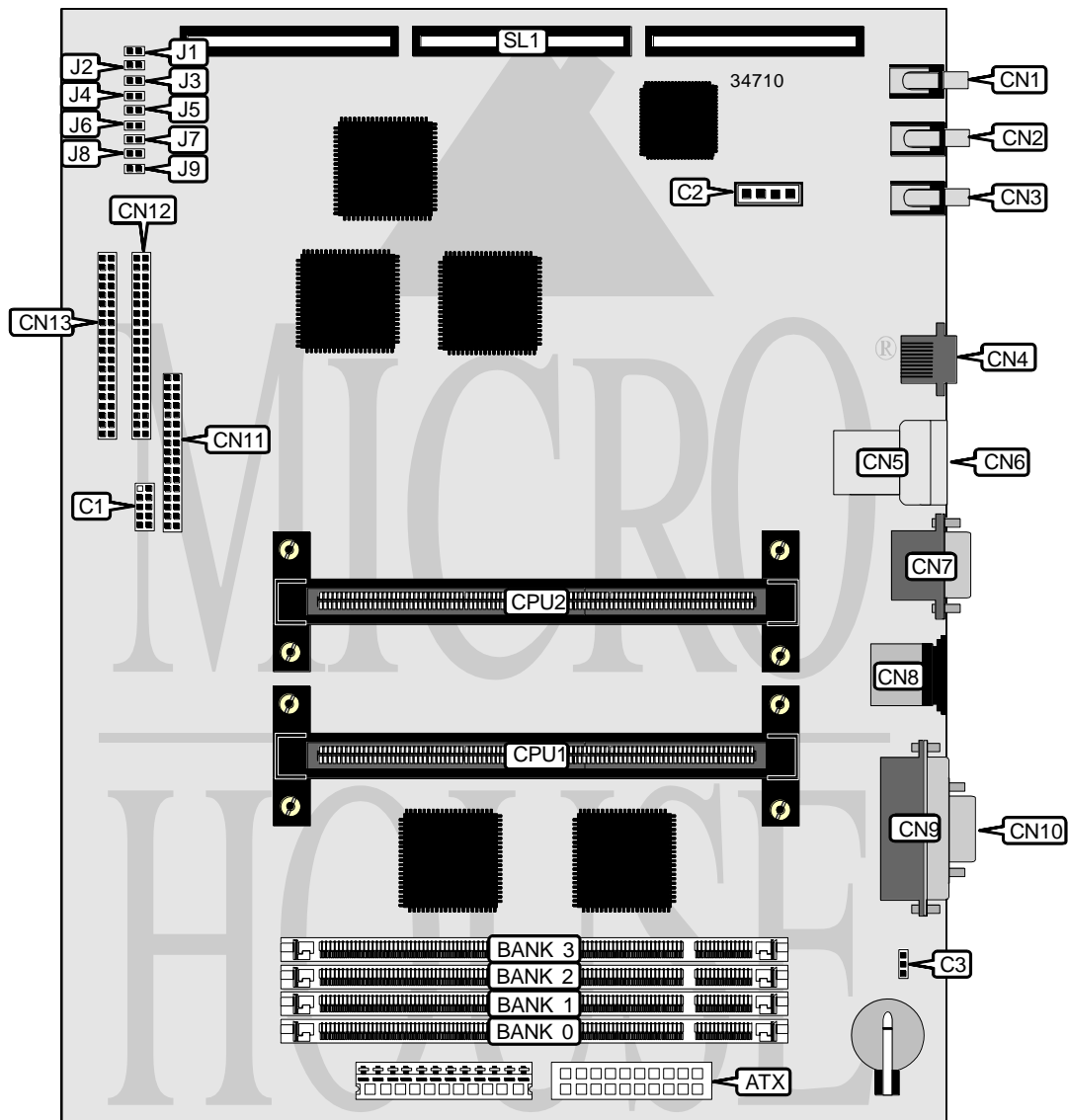


DELL COMPUTER CORPORATION WORKSTATION 400

Processor	Pentium II
Processor Speed	266/300MHz
Chip Set	Intel
Video Chip Set	None
Maximum Onboard Memory	512MB (EDO supported)
Maximum Video Memory	None
Cache	512KB (located on Pentium II CPU)
BIOS	Unidentified
Dimensions	305mm x 244mm
I/O Options	Ethernet connector, floppy drive interface, IDE interfaces (2), parallel port, PS/2 mouse port, serial ports (2), riser slot, USB connectors (2), line in, line out, microphone in, ATX power connector, audio in – CD-ROM
NPU Options	None



Continued on next page. . .

DELL COMPUTER CORPORATION WORKSTATION 400

... continued from previous page

CONNECTIONS			
Purpose	Location	Purpose	Location
ATX power connector	ATX	USB connector 2	CN6
Front panel connector	C1	Serial port 2	CN7
Audio in – CD-ROM	C2	PS/2 mouse port	CN8
Chassis fan power	C3	Parallel port	CN9
Line in	CN1	Serial port 1	CN10
Line out	CN2	Floppy drive interface	CN11
Microphone in	CN3	IDE interface 2	CN12
Ethernet connector	CN4	IDE interface 1	CN13
USB connector 1	CN5	Riser slot	SL1

USER CONFIGURABLE SETTINGS		
Function	Label	Position
Case type select mini tower	J1	Closed
Case type select midsize	J1	Open
í Factory configured - do not alter	J2	Open
í Factory configured - do not alter	J3	Open
í Factory configured - do not alter	J4	Open
í Factory configured - do not alter	J7	Open
í Factory configured - do not alter	J8	Open
í Password enabled	J9	Closed
Password disabled	J9	Open

DIMM CONFIGURATION				
Size	Bank 0	Bank 1	Bank 2	Bank 3
8MB	(1) 1M x 64	None	None	None
16MB	(1) 2M x 64	None	None	None
16MB	(1) 1M x 64	(1) 1M x 64	None	None
24MB	(1) 2M x 64	(1) 1M x 64	None	None
24MB	(1) 1M x 64	(1) 1M x 64	(1) 1M x 64	None
32MB	(1) 4M x 64	None	None	None
32MB	(1) 2M x 64	(1) 2M x 64	None	None
32MB	(1) 1M x 64	(1) 1M x 64	(1) 1M x 64	(1) 1M x 64
40MB	(1) 4M x 64	(1) 1M x 64	None	None
48MB	(1) 4M x 64	(1) 2M x 64	None	None
48MB	(1) 2M x 64	(1) 2M x 64	(1) 2M x 64	None
64MB	(1) 8M x 64	None	None	None
64MB	(1) 4M x 64	(1) 4M x 64	None	None
64MB	(1) 2M x 64	(1) 2M x 64	(1) 2M x 64	(1) 2M x 64
72MB	(1) 8M x 64	(1) 1M x 64	None	None
80MB	(1) 8M x 64	(1) 2M x 64	None	None
96MB	(1) 8M x 64	(1) 4M x 64	None	None
96MB	(1) 4M x 64	(1) 4M x 64	(1) 4M x 64	None

Continued on next page...

DELL COMPUTER CORPORATION
 WORKSTATION 400

... continued from previous page

DIMM CONFIGURATION (CON'T)				
Size	Bank 0	Bank 1	Bank 2	Bank 3
128MB	(1) 16M x 64	None	None	None
128MB	(1) 8M x 64	(1) 8M x 64	None	None
128MB	(1) 4M x 64	(1) 4M x 64	(1) 4M x 64	(1) 4M x 64
136MB	(1) 16M x 64	(1) 1M x 64	None	None
144MB	(1) 16M x 64	(1) 2M x 64	None	None
160MB	(1) 16M x 64	(1) 4M x 64	None	None
192MB	(1) 16M x 64	(1) 8M x 64	None	None
192MB	(1) 8M x 64	(1) 8M x 64	(1) 8M x 64	None
256MB	(1) 8M x 64	(1) 8M x 64	(1) 8M x 64	(1) 8M x 64
256MB	(1) 16M x 64	(1) 16M x 64	None	None
384MB	(1) 16M x 64	(1) 16M x 64	(1) 16M x 64	None
512MB	(1) 16M x 64	(1) 16M x 64	(1) 16M x 64	(1) 16M x 64

Note: Board accepts EDO memory.

CACHE CONFIGURATION
Note: 256KB/512KB cache is located on the Pentium II CPU.

CPU SPEED SELECTION				
CPU speed	Clock speed	Multiplier	J5	J6
266MHz	66MHz	4x	Open	Closed
300MHz	66MHz	4.5x	Closed	Open