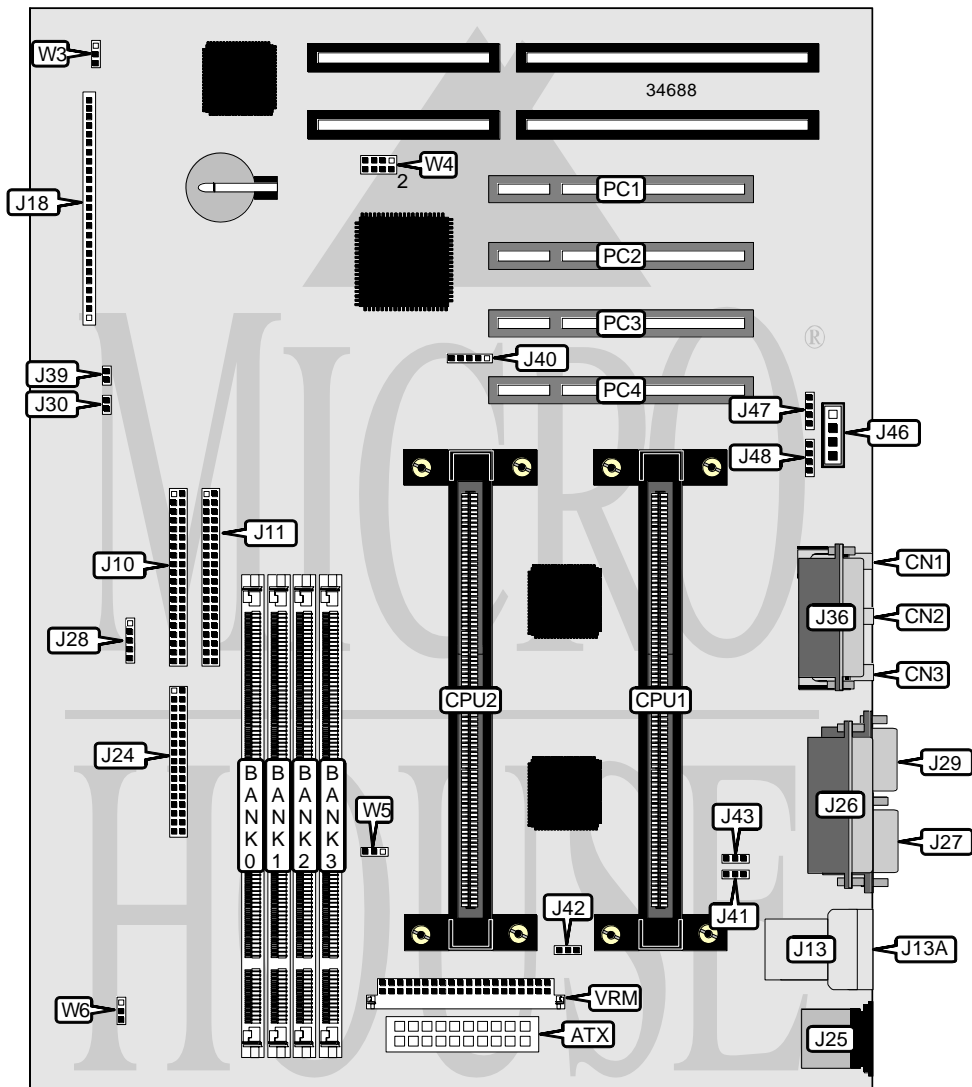


MICRONICS COMPUTERS, INC.

DUAL FORTRESS

Processor	Pentium II
Processor Speed	233/266/300/333MHz
Chip Set	Intel
Video Chip Set	None
Maximum Onboard Memory	1GB (EDO supported)
Maximum Video Memory	None
Cache	256/512KB (located on Pentium II CPU)
BIOS	Phoenix
Dimensions	305mm x 244mm
I/O Options	32-bit PCI slots (4), floppy drive interface, game/MIDI port, IDE interfaces (2), parallel port, PS/2 mouse port, serial ports (2), IR connector, VRM connector, USB connectors (2), ATX power connector, line in (2), line out (2), microphone in, audio in – CD-ROM
NPU Options	None



Continued on next page. . .

MICRONICS COMPUTERS, INC.
DUAL FORTRESS

... continued from previous page

CONNECTIONS			
Purpose	Location	Purpose	Location
ATX power connector	ATX		
Microphone in	CN1	PS/2 mouse port	J25
Line out - external	CN2	Parallel port	J26
Line in - external	CN3	Serial port 1	J27
IDE interface 1	J10	Power LED & keylock	J28
IDE interface 2	J11	Serial port 2	J29
USB connector 1	J13	Turbo LED	J30
USB connector 2	J13A	Game/MIDI port	J36
Soft off power supply	J18/pins 1 & 2	Chassis intrusion connector	J39
Green PC connector	J18/pins 3 & 4	External temperature sensor	J40
IR connector	J18/pins 6 - 10	Chassis fan power	J42
IDE interface LED	J18/pins 13 - 16	Audio in – CD-ROM	J46
Power LED	J18/pins 18 - 20	Line in - internal	J47
Reset switch	J18/pins 22 & 23	Line out - internal	J48
Speaker	J18/pins 24 - 27	32-bit PCI slots	PC1 – PC4
Floppy drive interface	J24	VRM connector	VRM

USER CONFIGURABLE SETTINGS		
Function	Label	Position
í Factory configured - do not alter	J41	Unidentified
í Factory configured - do not alter	J42	Unidentified
í CMOS memory normal operation	W3	Pins 1 & 2 closed
CMOS memory clear	W3	Pins 2 & 3 closed
í Factory configured - do not alter	W6	Unidentified

DIMM CONFIGURATION				
Size	Bank 0	Bank 1	Bank 2	Bank 3
8MB	(1) 1M x 64	None	None	None
16MB	(1) 2M x 64	None	None	None
16MB	(1) 1M x 64	(1) 1M x 64	None	None
24MB	(1) 2M x 64	(1) 1M x 64	None	None
24MB	(1) 1M x 64	(1) 1M x 64	(1) 1M x 64	None
32MB	(1) 2M x 64	(1) 2M x 64	None	None
32MB	(1) 4M x 64	None	None	None
32MB	(1) 1M x 64	(1) 1M x 64	(1) 1M x 64	(1) 1M x 64
40MB	(1) 2M x 64	(1) 2M x 64	(1) 1M x 64	None
40MB	(1) 2M x 64	(1) 1M x 64	(1) 1M x 64	(1) 1M x 64
40MB	(1) 4M x 64	(1) 1M x 64	None	None
48MB	(1) 2M x 64	(1) 2M x 64	(1) 2M x 64	None
48MB	(1) 2M x 64	(1) 2M x 64	(1) 1M x 64	(1) 1M x 64
48MB	(1) 4M x 64	(1) 1M x 64	(1) 1M x 64	None
56MB	(1) 4M x 64	(1) 2M x 64	(1) 1M x 64	None

Continued on next page...

MICRONICS COMPUTERS, INC.
 DUAL FORTRESS

... continued from previous page

DIMM CONFIGURATION (CON'T)				
Size	Bank 0	Bank 1	Bank 2	Bank 3
56MB	(1) 4M x 64	(1) 1M x 64	(1) 1M x 64	(1) 1M x 64
64MB	(1) 2M x 64	(1) 2M x 64	(1) 2M x 64	(1) 2M x 64
64MB	(1) 4M x 64	(1) 4M x 64	None	None
64MB	(1) 8M x 64	None	None	None
80MB	(1) 4M x 64	(1) 2M x 64	(1) 2M x 64	(1) 2M x 64
80MB	(1) 4M x 64	(1) 4M x 64	(1) 1M x 64	(1) 1M x 64
80MB	(1) 8M x 64	(1) 2M x 64	None	None
80MB	(1) 8M x 64	(1) 1M x 64	(1) 1M x 64	None
96MB	(1) 4M x 64	(1) 4M x 64	(1) 2M x 64	(1) 2M x 64
96MB	(1) 4M x 64	(1) 4M x 64	(1) 4M x 64	None
96MB	(1) 8M x 64	(1) 2M x 64	(1) 1M x 64	(1) 1M x 64
112MB	(1) 4M x 64	(1) 4M x 64	(1) 4M x 64	(1) 2M x 64
112MB	(1) 8M x 64	(1) 4M x 64	(1) 2M x 64	None
112MB	(1) 8M x 64	(1) 4M x 64	(1) 1M x 64	(1) 1M x 64
128MB	(1) 16M x 64	None	None	None
128MB	(1) 4M x 64	(1) 4M x 64	(1) 4M x 64	(1) 4M x 64
128MB	(1) 8M x 64	(1) 4M x 64	(1) 4M x 64	None
128MB	(1) 8M x 64	(1) 8M x 64	None	None
160MB	(1) 16M x 64	(1) 2M x 64	(1) 1M x 64	(1) 1M x 64
192MB	(1) 16M x 64	(1) 4M x 64	(1) 4M x 64	None
192MB	(1) 8M x 64	(1) 8M x 64	(1) 4M x 64	(1) 4M x 64
192MB	(1) 8M x 64	(1) 8M x 64	(1) 8M x 64	None
224MB	(1) 16M x 64	(1) 8M x 64	(1) 2M x 64	(1) 2M x 64
224MB	(1) 16M x 64	(1) 8M x 64	(1) 4M x 64	None
256MB	(1) 16M x 64	(1) 16M x 64	None	None
256MB	(1) 16M x 64	(1) 8M x 64	(1) 4M x 64	(1) 4M x 64
256MB	(1) 16M x 64	(1) 8M x 64	(1) 8M x 64	None
256MB	(1) 8M x 64	(1) 8M x 64	(1) 8M x 64	(1) 8M x 64
288MB	(1) 16M x 64	(1) 16M x 64	(1) 4M x 64	None
320MB	(1) 16M x 64	(1) 8M x 64	(1) 8M x 64	(1) 8M x 64
384MB	(1) 16M x 64	(1) 16M x 64	(1) 16M x 64	None
384MB	(1) 16M x 64	(1) 16M x 64	(1) 8M x 64	(1) 8M x 64
448MB	(1) 16M x 64	(1) 16M x 64	(1) 16M x 64	(1) 8M x 64
512MB	(1) 16M x 64	(1) 16M x 64	(1) 16M x 64	(1) 16M x 64
1024MB	(1) 32M x 64	(1) 32M x 64	(1) 32M x 64	(1) 32M x 64

Note: Board accepts EDO memory.

CACHE CONFIGURATION
Note: 256KB/512KB cache is located on the Pentium II CPU.

Continued on next page. . .

MICRONICS COMPUTERS, INC.
DUAL FORTRESS

... continued from previous page

CPU SPEED SELECTION				
CPU speed	Clock speed	Multiplier	W4	W5
233MHz	66MHz	3.5x	1 & 2, 3 & 4	1 & 2
266MHz	66MHz	4x	1 & 2, 5 & 6	1 & 2
300MHz	66MHz	4.5x	1 & 2, 5 & 6	1 & 2
333MHz	66MHz	5x	1 & 2, 7 & 8	1 & 2

Note: Pins designated should be in the closed position.