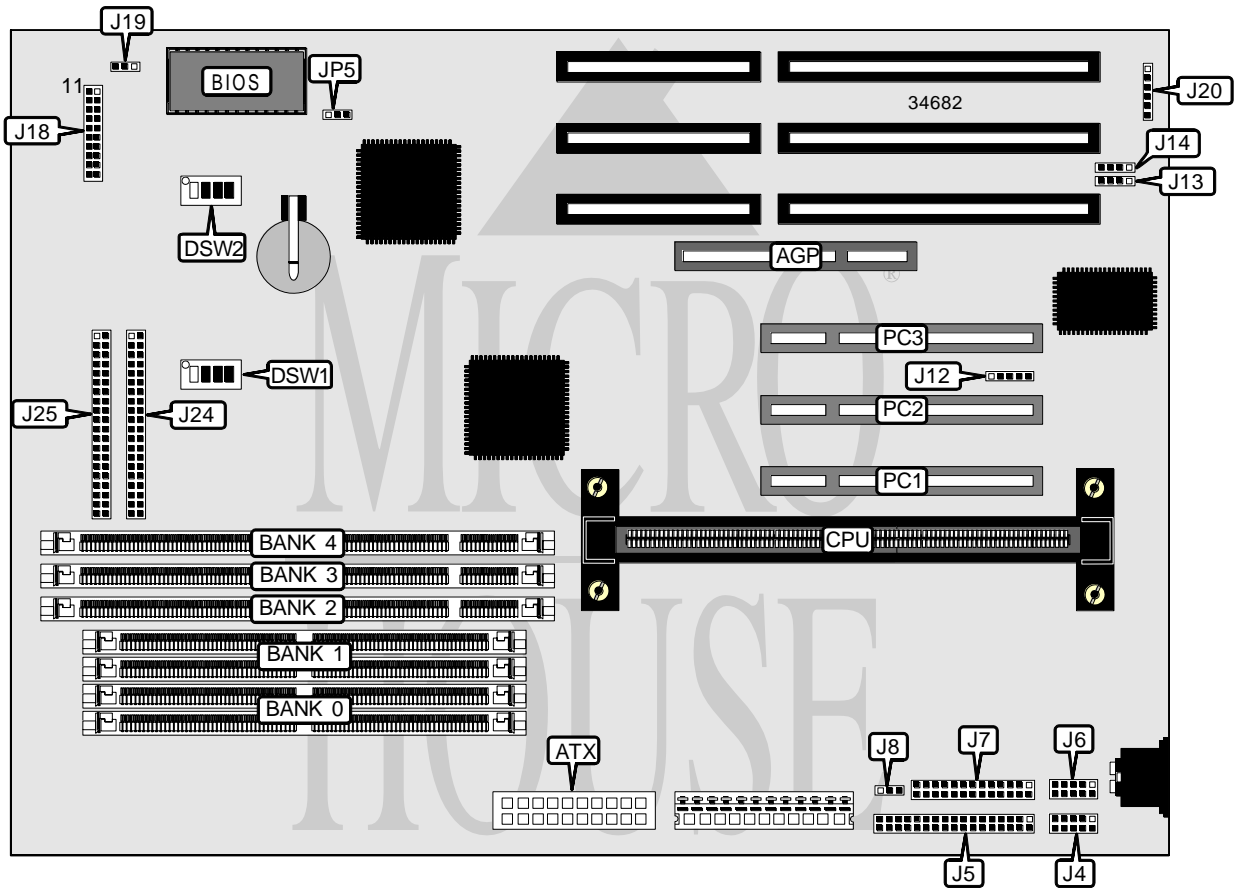


TMC RESEARCH CORPORATION

AI6NL (VER. 1.0)

| | |
|-------------------------------|--|
| Processor | Pentium Pro/Pentium II |
| Processor Speed | 150/166/180/200/233/266/300MHz |
| Chip Set | Intel |
| Video Chip Set | None |
| Maximum Onboard Memory | 256MB (EDO supported) |
| Maximum Video Memory | None |
| Cache | 256/512KB (located on Pentium Pro/Pentium II CPU) |
| BIOS | AMI |
| Dimensions | 330mm x 218mm |
| I/O Options | 32-bit PCI slots (3), floppy drive interface, IDE interfaces (2), parallel port, PS/2 mouse interface, serial ports (2), IR connector, USB connectors (2), ATX power connector, AGP slot |
| NPU Options | None |



Continued on next page...

TMC RESEARCH CORPORATION
AI6NL (VER. 1.0)

... continued from previous page

| CONNECTIONS | | | |
|------------------------|----------------|-----------------------|------------------|
| Purpose | Location | Purpose | Location |
| AGP slot | AGP | Green PC connector | J18/pins 6 & 16 |
| ATX power connector | ATX | Soft off power supply | J18/pins 7 & 17 |
| Serial port 1 | J4 | Turbo LED | J18/pins 8 & 18 |
| Floppy drive interface | J5 | Reset switch | J18/pins 9 & 19 |
| Serial port 2 | J6 | IDE interface LED | J18/pins 10 & 20 |
| Parallel port | J7 | Power LED & keylock | J18/pins 11 - 15 |
| CPU fan power | J8 | Chassis fan power | J19 |
| IR connector | J12 | PS/2 mouse interface | J20 |
| USB connector 1 | J13 | IDE interface 2 | J24 |
| USB connector 2 | J14 | IDE interface 1 | J25 |
| Speaker | J18/pins 1 - 4 | 32-bit PCI slots | PC1 – PC3 |

| USER CONFIGURABLE SETTINGS | | |
|--------------------------------|-------|-------------------|
| Function | Label | Position |
| í CMOS memory normal operation | JP5 | Pins 1 & 2 closed |
| CMOS memory clear | JP5 | Pins 2 & 3 closed |

| SIMM CONFIGURATION | | |
|--------------------|--------------|--------------|
| Size | Bank 0 | Bank 1 |
| 8MB | (2) 1M x 36 | None |
| 16MB | (2) 2M x 36 | None |
| 16MB | (2) 1M x 36 | (2) 1M x 36 |
| 24MB | (2) 2M x 36 | (2) 1M x 36 |
| 32MB | (2) 4M x 36 | None |
| 32MB | (2) 2M x 36 | (2) 2M x 36 |
| 40MB | (2) 4M x 36 | (2) 1M x 36 |
| 48MB | (2) 4M x 36 | (2) 2M x 36 |
| 64MB | (2) 8M x 36 | None |
| 64MB | (2) 4M x 36 | (2) 4M x 36 |
| 72MB | (2) 8M x 36 | (2) 1M x 36 |
| 80MB | (2) 8M x 36 | (2) 2M x 36 |
| 96MB | (2) 8M x 36 | (2) 4M x 36 |
| 128MB | (2) 8M x 36 | (2) 8M x 36 |
| 128MB | (2) 16M x 36 | None |
| 136MB | (2) 16M x 36 | (2) 1M x 36 |
| 144MB | (2) 16M x 36 | (2) 2M x 36 |
| 160MB | (2) 16M x 36 | (2) 4M x 36 |
| 192MB | (2) 16M x 36 | (2) 8M x 36 |
| 256MB | (2) 16M x 36 | (2) 16M x 36 |

Note: Board accepts EDO memory.

Continued on next page. . .

TMC RESEARCH CORPORATION
AI6NL (VER. 1.0)

... continued from previous page

| DIMM CONFIGURATION | | | |
|--------------------|--------------|-------------|-------------|
| Size | Bank 2 | Bank 3 | Bank 4 |
| 8MB | (1) 1M x 64 | None | None |
| 16MB | (1) 2M x 64 | None | None |
| 16MB | (1) 1M x 64 | (1) 1M x 64 | None |
| 24MB | (1) 2M x 64 | (1) 1M x 64 | None |
| 24MB | (1) 1M x 64 | (1) 1M x 64 | (1) 1M x 64 |
| 32MB | (1) 4M x 64 | None | None |
| 32MB | (1) 2M x 64 | (1) 1M x 64 | (1) 1M x 64 |
| 32MB | (1) 2M x 64 | (1) 2M x 64 | None |
| 40MB | (1) 4M x 64 | (1) 1M x 64 | None |
| 40MB | (1) 2M x 64 | (1) 2M x 64 | (1) 1M x 64 |
| 48MB | (1) 4M x 64 | (1) 1M x 64 | (1) 1M x 64 |
| 48MB | (1) 4M x 64 | (1) 2M x 64 | None |
| 48MB | (1) 2M x 64 | (1) 2M x 64 | (1) 2M x 64 |
| 56MB | (1) 4M x 64 | (1) 2M x 64 | (1) 1M x 64 |
| 64MB | (1) 8M x 64 | None | None |
| 64MB | (1) 4M x 64 | (1) 2M x 64 | (1) 2M x 64 |
| 64MB | (1) 4M x 64 | (1) 4M x 64 | None |
| 72MB | (1) 8M x 64 | (1) 1M x 64 | None |
| 72MB | (1) 4M x 64 | (1) 4M x 64 | (1) 1M x 64 |
| 80MB | (1) 8M x 64 | (1) 1M x 64 | (1) 1M x 64 |
| 80MB | (1) 8M x 64 | (1) 2M x 64 | None |
| 80MB | (1) 4M x 64 | (1) 4M x 64 | (1) 2M x 64 |
| 88MB | (1) 8M x 64 | (1) 2M x 64 | (1) 1M x 64 |
| 96MB | (1) 8M x 64 | (1) 2M x 64 | (1) 2M x 64 |
| 96MB | (1) 8M x 64 | (1) 4M x 64 | None |
| 96MB | (1) 4M x 64 | (1) 4M x 64 | (1) 4M x 64 |
| 104MB | (1) 8M x 64 | (1) 4M x 64 | (1) 1M x 64 |
| 112MB | (1) 8M x 64 | (1) 4M x 64 | (1) 2M x 64 |
| 128MB | (1) 16M x 64 | None | None |
| 128MB | (1) 8M x 64 | (1) 4M x 64 | (1) 4M x 64 |
| 128MB | (1) 8M x 64 | (1) 8M x 64 | None |
| 136MB | (1) 8M x 64 | (1) 8M x 64 | (1) 1M x 64 |
| 144MB | (1) 8M x 64 | (1) 8M x 64 | (1) 2M x 64 |
| 160MB | (1) 8M x 64 | (1) 8M x 64 | (1) 4M x 64 |
| 192MB | (1) 8M x 64 | (1) 8M x 64 | (1) 8M x 64 |

Note: Board accepts EDO memory.

Continued on next page. . .

TMC RESEARCH CORPORATION
 AI6NL (VER. 1.0)

... continued from previous page

CACHE CONFIGURATION

Note: 256KB/512KB cache is located on the Pentium Pro/Pentium II CPU.

CPU SPEED SELECTION (PENTIUM PRO)

| CPU speed | Clock speed | Multiplier | DSW1/1 | DSW1/2 | DSW1/3 | DSW1/4 |
|-----------|-------------|------------|--------|--------|--------|--------|
| 150MHz | 60MHz | 2.5x | Off | Off | Off | On |
| 166MHz | 66MHz | 2.5x | Off | Off | Off | Off |
| 180MHz | 60MHz | 3x | Off | Off | Off | On |
| 200MHz | 66MHz | 3x | Off | Off | Off | Off |

CPU SPEED SELECTION (PENTIUM PRO, CON'T)

| CPU speed | Clock speed | Multiplier | DSW2/1 | DSW2/2 | DSW2/3 | DSW2/4 |
|-----------|-------------|------------|--------|--------|--------|--------|
| 150MHz | 60MHz | 2.5x | On | On | Off | On |
| 166MHz | 66MHz | 2.5x | On | On | Off | On |
| 180MHz | 60MHz | 3x | On | Off | On | On |
| 200MHz | 66MHz | 3x | On | Off | On | On |

CPU SPEED SELECTION (PENTIUM II)

| CPU speed | Clock speed | Multiplier | DSW1/1 | DSW1/2 | DSW1/3 | DSW1/4 |
|-----------|-------------|------------|--------|--------|--------|--------|
| 233MHz | 66MHz | 3.5x | Off | Off | Off | Off |
| 266MHz | 66MHz | 4x | Off | Off | Off | Off |
| 300MHz | 66MHz | 4.5x | Off | Off | Off | Off |

CPU SPEED SELECTION (PENTIUM II, CON'T)

| CPU speed | Clock speed | Multiplier | DSW2/1 | DSW2/2 | DSW2/3 | DSW2/4 |
|-----------|-------------|------------|--------|--------|--------|--------|
| 233MHz | 66MHz | 3.5x | On | Off | Off | On |
| 266MHz | 66MHz | 4x | Off | On | On | On |
| 300MHz | 66MHz | 4.5x | Off | On | Off | On |