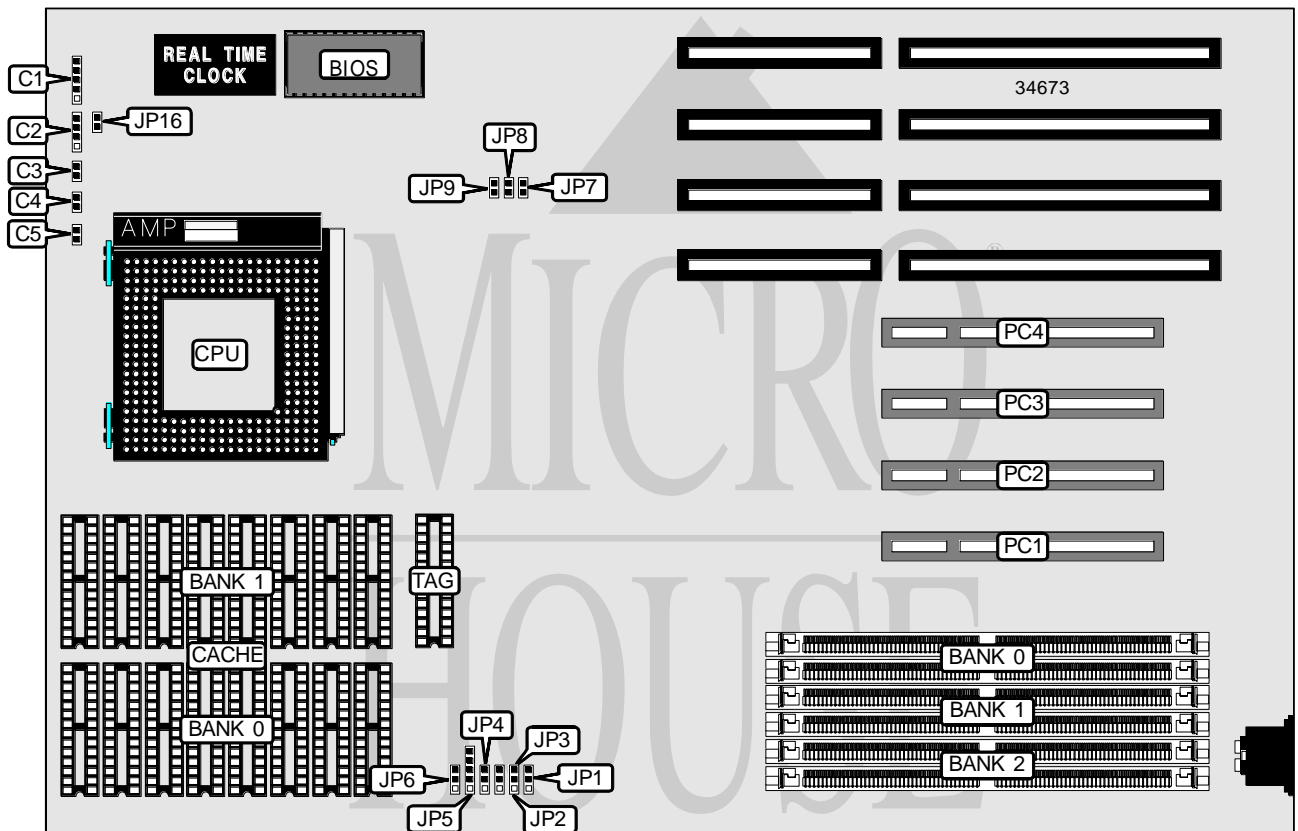


# FREE COMPUTER TECHNOLOGY, INC.

## 586F54

<b>Processor</b>	Pentium
<b>Processor Speed</b>	75/90/100MHz
<b>Chip Set</b>	SIS
<b>Video Chip Set</b>	None
<b>Maximum Onboard Memory</b>	128MB
<b>Maximum Video Memory</b>	None
<b>Cache</b>	256/512/1024/2048KB
<b>BIOS</b>	Award
<b>Dimensions</b>	330mm x 218mm
<b>I/O Options</b>	32-bit PCI slots (4), green PC connector
<b>NPU Options</b>	None



C6 →  
LOCATION UNIDENTIFIED

Continued on next page...

# FREE COMPUTER TECHNOLOGY, INC.

586F54

... continued from previous page

CONNECTIONS			
Purpose	Location	Purpose	Location
Power LED & keylock	C1	Turbo LED	C5
Speaker	C2	Green PC connector	C6
Reset switch	C3	32-bit PCI slots	PC1 – PC4
Turbo switch	C4		

USER CONFIGURABLE SETTINGS		
Function	Label	Position
í CMOS memory normal operation	JP16	Unidentified
CMOS memory clear	JP16	Unidentified

SIMM CONFIGURATION			
Size	Bank 0	Bank 1	Bank 2
2MB	(2) 256K x 36	None	None
4MB	(2) 256K x 36	(2) 256K x 36	None
4MB	(2) 512K x 36	None	None
8MB	(2) 512K x 36	None	(2) 512K x 36
8MB	(2) 1M x 36	None	None
12MB	(2) 256K x 36	(2) 256K x 36	(2) 1M x 36
12MB	(2) 512K x 36	None	(2) 1M x 36
16MB	(2) 1M x 36	(2) 1M x 36	None
16MB	(2) 2M x 36	None	None
20MB	(2) 512K x 36	None	(2) 2M x 36
24MB	(2) 1M x 36	(2) 1M x 36	(2) 1M x 36
32MB	(2) 1M x 36	(2) 1M x 36	(2) 2M x 36
32MB	(2) 2M x 36	None	(2) 2M x 36
32MB	(2) 4M x 36	None	None
36MB	(2) 256K x 36	(2) 256K x 36	(2) 4M x 36
36MB	(2) 512K x 36	None	(2) 4M x 36
40MB	(2) 1M x 36	(2) 4M x 36	None
48MB	(2) 1M x 36	(2) 1M x 36	(2) 4M x 36
48MB	(2) 2M x 36	None	(2) 4M x 36
64MB	(2) 4M x 36	(2) 4M x 36	None
64MB	(2) 8M x 36	None	None
72MB	(2) 1M x 36	(2) 4M x 36	(2) 4M x 36
80MB	(2) 1M x 36	(2) 1M x 36	(2) 8M x 36
80MB	(2) 2M x 36	None	(2) 8M x 36
96MB	(2) 4M x 36	(2) 4M x 36	(2) 4M x 36
128MB	(2) 8M x 36	None	(2) 8M x 36

Continued on next page. . .

... continued from previous page

CACHE CONFIGURATION			
Size	Bank 0	Bank 1	TAG
256KB	(8) 32K x 8	None	(1) 16K/32K x 8
512KB (A)	(8) 32K x 8	(8) 32K x 8	(1) 16K/32K x 8
512KB (B)	(8) 64K x 8	None	(1) 16K/32K x 8
1MB (A)	(8) 64K x 8	(8) 64K x 8	(1) 32K x 8
1MB (B)	(8) 128K x 8	None	(1) 32K x 8
2MB	(8) 128K x 8	(8) 128K x 8	(1) 64K x 8

CACHE JUMPER CONFIGURATION						
Size	JP1	JP2	JP3	JP4	JP5	JP6
256KB	1 & 2	1 & 2	1 & 2	1 & 2	1 & 2, 3 & 4	2 & 3
512KB (A)	2 & 3	1 & 2	1 & 2	2 & 3	2 & 3, 4 & 5	2 & 3
512KB (B)	2 & 3	1 & 2	1 & 2	1 & 2	1 & 2, 3 & 4	1 & 2
1MB (A)	2 & 3	2 & 3	1 & 2	2 & 3	2 & 3, 4 & 5	2 & 3
1MB (B)	2 & 3	2 & 3	1 & 2	1 & 2	1 & 2, 3 & 4	2 & 3
2MB	2 & 3	2 & 3	2 & 3	2 & 3	2 & 3, 4 & 5	2 & 3

Note: Pins designated should be in the closed position.

CPU SPEED SELECTION					
CPU speed	Clock speed	Multiplier	JP7	JP8	JP9
75MHz	50MHz	1.5x	Closed	Open	Open
90MHz	60MHz	1.5x	Open	Closed	Open
100MHz	66MHz	1.5x	Closed	Open	Closed