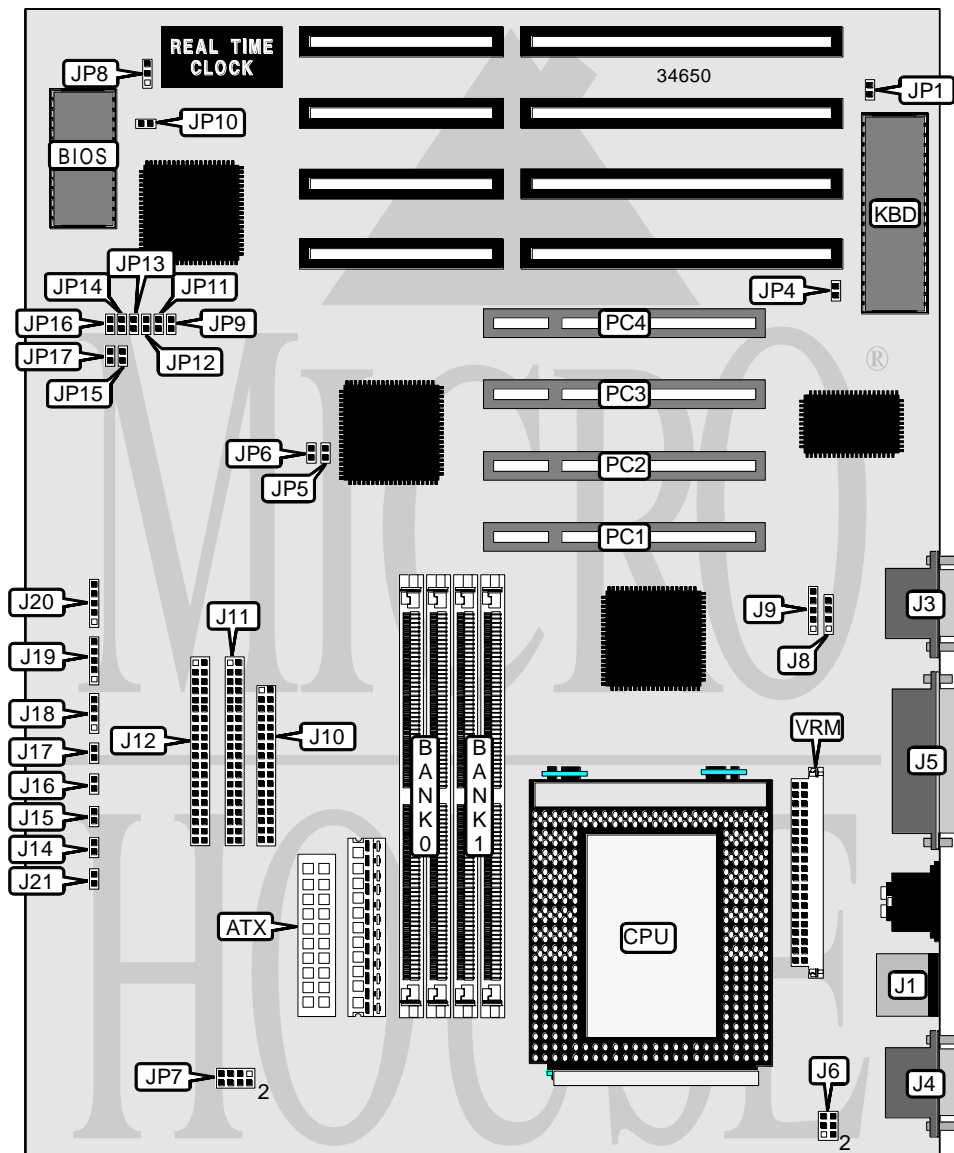


DIAMOND FLOWER, INC. G6861PA (REV. B+)

| | |
|-------------------------------|--|
| Processor | Pentium Pro |
| Processor Speed | 150/166/180/200MHz |
| Chip Set | Intel |
| Video Chip Set | None |
| Maximum Onboard Memory | 512MB (EDO supported) |
| Maximum Video Memory | None |
| Cache | 256/512KB (located on Pentium Pro CPU) |
| BIOS | Award |
| Dimensions | 305mm x 225mm |
| I/O Options | 32-bit PCI slots (4), floppy drive interface, green PC connector, IDE interfaces (2), parallel port, PS/2 mouse port, serial ports (2), IR connector, VRM connector, USB connectors (2), ATX power connector |
| NPU Options | None |



Continued on next page. . .

DIAMOND FLOWER, INC.
G6861PA (REV. B+)

... continued from previous page

| CONNECTIONS | | | |
|------------------------|----------|-----------------------|-----------|
| Purpose | Location | Purpose | Location |
| ATX power connector | ATX | Front panel connector | J14 |
| PS/2 mouse port | J1 | Front panel connector | J15 |
| Serial port 2 | J3 | Front panel connector | J16 |
| Serial port 1 | J4 | Front panel connector | J17 |
| Parallel port | J5 | Front panel connector | J18 |
| USB connector 1 | J8 | Front panel connector | J19 |
| USB connector 2 | J9 | Front panel connector | J20 |
| Floppy drive interface | J10 | Front panel connector | J21 |
| IDE interface 2 | J11 | 32-bit PCI slots | PC1 – PC4 |
| IDE interface 1 | J12 | VRM connector | VRM |

Note: Exact function of the individual front panel connectors is unidentified.

| USER CONFIGURABLE SETTINGS | | |
|-------------------------------------|-------|--------------|
| Function | Label | Position |
| í Factory configured - do not alter | J6 | Unidentified |
| í PS/2 mouse enabled | JP1 | Closed |
| PS/2 mouse disabled | JP1 | Open |
| í Monitor type select color | JP4 | Closed |
| Monitor type select monochrome | JP4 | Open |
| í Factory configured - do not alter | JP8 | Unidentified |
| í Factory configured - do not alter | JP9 | Closed |
| í CMOS memory normal operation | JP10 | Open |
| CMOS memory clear | JP10 | Closed |
| í Factory configured - do not alter | JP11 | Open |

Note: The type of front panel connectors are unidentified.

| SIMM CONFIGURATION | | |
|--------------------|-------------|-------------|
| Size | Bank 0 | Bank 1 |
| 8MB | (2) 1M x 36 | None |
| 16MB | (2) 2M x 36 | None |
| 16MB | (2) 1M x 36 | (2) 1M x 36 |
| 24MB | (2) 2M x 36 | (2) 1M x 36 |
| 32MB | (2) 4M x 36 | None |
| 32MB | (2) 2M x 36 | (2) 2M x 36 |
| 40MB | (2) 4M x 36 | (2) 1M x 36 |
| 48MB | (2) 4M x 36 | (2) 2M x 36 |
| 64MB | (2) 8M x 36 | None |
| 64MB | (2) 4M x 36 | (2) 4M x 36 |
| 72MB | (2) 8M x 36 | (2) 1M x 36 |
| 80MB | (2) 8M x 36 | (2) 2M x 36 |
| 96MB | (2) 8M x 36 | (2) 4M x 36 |
| 128MB | (2) 8M x 36 | (2) 8M x 36 |

Continued on next page...

DIAMOND FLOWER, INC.
G6861PA (REV. B+)

... continued from previous page

| SIMM CONFIGURATION (CON'T) | | |
|----------------------------|--------------|--------------|
| Size | Bank 0 | Bank 1 |
| 128MB | (2) 16M x 36 | None |
| 136MB | (2) 16M x 36 | (2) 1M x 36 |
| 144MB | (2) 16M x 36 | (2) 2M x 36 |
| 160MB | (2) 16M x 36 | (2) 4M x 36 |
| 192MB | (2) 16M x 36 | (2) 8M x 36 |
| 256MB | (2) 16M x 36 | (2) 16M x 36 |
| 256MB | (2) 32M x 36 | None |
| 264MB | (2) 32M x 36 | (2) 1M x 36 |
| 272MB | (2) 32M x 36 | (2) 2M x 36 |
| 288MB | (2) 32M x 36 | (2) 4M x 36 |
| 320MB | (2) 32M x 36 | (2) 8M x 36 |
| 384MB | (2) 32M x 36 | (2) 16M x 36 |
| 512MB | (2) 32M x 36 | (2) 32M x 36 |

Note: Board accepts EDO memory. Board also accepts x 32 SIMMs.

| CACHE CONFIGURATION |
|--|
| Note: 256KB/512KB cache is located on the Pentium Pro CPU. |

| CPU SPEED SELECTION | | | | | | |
|---------------------|-------------|------------|--------|--------|--------|--------|
| CPU speed | Clock speed | Multiplier | JP5 | JP6 | JP12 | JP13 |
| 150MHz | 60MHz | 2.5x | Open | Closed | Open | Closed |
| 166MHz | 66MHz | 2.5x | Closed | Open | Open | Closed |
| 180MHz | 60MHz | 3x | Open | Closed | Closed | Open |
| 200MHz | 66MHz | 3x | Closed | Open | Closed | Open |

| CPU SPEED SELECTION (CON'T) | | | | | | |
|-----------------------------|-------------|------------|--------|--------|--------|--------|
| CPU speed | Clock speed | Multiplier | JP14 | JP15 | JP16 | JP17 |
| 150MHz | 60MHz | 2.5x | Closed | Closed | Closed | Open |
| 166MHz | 66MHz | 2.5x | Closed | Open | Closed | Closed |
| 180MHz | 60MHz | 3x | Closed | Closed | Closed | Open |
| 200MHz | 66MHz | 3x | Closed | Open | Closed | Closed |

Continued on next page...

DIAMOND FLOWER, INC.
G6861PA (REV. B+)

... continued from previous page

| CPU VOLTAGE SELECTION | | | | |
|-----------------------|----------------|----------------|----------------|----------------|
| Voltage | JP7/pins 1 & 2 | JP7/pins 3 & 4 | JP7/pins 5 & 6 | JP7/pins 7 & 8 |
| VID support | Open | Open | Open | Open |
| í 2.1v | Closed | Open | Open | Open |
| 2.2v | Open | Closed | Open | Open |
| 2.3v | Closed | Closed | Open | Open |
| 2.4v | Open | Open | Closed | Open |
| 2.5v | Closed | Open | Closed | Open |
| 2.6v | Open | Closed | Closed | Open |
| 2.7v | Closed | Closed | Closed | Open |
| 2.8v | Open | Open | Open | Closed |
| 2.9v | Closed | Open | Open | Closed |
| 3.0v | Open | Closed | Open | Closed |
| 3.1v | Closed | Closed | Open | Closed |
| 3.2v | Open | Open | Closed | Closed |
| 3.3v | Closed | Open | Closed | Closed |
| 3.4v | Open | Closed | Closed | Closed |
| 3.5v | Closed | Closed | Closed | Closed |