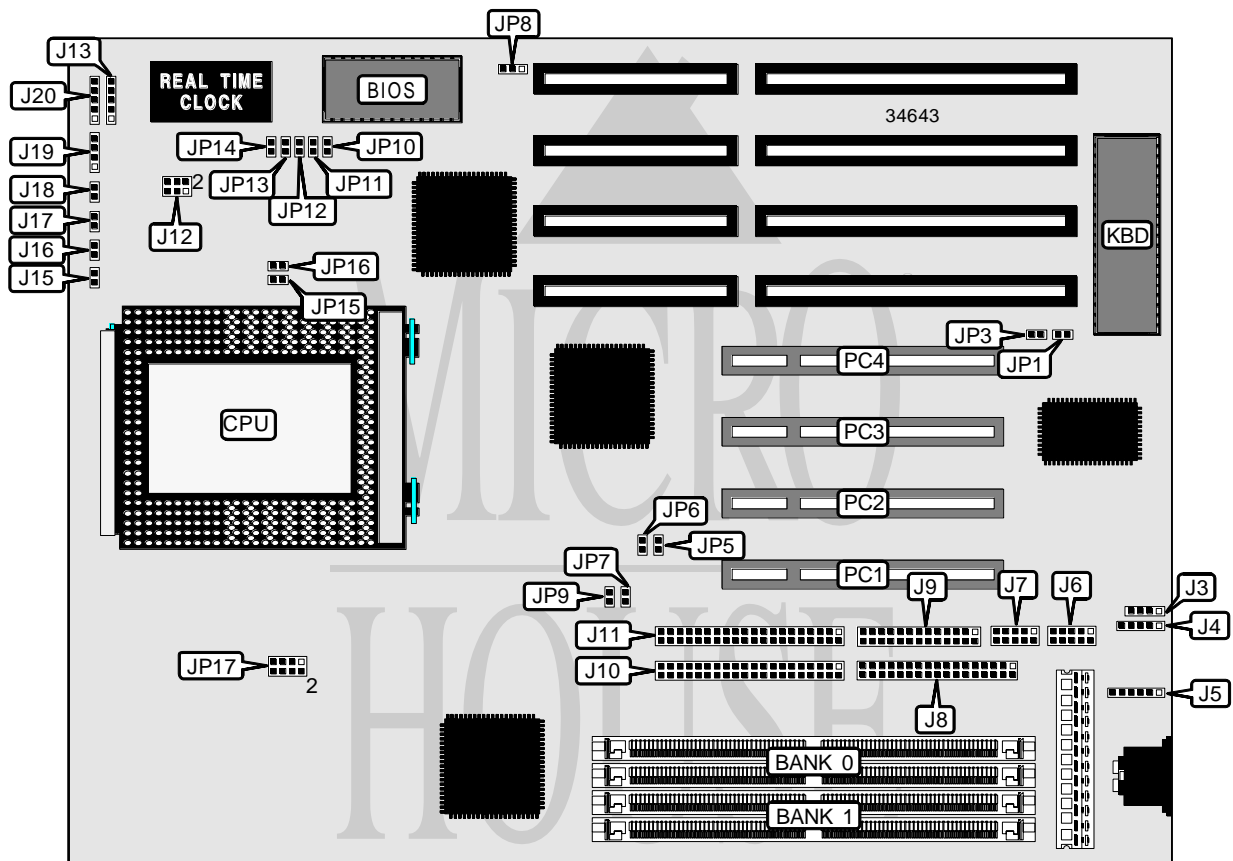


# DIAMOND FLOWER, INC. G686IPB (REV. BAO+)

<b>Processor</b>	Pentium Pro
<b>Processor Speed</b>	150/166/180/200MHz
<b>Chip Set</b>	Intel
<b>Video Chip Set</b>	None
<b>Maximum Onboard Memory</b>	512MB (EDO supported)
<b>Maximum Video Memory</b>	None
<b>Cache</b>	256/512KB (located on Pentium Pro CPU)
<b>BIOS</b>	Unidentified
<b>Dimensions</b>	290mm x 220mm
<b>I/O Options</b>	32-bit PCI slots (4), floppy drive interface, IDE interfaces (2), parallel port, PS/2 mouse interface, serial ports (2), IR connector, USB connectors (2)
<b>NPU Options</b>	None



*Continued on next page. . .*

DIAMOND FLOWER, INC.  
G6861PB (REV. BAO+)

... continued from previous page

CONNECTIONS			
Purpose	Location	Purpose	Location
USB connector	J3	Front panel connector	J13
USB connector	J4	Front panel connector	J15
PS/2 mouse interface	J5	Front panel connector	J16
Serial port 2	J6	Front panel connector	J17
Serial port 1	J7	Front panel connector	J18
Floppy drive interface	J8	Front panel connector	J19
Parallel port	J9	Front panel connector	J20
IDE interface 1	J10	32-bit PCI slots	PC1 – PC4
IDE interface 2	J11		

USER CONFIGURABLE SETTINGS		
Function	Label	Position
í Factory configured - do not alter	J12	Unidentified
í Monitor type select color	JP1	Closed
Monitor type select monochrome	JP1	Open
í PS/2 mouse enabled	JP3	Closed
PS/2 mouse disabled	JP3	Open
í Factory configured - do not alter	JP8	Unidentified
í CMOS memory normal operation	JP14	Open
CMOS memory clear	JP14	Closed
í Factory configured - do not alter	JP15	Closed
í Factory configured - do not alter	JP16	Open

SIMM CONFIGURATION		
Size	Bank 0	Bank 1
8MB	(2) 1M x 36	None
16MB	(2) 2M x 36	None
16MB	(2) 1M x 36	(2) 1M x 36
24MB	(2) 2M x 36	(2) 1M x 36
32MB	(2) 4M x 36	None
32MB	(2) 2M x 36	(2) 2M x 36
40MB	(2) 4M x 36	(2) 1M x 36
48MB	(2) 4M x 36	(2) 2M x 36
64MB	(2) 8M x 36	None
64MB	(2) 4M x 36	(2) 4M x 36
72MB	(2) 8M x 36	(2) 1M x 36
80MB	(2) 8M x 36	(2) 2M x 36
96MB	(2) 8M x 36	(2) 4M x 36
128MB	(2) 8M x 36	(2) 8M x 36

Continued on next page. . .

DIAMOND FLOWER, INC.  
G686IPB (REV. BAO+)

... continued from previous page

SIMM CONFIGURATION (CON'T)		
Size	Bank 0	Bank 1
128MB	(2) 16M x 36	None
136MB	(2) 16M x 36	(2) 1M x 36
144MB	(2) 16M x 36	(2) 2M x 36
160MB	(2) 16M x 36	(2) 4M x 36
192MB	(2) 16M x 36	(2) 8M x 36
256MB	(2) 16M x 36	(2) 16M x 36
256MB	(2) 32M x 36	None
264MB	(2) 32M x 36	(2) 1M x 36
272MB	(2) 32M x 36	(2) 2M x 36
288MB	(2) 32M x 36	(2) 4M x 36
320MB	(2) 32M x 36	(2) 8M x 36
384MB	(2) 32M x 36	(2) 16M x 36
512MB	(2) 32M x 36	(2) 32M x 36

Note: Board accepts EDO memory. Board also accepts x 32 SIMMs.

CACHE CONFIGURATION
Note: 256KB/512KB cache is located on the Pentium Pro CPU.

CPU SPEED SELECTION						
CPU speed	Clock speed	Multiplier	JP5	JP6	JP7	JP9
150MHz	60MHz	2.5x	Closed	Open	Closed	Open
166MHz	66MHz	2.5x	Open	Closed	Open	Closed
180MHz	60MHz	3x	Closed	Open	Closed	Open
200MHz	66MHz	3x	Open	Closed	Open	Closed

CPU SPEED SELECTION (CON'T)						
CPU speed	Clock speed	Multiplier	JP10	JP11	JP12	JP13
150MHz	60MHz	2.5x	Open	Closed	Closed	Closed
166MHz	66MHz	2.5x	Open	Closed	Closed	Closed
180MHz	60MHz	3x	Closed	Open	Closed	Closed
200MHz	66MHz	3x	Closed	Open	Closed	Closed

Continued on next page...

DIAMOND FLOWER, INC.  
G686IPB (REV. BAO+)

... continued from previous page

CPU VOLTAGE SELECTION				
Voltage	JP17/pins 1 & 2	JP17/pins 3 & 4	JP17/pins 5 & 6	JP17/pins 7 & 8
VID support	Open	Open	Open	Open
í 2.1v	Closed	Open	Open	Open
2.2v	Open	Closed	Open	Open
2.3v	Closed	Closed	Open	Open
2.4v	Open	Open	Closed	Open
2.5v	Closed	Open	Closed	Open
2.6v	Open	Closed	Closed	Open
2.7v	Closed	Closed	Closed	Open
2.8v	Open	Open	Open	Closed
2.9v	Closed	Open	Open	Closed
3.0v	Open	Closed	Open	Closed
3.1v	Closed	Closed	Open	Closed
3.2v	Open	Open	Closed	Closed
3.3v	Closed	Open	Closed	Closed
3.4v	Open	Closed	Closed	Closed
3.5v	Closed	Closed	Closed	Closed