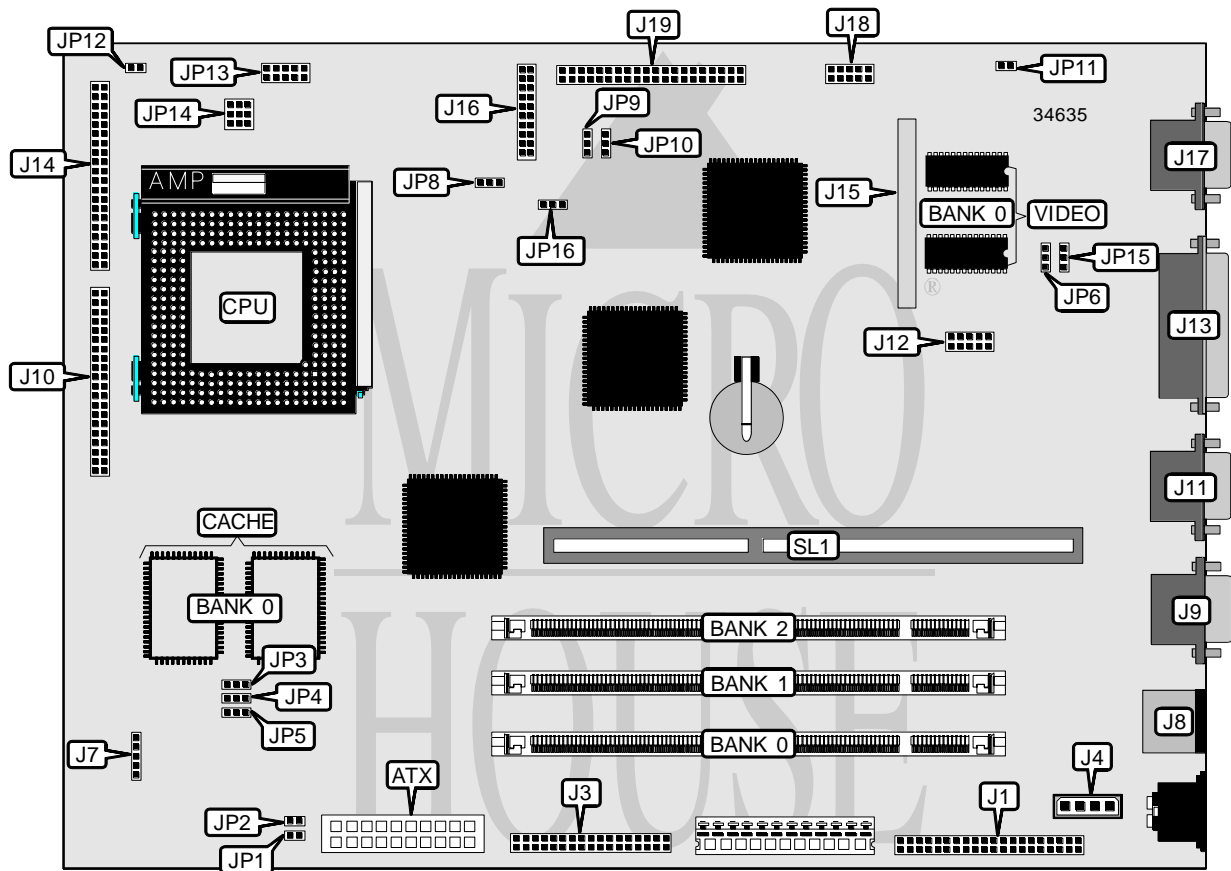


ELITEGROUP COMPUTER SYSTEMS, INC.

P5TX-LA

Processor	CX 6X86/CX 6X86L/CX 686MX/IBM 6X86/ IBM 6X86L/IBM 686MX/ AM K5/AM K6/Pentium
Processor Speed	75/90/100/120/133/150/166/200/233/266MHz
Chip Set	Intel
Video Chip Set	ATI
Maximum Onboard Memory	256MB (EDO supported)
Maximum Video Memory	4MB
Cache	256/512KB
BIOS	Award
Dimensions	330mm x 218mm
I/O Options	Floppy drive interface, green PC connector, IDE interfaces (2), parallel port, PS/2 mouse port, serial ports (2), VGA feature connector, VGA port, IR connector, USB connector, ATX power connector, audio in – CD-ROM, audio connector, TV-out connector
NPU Options	None



Continued on next page. . .

ELITEGROUP COMPUTER SYSTEMS, INC.
P5TX-LA

... continued from previous page

CONNECTIONS			
Purpose	Location	Purpose	Location
ATX power connector	ATX	Green PC connector	J16/pins 4 & 5
External audio connector	J1	Turbo switch	J16/pins 6 & 7
Floppy drive interface	J3	Reset switch	J16/pins 9 & 10
Audio in – CD-ROM	J4	Keylock	J16/pins 11 - 15
IR connector	J7	Speaker	J16/pins 17 - 20
PS/2 mouse port	J8	VGA port	J17
Serial port 1	J9	TV out connector	J18
IDE interface 2	J10	VGA feature connector	J19
Serial port 2	J11	Soft off power supply	JP1
USB connector	J12	Wake up on modem connector	JP2
Parallel port	J13	CPU fan power	JP8
IDE interface 1	J14	IDE interface LED	JP12
Memory socket	J15	EISA slot	SL1
Power LED	J16/pins 2 & 3		

USER CONFIGURABLE SETTINGS		
Function	Label	Position
Flash BIOS normal operation	JP6	Pins 2 & 3 closed
Flash BIOS flash mode	JP6	Pins 1 & 2 closed
CMOS memory normal operation	JP15	Pins 2 & 3 closed
CMOS memory clear	JP15	Pins 1 & 2 closed

DIMM CONFIGURATION			
Size	Bank 0	Bank 1	Bank 2
8MB	(1) 1M x 64	None	None
16MB	(1) 2M x 64	None	None
16MB	(1) 1M x 64	(1) 1M x 64	None
24MB	(1) 2M x 64	(1) 1M x 64	None
24MB	(1) 1M x 64	(1) 1M x 64	(1) 1M x 64
32MB	(1) 4M x 64	None	None
32MB	(1) 2M x 64	(1) 2M x 64	None
40MB	(1) 4M x 64	(1) 1M x 64	None
48MB	(1) 4M x 64	(1) 2M x 64	None
48MB	(1) 2M x 64	(1) 2M x 64	(1) 2M x 64
64MB	(1) 8M x 64	None	None
64MB	(1) 4M x 64	(1) 4M x 64	None
72MB	(1) 8M x 64	(1) 1M x 64	None
80MB	(1) 8M x 64	(1) 2M x 64	None
96MB	(1) 8M x 64	(1) 4M x 64	None
96MB	(1) 4M x 64	(1) 4M x 64	(1) 4M x 64
128MB	(1) 16M x 64	None	None
128MB	(1) 8M x 64	(1) 8M x 64	None
136MB	(1) 16M x 64	(1) 1M x 64	None

Continued on next page...

ELITEGROUP COMPUTER SYSTEMS, INC.
P5TX-LA

... continued from previous page

DIMM CONFIGURATION (CON'T)			
Size	Bank 0	Bank 1	Bank 2
144MB	(1) 16M x 64	(1) 2M x 64	None
160MB	(1) 16M x 64	(1) 4M x 64	None
192MB	(1) 16M x 64	(1) 8M x 64	None
192MB	(1) 8M x 64	(1) 8M x 64	(1) 8M x 64
256MB	(1) 16M x 64	(1) 16M x 64	None

Note: Board accepts EDO memory.

CACHE CONFIGURATION	
Size	Bank 0
256KB	(2) 32K x 32
512KB	(2) 64K x 32

VIDEO MEMORY CONFIGURATION		
Size	Bank 0	J15
2MB	2MB	Not Installed
4MB	2MB	2MB module installed

CPU SPEED SELECTION (CX 6X86/6X86L)						
CPU speed	Clock speed	Multiplier	JP3	JP4	JP5	JP14
120MHz	50MHz	2x	2 & 3	2 & 3	2 & 3	2 & 5, 3 & 6, 4 & 7
133MHz	55MHz	2x	2 & 3	2 & 3	1 & 2	2 & 5, 3 & 6, 4 & 7
150MHz	60MHz	2x	1 & 2	2 & 3	2 & 3	2 & 5, 3 & 6, 4 & 7
166MHz	66MHz	2x	2 & 3	1 & 2	2 & 3	2 & 5, 3 & 6, 4 & 7
200MHz	75MHz	2x	1 & 2	2 & 3	1 & 2	2 & 5, 3 & 6, 4 & 7

Note: Pins designated should be in the closed position.

CPU SPEED SELECTION (CX 6X86MX)						
CPU speed	Clock speed	Multiplier	JP3	JP4	JP5	JP14
166MHz	60MHz	2.5x	1 & 2	2 & 3	2 & 3	3 & 6, 4 & 7, 5 & 8
200MHz	66MHz	2.5x	2 & 3	1 & 2	2 & 3	3 & 6, 4 & 7, 5 & 8
233MHz	66MHz	3x	2 & 3	1 & 2	2 & 3	1 & 4, 3 & 6, 5 & 8
233MHz	75MHz	2.5x	1 & 2	2 & 3	1 & 2	3 & 6, 4 & 7, 5 & 8
266MHz	75MHz	3x	1 & 2	2 & 3	1 & 2	1 & 4, 3 & 6, 5 & 8

Note: Pins designated should be in the closed position.

CPU SPEED SELECTION (IBM 6X86/6X86L)						
CPU speed	Clock speed	Multiplier	JP3	JP4	JP5	JP14
120MHz	50MHz	2x	2 & 3	2 & 3	2 & 3	2 & 5, 3 & 6, 4 & 7
133MHz	55MHz	2x	2 & 3	2 & 3	1 & 2	2 & 5, 3 & 6, 4 & 7
150MHz	60MHz	2x	1 & 2	2 & 3	2 & 3	2 & 5, 3 & 6, 4 & 7
166MHz	66MHz	2x	2 & 3	1 & 2	2 & 3	2 & 5, 3 & 6, 4 & 7
200MHz	75MHz	2x	1 & 2	2 & 3	1 & 2	2 & 5, 3 & 6, 4 & 7

Note: Pins designated should be in the closed position.

Continued on next page...

ELITEGROUP COMPUTER SYSTEMS, INC.
P5TX-LA

... continued from previous page

CPU SPEED SELECTION (IBM 6X86MX)						
CPU speed	Clock speed	Multiplier	JP3	JP4	JP5	JP14
166MHz	60MHz	2.5x	1 & 2	2 & 3	2 & 3	3 & 6, 4 & 7, 5 & 8
200MHz	66MHz	2.5x	2 & 3	1 & 2	2 & 3	3 & 6, 4 & 7, 5 & 8
233MHz	66MHz	3x	2 & 3	1 & 2	2 & 3	1 & 4, 3 & 6, 5 & 8
233MHz	75MHz	2.5x	1 & 2	2 & 3	1 & 2	3 & 6, 4 & 7, 5 & 8
266MHz	75MHz	3x	1 & 2	2 & 3	1 & 2	1 & 4, 3 & 6, 5 & 8

Note: Pins designated should be in the closed position.

CPU SPEED SELECTION (AM K5)						
CPU speed	Clock speed	Multiplier	JP3	JP4	JP5	JP14
75MHz	50MHz	1.5x	2 & 3	2 & 3	2 & 3	1 & 4, 2 & 5, 3 & 6
90MHz	60MHz	1.5x	1 & 2	2 & 3	2 & 3	1 & 4, 2 & 5, 3 & 6
100MHz	66MHz	1.5x	2 & 3	1 & 2	2 & 3	1 & 4, 2 & 5, 3 & 6
120MHz	60MHz	2x	1 & 2	2 & 3	2 & 3	2 & 5, 3 & 6, 4 & 7
133MHz	66MHz	2x	2 & 3	1 & 2	2 & 3	2 & 5, 3 & 6, 4 & 7
150MHz	60MHz	2.5x	1 & 2	2 & 3	2 & 3	3 & 6, 4 & 7, 5 & 8
166MHz	66MHz	2.5x	2 & 3	1 & 2	2 & 3	3 & 6, 4 & 7, 5 & 8

Note: Pins designated should be in the closed position.

CPU SPEED SELECTION (AM K6)						
CPU speed	Clock speed	Multiplier	JP3	JP4	JP5	JP14
166MHz	66MHz	2.5x	2 & 3	1 & 2	2 & 3	3 & 6, 4 & 7, 5 & 8
200MHz	66MHz	3x	2 & 3	1 & 2	2 & 3	1 & 4, 3 & 6, 5 & 8
233MHz	66MHz	3.5x	2 & 3	1 & 2	2 & 3	1 & 4, 2 & 5, 3 & 6

Note: Pins designated should be in the closed position.

CPU SPEED SELECTION (INTEL)						
CPU speed	Clock speed	Multiplier	JP3	JP4	JP5	JP14
75MHz	50MHz	1.5x	2 & 3	2 & 3	2 & 3	1 & 4, 2 & 5, 3 & 6
90MHz	60MHz	1.5x	1 & 2	2 & 3	2 & 3	1 & 4, 2 & 5, 3 & 6
100MHz	66MHz	1.5x	2 & 3	1 & 2	2 & 3	1 & 4, 2 & 5, 3 & 6
120MHz	60MHz	2x	1 & 2	2 & 3	2 & 3	2 & 5, 3 & 6, 4 & 7
133MHz	66MHz	2x	2 & 3	1 & 2	2 & 3	2 & 5, 3 & 6, 4 & 7
150MHz	60MHz	2.5x	1 & 2	2 & 3	2 & 3	3 & 6, 4 & 7, 5 & 8
166MHz	66MHz	2.5x	2 & 3	1 & 2	2 & 3	3 & 6, 4 & 7, 5 & 8
200MHz	66MHz	3x	2 & 3	1 & 2	2 & 3	1 & 4, 3 & 6, 5 & 8
233MHz	66MHz	3.5x	2 & 3	1 & 2	2 & 3	1 & 4, 2 & 5, 3 & 6

Note: Pins designated should be in the closed position.

Continued on next page. . .

ELITEGROUP COMPUTER SYSTEMS, INC.
P5TX-LA

... continued from previous page

CPU VOLTAGE SELECTION	
Voltage	JP13
2.5v	Pins 9 & 10 closed
2.8v	Pins 7 & 8 closed
2.9v	Pins 5 & 6 closed
3.2v	Pins 3 & 4 closed
3.3v	Pins 1 & 2 closed

TV OUT SELECTION		
Setting	JP9	JP10
Not installed	Pins 2 & 3 closed	Pins 2 & 3 closed
Installed	Pins 1 & 2 closed	Pins 1 & 2 closed

ONBOARD VIDEO SELECTION		
Setting	JP11	JP16
Enabled	Open	Pins 1 & 2 closed
Disabled	Closed	Pins 2 & 3 closed