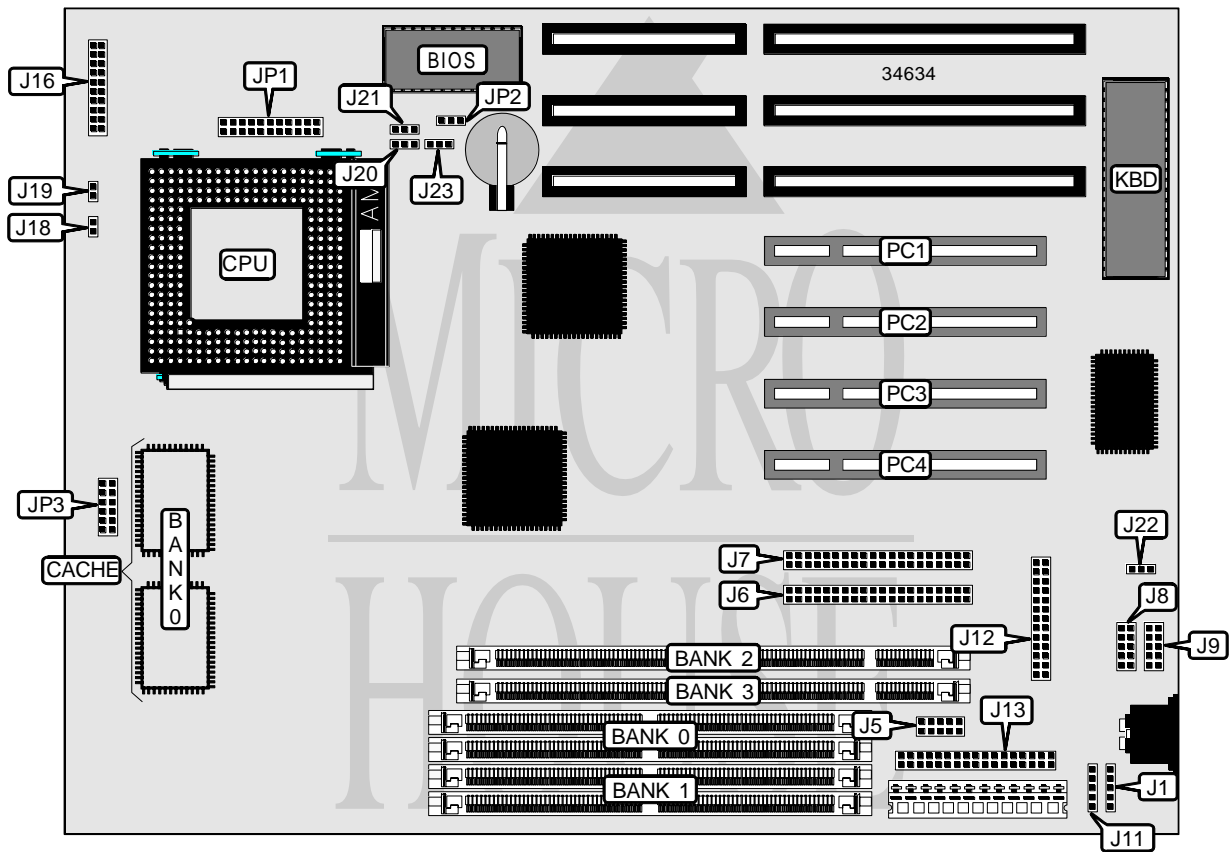


ELITEGROUP COMPUTER SYSTEMS, INC.

P5TX-BPRO

Processor	CX 6X86/CX 6X86L/CX 686MX/IBM 6X86/ IBM 6X86L/IBM 686MX/ AM K5/AM K6/Pentium
Processor Speed	75/90/100/120/133/150/166/200/233/266MHz
Chip Set	Intel
Video Chip Set	None
Maximum Onboard Memory	256MB
Maximum Video Memory	None
Cache	256/512KB
BIOS	Award
Dimensions	254mm x 218mm
I/O Options	32-bit PCI slots (4), floppy drive interface, green PC connector, IDE interfaces (2), parallel port, PS/2 mouse interface, serial ports (2), IR connector, USB connector
NPU Options	None



Continued on next page . . .

ELITEGROUP COMPUTER SYSTEMS, INC.
P5TX-BPRO

... continued from previous page

CONNECTIONS			
Purpose	Location	Purpose	Location
PS/2 mouse interface	J1	Reset switch	J16/pins 9 & 10
USB connector	J5	Keylock	J16/pins 11 - 15
IDE interface 1	J6	Speaker	J16/pins 17 - 20
IDE interface 2	J7	Green PC LED	J18
Serial port 1	J8	IDE interface LED	J19
Serial port 2	J9	Chassis fan power	J20
IR connector	J11	CPU fan power	J21
Parallel port	J12	Power fan	J22
Floppy drive interface	J13	Intrusion connector	J23
Power LED	J16/pins 2 & 3	32-bit PCI slots	PC1 – PC4
Green PC connector	J16/pins 4 & 5		

USER CONFIGURABLE SETTINGS		
Function	Label	Position
í CMOS memory normal operation	JP2	Pins 2 & 3 closed
CMOS memory clear	JP2	Pins 1 & 2 closed

SIMM CONFIGURATION		
Size	Bank 0	Bank 1
8MB	(2) 1M x 36	None
16MB	(2) 2M x 36	None
16MB	(2) 1M x 36	(2) 1M x 36
24MB	(2) 2M x 36	(2) 1M x 36
32MB	(2) 4M x 36	None
32MB	(2) 2M x 36	(2) 2M x 36
40MB	(2) 4M x 36	(2) 1M x 36
48MB	(2) 4M x 36	(2) 2M x 36
64MB	(2) 8M x 36	None
64MB	(2) 4M x 36	(2) 4M x 36
72MB	(2) 8M x 36	(2) 1M x 36
80MB	(2) 8M x 36	(2) 2M x 36
96MB	(2) 8M x 36	(2) 4M x 36
128MB	(2) 8M x 36	(2) 8M x 36
128MB	(2) 16M x 36	None
136MB	(2) 16M x 36	(2) 1M x 36
144MB	(2) 16M x 36	(2) 2M x 36
160MB	(2) 16M x 36	(2) 4M x 36
192MB	(2) 16M x 36	(2) 8M x 36
256MB	(2) 16M x 36	(2) 16M x 36

Note: Board accepts EDO memory.

Continued on next page. . .

ELITEGROUP COMPUTER SYSTEMS, INC.
P5TX-BPRO

... continued from previous page

DIMM CONFIGURATION		
Size	Bank 0	Bank 1
8MB	(1) 1M x 64	None
16MB	(1) 2M x 64	None
16MB	(1) 1M x 64	(1) 1M x 64
24MB	(1) 2M x 64	(1) 1M x 64
32MB	(1) 4M x 64	None
32MB	(1) 2M x 64	(1) 2M x 64
40MB	(1) 4M x 64	(1) 1M x 64
48MB	(1) 4M x 64	(1) 2M x 64
64MB	(1) 8M x 64	None
64MB	(1) 4M x 64	(1) 4M x 64
72MB	(1) 8M x 64	(1) 1M x 64
80MB	(1) 8M x 64	(1) 2M x 64
96MB	(1) 8M x 64	(1) 4M x 64
128MB	(1) 16M x 64	None
128MB	(1) 8M x 64	(1) 8M x 64
136MB	(1) 16M x 64	(1) 1M x 64
144MB	(1) 16M x 64	(1) 2M x 64
160MB	(1) 16M x 64	(1) 4M x 64
192MB	(1) 16M x 64	(1) 8M x 64
256MB	(1) 16M x 64	(1) 16M x 64

CACHE CONFIGURATION	
Size	Bank 0
256KB	(2) 32K x 32
512KB	(2) 64K x 32

CPU SPEED SELECTION (CX 6X86/6X86L)			
CPU speed	Clock speed	Multiplier	JP1
120MHz	50MHz	2x	1 & 3, 4 & 6, 11 & 13, 19 & 21, 20 & 22
133MHz	55MHz	2x	1 & 3, 4 & 6, 11 & 13, 17 & 19, 20 & 22
150MHz	60MHz	2x	1 & 3, 4 & 6, 9 & 11, 19 & 21, 20 & 22
166MHz	66MHz	2x	1 & 3, 4 & 6, 11 & 13, 19 & 21, 18 & 20
200MHz	75MHz	2x	1 & 3, 4 & 6, 9 & 11, 17 & 19, 20 & 22

Note: Pins designated should be in the closed position.

CPU SPEED SELECTION (CX 6X86MX)			
CPU speed	Clock speed	Multiplier	JP1
166MHz	60MHz	2.5x	3 & 5, 4 & 6, 9 & 11, 19 & 21, 20 & 22
200MHz	66MHz	2.5x	3 & 5, 4 & 6, 11 & 13, 19 & 21, 18 & 20
233MHz	66MHz	3x	2 & 4, 3 & 5, 11 & 13, 19 & 21, 18 & 20
233MHz	75MHz	2.5x	3 & 5, 4 & 6, 9 & 11, 17 & 19, 20 & 22
266MHz	75MHz	3x	2 & 4, 3 & 5, 9 & 11, 17 & 19, 20 & 22

Note: Pins designated should be in the closed position.

Continued on next page...

ELITEGROUP COMPUTER SYSTEMS, INC.
P5TX-BPRO

... continued from previous page

CPU SPEED SELECTION (IBM 6X86/6X86L)			
CPU speed	Clock speed	Multiplier	JP1
120MHz	50MHz	2x	1 & 3, 4 & 6, 11 & 13, 19 & 21, 20 & 22
133MHz	55MHz	2x	1 & 3, 4 & 6, 11 & 13, 17 & 19, 20 & 22
150MHz	60MHz	2x	1 & 3, 4 & 6, 9 & 11, 19 & 21, 20 & 22
166MHz	66MHz	2x	1 & 3, 4 & 6, 11 & 13, 19 & 21, 18 & 20
200MHz	75MHz	2x	1 & 3, 4 & 6, 9 & 11, 17 & 19, 20 & 22

Note: Pins designated should be in the closed position.

CPU SPEED SELECTION (IBM 6X86MX)			
CPU speed	Clock speed	Multiplier	JP1
166MHz	60MHz	2.5x	3 & 5, 4 & 6, 9 & 11, 19 & 21, 20 & 22
200MHz	66MHz	2.5x	3 & 5, 4 & 6, 11 & 13, 19 & 21, 18 & 20
233MHz	66MHz	3x	2 & 4, 3 & 5, 11 & 13, 19 & 21, 18 & 20
233MHz	75MHz	2.5x	3 & 5, 4 & 6, 9 & 11, 17 & 19, 20 & 22
266MHz	75MHz	3x	2 & 4, 3 & 5, 9 & 11, 17 & 19, 20 & 22

Note: Pins designated should be in the closed position.

CPU SPEED SELECTION (AM K5)			
CPU speed	Clock speed	Multiplier	JP1
75MHz	50MHz	1.5x	1 & 3, 2 & 4, 11 & 13, 19 & 21, 20 & 22
90MHz	60MHz	1.5x	1 & 3, 2 & 4, 9 & 11, 19 & 21, 20 & 22
100MHz	66MHz	1.5x	1 & 3, 2 & 4, 11 & 13, 19 & 21, 18 & 20
120MHz	60MHz	1.5x	1 & 3, 2 & 4, 9 & 11, 19 & 21, 20 & 22
133MHz	66MHz	1.5x	1 & 3, 2 & 4, 11 & 13, 19 & 21, 18 & 20
150MHz	60MHz	2x	1 & 3, 4 & 6, 9 & 11, 19 & 21, 20 & 22
166MHz	66MHz	2x	1 & 3, 4 & 6, 11 & 13, 19 & 21, 18 & 20

Note: Pins designated should be in the closed position.

CPU SPEED SELECTION (AM K6)			
CPU speed	Clock speed	Multiplier	JP1
166MHz	66MHz	2.5x	3 & 5, 4 & 6, 11 & 13, 19 & 21, 18 & 20
200MHz	66MHz	3x	2 & 4, 3 & 5, 11 & 13, 19 & 21, 18 & 20
233MHz	66MHz	3.5x	1 & 3, 2 & 4, 11 & 13, 19 & 21, 18 & 20

Note: Pins designated should be in the closed position.

Continued on next page...

ELITEGROUP COMPUTER SYSTEMS, INC.
P5TX-BPRO

... continued from previous page

CPU SPEED SELECTION (INTEL)			
CPU speed	Clock speed	Multiplier	JP1
75MHz	50MHz	1.5x	1 & 3, 2 & 4, 11 & 13, 19 & 21, 20 & 22
90MHz	60MHz	1.5x	1 & 3, 2 & 4, 9 & 11, 19 & 21, 20 & 22
100MHz	66MHz	1.5x	1 & 3, 2 & 4, 11 & 13, 19 & 21, 18 & 20
120MHz	60MHz	2x	1 & 3, 4 & 6, 9 & 11, 19 & 21, 20 & 22
133MHz	66MHz	2x	1 & 3, 4 & 6, 11 & 13, 19 & 21, 18 & 20
150MHz	60MHz	2.5x	3 & 5, 4 & 6, 9 & 11, 19 & 21, 20 & 22
166MHz	66MHz	2.5x	3 & 5, 4 & 6, 11 & 13, 19 & 21, 18 & 20
200MHz	66MHz	3x	2 & 4, 3 & 5, 11 & 13, 19 & 21, 18 & 20
233MHz	66MHz	3.5x	1 & 3, 2 & 4, 11 & 13, 19 & 21, 18 & 20

Note: Pins designated should be in the closed position.

CPU VOLTAGE SELECTION	
Voltage	JP4
2.5v	Pins 11 & 12 closed
2.8v	Pins 9 & 10 closed
2.9v	Pins 7 & 8 closed
3.2v	Pins 3 & 4 closed
3.52v	Pins 1 & 2 closed