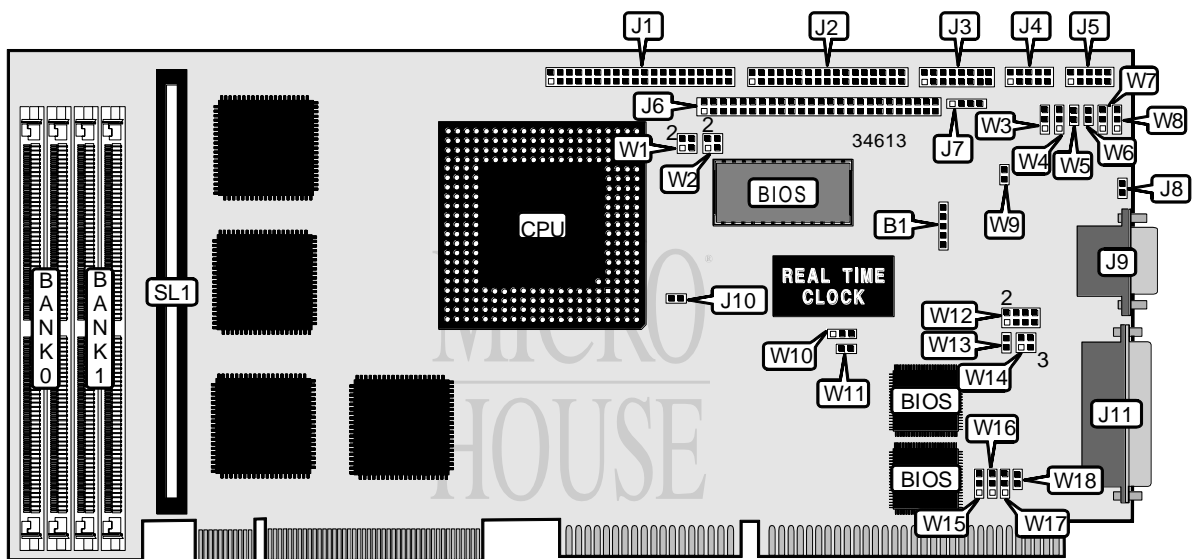


# TEKNOR INDUSTRIAL COMPUTERS, INC.

## TEK 932

<b>Processor</b>	Pentium
<b>Processor Speed</b>	75/100MHz
<b>Chip Set</b>	Intel
<b>Video Chip Set</b>	Unidentified
<b>Maximum Onboard Memory</b>	128MB
<b>Maximum Video Memory</b>	Unidentified
<b>Cache</b>	256/512KB
<b>BIOS</b>	AMI
<b>Dimensions</b>	Unidentified
<b>I/O Options</b>	Floppy drive interface, IDE interface, PS/2 mouse interface, parallel port, serial ports (2), VGA port, cache slot, flat panel connector
<b>NPU Options</b>	None



CONNECTIONS			
Purpose	Location	Purpose	Location
External battery	B1	Flat panel connector	J6
IDE interface	J1	PS/2 mouse interface	J7
Floppy drive interface	J2	VGA port	J9
Keyboard, speaker, reset, LED	J3	Chassis fan power	J10
Serial port 1	J4	Parallel port	J11
Serial port 2	J5	Cache slot	SL1

Continued on next page. . .

TEKNOR INDUSTRIAL COMPUTERS, INC.  
TEK 932

... continued from previous page

USER CONFIGURABLE SETTINGS		
Function	Label	Position
í BIOS boot select normal boot	J8	Open
BIOS boot select emergency boot	J8	Closed
í Internal battery disabled	W9	Open
Internal battery enabled	W9	Closed
í Pixel clock polarity positive	W10	Pins 1 & 2 closed
Pixel clock polarity negative	W10	Pins 2 & 3 closed
í PS/2 mouse IRQ12 disabled	W11	Open
PS/2 mouse IRQ12 enabled	W11	Closed
í Power fail monitoring disabled	W13	Open
Power fail monitoring enabled	W13	Closed
í IOCHRDY signal to IDE interface disabled	W18	Open
IOCHRDY signal to IDE interface enabled	W18	Closed

SIMM CONFIGURATION		
Size	Bank 0	Bank 1
2MB	(2) 256K x 36	None
4MB	(2) 512K x 36	None
4MB	(2) 256K x 36	(2) 256K x 36
6MB	(2) 512K x 36	(2) 256K x 36
8MB	(2) 1M x 36	None
8MB	(2) 512K x 36	(2) 512K x 36
10MB	(2) 1M x 36	(2) 256K x 36
12MB	(2) 512K x 36	(2) 1M x 36
16MB	(2) 2M x 36	None
16MB	(2) 1M x 36	(2) 1M x 36
18MB	(2) 2M x 36	(2) 256K x 36
20MB	(2) 512K x 36	(2) 2M x 36
24MB	(2) 2M x 36	(2) 1M x 36
32MB	(2) 4M x 36	None
32MB	(2) 2M x 36	(2) 2M x 36
34MB	(2) 4M x 36	(2) 256K x 36
36MB	(2) 512K x 36	(2) 4M x 36
40MB	(2) 4M x 36	(2) 1M x 36
48MB	(2) 2M x 36	(2) 4M x 36
64MB	(2) 8M x 36	None
66MB	(2) 256K x 36	(2) 8M x 36
68MB	(2) 8M x 36	(2) 512K x 36
72MB	(2) 1M x 36	(2) 8M x 36
80MB	(2) 8M x 36	(2) 2M x 36
96MB	(2) 4M x 36	(2) 8M x 36
128MB	(2) 8M x 36	(2) 8M x 36

Continued on next page. . .

TEKNOR INDUSTRIAL COMPUTERS, INC.  
TEK 932

... continued from previous page

CACHE CONFIGURATION	
Size	SL1
256KB	256KB module installed
512KB	512KB module installed

VIDEO MEMORY CONFIGURATION
Note: The size of the video memory is unidentified.

DMA CHANNEL SELECTION		
Channel	W16	W17
1	Pins 1 & 2 closed	Pins 1 & 2 closed
3	Pins 2 & 3 closed	Pins 2 & 3 closed
í None	Open	Open

PARALLEL PORT INTERRUPT SELECTION	
IRQ	W15
IRQ5	Pins 1 & 2 closed
í IRQ7	Pins 2 & 3 closed
None	Open

SERIAL PORT 2 LOOPBACK SELECTION		
Setting	W5	W6
í Normal	Open	Open
Loopback	Closed	Closed

SERIAL PORT 2 SELECTION				
Setting	W3	W4	W7	W8
í RS-232	Pins 1 & 2 closed	Pins 1 & 2 closed	Pins 1 & 2 closed	Pins 1 & 2 closed
RS-485	Pins 2 & 3 closed	Pins 2 & 3 closed	Pins 2 & 3 closed	Pins 2 & 3 closed

FLOPPY DRIVE EDOUT SELECTION	
Setting	W1
í Left to software	Open
Ground to pin 17 on J2	Pins 2 & 4 closed
Ground to pin 29 on J2	Pins 3 & 4 closed
EDOUT to pin 29 on J2	Pins 1 & 3 closed
EDOUT to pin 17 on J2	Pins 1 & 2 closed

Continued on next page...

... continued from previous page

FLOPPY DRIVE HDOUT SELECTION	
Setting	W2
í Left to software	Open
Ground to pin 27 on J2	Pins 2 & 4 closed
Ground to pin 33 on J2	Pins 3 & 4 closed
HDOUT to pin 33 on J2	Pins 1 & 3 closed
HDOUT to pin 27 on J2	Pins 1 & 2 closed

BASE I/O SELECTION	
Address	W14
í 190H	Pins 1 & 2, 3 & 4 closed
290H	Pins 1 & 2 closed
390H	Pins 3 & 4 closed
390H	Open

EXTENDED BIOS MODE SELECTION	
Setting	W12
VT100	Pins 3 & 4 closed
Serial download	Pins 1 & 2 closed
í Standard mode	Pins 3 & 4 closed
í Normal mode	Pins 1 & 2 closed