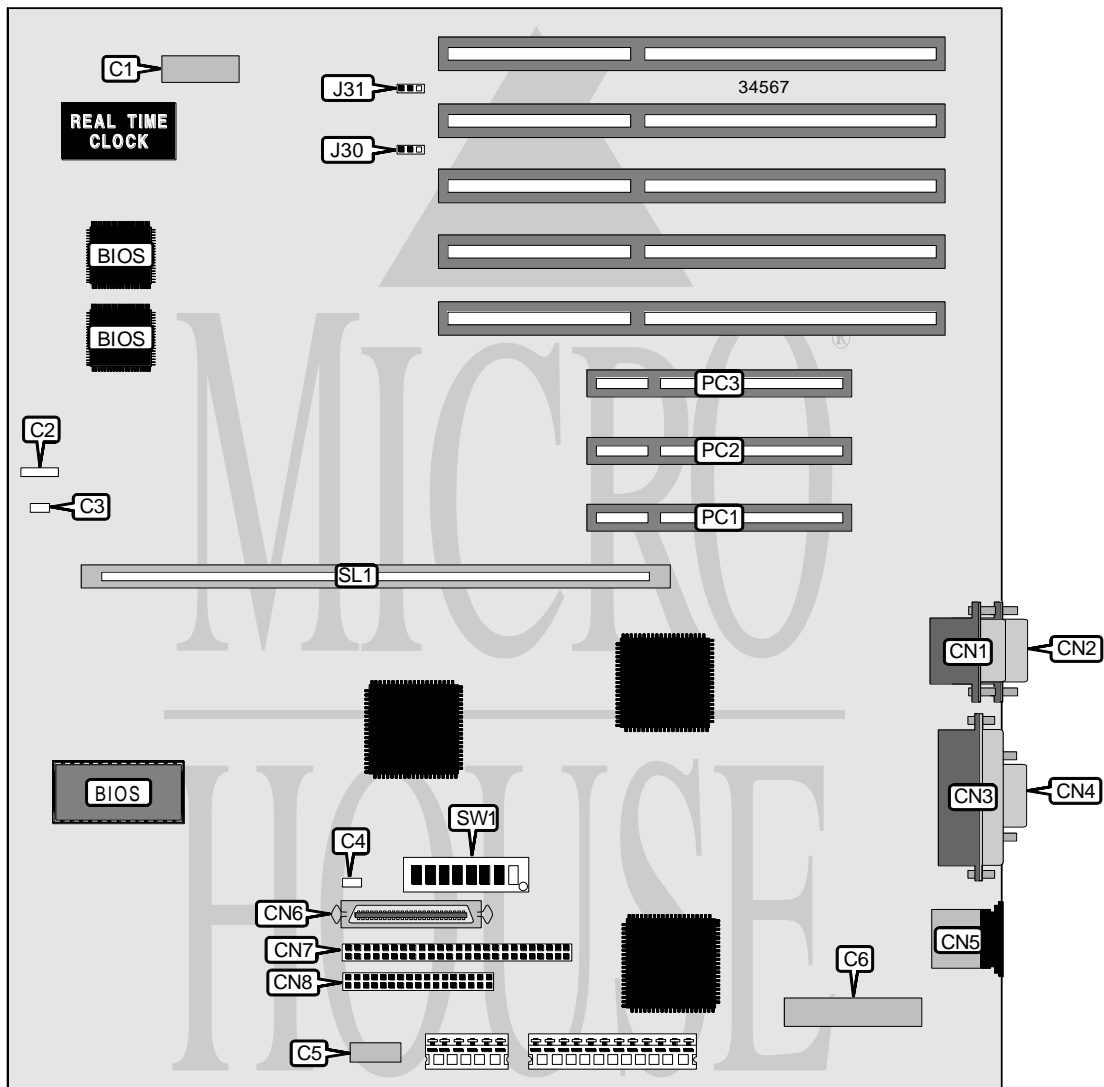


# DIGITAL EQUIPMENT CORPORATION PRIORIS MX 6200

<b>Processor</b>	Pentium Pro
<b>Processor Speed</b>	200MHz
<b>Chip Set</b>	Unidentified
<b>Video Chip Set</b>	Unidentified
<b>Maximum Onboard Memory</b>	1GB (EDO supported)
<b>Maximum Video Memory</b>	Unidentified
<b>Cache</b>	256/512KB (located on Pentium Pro CPU)
<b>BIOS</b>	Unidentified
<b>Dimensions</b>	355mm x 304mm
<b>I/O Options (Backplane)</b>	32-bit PCI slots (3), floppy drive interface, SCSI interface, Ultra Wide SCSI interface, parallel port, PS/2 mouse port, serial ports (2), VGA port, CPU card slot, Ethernet connector
<b>I/O Options (CPU)</b>	VRM connectors (2)
<b>NPU Options</b>	None



*Continued on next page. . .*

DIGITAL EQUIPMENT CORPORATION  
PRIORIS MX 6200

... continued from previous page

CONNECTIONS			
Purpose	Location	Purpose	Location
Serial port	CN1	RSM connector	C1
Serial port	CN2	Speaker	C2
Parallel port	CN3	Chassis fan power	C3
VGA port	CN4	Chassis fan power	C4
PS/2 mouse port	CN5	Front panel connector	C5
Ultra Wide SCSI interface	CN6	Ethernet connector	C6
SCSI interface	CN7	32-bit PCI slots	PC1 – PC3
Floppy drive interface	CN8	CPU slot	SL1

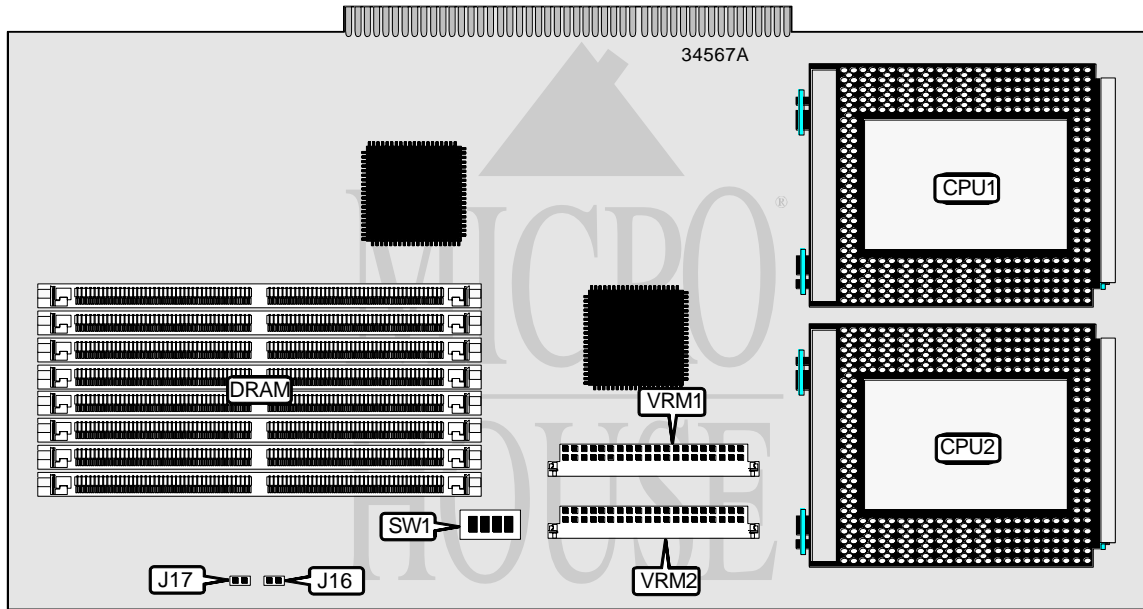
USER CONFIGURABLE SETTINGS			
Function	Label	Position	
í EISA slot 4 master delay select normal	J30	Pins 1 & 2 closed	
EISA slot 4 master delay select delay 1 clock cycle	J30	Pins 2 & 3 closed	
í EISA slot 5 master delay select normal	J31	Pins 1 & 2 closed	
EISA slot 5 master delay select delay 1 clock cycle	J31	Pins 2 & 3 closed	
í BIOS upgrade disabled	SW1/1	Off	
BIOS upgrade enabled	SW1/1	On	
í Flash BIOS normal operation	SW1/2	Off	
Flash BIOS recovery mode	SW1/2	On	
í Boot block disabled	SW1/3	Off	
Boot block enabled	SW1/3	On	
í Password normal operation	SW1/4	Off	
Password clear	SW1/4	On	
í RSM not installed	SW1/5	On	
RSM installed	SW1/5	Off	
í NVRAM memory normal operation	SW1/6	Off	
NVRAM memory clear	SW1/6	On	
í Factory configured - do not alter	SW1/7	Off	
í Factory configured - do not alter	SW1/8	Off	

Continued on next page. . .

DIGITAL EQUIPMENT CORPORATION  
 PRIORIS MX 6200

... continued from previous page

**VIDEO MEMORY CONFIGURATION**  
 Note: The location and size of the video memory is unidentified.



CPU CARD

**CONNECTIONS**

Purpose	Location	Purpose	Location
VRM connector	VRM1	VRM connector	VRM2

**USER CONFIGURABLE SETTINGS**

Function	Label	Position
í Factory configured - do not alter	J16	Open
í Factory configured - do not alter	J17	Open

**SIMM CONFIGURATION**

Size	Bank 0	Bank 1	Bank 2	Bank 3
32MB	(2) 4M x 36	None	None	None
64MB	(2) 4M x 36	(2) 4M x 36	None	None
64MB	(2) 8M x 36	None	None	None
96MB	(2) 4M x 36	(2) 4M x 36	(2) 4M x 36	None
128MB	(2) 4M x 36	(2) 4M x 36	(2) 4M x 36	(2) 4M x 36

Continued on next page...

DIGITAL EQUIPMENT CORPORATION  
 PRIORIS MX 6200

... continued from previous page

SIMM CONFIGURATION (CON'T)				
Size	Bank 0	Bank 1	Bank 2	Bank 3
128MB	(2) 8M x 36	(2) 8M x 36	None	None
128MB	(2) 16M x 36	None	None	None
192MB	(2) 8M x 36	(2) 8M x 36	(2) 8M x 36	None
256MB	(2) 8M x 36	(2) 8M x 36	(2) 8M x 36	(2) 8M x 36
256MB	(2) 16M x 36	(2) 16M x 36	None	None
256MB	(2) 32M x 36	None	None	None
384MB	(2) 16M x 36	(2) 16M x 36	(2) 16M x 36	None
512MB	(2) 16M x 36	(2) 16M x 36	(2) 16M x 36	(2) 16M x 36
512MB	(2) 32M x 36	(2) 32M x 36	None	None
768MB	(2) 32M x 36	(2) 32M x 36	(2) 32M x 36	None
1GB	(2) 32M x 36	(2) 32M x 36	(2) 32M x 36	(2) 32M x 36

Note: Board accepts EDO memory.

CACHE CONFIGURATION
Note: 256KB/512KB cache is located on the Pentium Pro CPU.

CPU SPEED SELECTION						
CPU speed	Clock speed	Multiplier	SW1/1	SW1/2	SW1/3	SW1/4
200MHz	66MHz	3x	On	On	Off	On