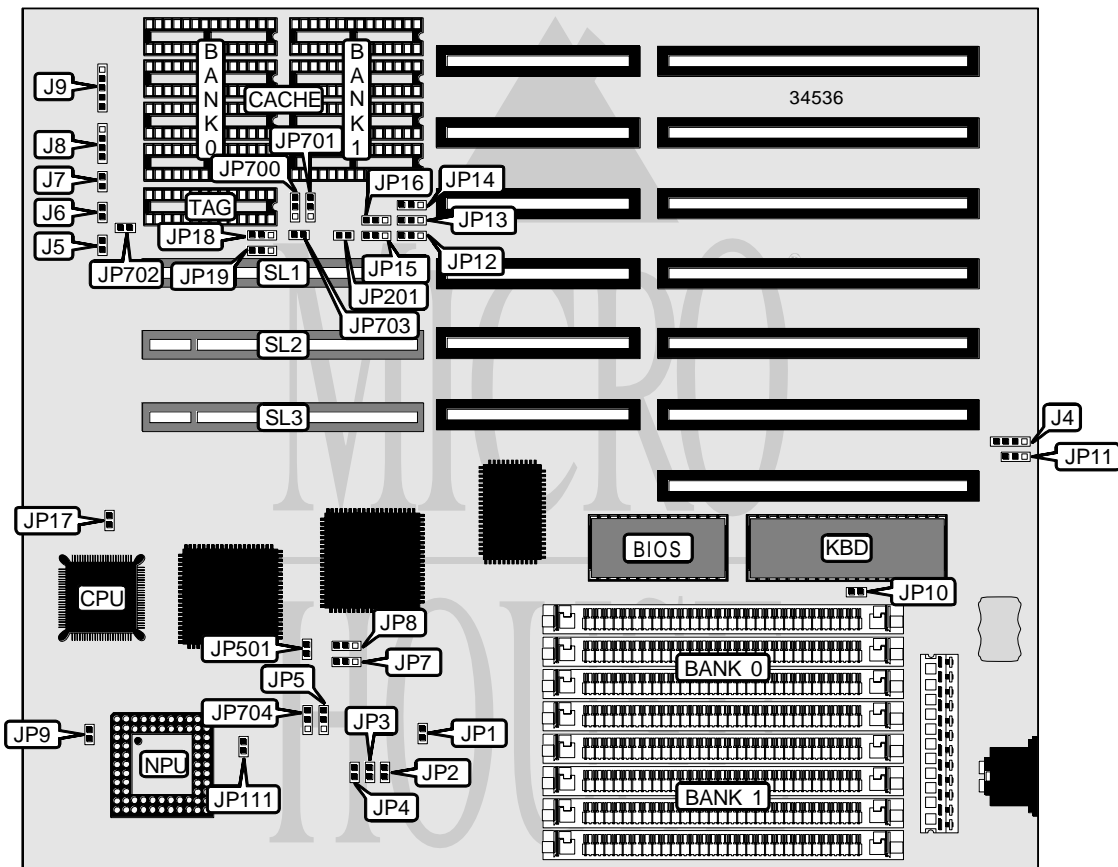


# IBM CORPORATION 486SLC2 VESA

<b>Processor</b>	486SLC2
<b>Processor Speed</b>	50(internal)/66(internal)MHz
<b>Chip Set</b>	Unidentified
<b>Video Chip Set</b>	None
<b>Maximum Onboard Memory</b>	16MB
<b>Maximum Video Memory</b>	None
<b>Cache</b>	64/128/256KB
<b>BIOS</b>	Award
<b>Dimensions</b>	254mm x 218mm
<b>I/O Options</b>	32-bit VESA local bus slots (3)
<b>NPU Options</b>	80387SX



CONNECTIONS			
Purpose	Location	Purpose	Location
External battery	J4	Speaker	J8
Turbo LED	J5	Power LED & keylock	J9
Turbo switch	J6	Chassis fan power	JP9
Reset switch	J7	32-bit VESA local bus slots	SL1 – SL3

Continued on next page . . .

IBM CORPORATION  
486SLC2 VESA

... continued from previous page

USER CONFIGURABLE SETTINGS		
Function	Label	Position
í Monitor type select color/EGA/VGA	JP10	Closed
Monitor type select monochrome	JP10	Open
Battery type select internal	JP11	Pins 2 & 3 closed
Battery type select external	JP11	Pins 1 & 2 closed
í CPU memory read/write delay enabled	JP700	Pins 1 & 2 closed
CPU memory read/write delay disabled	JP700	Pins 2 & 3 closed

SIMM CONFIGURATION		
Size	Bank 0	Bank 1
1MB	(4) 256K x 9	None
2MB	(4) 256K x 9	(4) 256K x 9
4MB	(4) 1M x 9	None
8MB	(4) 1M x 9	(4) 1M x 9
16MB	(4) 4M x 9	None

CACHE CONFIGURATION			
Size	Bank 0	Bank 1	TAG
64KB	(4) 8K x 8	(4) 8K x 8	(1) 8K x 8
128KB	(4) 32K x 8	None	(1) 32K x 8
256KB	(4) 32K x 8	(4) 32K x 8	(1) 32K x 8

CACHE JUMPER CONFIGURATION					
Size	JP12	JP13	JP14	JP15	JP16
64KB	2 & 3	2 & 3	2 & 3	2 & 3	2 & 3
128KB	1 & 2	1 & 2	1 & 2	1 & 2	1 & 2
256KB	2 & 3	2 & 3	2 & 3	2 & 3	2 & 3

Note: Pins designated should be in the closed position.

CACHE JUMPER CONFIGURATION (CON'T)				
Size	JP11	JP17	JP702	JP703
64KB	Open	Open	Open	Open
128KB	Closed	Open	Closed	Closed
256KB	Open	Closed	Closed	Closed

CPU SPEED SELECTION						
Speed	JP1	JP2	JP3	JP4	JP5	JP704
50iMHz	Closed	Open	Open	Closed	2 & 3	1 & 2
66iMHz	Closed	Closed	Open	Open	2 & 3	1 & 2

Note: Pins designated should be in the closed position.

Continued on next page...

IBM CORPORATION  
486SLC2 VESA

... continued from previous page

CPU ADS DELAY SELECTION		
Setting	JP201	JP701
í Enabled	Closed	Pins 1 & 2 closed
Disabled	Open	Pins 2 & 3 closed

VL BUS WAIT STATE SELECTION	
Setting	JP18
í 0	Pins 1 & 2 closed
1	Pins 2 & 3 closed

VL BUS SPEED SELECTION	
Speed	JP19
<= 33MHz	Pins 1 & 2 closed
>33 MHz	Pins 2 & 3 closed

LOCAL BUS CLOCK DELAY SELECTION		
Setting	JP7	JP8
í No delay	Pins 1 & 2 closed	Pins 1 & 2 closed
One gate delay	Pins 2 & 3 closed	Pins 2 & 3 closed