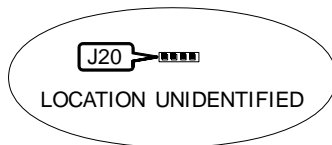
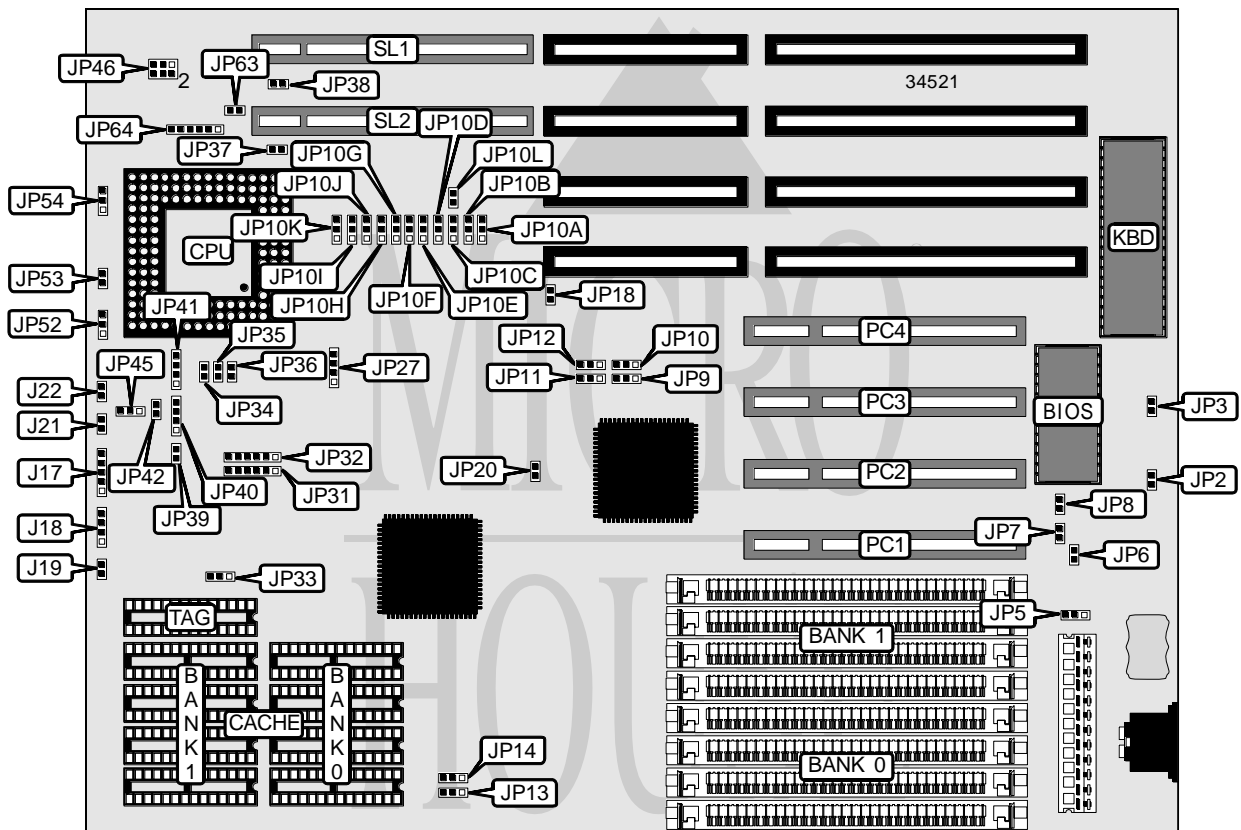


SOYO COMPUTER CO., LTD.
SY-30 A/B/C

Processor	CX486S/AM486SX/80486SX/SL80486SX/CX486DX/AM486DX/ 80486DX/SL80486DX/AM486DX2/80486DX2/SL80486DX2/ 80486DX4/P24D/P24T
Processor Speed	25/33/40/50(internal)/50/66(internal)MHz
Chip Set	Unidentified
Video Chip Set	None
Maximum Onboard Memory	128MB
Maximum Video Memory	None
Cache	256/512/1024KB
BIOS	Award
Dimensions	254mm x 218mm
I/O Options	32-bit VESA local bus slots (2), 32-bit PCI slots (4), green PC connector
NPU Options	None



Continued on next page . . .

SOYO COMPUTER CO., LTD.
SY-30 A/B/C

... continued from previous page

CONNECTIONS			
Purpose	Location	Purpose	Location
Power LED & keylock	J17	Green PC connector (SYNCEN)	JP6
Speaker	J18	Green PC connector (HSYNCH)	JP7
Reset switch	J19	Green PC connector(VSYNCH)	JP8
External battery	J20	Green PC LED	JP18
Turbo switch	J21	Green PC connector	JP42
Turbo LED	J22	32-bit PCI slots	PC1 – PC4
Green PC connector (GPORT)	JP2	32-bit VESA local bus slots	SL1 & SL2

USER CONFIGURABLE SETTINGS		
Function	Label	Position
1 Monitor type select monochrome	JP3	Open
Monitor type select EGA/VGA	JP3	Closed
1 CMOS memory normal operation	JP5	Pins 1 & 2 closed
CMOS memory clear	JP5	Pins 2 & 3 closed

SIMM CONFIGURATION		
Size	Bank 0	Bank 1
1MB	(4) 256K x 9	None
2MB	(4) 256K x 9	(4) 256K x 9
4MB	(4) 1M x 9	None
5MB	(4) 1M x 9	(4) 256K x 9
8MB	(4) 1M x 9	(4) 1M x 9
16MB	(4) 4M x 9	None
17MB	(4) 256K x 9	(4) 4M x 9
20MB	(4) 1M x 9	(4) 4M x 9
32MB	(4) 4M x 9	(4) 4M x 9
64MB	(4) 16M x 9	None
80MB	(4) 4M x 9	(4) 16M x 9
128MB	(4) 16M x 9	(4) 16M x 9

CACHE CONFIGURATION			
Size	Bank 0	Bank 1	TAG
256KB (A)	(4) 32K x 8	(4) 32K x 8	(1) 32K x 8
256KB (B)	(4) 64K x 8	None	(1) 32K x 8
512KB (A)	(4) 128K x 8	None	(1) 32K x 8
512KB (B)	(4) 64K x 8	(4) 64K x 8	(1) 32K x 8
1MB	(4) 128K x 8	(4) 128K x 8	(1) 128K x 8

Continued on next page. . .

SOYO COMPUTER CO., LTD.
SY-30 A/B/C

... continued from previous page

CACHE JUMPER CONFIGURATION			
Size	JP13	JP14	JP33
256KB (A)	Pins 1 & 2 closed	Any setting	Pins 1 & 2 closed
256KB (B)	Pins 2 & 3 closed	Any setting	Pins 1 & 2 closed
512KB (A)	Pins 2 & 3 closed	Any setting	Pins 2 & 3 closed
512KB (B)	Any setting	Pins 1 & 2 closed	Pins 2 & 3 closed
1MB	Any setting	Pins 2 & 3 closed	Pins 2 & 3 closed

CPU SPEED SELECTION				
Speed	JP34	JP35	JP36	JP39
25MHz	Closed	Open	Open	Closed
33MHz	Closed	Closed	Closed	Open
40MHz	Closed	Closed	Open	Open
50iMHz	Closed	Open	Open	Closed
50MHz	Open	Open	Closed	Open
66iMHz	Closed	Closed	Closed	Open
75iMHz	Closed	Open	Open	Closed
100iMHz	Closed	Closed	Closed	Open

CPU TYPE SELECTION					
Type	JP31	JP32	JP40	JP41	JP45
CX486S	4 & 5	5 & 6	2 & 3	2 & 3	2 & 3
AM486SX	Open	Open	Open	2 & 3	1 & 2
80486SX	Open	Open	Open	2 & 3	1 & 2
SL80486SX	3 & 4, 5 & 6	Open	1 & 2	2 & 3	2 & 3
CX486DX	4 & 5	5 & 6	2 & 3	1 & 2, 3 & 4	2 & 3
AM486DX	Open	Open	Open	1 & 2, 3 & 4	1 & 2
80486DX	Open	Open	Open	1 & 2, 3 & 4	1 & 2
SL80486DX	3 & 4, 5 & 6	Open	1 & 2	1 & 2, 3 & 4	2 & 3
AM486DX2	Open	Open	Open	1 & 2, 3 & 4	1 & 2
80486DX2	Open	Open	Open	1 & 2, 3 & 4	1 & 2
SL80486DX2	3 & 4, 5 & 6	Open	1 & 2	1 & 2, 3 & 4	2 & 3
80486DX4	3 & 4, 5 & 6	Open	1 & 2	1 & 2, 3 & 4	2 & 3
P24D	3 & 4, 5 & 6	2 & 3, 4 & 5	1 & 2, 3 & 4	1 & 2, 3 & 4	2 & 3
P24T	5 & 6	3 & 4	1 & 2	1 & 2, 3 & 4	2 & 3

Note: Pins designated should be in the closed position.

Continued on next page. . .

SOYO COMPUTER CO., LTD.
SY-30 A/B/C

... continued from previous page

CPU TYPE SELECTION (CON'T)					
Type	JP46	JP52	JP53	JP54	JP63
CX486S	1 & 3, 2 & 4	Open	Closed	1 & 2	Closed
AM486SX	1 & 3, 2 & 4	Open	Open	Open	Open
80486SX	1 & 3, 2 & 4	Open	Open	Open	Open
SL80486SX	1 & 3, 2 & 4	Open	Open	Open	Open
CX486DX	1 & 3, 2 & 4	2 & 3	Open	1 & 2	Closed
AM486DX	1 & 3, 2 & 4	2 & 3	Open	Open	Open
80486DX	1 & 3, 2 & 4	2 & 3	Open	Open	Open
SL80486DX	1 & 3, 2 & 4	2 & 3	Open	Open	Open
AM486DX2	1 & 3, 2 & 4	2 & 3	Open	Open	Open
80486DX2	1 & 3, 2 & 4	2 & 3	Open	Open	Open
SL80486DX2	1 & 3, 2 & 4	2 & 3	Open	Open	Open
80486DX4	3 & 5, 4 & 6	2 & 3	Open	Open	Open
P24D	1 & 3, 2 & 4	2 & 3	Open	2 & 3	Open
P24T	1 & 3, 2 & 4	1 & 2	Open	1 & 2	Open

Note: Pins designated should be in the closed position.

CPU MULTIPLIER SELECTION (80486DX4 ONLY)	
Multiplier	JP64
2x	Pins 2 & 3 closed
2.5x	Pins 4 & 5 closed
3x	Pins 1 & 2 closed

WAIT STATE SELECTION	
Setting	JP38
0	Open
1	Closed

VL-BUS SPEED SELECTION	
Setting	JP37
<= 33MHz	Open
>33 MHz	Closed

PCI BUS CLOCK SELECTION		
Setting	JP20	JP27
ASYNCH	Closed	Pins 2 & 3 closed
SYNCH	Open	Pins 1 & 2 closed

Continued on next page...

SOYO COMPUTER CO., LTD.
SY-30 A/B/C

... continued from previous page

PCI TRIGGER SELECTION				
Setting	JP9 (PC3)	JP10 (PC4)	JP11 (PC1)	JP12 (PC2)
Level	Pins 1 & 2 closed	Pins 1 & 2 closed	Pins 1 & 2 closed	Pins 1 & 2 closed
Edge	Pins 2 & 3 closed	Pins 2 & 3 closed	Pins 2 & 3 closed	Pins 2 & 3 closed

PCI INTERRUPT SELECTION (IRQ14 FOR PC1)		
Setting	JP10B	JP10L
Level	Pins 1 & 2 closed	N/A
Edge	N/A	Closed

PCI INTERRUPT SELECTION (PCI 2, 3, 4)						
IRQ	Setting	JP10A	JP10B	JP10C	JP10D	JP10E
3	Level	Open	Open	Open	Open	Open
3	Edge	Open	Open	Open	Open	Open
4	Level	Open	Open	Open	Open	Open
4	Edge	Open	Open	Open	Open	Open
5	Level	Open	Open	Open	Open	Open
5	Edge	Open	Open	Open	Open	Open
6	Level	Open	Open	Open	Open	Open
6	Edge	Open	Open	Open	Open	Open
7	Level	Open	Open	Open	Open	Open
7	Edge	Open	Open	Open	Open	Open
9	Level	Open	Open	Open	Open	Open
9	Edge	Open	Open	Open	Open	Open
10	Level	Open	Open	Open	Open	1 & 2
10	Edge	Open	Open	Open	Open	2 & 3
11	Level	Open	Open	Open	1 & 2	Open
11	Edge	Open	Open	Open	2 & 3	Open
12	Level	Open	Open	1 & 2	Open	Open
12	Edge	Open	Open	2 & 3	Open	Open
14	Level	Open	1 & 2	Open	Open	Open
14	Edge	Open	2 & 3	Open	Open	Open
15	Level	1 & 2	Open	Open	Open	Open
15	Edge	2 & 3	Open	Open	Open	Open

Note: Pins designated should be in the closed position.

Continued on next page. . .

SOYO COMPUTER CO., LTD.
SY-30 A/B/C

... continued from previous page

PCI INTERRUPT SELECTION (PCI 2, 3, 4)							
IRQ	Setting	JP10F	JP10G	JP10H	JP10I	JP10J	JP10K
3	Level	Open	Open	Open	Open	Open	1 & 2
3	Edge	Open	Open	Open	Open	Open	2 & 3
4	Level	Open	Open	Open	Open	1 & 2	Open
4	Edge	Open	Open	Open	Open	2 & 3	Open
5	Level	Open	Open	Open	1 & 2	Open	Open
5	Edge	Open	Open	Open	2 & 3	Open	Open
6	Level	Open	Open	1 & 2	Open	Open	Open
6	Edge	Open	Open	2 & 3	Open	Open	Open
7	Level	Open	1 & 2	Open	Open	Open	Open
7	Edge	Open	2 & 3	Open	Open	Open	Open
9	Level	1 & 2	Open	Open	Open	Open	Open
9	Edge	2 & 3	Open	Open	Open	Open	Open
10	Level	Open	Open	Open	Open	Open	Open
10	Edge	Open	Open	Open	Open	Open	Open
11	Level	Open	Open	Open	Open	Open	Open
11	Edge	Open	Open	Open	Open	Open	Open
12	Level	Open	Open	Open	Open	Open	Open
12	Edge	Open	Open	Open	Open	Open	Open
14	Level	Open	Open	Open	Open	Open	Open
14	Edge	Open	Open	Open	Open	Open	Open
15	Level	Open	Open	Open	Open	Open	Open
15	Edge	Open	Open	Open	Open	Open	Open

Note: Pins designated should be in the closed position.