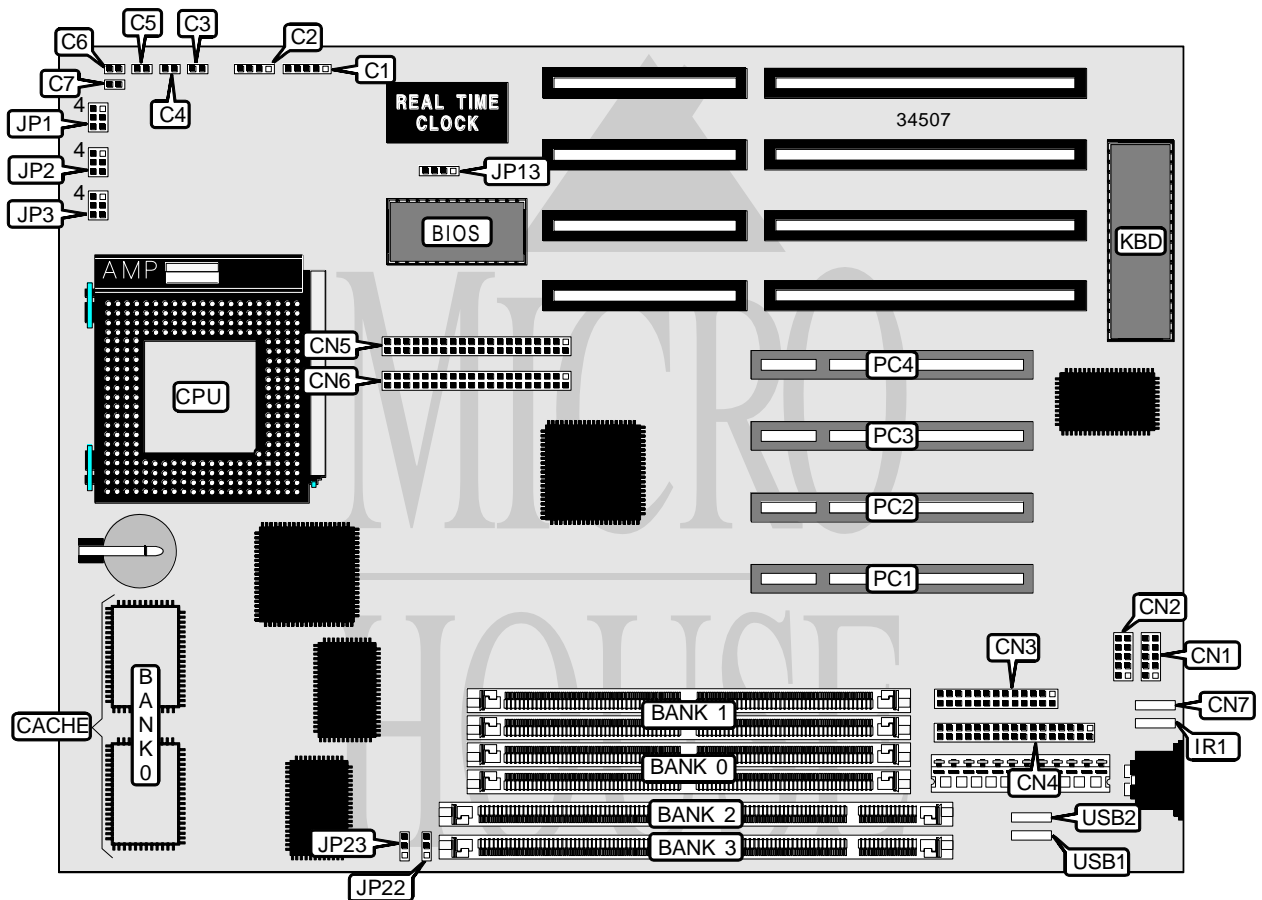


J-BOND COMPUTER SYSTEMS CORPORATION

PCI500C-H4

| | |
|-------------------------------|---|
| Processor | CX 6X86/IBM 6X86/AM K5/AM K6/Pentium |
| Processor Speed | 90/100/120/133/150/166/180/200/233MHz |
| Chip Set | Intel |
| Video Chip Set | None |
| Maximum Onboard Memory | 128MB |
| Maximum Video Memory | None |
| Cache | 256/512KB |
| BIOS | Award |
| Dimensions | 330mm x 218mm |
| I/O Options | 32-bit PCI slots (4), floppy drive interface, green PC connector, IDE interfaces (2), parallel port, PS/2 mouse interface, serial ports (2), IR connector, USB connectors (2) |
| NPU Options | None |



Continued on next page...

J-BOND COMPUTER SYSTEMS CORPORATION
 PCI500C - H4

... continued from previous page

| CONNECTIONS | | | |
|---------------------|----------|------------------------|-----------|
| Purpose | Location | Purpose | Location |
| Power LED & keylock | C1 | Parallel port | CN3 |
| Speaker | C2 | Floppy drive interface | CN4 |
| Turbo LED | C3 | IDE interface 1 | CN5 |
| IDE interface LED | C4 | IDE interface 2 | CN6 |
| Turbo switch | C5 | PS/2 mouse interface | CN7 |
| Reset switch | C6 | IR connector | IR1 |
| Green PC connector | C7 | 32-bit PCI slots | PC1 – PC4 |
| Serial port 1 | CN1 | USB connector 2 | USB2 |
| Serial port 2 | CN2 | USB connector 1 | USB1 |

| USER CONFIGURABLE SETTINGS | | |
|------------------------------|-------|-------------------|
| Function | Label | Position |
| CMOS memory normal operation | JP13 | Pins 1 & 2 closed |
| CMOS memory clear | JP13 | Pins 3 & 4 closed |

| SIMM CONFIGURATION | | |
|--------------------|-------------|-------------|
| Size | Bank 0 | Bank 1 |
| 8MB | (2) 1M x 36 | None |
| 16MB | (2) 2M x 36 | None |
| 16MB | (2) 1M x 36 | (2) 1M x 36 |
| 24MB | (2) 2M x 36 | (2) 1M x 36 |
| 32MB | (2) 4M x 36 | None |
| 32MB | (2) 2M x 36 | (2) 2M x 36 |
| 40MB | (2) 4M x 36 | (2) 1M x 36 |
| 48MB | (2) 4M x 36 | (2) 2M x 36 |
| 64MB | (2) 8M x 36 | None |
| 64MB | (2) 4M x 36 | (2) 4M x 36 |
| 72MB | (2) 8M x 36 | (2) 1M x 36 |
| 80MB | (2) 8M x 36 | (2) 2M x 36 |
| 96MB | (2) 8M x 36 | (2) 4M x 36 |
| 128MB | (2) 8M x 36 | (2) 8M x 36 |

Continued on next page. . .

J-BOND COMPUTER SYSTEMS CORPORATION
 PCI500C - H4

... continued from previous page

| DIMM CONFIGURATION | | |
|--------------------|-------------|-------------|
| Size | Bank 0 | Bank 1 |
| 8MB | (1) 1M x 64 | None |
| 16MB | (1) 2M x 64 | None |
| 16MB | (1) 1M x 64 | (1) 1M x 64 |
| 24MB | (1) 2M x 64 | (1) 1M x 64 |
| 32MB | (1) 4M x 64 | None |
| 32MB | (1) 2M x 64 | (1) 2M x 64 |
| 40MB | (1) 4M x 64 | (1) 1M x 64 |
| 48MB | (1) 4M x 64 | (1) 2M x 64 |
| 64MB | (1) 8M x 64 | None |
| 64MB | (1) 4M x 64 | (1) 4M x 64 |
| 72MB | (1) 8M x 64 | (1) 1M x 64 |
| 80MB | (1) 8M x 64 | (1) 2M x 64 |
| 96MB | (1) 8M x 64 | (1) 4M x 64 |
| 128MB | (1) 8M x 64 | (1) 8M x 64 |

| DIMM VOLTAGE CONFIGURATION | | |
|----------------------------|-------------------|-------------------|
| Voltage | JP22 | JP23 |
| 3.3v | Pins 1 & 2 closed | Pins 1 & 2 closed |
| 5v | Pins 2 & 3 closed | Pins 2 & 3 closed |

| CACHE CONFIGURATION | |
|---------------------|--------------|
| Size | Bank 0 |
| 256KB | (2) 32K x 32 |
| 512KB | (2) 64K x 32 |

| CPU SPEED SELECTION (CX 6X86) | | | | |
|-------------------------------|-------------|------------|-------|---------------------|
| CPU speed | Clock speed | Multiplier | JP2 | JP3 |
| 120MHz | 50MHz | 2x | 1 & 4 | 1 & 4, 2 & 5, 3 & 6 |
| 133MHz | 55MHz | 2x | 1 & 4 | 2 & 5, 3 & 6 |
| 150MHz | 60MHz | 2x | 1 & 4 | 1 & 4, 2 & 5 |
| 166MHz | 66MHz | 2x | 1 & 4 | 1 & 4, 3 & 6 |
| 200MHz | 75MHz | 2x | 1 & 4 | 2 & 5 |

Note: Pins designated should be in the closed position.

Continued on next page. . .

J-BOND COMPUTER SYSTEMS CORPORATION
 PCI500C - H4

... continued from previous page

| CPU SPEED SELECTION (IBM 6X86) | | | | |
|--------------------------------|-------------|------------|-------|---------------------|
| CPU speed | Clock speed | Multiplier | JP2 | JP3 |
| 120MHz | 50MHz | 2x | 1 & 4 | 1 & 4, 2 & 5, 3 & 6 |
| 133MHz | 55MHz | 2x | 1 & 4 | 2 & 5, 3 & 6 |
| 150MHz | 60MHz | 2x | 1 & 4 | 1 & 4, 2 & 5 |
| 166MHz | 66MHz | 2x | 1 & 4 | 1 & 4, 3 & 6 |
| 200MHz | 75MHz | 2x | 1 & 4 | 2 & 5 |

Note: Pins designated should be in the closed position.

| CPU SPEED SELECTION (AM K5) | | | | |
|-----------------------------|-------------|------------|--------------|---------------------|
| CPU speed | Clock speed | Multiplier | JP2 | JP3 |
| 75MHz | 50MHz | 1.5x | Open | 1 & 4, 2 & 5, 3 & 6 |
| 90MHz | 60MHz | 1.5x | Open | 1 & 4, 2 & 5 |
| 100MHz | 66MHz | 1.5x | Open | 1 & 4, 3 & 6 |
| 120MHz | 60MHz | 2x | 1 & 4 | 1 & 4, 2 & 5 |
| 133MHz | 66MHz | 2x | 1 & 4 | 1 & 4, 3 & 6 |
| 150MHz | 60MHz | 2.5x | 1 & 4, 2 & 5 | 1 & 4, 2 & 5 |
| 166MHz | 66MHz | 2.5x | 1 & 4, 2 & 5 | 1 & 4, 3 & 6 |
| 180MHz | 60MHz | 3x | 2 & 5 | 1 & 4, 2 & 5 |
| 200MHz | 66MHz | 3x | 2 & 5 | 1 & 4, 3 & 6 |

Note: Pins designated should be in the closed position.

| CPU SPEED SELECTION (AM K6) | | | | |
|-----------------------------|-------------|------------|--------------|--------------|
| CPU speed | Clock speed | Multiplier | JP2 | JP3 |
| 166MHz | 66MHz | 2.5x | 1 & 4, 2 & 5 | 1 & 4, 3 & 6 |
| 180MHz | 60MHz | 3x | 2 & 5 | 1 & 4, 2 & 5 |
| 200MHz | 66MHz | 3x | 2 & 5 | 1 & 4, 3 & 6 |
| 233MHz | 66MHz | 3.5x | Open | 1 & 4, 3 & 6 |

Note: Pins designated should be in the closed position.

| CPU SPEED SELECTION (INTEL) | | | | |
|-----------------------------|-------------|------------|--------------|---------------------|
| CPU speed | Clock speed | Multiplier | JP2 | JP3 |
| 75MHz | 50MHz | 1.5x | Open | 1 & 4, 2 & 5, 3 & 6 |
| 90MHz | 60MHz | 1.5x | Open | 1 & 4, 2 & 5 |
| 100MHz | 66MHz | 1.5x | Open | 1 & 4, 3 & 6 |
| 120MHz | 60MHz | 2x | 1 & 4 | 1 & 4, 2 & 5 |
| 133MHz | 66MHz | 2x | 1 & 4 | 1 & 4, 3 & 6 |
| 150MHz | 60MHz | 2.5x | 1 & 4, 2 & 5 | 1 & 4, 2 & 5 |
| 166MHz | 66MHz | 2.5x | 1 & 4, 2 & 5 | 1 & 4, 3 & 6 |
| 180MHz | 60MHz | 3x | 2 & 5 | 1 & 4, 2 & 5 |
| 200MHz | 66MHz | 3x | 2 & 5 | 1 & 4, 3 & 6 |

Note: Pins designated should be in the closed position.

Continued on next page...

J-BOND COMPUTER SYSTEMS CORPORATION
PCI500C-H4

... continued from previous page

| CPU VOLTAGE SELECTION | |
|-----------------------|---------------------------------|
| Voltage | JP1 |
| 2.8v | Open |
| 2.9v | Pins 3 & 6 closed |
| 3.2v | Pins 1 & 4 closed |
| 3.4v | Pins 1 & 4, 2 & 5 closed |
| 3.52v | Pins 1 & 4, 2 & 5, 3 & 6 closed |