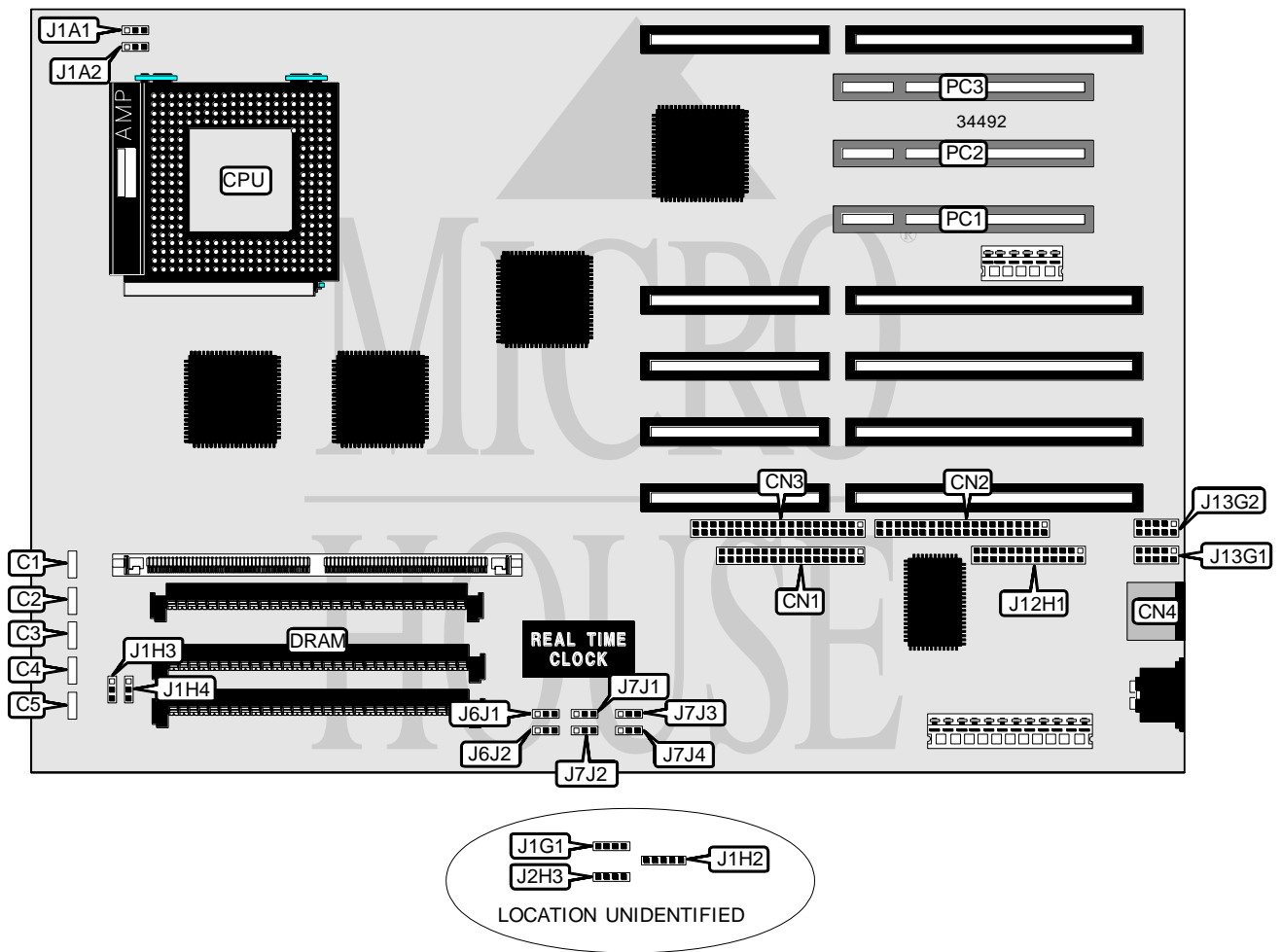


DTK COMPUTER, INC.  
PAM-00511 (VER. 1.00)

<b>Processor</b>	Pentium
<b>Processor Speed</b>	90MHz
<b>Chip Set</b>	Unidentified
<b>Video Chip Set</b>	None
<b>Maximum Onboard Memory</b>	128MB
<b>Maximum Video Memory</b>	None
<b>Cache</b>	256KB
<b>BIOS</b>	AMI
<b>Dimensions</b>	330mm x 218mm
<b>I/O Options</b>	32-bit PCI slots (3), floppy drive interface, IDE interfaces (2), parallel port, PS/2 mouse port, serial ports (2)
<b>NPU Options</b>	None



Continued on next page. . .

DTK COMPUTER, INC.  
PAM-0051I (VER. 1.00)

... continued from previous page

CONNECTIONS			
Purpose	Location	Purpose	Location
Floppy drive interface	CN1	Power LED & keylock	J1H2
IDE interface 1	CN2	IDE interface LED	J2H3
IDE interface 2	CN3	Parallel port	J12H1
PS/2 mouse port	CN4	Serial port 2	J13G1
Chassis fan power	J1A1	Serial port 1	J13G2
Chassis fan power	J1A2	32-bit PCI slots	PC1 – PC3
Speaker	J1G1		

USER CONFIGURABLE SETTINGS		
Function	Label	Position
í Factory configured - do not alter	C1	Unidentified
í Factory configured - do not alter	C2	Unidentified
í Factory configured - do not alter	C3	Unidentified
í Factory configured - do not alter	C4	Unidentified
í Factory configured - do not alter	C5	Unidentified
í Factory configured - do not alter	J1H4	Open
í CMOS memory normal operation	J6J1	Pins 1 & 2 closed
CMOS memory clear	J6J1	Pins 2 & 3 closed
í Flash BIOS normal operation	J6J2	Pins 2 & 3 closed
Flash BIOS recovery mode	J6J2	Pins 1 & 2 closed
í Setup access enabled	J7J1	Pins 1 & 2 closed
Setup access disabled	J7J1	Pins 2 & 3 closed
í Flash BIOS update enabled	J7J2	Pins 1 & 2 closed
Flash BIOS update disabled	J7J2	Pins 2 & 3 closed
í Monitor type select color	J7J3	Pins 2 & 3 closed
Monitor type select monochrome	J7J3	Pins 1 & 2 closed
í Password normal operation	J7J4	Pins 1 & 2 closed
Password clear	J7J4	Pins 2 & 3 closed

Continued on next page...

... continued from previous page

DRAM CONFIGURATION		
Size	Bank 0	Bank 1
2MB	(2) 256K x 36	None
4MB	(2) 512K x 36	None
4MB	(2) 256K x 36	(2) 256K x 36
6MB	(2) 512K x 36	(2) 256K x 36
8MB	(2) 1M x 36	None
8MB	(2) 512K x 36	(2) 512K x 36
10MB	(2) 1M x 36	(2) 256K x 36
12MB	(2) 1M x 36	(2) 512K x 36
16MB	(2) 2M x 36	None
16MB	(2) 1M x 36	(2) 1M x 36
18MB	(2) 2M x 36	(2) 256K x 36
20MB	(2) 2M x 36	(2) 512K x 36
24MB	(2) 2M x 36	(2) 1M x 36
32MB	(2) 4M x 36	None
32MB	(2) 2M x 36	(2) 2M x 36
34MB	(2) 4M x 36	(2) 256K x 36
36MB	(2) 4M x 36	(2) 512K x 36
40MB	(2) 4M x 36	(2) 1M x 36
48MB	(2) 2M x 36	(2) 4M x 36
64MB	(2) 8M x 36	None
64MB	(2) 4M x 36	(2) 4M x 36
66MB	(2) 8M x 36	(2) 256K x 36
68MB	(2) 8M x 36	(2) 512K x 36
72MB	(2) 8M x 36	(2) 1M x 36
80MB	(2) 2M x 36	(2) 8M x 36
96MB	(2) 4M x 36	(2) 8M x 36
128MB	(2) 8M x 36	(2) 8M x 36

CACHE CONFIGURATION
Note: 256KB cache is factory installed and is not configurable. The location is unidentified.

CPU SPEED SELECTION	
Speed	J1H3
90MHz	Pins 2 & 3 closed