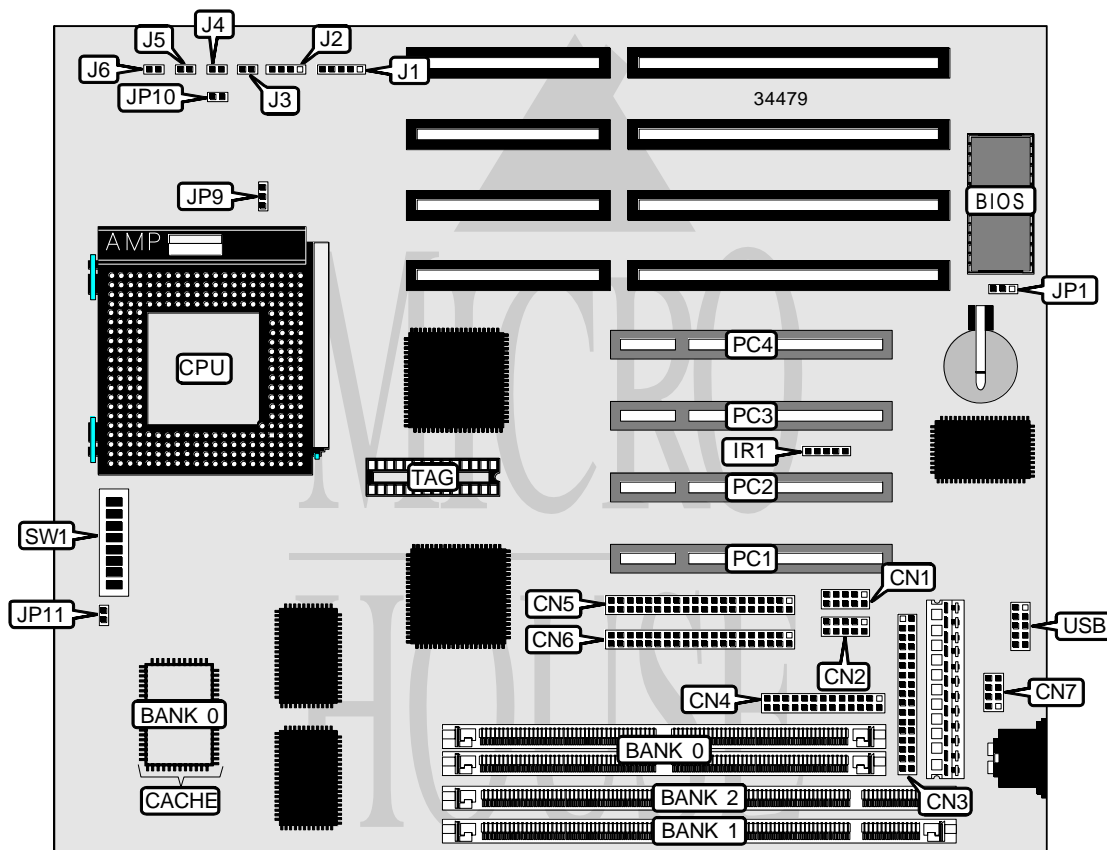


GENOA SYSTEMS CORPORATION

TURBOEXPRESS 586VX PRO

Processor	CX 6X86/IBM 6X86/CX 6X86L/IBM 6X86L/CX 6X86MX/IBM 6X86MX/ AM K5/AM K6/Pentium
Processor Speed	75/90/100/120/133/150/166/200/233/266/300MHz
Chip Set	Intel
Video Chip Set	None
Maximum Onboard Memory	128MB (EDO supported)
Maximum Video Memory	None
Cache	512KB
BIOS	Award
Dimensions	330mm x 218mm
I/O Options	32-bit PCI slots (4), floppy drive interface, green PC connector, IDE interfaces (2), parallel port, PS/2 mouse interface, serial ports (2), IR connector, USB connector
NPU Options	None



Continued on next page. . .

GENOA SYSTEMS CORPORATION
TURBOEXPRESS 586VX PRO

... continued from previous page

CONNECTIONS			
Purpose	Location	Purpose	Location
Serial port	CN1	Speaker	J1
Serial port	CN2	Power LED & keylock	J2
Floppy drive interface	CN3	IDE interface LED	J3
Parallel port	CN4	Reset switch	J4
IDE interface	CN5	Turbo LED	J5
IDE interface	CN6	Green PC connector	J6
PS/2 mouse interface	CN7	32-bit PCI slots	PC1 – PC4
IR connector	IR1	USB connector	USB

USER CONFIGURABLE SETTINGS		
Function	Label	Position
CMOS memory normal operation	JP1	Open
CMOS memory clear	JP1	Pins 2 & 3 closed

SIMM CONFIGURATION	
Size	Bank 0
8MB	(2) 1M x 36
16MB	(2) 2M x 36
32MB	(2) 4M x 36
64MB	(2) 8M x 36

Note: Board accepts EDO memory.

DIMM CONFIGURATION		
Size	Bank 1	Bank 2
8MB	(1) 1M x 64	None
16MB	(1) 2M x 64	None
16MB	(1) 1M x 64	(1) 1M x 64
24MB	(1) 2M x 64	(1) 1M x 64
32MB	(1) 4M x 64	None
32MB	(1) 2M x 64	(1) 2M x 64
40MB	(1) 4M x 64	(1) 1M x 64
48MB	(1) 4M x 64	(1) 2M x 64
64MB	(1) 8M x 64	None
64MB	(1) 4M x 64	(1) 4M x 64
72MB	(1) 8M x 64	(1) 1M x 64
80MB	(1) 8M x 64	(1) 2M x 64
96MB	(1) 8M x 64	(1) 4M x 64
128MB	(1) 8M x 64	(1) 8M x 64

Note: Board accepts EDO memory. Memory installed in Banks 1 & 2 is interchangeable.

Continued on next page. . .

GENOA SYSTEMS CORPORATION
TURBOEXPRESS 586VX PRO

... continued from previous page

DIMM/DRAM CONFIGURATION			
Size	Bank 0	Bank 1	Bank 2
16MB	(2) 1M x 36	None	(1) 1M x 64
24MB	(2) 2M x 36	None	(1) 1M x 64
24MB	(2) 1M x 36	None	(1) 2M x 64
32MB	(2) 2M x 36	None	(1) 2M x 64
40MB	(2) 4M x 36	None	(1) 1M x 64
40MB	(2) 1M x 36	None	(1) 4M x 64
48MB	(2) 4M x 36	None	(1) 2M x 64
48MB	(2) 2M x 36	None	(1) 4M x 64
64MB	(2) 4M x 36	None	(1) 4M x 64
72MB	(2) 8M x 36	None	(1) 1M x 64
72MB	(2) 1M x 36	None	(1) 8M x 64
80MB	(2) 8M x 36	None	(1) 2M x 64
80MB	(2) 2M x 36	None	(1) 8M x 64
96MB	(2) 8M x 36	None	(1) 4M x 64
96MB	(2) 4M x 36	None	(1) 8M x 64
128MB	(2) 8M x 36	None	(1) 8M x 64

Note: Board accepts EDO memory.

CACHE CONFIGURATION		
Size	Bank 0	TAG
512KB	(1) 64K x 64	Unidentified

CPU SPEED SELECTION (CYRIX 6X86/6X86L)								
CPU speed	Clock speed	Multiplier	JP11	SW1/1	SW1/2	SW1/3	SW1/4	SW1/5
120MHz	50MHz	2x	Open	On	Off	On	On	On
133MHz	55MHz	2x	Open	On	Off	Off	On	On
150MHz	60MHz	2x	Open	On	Off	On	On	Off
166MHz	66MHz	2x	Open	On	Off	On	Off	On

CPU SPEED SELECTION (IBM 6X86/6X86L)								
CPU speed	Clock speed	Multiplier	JP11	SW1/1	SW1/2	SW1/3	SW1/4	SW1/5
120MHz	50MHz	2x	Open	On	Off	On	On	On
133MHz	55MHz	2x	Open	On	Off	Off	On	On
150MHz	60MHz	2x	Open	On	Off	On	On	Off
166MHz	66MHz	2x	Open	On	Off	On	Off	On

Continued on next page...

GENOA SYSTEMS CORPORATION
TURBOEXPRESS 586VX PRO

... continued from previous page

CPU SPEED SELECTION (CYRIX 6X86MX)								
CPU speed	Clock speed	Multiplier	JP11	SW1/1	SW1/2	SW1/3	SW1/4	SW1/5
166MHz	60MHz	2.5x	Open	On	On	On	On	Off
200MHz	66MHz	2.5x	Open	On	On	On	Off	On
233MHz	66MHz	3x	Open	Off	On	On	Off	On

CPU SPEED SELECTION (IBM 6X86MX)								
CPU speed	Clock speed	Multiplier	JP11	SW1/1	SW1/2	SW1/3	SW1/4	SW1/5
166MHz	66MHz	2.5x	Open	On	On	On	On	Off
200MHz	66MHz	2.5x	Open	On	On	On	Off	On
233MHz	66MHz	3x	Open	Off	On	On	Off	On

CPU SPEED SELECTION (AM K5)								
CPU speed	Clock speed	Multiplier	JP11	SW1/1	SW1/2	SW1/3	SW1/4	SW1/5
75MHz	50MHz	1.5x	Open	Off	Off	On	On	On
90MHz	60MHz	1.5x	Open	Off	Off	On	On	Off
100MHz	66MHz	1.5x	Open	Off	Off	On	Off	On
120MHz	60MHz	1.5x	Open	Off	Off	On	On	Off
133MHz	66MHz	1.5x	Open	On	Off	On	Off	On
150MHz	60MHz	1.75x	Open	On	On	On	On	Off
166MHz	66MHz	1.75x	Open	On	On	On	Off	On

CPU SPEED SELECTION (AM K6)								
CPU speed	Clock speed	Multiplier	JP11	SW1/1	SW1/2	SW1/3	SW1/4	SW1/5
166MHz	66MHz	2.5x	Open	On	On	On	Off	On
200MHz	66MHz	3x	Open	Off	On	On	Off	On
233MHz	66MHz	3.5x	Open	Off	Off	On	Off	On
266MHz	66MHz	4x	Closed	On	Off	On	Off	On
300MHz	66MHz	4.5x	Closed	On	On	On	Off	On

CPU SPEED SELECTION (INTEL)								
CPU speed	Clock speed	Multiplier	JP11	SW1/1	SW1/2	SW1/3	SW1/4	SW1/5
75MHz	50MHz	1.5x	Open	Off	Off	On	On	On
90MHz	60MHz	1.5x	Open	Off	Off	On	On	Off
100MHz	66MHz	1.5x	Open	Off	Off	On	Off	On
120MHz	60MHz	2x	Open	On	Off	On	On	Off
133MHz	66MHz	2x	Open	On	Off	On	Off	On
150MHz	60MHz	2.5x	Open	On	On	On	On	Off
166MHz	66MHz	2.5x	Open	On	On	On	Off	On
200MHz	66MHz	3x	Open	Off	On	On	Off	On
233MHz	66MHz	3.5x	Open	Off	Off	On	Off	On

Continued on next page. . .

GENOA SYSTEMS CORPORATION
 TURBOEXPRESS 586VX PRO

... continued from previous page

CPU VOLTAGE SELECTION					
Voltage	JP9	JP10	SW1/6	SW1/7	SW1/8
2.0v	2 & 3	Open	Off	Off	Off
2.1v	2 & 3	Open	On	Off	Off
2.2v	2 & 3	Open	Off	On	Off
2.3v	2 & 3	Open	On	On	Off
2.4v	2 & 3	Open	Off	Off	On
2.5v	2 & 3	Open	On	Off	On
2.6v	2 & 3	Open	Off	On	On
2.7v	2 & 3	Open	On	On	On
2.8v	2 & 3	Closed	Off	Off	Off
2.9v	2 & 3	Closed	On	Off	Off
3.0v	2 & 3	Closed	Off	On	Off
3.1v	2 & 3	Closed	On	On	Off
3.2v	2 & 3	Closed	Off	Off	On
3.3v	1 & 2	Closed	On	Off	On
3.4v	1 & 2	Closed	Off	On	On
3.5v	1 & 2	Closed	On	On	On

Note: Pins designated should be in the closed position.