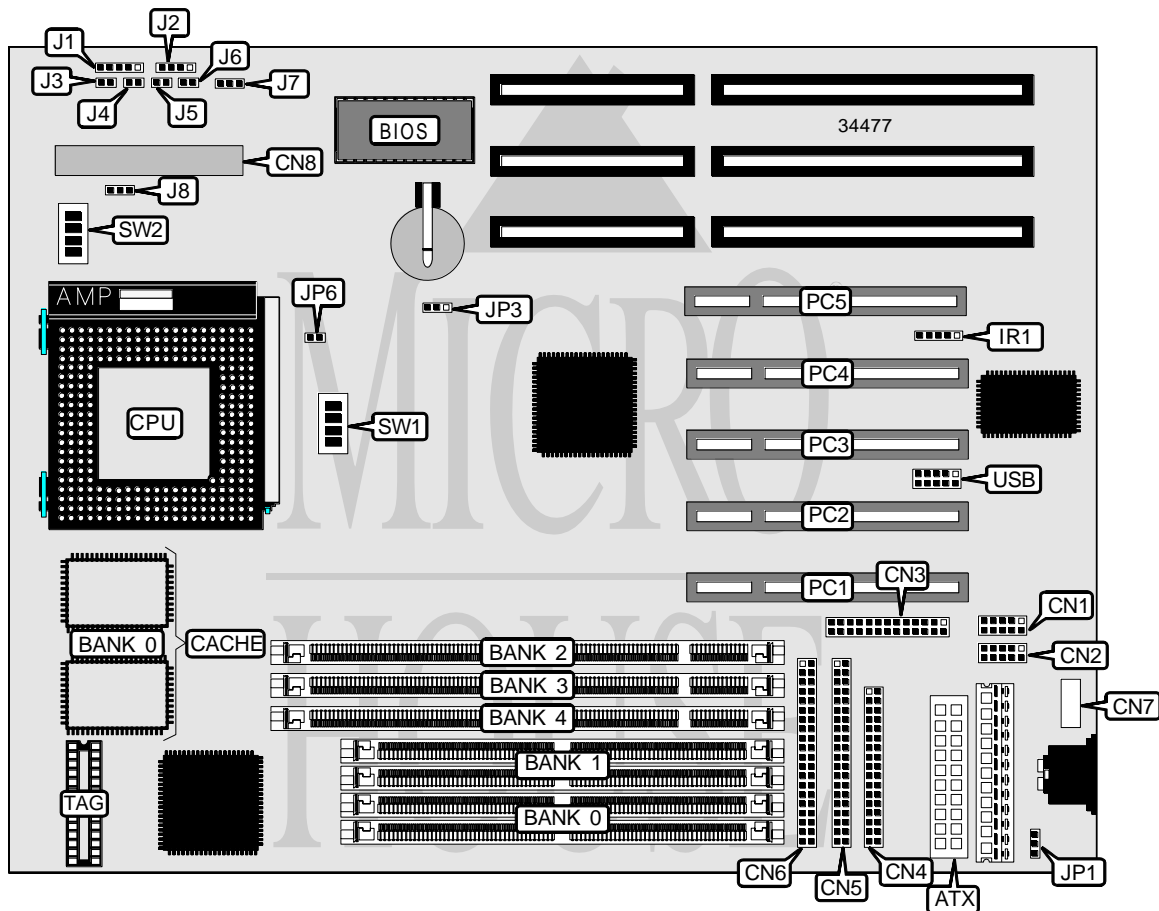


GENOA SYSTEMS CORPORATION

TURBOEXPRESS 586TX-BABY AT

Processor	CX 6X86/CX 6X86L/AM K5/AM K6/Pentium
Processor Speed	90/100/120/133/150/166/200/233MHz
Chip Set	Intel
Video Chip Set	None
Maximum Onboard Memory	256MB (EDO supported)
Maximum Video Memory	None
Cache	256/512KB
BIOS	Award
Dimensions	330mm x 218mm
I/O Options	32-bit PCI slots (5), floppy drive interface, IDE interfaces (2), parallel port, PS/2 mouse interface, serial ports (2), IR connector, USB connector, ATX power connector
NPU Options	None



Continued on next page...

GENOA SYSTEMS CORPORATION
TURBOEXPRESS 586TX-BABY AT

... continued from previous page

CONNECTIONS			
Purpose	Location	Purpose	Location
ATX power connector	ATX	Power LED & keylock	J1
Serial port 1	CN1	Speaker	J2
Serial port 2	CN2	Power switch	J3
Parallel port	CN3	Reset switch	J4
Floppy drive interface	CN4	Green PC LED	J5
IDE interface 2	CN5	Turbo switch	J6
IDE interface 1	CN6	Chassis fan power	J7
PS/2 mouse interface	CN7	CPU fan power	J8
System Management connector	CN8	32-bit PCI slots	PC1 – PC5
IR connector	IR1	USB connector	USB

USER CONFIGURABLE SETTINGS		
Function	Label	Position
CMOS memory normal operation	JP3	Open
CMOS memory clear	JP3	Pins 2 & 3 closed

SIMM CONFIGURATION		
Size	Bank 0	Bank 1
8MB	(2) 1M x 36	None
16MB	(2) 2M x 36	None
16MB	(2) 1M x 36	(2) 1M x 36
24MB	(2) 2M x 36	(2) 1M x 36
32MB	(2) 4M x 36	None
32MB	(2) 2M x 36	(2) 2M x 36
40MB	(2) 4M x 36	(2) 1M x 36
48MB	(2) 4M x 36	(2) 2M x 36
64MB	(2) 8M x 36	None
64MB	(2) 4M x 36	(2) 4M x 36
72MB	(2) 8M x 36	(2) 1M x 36
80MB	(2) 8M x 36	(2) 2M x 36
96MB	(2) 8M x 36	(2) 4M x 36
128MB	(2) 8M x 36	(2) 8M x 36
128MB	(2) 16M x 36	None
136MB	(2) 16M x 36	(2) 1M x 36
144MB	(2) 16M x 36	(2) 2M x 36
160MB	(2) 16M x 36	(2) 4M x 36
192MB	(2) 16M x 36	(2) 8M x 36
256MB	(2) 32M x 36	None
256MB	(2) 16M x 36	(2) 16M x 36

Note: Board accepts EDO memory.

Continued on next page. . .

GENOA SYSTEMS CORPORATION
 TURBOEXPRESS 586TX-BABY AT

... continued from previous page

DIMM CONFIGURATION			
Size	Bank 2	Bank 3	Bank 4
8MB	(1) 1M x 64	None	None
16MB	(1) 1M x 64	(1) 1M x 64	None
16MB	(1) 2M x 64	None	None
24MB	(1) 1M x 64	(1) 1M x 64	(1) 1M x 64
32MB	(1) 2M x 64	(1) 2M x 64	None
32MB	(1) 4M x 64	None	None
48MB	(1) 2M x 64	(1) 2M x 64	(1) 2M x 64
64MB	(1) 4M x 64	(1) 4M x 64	None
64MB	(1) 8M x 64	None	None
96MB	(1) 4M x 64	(1) 4M x 64	(1) 4M x 64
128MB	(1) 16M x 64	None	None
192MB	(1) 8M x 64	(1) 8M x 64	(1) 8M x 64
256MB	(1) 16M x 64	(1) 16M x 64	None
256MB	(1)32M x 64	None	None

DIMM/DRAM CONFIGURATION					
Size	Bank 0	Bank 1	Bank 2	Bank 3	Bank 4
16MB	None	(2) 1M x 36	(1) 1M x 64	None	None
24MB	(2) 1M x 36	(2) 1M x 36	(1) 1M x 64	None	None
24MB	(2) 1M x 36	None	(1) 1M x 64	None	(1) 1M x 64
32MB	(2) 1M x 36	(2) 1M x 36	(1) 2M x 64	None	None
32MB	None	(2) 2M x 36	(1) 2M x 64	None	None
40MB	(2) 2M x 36	(2) 2M x 36	(1) 1M x 64	None	None
40MB	(2) 2M x 36	None	(1) 2M x 64	None	(1) 1M x 64
48MB	(2) 2M x 36	(2) 2M x 36	(1) 2M x 64	None	None
48MB	(2) 1M x 36	(2) 1M x 36	(1) 4M x 64	None	None
64MB	(2) 2M x 36	(2) 2M x 36	(1) 4M x 64	None	None
64MB	None	(2) 4M x 36	(1) 4M x 64	None	None
72MB	(2) 4M x 36	(2) 4M x 36	(1) 1M x 64	None	None
72MB	(2) 4M x 36	None	(1) 4M x 64	None	(1) 1M x 64
80MB	(2) 4M x 36	(2) 4M x 36	(1) 2M x 64	None	None
96MB	(2) 4M x 36	(2) 4M x 36	(1) 4M x 64	None	None
128MB	None	(2) 8M x 36	(1) 8M x 64	None	None
136MB	(2) 8M x 36	(2) 8M x 36	(1) 1M x 64	None	None
136MB	(2) 8M x 36	None	(1) 8M x 64	None	(1) 1M x 64
160MB	(2) 8M x 36	(2) 8M x 36	(1) 4M x 64	None	None
256MB	None	(2) 16M x 36	(1) 16M x 64	None	None

CACHE CONFIGURATION		
Size	Bank 0	TAG
256KB	(2) 32K x 32	Unidentified
512KB	(2) 64K x 32	Unidentified

Continued on next page...

GENOA SYSTEMS CORPORATION
TURBOEXPRESS 586TX-BABY AT

... continued from previous page

CPU SPEED SELECTION (CX 6X86)						
CPU speed	Clock speed	Multiplier	SW1/1	SW1/2	SW1/3	SW1/4
133MHz	55MHz	2x	On	Off	On	On
150MHz	60MHz	2x	On	Off	On	Off
166MHz	66MHz	2x	On	Off	Off	Off

CPU SPEED SELECTION (CX 6X86L)						
CPU speed	Clock speed	Multiplier	SW1/1	SW1/2	SW1/3	SW1/4
133MHz	55MHz	2x	On	Off	On	On
150MHz	60MHz	2x	On	Off	On	Off
166MHz	66MHz	2x	On	Off	Off	Off

CPU SPEED SELECTION (IBM 6X86)						
CPU speed	Clock speed	Multiplier	SW1/1	SW1/2	SW1/3	SW1/4
133MHz	55MHz	2x	On	Off	On	On
150MHz	60MHz	2x	On	Off	On	Off
166MHz	66MHz	2x	On	Off	Off	Off

CPU SPEED SELECTION (IBM 6X86L)						
CPU speed	Clock speed	Multiplier	SW1/1	SW1/2	SW1/3	SW1/4
133MHz	55MHz	2x	On	Off	On	On
150MHz	60MHz	2x	On	Off	On	Off
166MHz	66MHz	2x	On	Off	Off	Off

CPU SPEED SELECTION (AM K5)						
CPU speed	Clock speed	Multiplier	SW1/1	SW1/2	SW1/3	SW1/4
90MHz	60MHz	1.5x	Off	Off	On	Off
100MHz	66MHz	1.5x	Off	Off	Off	Off
120MHz	60MHz	1.5x	Off	Off	On	Off
133MHz	66MHz	1.5x	On	Off	Off	Off
150MHz	60MHz	1.75x	On	On	On	Off
166MHz	66MHz	1.75x	On	On	Off	Off

CPU SPEED SELECTION (AM K6)						
CPU speed	Clock speed	Multiplier	SW1/1	SW1/2	SW1/3	SW1/4
166MHz	66MHz	2.5x	On	On	Off	Off
200MHz	66MHz	3x	Off	On	Off	Off
233MHz	66MHz	3.5x	Off	Off	Off	Off

Continued on next page...

GENOA SYSTEMS CORPORATION
 TURBOEXPRESS 586TX-BABY AT

... continued from previous page

CPU SPEED SELECTION (INTEL)						
CPU speed	Clock speed	Multiplier	SW1/1	SW1/2	SW1/3	SW1/4
90MHz	60MHz	1.5x	Off	Off	On	Off
100MHz	66MHz	1.5x	Off	Off	Off	Off
120MHz	60MHz	2x	On	Off	On	Off
133MHz	66MHz	2x	On	Off	Off	Off
150MHz	60MHz	2.5x	On	On	On	Off
166MHz	66MHz	2.5x	On	On	Off	Off
200MHz	66MHz	3x	Off	On	Off	Off
233MHz	66MHz	3.5x	Off	Off	Off	Off

CPU VOLTAGE SELECTION				
Voltage	SW2/1	SW2/2	SW2/3	SW2/4
2.5v	On	Off	Off	Off
2.8v	Off	On	Off	Off
2.9v	Off	Off	On	Off
3.2v	Off	Off	Off	On
3.3v	N/A	N/A	N/A	N/A
3.5v	N/A	N/A	N/A	N/A

POWER SELECTION		
Setting	JP1	JP6
í AT	Pins 2 & 3 closed	Closed
ATX	Pins 1 & 2 closed	Open