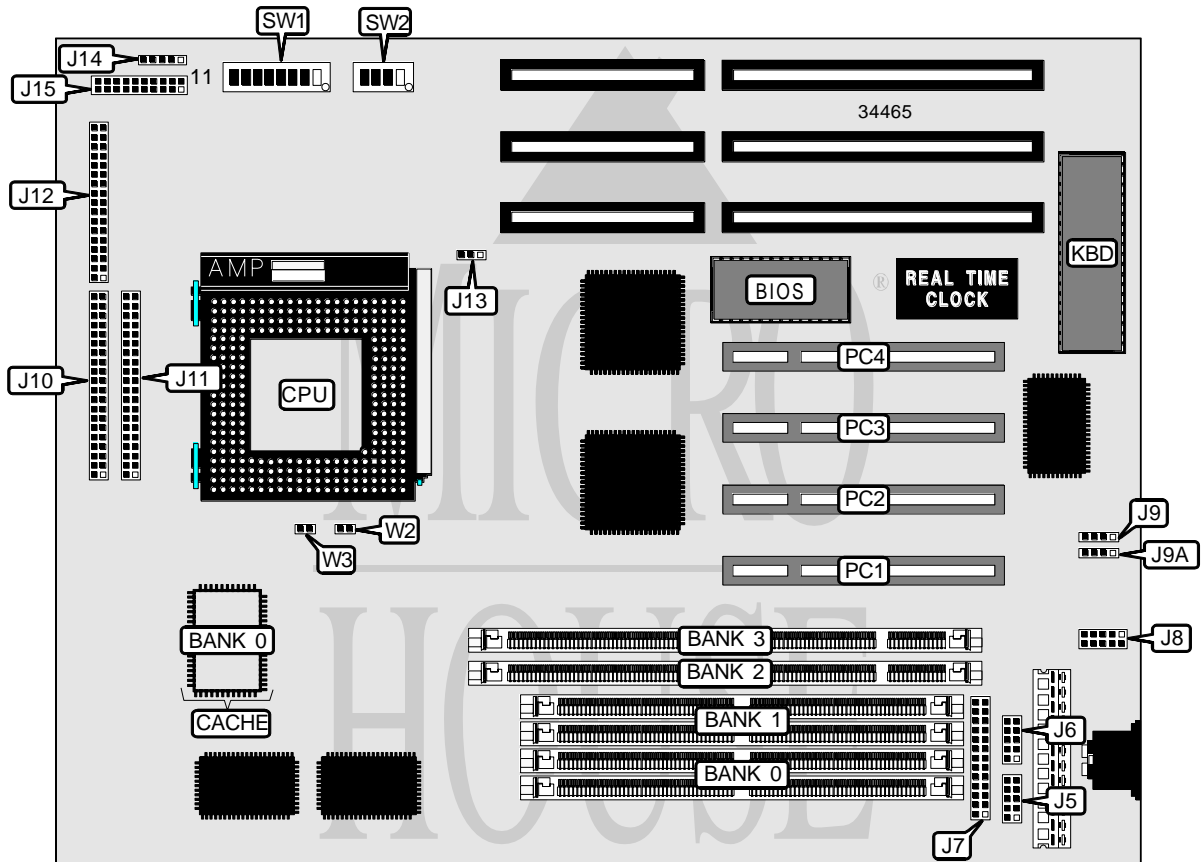


TMC RESEARCH CORPORATION

AI5TV (VER. 2.2)

| | |
|-------------------------------|-------------------------------------------------------------------------------------------------------------------------------------------------------------------------------|
| Processor | CX 6X86/CX 6X86L/CX 6X86MX/AM K5/AM K6/Pentium |
| Processor Speed | 75/90/100/120/133/150/166/200/233MHz |
| Chip Set | Intel |
| Video Chip Set | None |
| Maximum Onboard Memory | 128MB (EDO supported) |
| Maximum Video Memory | None |
| Cache | 512KB |
| BIOS | Award |
| Dimensions | 254mm x 218mm |
| I/O Options | 32-bit PCI slots (4), floppy drive interface, green PC connector, IDE interfaces (2), parallel port, PS/2 mouse interface, serial ports (2), IR connector, USB connectors (2) |
| NPU Options | None |



Continued on next page . . .

TMC RESEARCH CORPORATION
AI5TV (VER. 2.2)

... continued from previous page

| CONNECTIONS | | | |
|------------------------|----------|---------------------|------------------|
| Purpose | Location | Purpose | Location |
| Serial port 1 | J5 | Chassis fan power | J13 |
| Serial port 2 | J6 | IR connector | J14 |
| Parallel port | J7 | Speaker | J15/pins 1 & 4 |
| PS/2 mouse interface | J8 | Green PC connector | J15/pins 6 & 16 |
| USB connector | J9 | Turbo LED | J15/pins 8 & 18 |
| USB connector | J9A | Reset switch | J15/pins 9 & 19 |
| IDE interface 1 | J10 | IDE interface LED | J15/pins 10 & 20 |
| IDE interface 2 | J11 | Power LED & keylock | J15/pins 11 & 15 |
| Floppy drive interface | J12 | 32-bit PCI slots | PC1 – PC4 |

| USER CONFIGURABLE SETTINGS | | |
|-------------------------------------|-------|--------------|
| Function | Label | Position |
| í CMOS memory normal operation | SW1/7 | Off |
| CMOS memory clear | SW1/7 | On |
| í Factory configured - do not alter | SW1/8 | Unidentified |

| DRAM CONFIGURATION | | |
|--------------------|-------------|-------------|
| Size | Bank 0 | Bank 1 |
| 8MB | (2) 1M x 36 | None |
| 16MB | (2) 2M x 36 | None |
| 16MB | (2) 1M x 36 | (2) 1M x 36 |
| 24MB | (2) 2M x 36 | (2) 1M x 36 |
| 32MB | (2) 4M x 36 | None |
| 32MB | (2) 2M x 36 | (2) 2M x 36 |
| 40MB | (2) 4M x 36 | (2) 1M x 36 |
| 48MB | (2) 4M x 36 | (2) 2M x 36 |
| 64MB | (2) 8M x 36 | None |
| 64MB | (2) 4M x 36 | (2) 4M x 36 |
| 72MB | (2) 8M x 36 | (2) 1M x 36 |
| 80MB | (2) 8M x 36 | (2) 2M x 36 |
| 96MB | (2) 8M x 36 | (2) 4M x 36 |
| 128MB | (2) 8M x 36 | (2) 8M x 36 |

Note: Board accepts EDO memory.

Continued on next page. . .

TMC RESEARCH CORPORATION
AI5TV (VER. 2.2)

... continued from previous page

| DIMM CONFIGURATION | | |
|--------------------|-------------|-------------|
| Size | Bank 2 | Bank 3 |
| 8MB | (1) 1M x 64 | None |
| 16MB | (1) 2M x 64 | None |
| 16MB | (1) 1M x 64 | (1) 1M x 64 |
| 24MB | (1) 2M x 64 | (1) 1M x 64 |
| 32MB | (1) 4M x 64 | None |
| 32MB | (1) 2M x 64 | (1) 2M x 64 |
| 40MB | (1) 4M x 64 | (1) 1M x 64 |
| 48MB | (1) 4M x 64 | (1) 2M x 64 |
| 64MB | (1) 4M x 64 | (1) 4M x 64 |

| CACHE CONFIGURATION | |
|---------------------|--------------|
| Size | Bank 0 |
| 512KB | (1) 64K x 64 |

| CPU SPEED SELECTION (CX 8X86/X86L) | | | | | | | | |
|------------------------------------|-------------|------------|-------|-------|-------|-------|-------|-------|
| CPU speed | Clock speed | Multiplier | SW1/1 | SW1/2 | SW1/3 | SW1/4 | SW1/5 | SW1/6 |
| 120MHz | 50MHz | 2x | On | On | On | Off | On | Off |
| 133MHz | 55MHz | 2x | On | On | Off | Off | On | Off |
| 150MHz | 60MHz | 2x | Off | On | On | Off | On | Off |
| 166MHz | 66MHz | 2x | On | Off | On | Off | On | Off |

| CPU SPEED SELECTION (CX 6X86MX) | | | | | | | | |
|---------------------------------|-------------|------------|-------|-------|-------|-------|-------|-------|
| CPU speed | Clock speed | Multiplier | SW1/1 | SW1/2 | SW1/3 | SW1/4 | SW1/5 | SW1/6 |
| 166MHz | 66MHz | 2.5x | On | Off | On | Off | On | On |
| 200MHz | 66MHz | 2.5x | On | Off | On | Off | On | On |
| 233MHz | 66MHz | 3x | On | Off | On | Off | Off | On |

| CPU SPEED SELECTION (AM K5) | | | | | | | | |
|-----------------------------|-------------|------------|-------|-------|-------|-------|-------|-------|
| CPU speed | Clock speed | Multiplier | SW1/1 | SW1/2 | SW1/3 | SW1/4 | SW1/5 | SW1/6 |
| 75MHz | 50MHz | 1.5x | On | On | On | Off | Off | Off |
| 90MHz | 60MHz | 1.5x | Off | On | On | Off | Off | Off |
| 100MHz | 66MHz | 1.5x | On | Off | On | Off | Off | Off |
| 120MHz | 60MHz | 1.5x | Off | On | On | Off | On | Off |
| 133MHz | 66MHz | 1.5x | On | Off | On | Off | On | Off |
| 150MHz | 60MHz | 1.75x | Off | On | On | Off | On | Off |
| 166MHz | 66MHz | 1.75x | On | Off | On | On | Off | Off |

| CPU SPEED SELECTION (AM K6) | | | | | | | | |
|-----------------------------|-------------|------------|-------|-------|-------|-------|-------|-------|
| CPU speed | Clock speed | Multiplier | SW1/1 | SW1/2 | SW1/3 | SW1/4 | SW1/5 | SW1/6 |
| 166MHz | 66MHz | 1.75x | On | Off | On | On | Off | Off |
| 200MHz | 66MHz | 3x | On | Off | On | Off | Off | On |
| 233MHz | 66MHz | 3.5x | On | Off | On | Off | Off | Off |

Continued on next page. . .

TMC RESEARCH CORPORATION
AI5TV (VER. 2.2)

... continued from previous page

| CPU SPEED SELECTION (INTEL) | | | | | | | | |
|-----------------------------|-------------|------------|-------|-------|-------|-------|-------|-------|
| CPU speed | Clock speed | Multiplier | SW1/1 | SW1/2 | SW1/3 | SW1/4 | SW1/5 | SW1/6 |
| 75MHz | 50MHz | 1.5x | On | On | On | Off | Off | Off |
| 90MHz | 60MHz | 1.5x | Off | On | On | Off | Off | Off |
| 100MHz | 66MHz | 1.5x | On | Off | On | Off | Off | Off |
| 120MHz | 60MHz | 2x | Off | On | On | Off | On | Off |
| 133MHz | 66MHz | 2x | On | Off | On | Off | On | Off |
| 150MHz | 60MHz | 2.5x | Off | On | On | Off | On | On |
| 166MHz | 66MHz | 2.5x | On | Off | On | Off | On | On |
| 200MHz | 66MHz | 3x | On | Off | On | Off | Off | On |
| 233MHz | 66MHz | 3.5x | On | Off | On | Off | Off | Off |

| CPU VOLTAGE SELECTION (SINGLE) | | | | | | |
|--------------------------------|-------|-------|------|------|--------|------|
| Voltage | SW2/1 | SW2/2 | SW/3 | SW/4 | W2 | W3 |
| 3.5v | On | On | On | On | Closed | Open |

| CPU VOLTAGE SELECTION (DUAL) | | | | | | | |
|------------------------------|--------|-------|-------|------|------|------|--------|
| Voltage | V core | SW2/1 | SW2/2 | SW/3 | SW/4 | W2 | W3 |
| 3.3v | 2.0v | Off | Off | Off | Off | Open | Closed |
| 3.3v | 2.6v | Off | On | On | Off | Open | Closed |
| 3.3v | 2.7v | On | On | On | Off | Open | Closed |
| 3.3v | 2.8v | Off | Off | Off | On | Open | Closed |
| 3.3v | 2.9v | On | Off | Off | On | Open | Closed |
| 3.3v | 3.0v | Off | On | Off | On | Open | Closed |
| 3.3v | 3.1v | On | On | Off | On | Open | Closed |
| 3.3v | 3.2v | Off | Off | On | On | Open | Closed |
| 3.3v | 3.5v | On | On | On | On | Open | Closed |