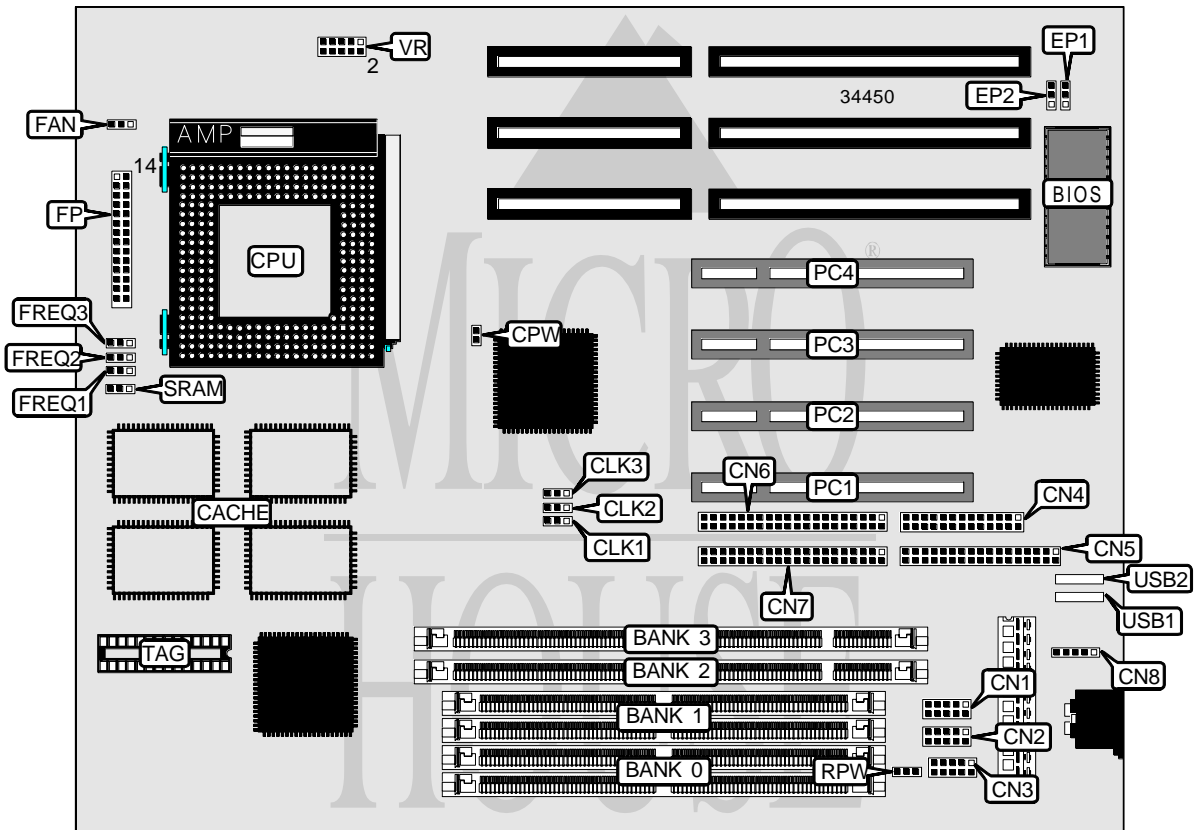


FIRST INTERNATIONAL COMPUTER, INC.

PA-2007

Processor	CX M1/CX M2/IBM M1/IBM M2/AM K5/AM K6/Pentium
Processor Speed	90/100/120/133/150/166/180/225/200/233MHz
Chip Set	VIA
Video Chip Set	None
Maximum Onboard Memory	512MB (EDO supported)
Maximum Video Memory	None
Cache	256/512/1024KB
BIOS	Award
Dimensions	254mm x 218mm
I/O Options	32-bit PCI slots (4), floppy drive interface, green PC connector, IDE interfaces (2), parallel port, PS/2 mouse interface, serial ports (2), IR connector, USB connectors (2)
NPU Options	None



Continued on next page . . .

FIRST INTERNATIONAL COMPUTER, INC.

PA-2007

... continued from previous page

CONNECTIONS			
Purpose	Location	Purpose	Location
Serial port 2	CN1	Green PC connector	FP/pins 10 & 11
Serial port 1	CN2	Green PC LED	FP/pins 13 & 14
IR connector	CN3	Speaker	FP/pins 15 - 18
Parallel port	CN4	IDE interface LED	FP/pins 20 & 21
Floppy drive interface	CN5	Remote power connector	FP/pins 23 & 24
IDE interface 2	CN6	Reset switch	FP/pins 27 & 28
IDE interface 1	CN7	32-bit PCI slots	PC1 – PC4
PS/2 mouse interface	CN8	Remote power connector	RPW
Chassis fan power	FAN	USB connector 1	USB1
Power LED & keylock	FP/pins 1 - 5	USB connector 2	USB2
Turbo LED	FP/pins 7 & 8		

USER CONFIGURABLE SETTINGS		
Function	Label	Position
í Password normal operation	CPW	Open
Password clear	CPW	Closed

DRAM CONFIGURATION		
Size	Bank 0	Bank 1
8MB	(2) 1M x 36	None
16MB	(2) 2M x 36	None
16MB	(2) 1M x 36	(2) 1M x 36
24MB	(2) 2M x 36	(2) 1M x 36
32MB	(2) 4M x 36	None
32MB	(2) 2M x 36	(2) 2M x 36
40MB	(2) 4M x 36	(2) 1M x 36
48MB	(2) 4M x 36	(2) 2M x 36
64MB	(2) 8M x 36	None
64MB	(2) 4M x 36	(2) 4M x 36
72MB	(2) 8M x 36	(2) 1M x 36
80MB	(2) 8M x 36	(2) 2M x 36
96MB	(2) 8M x 36	(2) 4M x 36
128MB	(2) 8M x 36	(2) 8M x 36
128MB	(2) 16M x 36	None
136MB	(2) 16M x 36	(2) 1M x 36
144MB	(2) 16M x 36	(2) 2M x 36
160MB	(2) 16M x 36	(2) 4M x 36
192MB	(2) 16M x 36	(2) 8M x 36
256MB	(2) 16M x 36	(2) 16M x 36
256MB	(2) 32M x 36	None
264MB	(2) 32M x 36	(2) 1M x 36
272MB	(2) 32M x 36	(2) 2M x 36

Continued on next page...

FIRST INTERNATIONAL COMPUTER, INC.
 PA-2007

... continued from previous page

DRAM CONFIGURATION (CON'T)		
Size	Bank 0	Bank 1
288MB	(2) 32M x 36	(2) 4M x 36
320MB	(2) 32M x 36	(2) 8M x 36
384MB	(2) 32M x 36	(2) 16M x 36
512MB	(2) 32M x 36	(2) 32M x 36

Note: Board accepts EDO memory. Do not install DIMMs & SIMMs at the same time.

DIMM CONFIGURATION		
Size	Bank 2	Bank 3
8MB	(1) 1M x 64	None
16MB	(1) 2M x 64	None
16MB	(1) 1M x 64	(1) 1M x 64
24MB	(1) 2M x 64	(1) 1M x 64
32MB	(1) 4M x 64	None
32MB	(1) 2M x 64	(1) 2M x 64
40MB	(1) 4M x 64	(1) 1M x 64
48MB	(1) 4M x 64	(1) 2M x 64
64MB	(1) 8M x 64	None
64MB	(1) 4M x 64	(1) 4M x 64
72MB	(1) 8M x 64	(1) 1M x 64
80MB	(1) 8M x 64	(1) 2M x 64
96MB	(1) 8M x 64	(1) 4M x 64
128MB	(1) 8M x 64	(1) 8M x 64

CACHE CONFIGURATION
Note: 512KB cache is factory installed and is not configurable. 256KB or 1MB cache is available as an option from First International Computer, Inc.

CACHE JUMPER CONFIGURATION	
Type	SRAM
í Intel burst	Pins 1 & 2 closed
Linear burst	Pins 2 & 3 closed

CPU SPEED SELECTION (CX M1)								
CPU speed	Clock speed	Multiplier	CLK1	CLK2	CLK3	FREQ1	FREQ2	FREQ3
133MHz	55MHz	2x	2 & 3	2 & 3	2 & 3	2 & 3	1 & 2	1 & 2
150MHz	60MHz	2x	2 & 3	1 & 2	2 & 3	2 & 3	1 & 2	1 & 2
166MHz	66MHz	2x	1 & 2	1 & 2	2 & 3	2 & 3	1 & 2	1 & 2

Note: Pins designated should be in the closed position.

Continued on next page...

FIRST INTERNATIONAL COMPUTER, INC.

PA-2007

... continued from previous page

CPU SPEED SELECTION (CX M2)

CPU speed	Clock speed	Multiplier	CLK1	CLK2	CLK3	FREQ1	FREQ2	FREQ3
150MHz	60MHz	2.5x	2 & 3	1 & 2	2 & 3	2 & 3	2 & 3	1 & 2
166MHz	66MHz	2.5x	1 & 2	1 & 2	2 & 3	2 & 3	2 & 3	1 & 2
180MHz	75MHz	2.5x	1 & 2	2 & 3	2 & 3	2 & 3	2 & 3	1 & 2
225MHz	75MHz	3x	1 & 2	2 & 3	2 & 3	1 & 2	2 & 3	1 & 2
200MHz	66MHz	3x	1 & 2	1 & 2	2 & 3	1 & 2	2 & 3	1 & 2
233MHz	66MHz	3.5x	1 & 2	1 & 2	2 & 3	1 & 2	1 & 2	1 & 2

Note: Pins designated should be in the closed position.

CPU SPEED SELECTION (IBM M1)

CPU speed	Clock speed	Multiplier	CLK1	CLK2	CLK3	FREQ1	FREQ2	FREQ3
133MHz	55MHz	2x	2 & 3	2 & 3	2 & 3	2 & 3	1 & 2	1 & 2
150MHz	60MHz	2x	2 & 3	1 & 2	2 & 3	2 & 3	1 & 2	1 & 2
166MHz	66MHz	2x	1 & 2	1 & 2	2 & 3	2 & 3	1 & 2	1 & 2

Note: Pins designated should be in the closed position.

CPU SPEED SELECTION (IBM M2)

CPU speed	Clock speed	Multiplier	CLK1	CLK2	CLK3	FREQ1	FREQ2	FREQ3
150MHz	60MHz	2.5x	2 & 3	1 & 2	2 & 3	2 & 3	2 & 3	1 & 2
166MHz	66MHz	2.5x	1 & 2	1 & 2	2 & 3	2 & 3	2 & 3	1 & 2
180MHz	75MHz	2.5x	1 & 2	2 & 3	2 & 3	2 & 3	2 & 3	1 & 2
225MHz	75MHz	3x	1 & 2	2 & 3	2 & 3	1 & 2	2 & 3	1 & 2
200MHz	66MHz	3x	1 & 2	1 & 2	2 & 3	1 & 2	2 & 3	1 & 2
233MHz	66MHz	3.5x	1 & 2	1 & 2	2 & 3	1 & 2	1 & 2	1 & 2

Note: Pins designated should be in the closed position.

CPU SPEED SELECTION (AM K5)

CPU speed	Clock speed	Multiplier	CLK1	CLK2	CLK3	FREQ1	FREQ2	FREQ3
90MHz	60MHz	1.5x	2 & 3	1 & 2	2 & 3	1 & 2	1 & 2	1 & 2
100MHz	66MHz	1.5x	1 & 2	1 & 2	2 & 3	1 & 2	1 & 2	1 & 2
120MHz	60MHz	1.5x	2 & 3	1 & 2	2 & 3	1 & 2	1 & 2	1 & 2
133MHz	66MHz	1.5x	1 & 2	1 & 2	2 & 3	1 & 2	1 & 2	1 & 2
150MHz	60MHz	1.75x	2 & 3	1 & 2	2 & 3	2 & 3	2 & 3	1 & 2
166MHz	66MHz	1.75x	1 & 2	1 & 2	2 & 3	2 & 3	2 & 3	1 & 2
200MHz	66MHz	2x	1 & 2	1 & 2	2 & 3	1 & 2	1 & 2	2 & 3

Note: Pins designated should be in the closed position.

CPU SPEED SELECTION (AM K6)

CPU speed	Clock speed	Multiplier	CLK1	CLK2	CLK3	FREQ1	FREQ2	FREQ3
166MHz	66MHz	2.5x	1 & 2	1 & 2	2 & 3	2 & 3	2 & 3	1 & 2
200MHz	66MHz	3x	1 & 2	1 & 2	2 & 3	1 & 2	2 & 3	1 & 2
233MHz	66MHz	3.5	1 & 2	1 & 2	2 & 3	1 & 2	1 & 2	1 & 2

Note: Pins designated should be in the closed position.

Continued on next page...

FIRST INTERNATIONAL COMPUTER, INC.
 PA-2007

... continued from previous page

CPU SPEED SELECTION (INTEL)								
CPU speed	Clock speed	Multiplier	CLK1	CLK2	CLK3	FREQ1	FREQ2	FREQ3
90MHz	60MHz	1.5x	2 & 3	1 & 2	2 & 3	1 & 2	1 & 2	1 & 2
100MHz	66MHz	1.5x	1 & 2	1 & 2	2 & 3	1 & 2	1 & 2	1 & 2
120MHz	60MHz	2x	2 & 3	1 & 2	2 & 3	2 & 3	1 & 2	1 & 2
133MHz	66MHz	2x	1 & 2	1 & 2	2 & 3	2 & 3	1 & 2	1 & 2
150MHz	60MHz	2.5x	2 & 3	1 & 2	2 & 3	2 & 3	2 & 3	1 & 2
166MHz	66MHz	2.5x	1 & 2	1 & 2	2 & 3	2 & 3	2 & 3	1 & 2
200MHz	66MHz	3x	1 & 2	1 & 2	2 & 3	1 & 2	2 & 3	1 & 2
233MHz	66MHz	3.5	1 & 2	1 & 2	2 & 3	1 & 2	1 & 2	1 & 2

Note: Pins designated should be in the closed position.

CPU VOLTAGE SELECTION (SINGLE)	
Voltage	VR
3.3v	Pins 3 & 4 closed
3.5v	Pins 1 & 2 closed

CPU VOLTAGE SELECTION (DUAL)		
Voltage	V core	VR
3.3v	2.8v	Pins 9 & 10 closed
3.3v	2.9v	Pins 7 & 8 closed
3.3v	3.2v	Pins 5 & 6 closed

FLASH BIOS SELECTION		
Setting	EP1	EP2
AMTEL AT29C020	Pins 1 & 2 closed	Pins 2 & 3 closed
Intel 28F001	Pins 2 & 3 closed	Pins 2 & 3 closed
MXIC MX28F2000	Pins 2 & 3 closed	Pins 2 & 3 closed
SST 29EE010	Pins 1 & 2 closed	Pins 2 & 3 closed