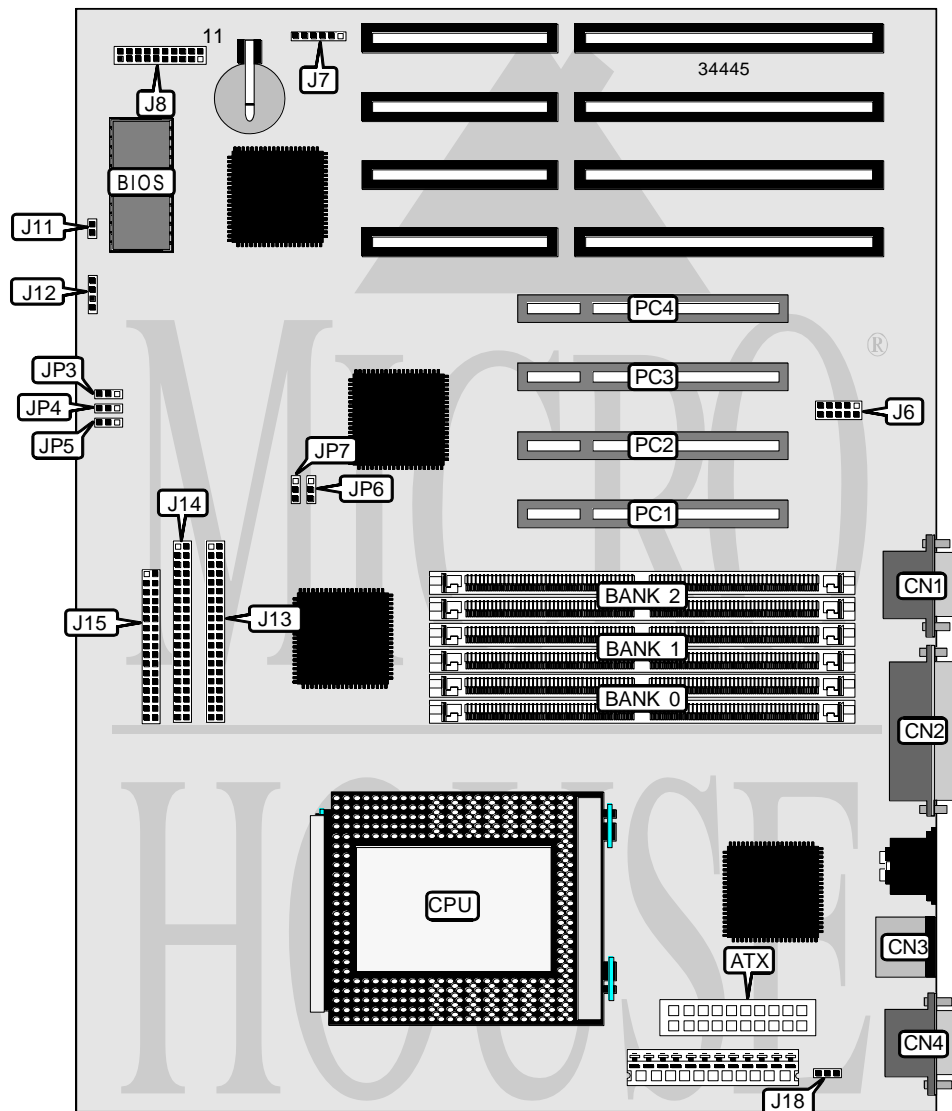


CHAINTECH COMPUTER COMPANY, LTD.

6 I T M 0 . 1

Processor	Pentium Pro
Processor Speed	150/166/180/200MHz
Chip Set	Intel
Video Chip Set	None
Maximum Onboard Memory	768MB (EDO supported)
Maximum Video Memory	None
Cache	256/512KB (located on Pentium Pro CPU)
BIOS	Award
Dimensions	305mm x 240mm
I/O Options	32-bit PCI slots (4), floppy drive interface, green PC connector, IDE interfaces (2), parallel port, PS/2 mouse port, serial ports (2), IR connector, USB connector, ATX power connector
NPU Options	None



Continued on next page. . .

CHAINTECH COMPUTER COMPANY, LTD.

6 I T M 0 . 1

... continued from previous page

CONNECTIONS			
Purpose	Location	Purpose	Location
ATX power connector	ATX	Green PC LED	J8/pins 16 & 17
Serial port 2	CN1	Reset switch	J8/pins 19 & 20
Parallel port	CN2	Soft off power supply	J11
PS/2 mouse port	CN3	IDE interface LED	J12
Serial port 1	CN4	IDE interface 1	J13
USB connector	J6	IDE interface 2	J14
IR connector	J7	Floppy drive interface	J15
Power LED & keylock	J8/pins 1 - 5	Chassis fan power	J18
Speaker	J8/pins 7 - 10	32-bit PCI slots	PC1 – PC4
Green PC connector	J8/pins 14 & 15		

DRAM CONFIGURATION			
Size	Bank 0	Bank 1	Bank 2
8MB	(2) 1M x 36	None	None
16MB	(2) 1M x 36	(2) 1M x 36	None
16MB	(2) 2M x 36	None	None
24MB	(2) 2M x 36	(2) 1M x 36	None
24MB	(2) 1M x 36	(2) 1M x 36	(2) 1M x 36
32MB	(2) 4M x 36	None	None
32MB	(2) 2M x 36	(2) 2M x 36	None
40MB	(2) 4M x 36	(2) 1M x 36	None
48MB	(2) 4M x 36	(2) 2M x 36	None
48MB	(2) 4M x 36	(2) 1M x 36	(2) 1M x 36
64MB	(2) 8M x 36	None	None
64MB	(2) 4M x 36	(2) 4M x 36	None
80MB	(2) 8M x 36	(2) 2M x 36	None
80MB	(2) 8M x 36	(2) 1M x 36	(2) 1M x 36
96MB	(2) 8M x 36	(2) 4M x 36	None
96MB	(2) 4M x 36	(2) 4M x 36	(2) 4M x 36
96MB	(2) 8M x 36	(2) 2M x 36	(2) 2M x 36
128MB	(2) 8M x 36	(2) 4M x 36	(2) 4M x 36
128MB	(2) 16M x 36	None	None
128MB	(2) 8M x 36	(2) 8M x 36	None
136MB	(2) 8M x 36	(2) 8M x 36	(2) 1M x 36
136MB	(2) 16M x 36	(2) 1M x 36	None
144MB	(2) 16M x 36	(2) 2M x 36	None
144MB	(2) 16M x 36	(2) 1M x 36	(2) 1M x 36
152MB	(2) 16M x 36	(2) 2M x 36	(2) 1M x 36
160MB	(2) 16M x 36	(2) 4M x 36	None
160MB	(2) 16M x 36	(2) 2M x 36	(2) 2M x 36
168MB	(2) 16M x 36	(2) 4M x 36	(2) 1M x 36
176MB	(2) 16M x 36	(2) 4M x 36	(2) 2M x 36

Continued on next page...

CHAINTECH COMPUTER COMPANY, LTD.
6 I T M 0 . 1

... continued from previous page

DRAM CONFIGURATION (CON'T)			
Size	Bank 0	Bank 1	Bank 2
192MB	(2) 16M x 36	(2) 8M x 36	None
192MB	(2) 16M x 36	(2) 4M x 36	(2) 4M x 36
208MB	(2) 16M x 36	(2) 8M x 36	(2) 2M x 36
224MB	(2) 16M x 36	(2) 8M x 36	(2) 4M x 36
256MB	(2) 16M x 36	(2) 16M x 36	None
256MB	(2) 16M x 36	(2) 8M x 36	(2) 8M x 36
256MB	(2) 32M x 36	None	None
264MB	(2) 16M x 36	(2) 16M x 36	(2) 1M x 36
264MB	(2) 32M x 36	(2) 1M x 36	None
272MB	(2) 16M x 36	(2) 16M x 36	(2) 2M x 36
272MB	(2) 32M x 36	(2) 2M x 36	None
288MB	(2) 16M x 36	(2) 16M x 36	(2) 4M x 36
288MB	(2) 32M x 36	(2) 4M x 36	None
320MB	(2) 16M x 36	(2) 16M x 36	(2) 8M x 36
320MB	(2) 32M x 36	(2) 8M x 36	None
384MB	(2) 16M x 36	(2) 16M x 36	(2) 16M x 36
384MB	(2) 32M x 36	(2) 16M x 36	None
512MB	(2) 32M x 36	(2) 32M x 36	None
520MB	(2) 32M x 36	(2) 32M x 36	(2) 1M x 36
528MB	(2) 32M x 36	(2) 32M x 36	(2) 2M x 36
544MB	(2) 32M x 36	(2) 32M x 36	(2) 4M x 36
576MB	(2) 32M x 36	(2) 32M x 36	(2) 8M x 36
640MB	(2) 32M x 36	(2) 32M x 36	(2) 16M x 36
768MB	(2) 32M x 36	(2) 32M x 36	(2) 32M x 36
Note: Board accepts EDO memory. Board also accepts x 32 SIMMs.			

CACHE CONFIGURATION
Note: 256KB/512KB cache is located on the Pentium Pro CPU.

CPU SPEED SELECTION							
CPU speed	Clock speed	Multiplier	JP3	JP4	JP5	JP6	JP7
150MHz	60MHz	2.5x	2 & 3	2 & 3	1 & 2	1 & 2	2 & 3
166MHz	66MHz	2.5x	2 & 3	2 & 3	1 & 2	2 & 3	1 & 2
180MHz	60MHz	3x	2 & 3	1 & 2	2 & 3	1 & 2	2 & 3
200MHz	66MHz	3x	2 & 3	1 & 2	2 & 3	2 & 3	1 & 2
Note: Pins designated should be in the closed position.							