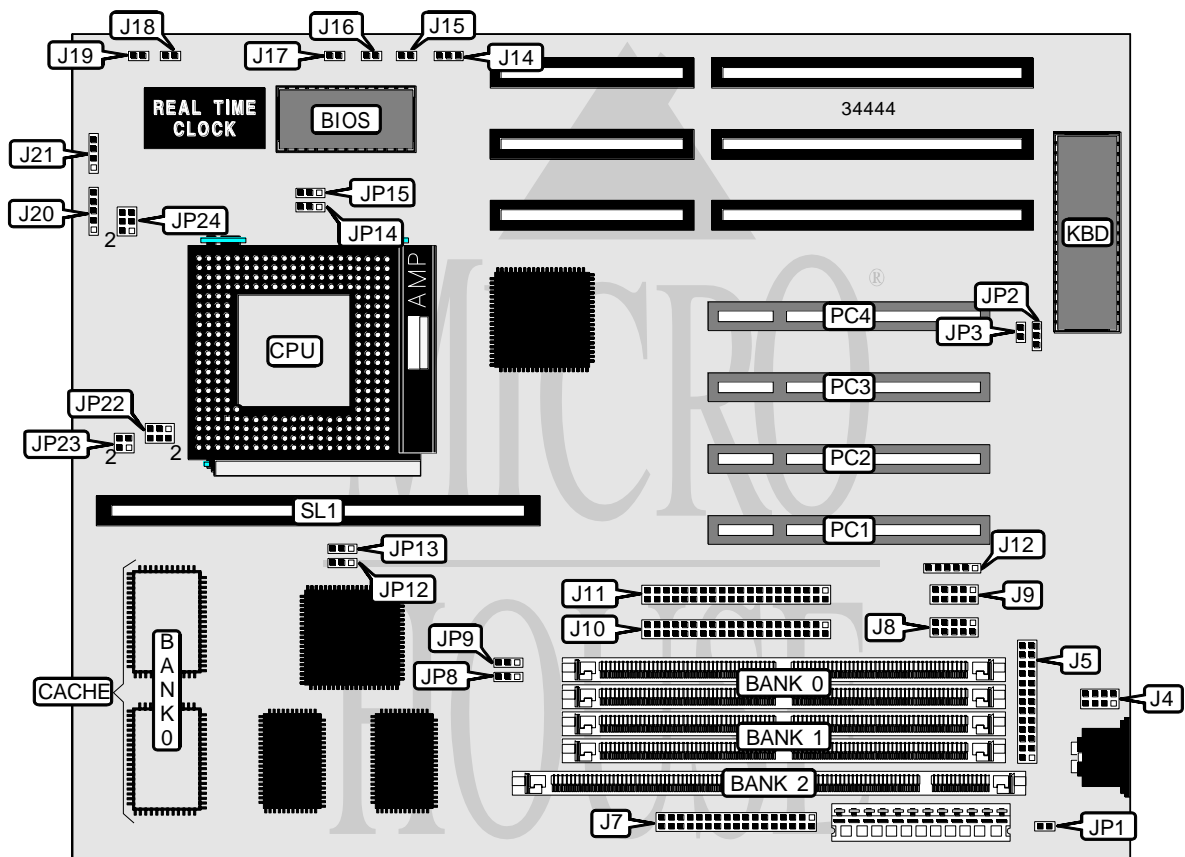


CHAINTECH COMPUTER COMPANY, LTD.

5 I G M 0.3

Processor	CX M1/AM K5/Pentium
Processor Speed	75/90/100/120/133/150/166/200MHz
Chip Set	Intel
Video Chip Set	None
Maximum Onboard Memory	128MB (EDO supported)
Maximum Video Memory	None
Cache	256/512KB
BIOS	Award
Dimensions	270mm x 220mm
I/O Options	32-bit PCI slots (4), floppy drive interface, green PC connector, IDE interfaces (2), parallel port, PS/2 mouse interface, serial ports (2), cache slot, IR connector
NPU Options	None



Continued on next page . . .

CHAINTECH COMPUTER COMPANY, LTD.
5 I G M 0 . 3

... continued from previous page

CONNECTIONS			
Purpose	Location	Purpose	Location
PS/2 mouse interface	J4	IDE interface LED	J15
Parallel port	J5	Green PC connector	J16
Floppy drive interface	J7	Green PC LED	J17
Serial port 1	J8	Reset switch	J18
Serial port 2	J9	Turbo LED	J19
IDE interface 1	J10	Power LED & keylock	J20
IDE interface 2	J11	Speaker	J21
IR connector	J12	32-bit PCI slots	PC1 – PC4
Chassis fan power	J14	Cache slot	SL1

USER CONFIGURABLE SETTINGS		
Function	Label	Position
í Factory configured - do not alter	JP1	Unidentified
í On board I/O enabled	JP2	Pins 1 & 2 closed
On board I/O disabled	JP2	Pins 2 & 3 closed
í Password disabled	JP3	Open
Password enabled	JP3	Closed

DIMM/DRAM CONFIGURATION			
Size	Bank 0	Bank 1	Bank 2
8MB	(2) 1M x 36	None	None
8MB	None	None	(1) 1M x 64
16MB	(2) 2M x 36	None	None
16MB	(2) 1M x 36	(2) 1M x 36	None
16MB	None	None	(1) 2M x 64
16MB	None	(2) 1M x 36	(1) 1M x 64
24MB	(2) 2M x 36	(2) 1M x 36	None
24MB	None	(2) 1M x 36	(1) 2M x 64
24MB	None	(2) 2M x 36	(1) 1M x 64
32MB	(2) 4M x 36	None	None
32MB	(2) 2M x 36	(2) 2M x 36	None
32MB	None	None	(1) 4M x 64
32MB	None	(2) 2M x 36	(1) 2M x 64
40MB	(2) 4M x 36	(2) 1M x 36	None
40MB	None	(2) 1M x 36	(1) 4M x 64
48MB	(2) 4M x 36	(2) 2M x 36	None
48MB	None	(2) 2M x 36	(1) 4M x 64
64MB	(2) 8M x 36	None	None
64MB	(2) 4M x 36	(2) 4M x 36	None
64MB	None	None	(1) 8M x 64
64MB	None	(2) 4M x 36	(1) 4M x 64
72MB	(2) 8M x 36	(2) 1M x 36	None

Continued on next page...

CHAINTECH COMPUTER COMPANY, LTD.

5 I G M 0.3

... continued from previous page

DIMM/DRAM CONFIGURATION (CON'T)			
Size	Bank 0	Bank 1	Bank 2
72MB	None	(2) 1M x 36	(1) 8M x 64
80MB	(2) 8M x 36	(2) 2M x 36	None
80MB	None	(2) 2M x 36	(1) 8M x 64
96MB	(2) 8M x 36	(2) 4M x 36	None
96MB	None	(2) 8M x 36	(1) 4M x 64
128MB	(2) 8M x 36	(2) 8M x 36	None
128MB	(2) 8M x 36	None	(1) 8M x 64

Note: Board accepts EDO memory. Board also accepts x 32 SIMMs. Banks 0 & 1 are interchangeable.

CACHE CONFIGURATION		
Size	Bank 0	SL1
256KB	(2) 32K x 32	Not installed
512KB (A)	(2) 32K x 32	256KB module installed
512KB (B)	(2) 64K x 32	Not installed

CACHE JUMPER CONFIGURATION		
Size	JP12	JP13
256KB	Pins 2 & 3 closed	Pins 2 & 3 closed
512KB (A)	Pins 1 & 2 closed	Pins 1 & 2 closed
512KB (B)	Pins 1 & 2 closed	Pins 1 & 2 closed

CPU SPEED SELECTION (CYRIX)						
CPU speed	Clock speed	Multiplier	JP8	JP9	JP14	JP15
120MHz	50MHz	2x	2 & 3	2 & 3	1 & 2	2 & 3
133MHz	55MHz	2x	1 & 2	1 & 2	1 & 2	2 & 3
150MHz	60MHz	2x	1 & 2	2 & 3	1 & 2	2 & 3
166MHz	66MHz	2x	2 & 3	1 & 2	1 & 2	2 & 3

Note: Pins designated should be in the closed position.

CPU SPEED SELECTION (AMD)						
CPU speed	Clock speed	Multiplier	JP8	JP9	JP14	JP15
75MHz	50MHz	1.5x	2 & 3	2 & 3	1 & 2	1 & 2
90MHz	60MHz	1.5x	1 & 2	2 & 3	1 & 2	1 & 2
100MHz	66MHz	1.5x	2 & 3	1 & 2	1 & 2	1 & 2
120MHz	60MHz	1.5x	1 & 2	2 & 3	1 & 2	1 & 2
133MHz	66MHz	1.5x	2 & 3	1 & 2	1 & 2	1 & 2

Note: Pins designated should be in the closed position.

Continued on next page. . .

CHAINTECH COMPUTER COMPANY, LTD.
5 I G M 0 . 3

... continued from previous page

CPU SPEED SELECTION (INTEL)						
CPU speed	Clock speed	Multiplier	JP8	JP9	JP14	JP15
75MHz	50MHz	1.5x	2 & 3	2 & 3	1 & 2	1 & 2
90MHz	60MHz	1.5x	1 & 2	2 & 3	1 & 2	1 & 2
100MHz	66MHz	1.5x	2 & 3	1 & 2	1 & 2	1 & 2
120MHz	60MHz	2x	1 & 2	2 & 3	1 & 2	2 & 3
133MHz	66MHz	2x	2 & 3	1 & 2	1 & 2	2 & 3
150MHz	60MHz	2.5x	1 & 2	2 & 3	2 & 3	2 & 3
166MHz	66MHz	2.5x	2 & 3	1 & 2	2 & 3	2 & 3
200MHz	66MHz	3x	2 & 3	1 & 2	2 & 3	1 & 2

Note: Pins designated should be in the closed position.

CPU VOLTAGE SELECTION (SINGLE)			
Voltage	JP22	JP23	JP24
3.3v	Pins 1 & 3, 2 & 4 closed	Pins 1 & 2 closed	Pins 1 & 2 closed
3.4v	Pins 1 & 3, 2 & 4 closed	Pins 1 & 2 closed	Pins 3 & 4 closed
3.5v	Pins 1 & 3, 2 & 4 closed	Pins 1 & 2 closed	Pins 5 & 6 closed

CPU VOLTAGE SELECTION (DUAL)				
Voltage	V core	JP22	JP23	JP24
3.3v	2.8v	3 & 5, 4 & 6	3 & 4	1 & 2

Note: Pins designated should be in the closed position.