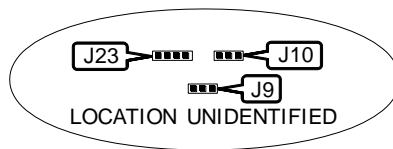
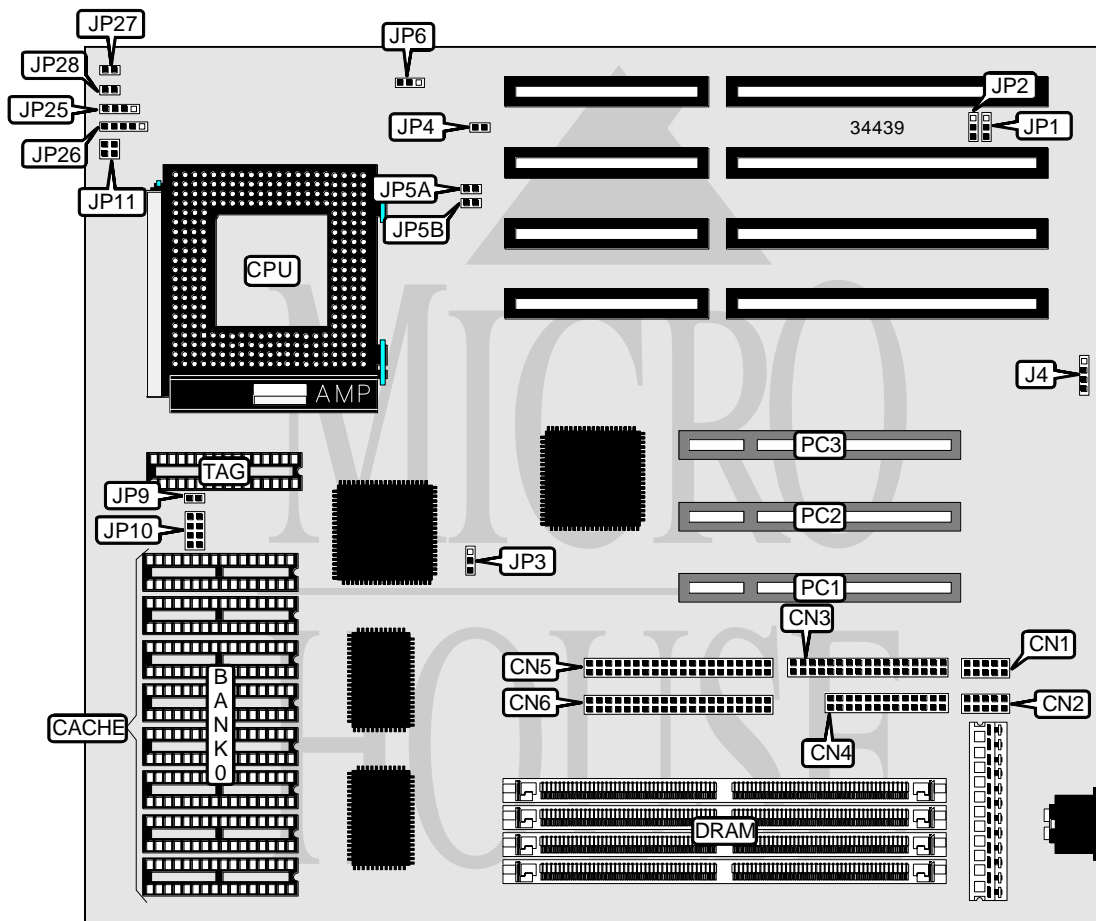


AMPTRON INTERNATIONAL, INC.

PM-7500C

Processor	Pentium
Processor Speed	75/90/100/120/133MHz
Chip Set	Intel
Video Chip Set	None
Maximum Onboard Memory	128MB (EDO supported)
Maximum Video Memory	None
Cache	256/512KB
BIOS	Award
Dimensions	254mm x 218mm
I/O Options	32-bit PCI slots (3), floppy drive interface, IDE interfaces (2), parallel port, serial ports (2)
NPU Options	None



Continued on next page...

AMPTRON INTERNATIONAL, INC.
 P M - 7 5 0 0 C

... continued from previous page

CONNECTIONS			
Purpose	Location	Purpose	Location
Serial port 2	CN1	Chassis fan power	J23
Serial port 1	CN2	Speaker	JP25
Floppy drive interface	CN3	Power LED & keylock	JP26
Parallel port	CN4	Reset switch	JP27
IDE interface 2	CN5	IDE interface LED	JP28
IDE interface 1	CN6	32-bit PCI slots	PC1 – PC3
External battery	J4		

USER CONFIGURABLE SETTINGS		
Function	Label	Position
í CMOS memory normal operation	J4	Pins 2 & 3 closed
CMOS memory clear	J4	Pins 3 & 4 closed
Battery type select external	J4	Closed
Flash BIOS voltage select 12v	JP4	Closed
Flash BIOS voltage select 5v	JP4	Open
í Factory configured - do not alter	JP9	Unidentified
í Factory configured - do not alter	JP10	Unidentified

DRAM CONFIGURATION		
Size	Bank 0	Bank 1
8MB	(2) 1M x 36	None
16MB	(2) 2M x 36	None
16MB	(2) 1M x 36	(2) 1M x 36
24MB	(2) 2M x 36	(2) 1M x 36
32MB	(2) 4M x 36	None
32MB	(2) 2M x 36	(2) 2M x 36
40MB	(2) 4M x 36	(2) 1M x 36
48MB	(2) 4M x 36	(2) 2M x 36
64MB	(2) 8M x 36	None
64MB	(2) 4M x 36	(2) 4M x 36
72MB	(2) 8M x 36	(2) 1M x 36
80MB	(2) 8M x 36	(2) 2M x 36
96MB	(2) 8M x 36	(2) 4M x 36
128MB	(2) 8M x 36	(2) 8M x 36

Note: Board accepts EDO memory. The location of the banks is unidentified.

CACHE CONFIGURATION		
Size	Bank 0	TAG
256KB	(8) 32K x 8	(1) 8K/16K/32K x 8
512KB	(8) 64K x 8	(1) 16K/32K x 8

Continued on next page...

AMPTRON INTERNATIONAL, INC.
PM-7500C

... continued from previous page

CACHE JUMPER CONFIGURATION	
Size	J9
256KB	Pins 1 & 2 closed
512KB	Pins 2 & 3 closed

CACHE VOLTAGE CONFIGURATION	
Voltage	J10
3.3v	Pins 1 & 2 closed
5v	Pins 2 & 3 closed

CPU SPEED SELECTION							
CPU speed	Clock speed	Multiplier	JP3	JP5A	JP5B	JP11A	JP11B
75MHz	50MHz	1.5x	1 & 2	Closed	Closed	Open	Open
90MHz	60MHz	1.5x	2 & 3	Open	Closed	Open	Open
100MHz	66MHz	1.5x	2 & 3	Closed	Open	Open	Open
120MHz	60MHz	2x	2 & 3	Open	Closed	Closed	Open
133MHz	66MHz	2x	2 & 3	Closed	Open	Closed	Open

Note: Pins designated should be in the closed position. The orientation of A & B on JP11 is unidentified.

CPU VOLTAGE SELECTION	
Voltage	JP6
3.3v	Pins 2 & 3 closed
3.5v	Pins 1 & 2 closed

DMA CHANNEL SELECTION		
Channel	JP1	JP2
1	Pins 1 & 2 closed	Pins 1 & 2 closed
2	Pins 2 & 3 closed	Pins 2 & 3 closed