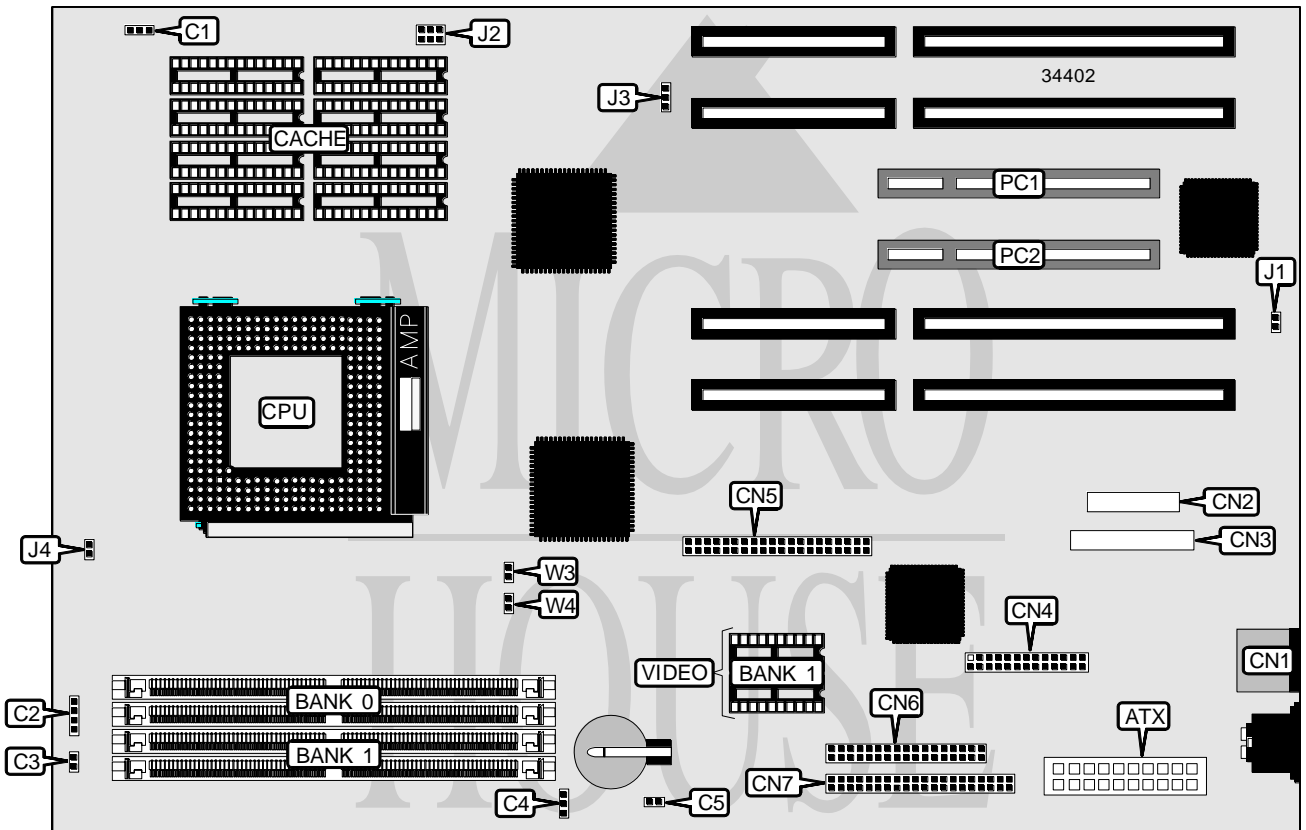


DELL COMPUTER CORPORATION DIMENSION PXXX

Processor	Pentium
Processor Speed	75/90MHz
Chip Set	VLSI
Video Chip Set	S3
Maximum Onboard Memory	128MB
Maximum Video Memory	2MB
Cache	256KB
BIOS	Unidentified
Dimensions	330mm x 218mm
I/O Options	32-bit PCI slots (2), floppy drive interface, IDE interfaces (2), parallel port, PS/2 mouse port, serial port, VGA feature connector, VGA interface, ATX power connector
NPU Options	None



Continued on next page . .

DELL COMPUTER CORPORATION
DIMENSION PXXX

... continued from previous page

CONNECTIONS			
Purpose	Location	Purpose	Location
ATX power connector	ATX	Serial port	CN2
Chassis fan power	C1	Parallel/VGA port	CN3
IDE interface LED	C2	VGA feature connector	CN4
Reset switch	C3	IDE interface 1	CN5
Chassis fan power	C4	Floppy drive interface	CN6
Soft off power supply	C5	IDE interface 2	CN7
PS/2 mouse port	CN1	32-bit PCI slots	PC1 & PC2

USER CONFIGURABLE SETTINGS		
Function	Label	Position
í Password enabled	J1	Closed
Password disabled	J1	Open
í Factory configured - do not alter	J2	Unidentified
í Factory configured - do not alter (flash BIOS recovery)	J3	Unidentified
í Factory configured - do not alter	J4	Open

DRAM CONFIGURATION		
Size	Bank 0	Bank 1
8MB	(2) 1M x 32	None
16MB	(2) 2M x 32	None
16MB	(2) 1M x 32	(2) 1M x 32
24MB	(2) 2M x 32	(2) 1M x 32
32MB	(2) 4M x 32	None
32MB	(2) 2M x 32	(2) 2M x 32
40MB	(2) 4M x 32	(2) 1M x 32
48MB	(2) 4M x 32	(2) 2M x 32
64MB	(2) 8M x 32	None
64MB	(2) 4M x 32	(2) 4M x 32
72MB	(2) 8M x 32	(2) 1M x 32
80MB	(2) 8M x 32	(2) 2M x 32
96MB	(2) 8M x 32	(2) 4M x 32
128MB	(2) 8M x 32	(2) 8M x 32

CACHE CONFIGURATION		
Size	Bank 0	Bank 1
256KB	(4) 32K x 8	(4) 32K x 8

Note: The location of banks 0 & 1 is unidentified.

Continued on next page. . .

DELL COMPUTER CORPORATION
DIMENSION PXXX

... continued from previous page

VIDEO MEMORY CONFIGURATION		
Size	Bank 0	Bank 1
1MB	1MB	None
2MB	1MB	(2) 256K x 16

Note: Bank 0 is factory installed and is not configurable. The location is unidentified.

CPU SPEED SELECTION				
CPU speed	Clock speed	Multiplier	W3	W4
75MHz	50MHz	1.5x	Closed	Closed
90MHz	60MHz	1.5x	Open	Closed