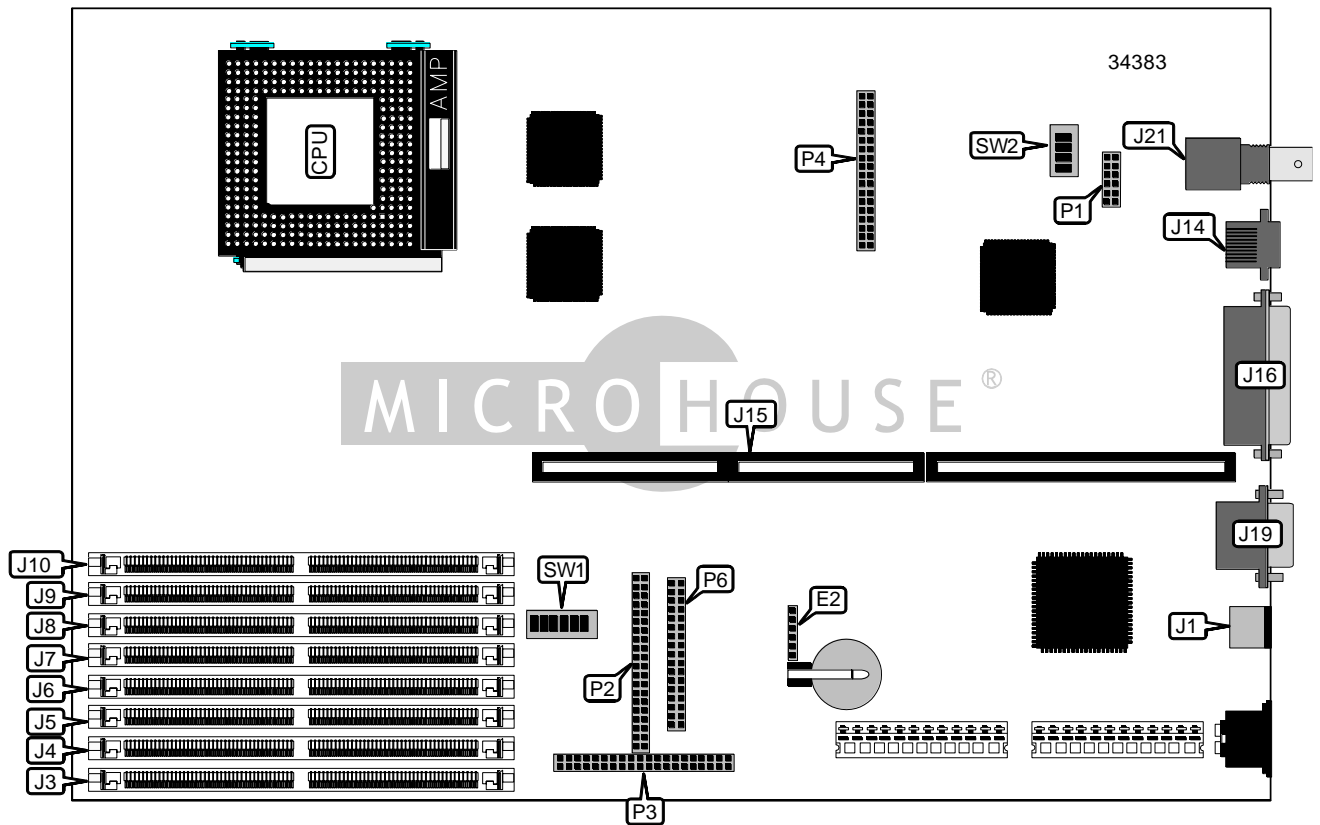


# COMPAQ COMPUTER CORPORATION DESKPRO 4000/6000 (PENTIUM PRO)

<b>Processor</b>	Pentium Pro
<b>Processor Speed</b>	180/200MHz
<b>Chip Set</b>	Unidentified
<b>Video Chip Set</b>	Cirrus Logic
<b>Maximum Onboard Memory</b>	256MB
<b>Maximum Video Memory</b>	2MB
<b>Cache</b>	256/512KB
<b>BIOS</b>	Unidentified
<b>Dimensions</b>	330mm x 218mm
<b>I/O Options</b>	Unidentified
<b>NPU Options</b>	None



*Continued on next page. . .*

COMPAQ COMPUTER CORPORATION  
 DESKPRO 4000/6000 (PENTIUM PRO)

... continued from previous page

CONNECTIONS			
Purpose	Location	Purpose	Location
IDE interface 1	P2	RJ-45 Ethernet port	J14
IDE interface 2	P3	Riser slot	J15
Floppy drive interface	P6	Parallel port	J16
100 Mbit/s upgrade module	P1, P4	Serial port 2	J19
Replacement battery	E2	Serial port 1	J19
PS/2 mouse port	J1	BNC Ethernet port	J21

USER CONFIGURABLE SETTINGS		
Function	Label	Position
í Factory configured – do not alter	J11	Unidentified
í Power on password enabled	SW1/1	Off
Power on password disabled	SW1/1	On

DRAM CONFIGURATION				
Size	Bank 0	Bank 1	Bank 2	Bank 3
16MB	(2) 2M x 36	None	None	None
32MB	(2) 2M x 36	(2) 2M x 36	None	None
32MB	(2) 4M x 36	None	None	None
48MB	(2) 2M x 36	(2) 2M x 36	(2) 2M x 36	None
64MB	(2) 2M x 36	(2) 2M x 36	(2) 2M x 36	(2) 2M x 36
64MB	(2) 4M x 36	(2) 4M x 36	None	None
64MB	(2) 8M x 36	None	None	None
96MB	(2) 4M x 36	(2) 4M x 36	(2) 4M x 36	None
128MB	(2) 4M x 36	(2) 4M x 36	(2) 4M x 36	(2) 4M x 36
128MB	(2) 8M x 36	(2) 8M x 36	None	None
192MB	(2) 8M x 36	(2) 8M x 36	(2) 8M x 36	None
256MB	(2) 8M x 36	(2) 8M x 36	(2) 8M x 36	(2) 8M x 36
256MB	(2) 16M x 36	(2) 16M x 36	None	None

CACHE CONFIGURATION
Note: The location of the cache is unidentified.

VIDEO MEMORY CONFIGURATION
Note: The location of the video memory is unidentified.

Continued on next page...

COMPAQ COMPUTER CORPORATION  
DESKPRO 4000/6000 (PENTIUM PRO)

... continued from previous page

CPU SPEED SELECTION							
CPU speed	Clock speed	Multiplier	SW1/2	SW1/3	SW1/4	SW1/5	SW1/6
180MHz	66MHz	3x	Off	On	On	Off	On
200MHz	66MHz	3x	On	On	On	Off	On

NETWORK SELECTION				
Setting	SW2/1	SW2/2	SW2/3	SW2/4
í 10MB	On	On	On	On
100MB	Off	Off	Off	Off