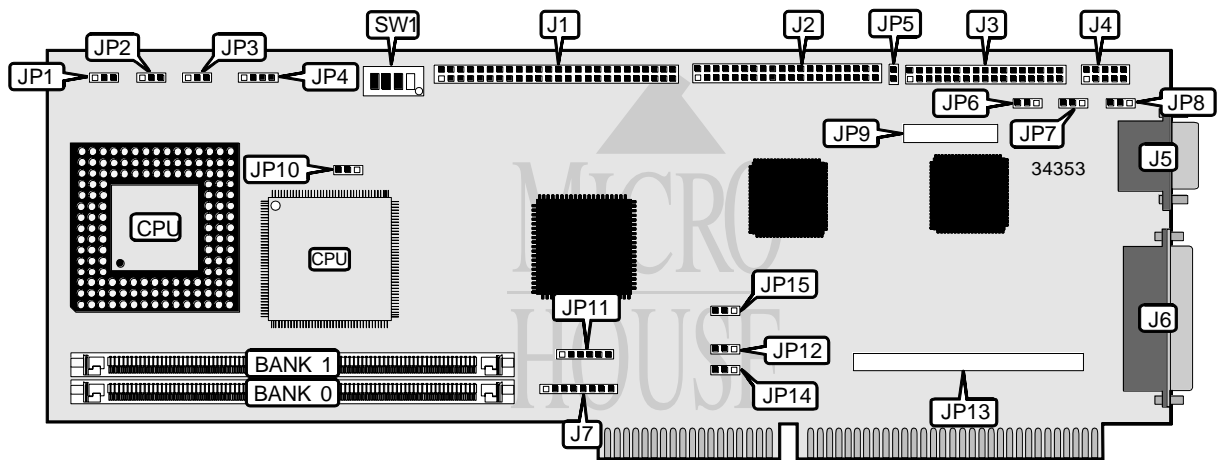


TEXAS MICROSYSTEMS, INC.
LS486/L486

Processor	80486SX/80487SX/80486DX/80486DX2
Processor Speed	33/50(internal)/66(internal)MHz
Chip Set	Unidentified
Video Chip Set	None
Maximum Onboard Memory	32MB
Maximum Video Memory	None
Cache	None
BIOS	Unidentified
Dimensions	Unidentified
I/O Options	Floppy drive interface, IDE interface, SCSI interface, parallel port, serial ports (2), video board connector
NPU Options	None



CONNECTIONS			
Purpose	Location	Purpose	Location
SCSI interface	J1	Auxiliary keyboard connector	J7
IDE interface	J2	External battery	JP4
Floppy drive interface	J3	Hard drive LED	JP5
Serial port 2	J4	Video board connector	JP9
Serial port 1	J5	Texas Micro keyboard connector	JP11
Parallel port	J6	Video board connector	JP13

Continued on next page . . .

TEXAS MICROSYSTEMS, INC.
LS486/L486

... continued from previous page

USER CONFIGURABLE SETTINGS		
Function	Label	Position
í Battery type select internal	JP4	Pins 1 & 2 closed
Battery type select external	JP4	Closed
í Watchdog timer disabled	JP12	Pins 2 & 3 closed
Watchdog timer enabled	JP12	Pins 1 & 2 closed
On board SCSI enabled	JP15	Pins 1 & 2 closed
On board SCSI disabled	JP15	Pins 2 & 3 closed
í Monitor type select color	SW1/1	On
Monitor type select monochrome	SW1/1	Off
í Flash BIOS enabled	SW1/2	Off
Flash BIOS disabled	SW1/2	On
í CMOS memory normal operation	SW1/3	Off
CMOS memory clear	SW1/3	On
í I/O address select 270H	SW1/4	Off
I/O address select 370H	SW1/4	On

DRAM CONFIGURATION		
Size	Bank 0	Bank 1
1MB	(1) 256K x 36	None
2MB	(1) 256K x 36	(1) 256K x 36
4MB	(1) 1M x 36	None
5MB	(1) 1M x 36	(1) 256K x 36
8MB	(1) 1M x 36	(1) 1M x 36
16MB	(1) 4M x 36	None
17MB	(1) 4M x 36	(1) 256K x 36
20MB	(1) 4M x 36	(1) 1M x 36
32MB	(1) 4M x 36	(1) 4M x 36

CPU TYPE SELECTION			
Type	JP1	JP2	JP3
80486SX	Pins 2 & 3 closed	Pins 1 & 2 closed	Pins 2 & 3 closed
80487SX	Pins 1 & 2 closed	Pins 1 & 2 closed	Pins 1 & 2 closed
80486DX	Pins 1 & 2 closed	Pins 2 & 3 closed	Pins 1 & 2 closed
80486DX2	Pins 1 & 2 closed	Pins 2 & 3 closed	Pins 1 & 2 closed

CPU TYPE SELECTION (80486SX ONLY)	
Multiplier	JP10
PQFP	Pins 2 & 3 closed
PGA	Pins 1 & 2 closed

Continued on next page...

TEXAS MICROSYSTEMS, INC.
LS486/L486

... continued from previous page

SERIAL PORT 2 SELECTION			
Setting	JP6	JP7	JP8
í RS232	Pins 2 & 3 closed	Pins 2 & 3 closed	Pins 2 & 3 closed
RS422	Pins 1 & 2 closed	Pins 1 & 2 closed	Pins 1 & 2 closed
RS485	Pins 1 & 2 closed	Pins 1 & 2 closed	Pins 1 & 2 closed

WATCHDOG TIMER SELECTION	
Timer	JP14
í 1.2 seconds	Pins 1 & 2 closed
150ms	Pins 2 & 3 closed
600ms	Open