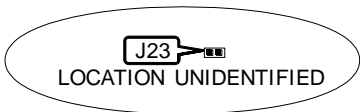
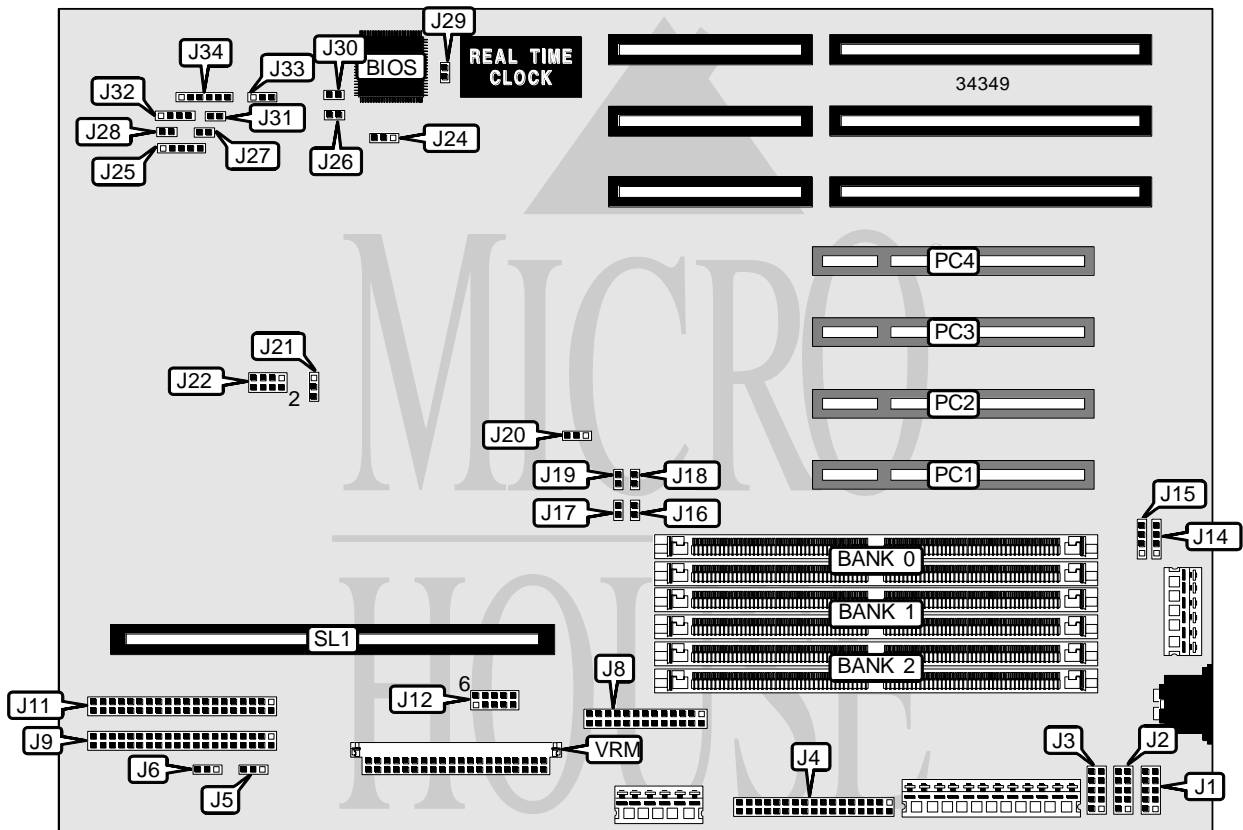


AMERICAN MEGATRENDS, INC. PEGASUS

Processor	Pentium II
Processor Speed	200/233/266/300MHz
Chip Set	Unidentified
Video Chip Set	None
Maximum Onboard Memory	768MB (EDO supported)
Maximum Video Memory	None
Cache	256/512KB (located on Pentium II CPU)
BIOS	AMI
Dimensions	330mm x 218mm
I/O Options	32-bit PCI slots (4), floppy drive interface, green PC connector, IDE interfaces (2), parallel port, PS/2 mouse interface, serial ports (2), IR connector, VRM connector, USB connectors (2), CPU Slot 1
NPU Options	None



Continued on next page. . .

AMERICAN MEGATRENDS, INC.
 PEGASUS

... continued from previous page

CONNECTIONS			
Purpose	Location	Purpose	Location
PS/2 mouse interface	J1	Power LED & keylock	J25
Serial port 2	J2	Reset switch	J27
Serial port 1	J3	Turbo LED	J28
Floppy drive interface	J4	Green PC connector	J30
Chassis fan power	J5	IDE interface LED	J31
CPU fan power	J6	Speaker	J32
Parallel port	J8	Chassis fan power	J33
IDE interface 2	J9	IR connector	J34
IDE interface 1	J11	32-bit PCI slots	PC1 – PC4
USB connector 2	J14	CPU Slot 1	SL1
USB connector 1	J15	VRM connector	VRM
Chassis door intrusion connector	J23		

USER CONFIGURABLE SETTINGS		
Function	Label	Position
í Factory configured - do not alter	J20	Unidentified
í Factory configured - do not alter	J24	Unidentified
í Factory configured - do not alter	J26	Unidentified
í CMOS memory normal operation	J29	Open
CMOS memory clear	J29	Closed

DRAM CONFIGURATION			
Size	Bank 0	Bank 1	Bank 2
8MB	(2) 1M x 36	None	None
16MB	(2) 1M x 36	(2) 1M x 36	None
16MB	(2) 2M x 36	None	None
24MB	(2) 2M x 36	(2) 1M x 36	None
24MB	(2) 1M x 36	(2) 1M x 36	(2) 1M x 36
32MB	(2) 4M x 36	None	None
32MB	(2) 2M x 36	(2) 2M x 36	None
40MB	(2) 4M x 36	(2) 1M x 36	None
48MB	(2) 4M x 36	(2) 2M x 36	None
48MB	(2) 4M x 36	(2) 1M x 36	(2) 1M x 36
56MB	(2) 4M x 36	(2) 2M x 36	(2) 1M x 36
64MB	(2) 8M x 36	None	None
64MB	(2) 4M x 36	(2) 4M x 36	None
80MB	(2) 8M x 36	(2) 2M x 36	None
80MB	(2) 8M x 36	(2) 1M x 36	(2) 1M x 36
88MB	(2) 8M x 36	(2) 2M x 36	(2) 1M x 36
96MB	(2) 8M x 36	(2) 4M x 36	None
96MB	(2) 4M x 36	(2) 4M x 36	(2) 4M x 36
96MB	(2) 8M x 36	(2) 2M x 36	(2) 2M x 36

Continued on next page...

AMERICAN MEGATRENDS, INC.
 PEGASUS

... continued from previous page

DRAM CONFIGURATION (CON'T)			
Size	Bank 0	Bank 1	Bank 2
104MB	(2) 8M x 36	(2) 4M x 36	(2) 1M x 36
112MB	(2) 8M x 36	(2) 4M x 36	(2) 2M x 36
128MB	(2) 8M x 36	(2) 4M x 36	(2) 4M x 36
128MB	(2) 16M x 36	None	None
128MB	(2) 8M x 36	(2) 8M x 36	None
136MB	(2) 8M x 36	(2) 8M x 36	(2) 1M x 36
136MB	(2) 16M x 36	(2) 1M x 36	None
144MB	(2) 16M x 36	(2) 2M x 36	None
144MB	(2) 16M x 36	(2) 1M x 36	(2) 1M x 36
160MB	(2) 16M x 36	(2) 4M x 36	None
160MB	(2) 16M x 36	(2) 2M x 36	(2) 2M x 36
168MB	(2) 16M x 36	(2) 4M x 36	(2) 1M x 36
176MB	(2) 16M x 36	(2) 4M x 36	(2) 2M x 36
192MB	(2) 16M x 36	(2) 8M x 36	None
192MB	(2) 16M x 36	(2) 4M x 36	(2) 4M x 36
200MB	(2) 16M x 36	(2) 8M x 36	(2) 1M x 36
208MB	(2) 16M x 36	(2) 8M x 36	(2) 2M x 36
224MB	(2) 16M x 36	(2) 8M x 36	(2) 4M x 36
256MB	(2) 16M x 36	(2) 16M x 36	None
256MB	(2) 16M x 36	(2) 8M x 36	(2) 8M x 36
256MB	(2) 32M x 36	None	None
264MB	(2) 16M x 36	(2) 16M x 36	(2) 1M x 36
272MB	(2) 16M x 36	(2) 16M x 36	(2) 2M x 36
288MB	(2) 16M x 36	(2) 16M x 36	(2) 4M x 36
320MB	(2) 16M x 36	(2) 16M x 36	(2) 8M x 36
384MB	(2) 16M x 36	(2) 16M x 36	(2) 16M x 36
512MB	(2) 32M x 36	(2) 32M x 36	None
520MB	(2) 32M x 36	(2) 32M x 36	(2) 1M x 36
528MB	(2) 32M x 36	(2) 32M x 36	(2) 2M x 36
544MB	(2) 32M x 36	(2) 32M x 36	(2) 4M x 36
576MB	(2) 32M x 36	(2) 32M x 36	(2) 8M x 36
640MB	(2) 32M x 36	(2) 32M x 36	(2) 16M x 36
768MB	(2) 32M x 36	(2) 32M x 36	(2) 32M x 36

Note: Board accepts EDO memory. Board also accepts x 32 SIMMs. Do not use 16M x 36 SIMMs that have more than 36 chips per SIMM.

CACHE CONFIGURATION
Note: 256KB/512KB cache is located on the Pentium II CPU.

Continued on next page...

AMERICAN MEGATRENDS, INC.
 PEGASUS

... continued from previous page

CPU SPEED SELECTION					
CPU speed	Clock speed	Multiplier	J16	J17	J18
200MHz	66MHz	3x	Closed	Open	Closed
233MHz	66MHz	3.5x	Closed	Open	Closed
266MHz	66MHz	4x	Closed	Open	Closed
300MHz	66MHz	4.5x	Closed	Open	Closed

CPU SPEED SELECTION (CON'T)					
CPU speed	Clock speed	Multiplier	J19	J21	J22
200MHz	66MHz	3x	Open	1 & 2	1 & 2, 5 & 6, 7 & 8
233MHz	66MHz	3.5x	Open	1 & 2	5 & 6, 7 & 8
266MHz	66MHz	4x	Open	1 & 2	1 & 2, 3 & 4, 7 & 8
300MHz	66MHz	4.5x	Open	1 & 2	3 & 4, 7 & 8

Note: Pins designated should be in the closed position.

CPU VOLTAGE SELECTION	
Voltage	J12
1.8v	Pins 1 & 6, 2 & 7, 4 & 9 closed
1.85v	Pins 1 & 6, 2 & 7, 4 & 9, 5 & 10 closed
1.9v	Pins 1 & 6, 2 & 7, 3 & 8 closed
1.95v	Pins 1 & 6, 2 & 7, 3 & 8, 5 & 10 closed
2.0v	Pins 1 & 6, 2 & 7, 3 & 8, 4 & 9 closed
2.05v	Pins 1 & 6, 2 & 7, 3 & 8, 4 & 9, 5 & 10 closed
2.1v	Pins 5 & 10 closed
2.2v	Pins 4 & 9 closed
2.3v	Pins 4 & 9, 5 & 10 closed
2.4v	Pins 3 & 8 closed
2.5v	Pins 3 & 8, 5 & 10 closed
2.6v	Pins 3 & 8, 4 & 9 closed
2.7v	Pins 3 & 8, 4 & 9, 5 & 10 closed
2.8v	Pins 2 & 7 closed
2.9v	Pins 2 & 7, 5 & 10 closed
3.0v	Pins 2 & 7, 4 & 9 closed
3.1v	Pins 2 & 7, 4 & 9, 5 & 10 closed
3.2v	Pins 2 & 7, 3 & 8 closed
3.3v	Pins 2 & 7, 3 & 8, 5 & 10 closed
3.4v	Pins 2 & 7, 3 & 8, 4 & 9 closed
3.5v	Pins 2 & 7, 3 & 8, 4 & 9, 5 & 10 closed