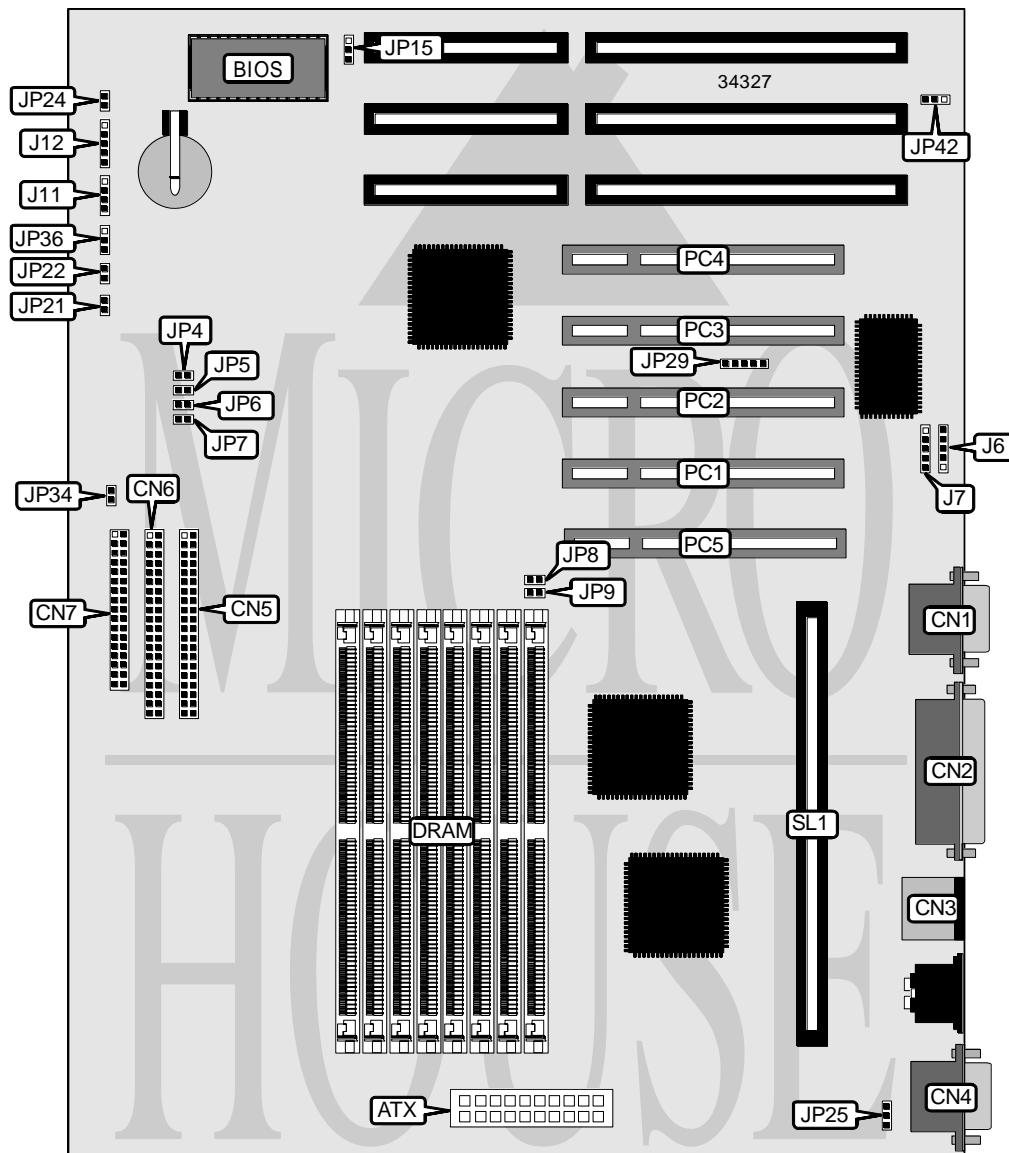


ANTEC, INC.  
M B 6 8 2 3

<b>Processor</b>	Pentium II
<b>Processor Speed</b>	233/266MHz
<b>Chip Set</b>	Intel
<b>Video Chip Set</b>	None
<b>Maximum Onboard Memory</b>	1GB (EDO supported)
<b>Maximum Video Memory</b>	None
<b>Cache</b>	256/512KB (located on Pentium II CPU)
<b>BIOS</b>	Award
<b>Dimensions</b>	305mm x 240mm
<b>I/O Options</b>	32-bit PCI slots (5), floppy drive interface, green PC connector, IDE interfaces (2), parallel port, PS/2 mouse port, serial ports (2), IR connector, USB connectors (2), ATX power connector, CPU Slot 1
<b>NPU Options</b>	None



Continued on next page. . .

... continued from previous page

CONNECTIONS			
Purpose	Location	Purpose	Location
ATX power connector	ATX	Power LED & keylock	J12
Serial port 2	CN1	IDE interface LED	JP21
Parallel port	CN2	Green PC connector	JP22
PS/2 mouse port	CN3	Reset switch	JP24
Serial port 1	CN4	Chassis fan power	JP25
IDE interface 1	CN5	IR connector	JP29
IDE interface 2	CN6	Soft off power supply	JP34
Floppy drive interface	CN7	Green PC LED	JP36
USB connector	J6	32-bit PCI slots	PC1 – PC5
USB connector	J7	CPU Slot 1	SL1
Speaker	J11		

USER CONFIGURABLE SETTINGS		
Function	Label	Position
Flash BIOS voltage select 12v	JP15	Pins 1 & 2 closed
Flash BIOS voltage select 5v	JP15	Pins 2 & 3 closed
í CMOS memory normal operation	JP42	Pins 1 & 2 closed
CMOS memory clear	JP42	Pins 2 & 3 closed

DRAM CONFIGURATION				
Size	Bank 0	Bank 1	Bank 2	Bank 3
8MB	(2) 1M x 36	None	None	None
16MB	(2) 1M x 36	(2) 1M x 36	None	None
16MB	(2) 2M x 36	None	None	None
24MB	(2) 1M x 36	(2) 1M x 36	(2) 1M x 36	None
32MB	(2) 1M x 36	(2) 1M x 36	(2) 1M x 36	(2) 1M x 36
32MB	(2) 2M x 36	(2) 2M x 36	None	None
32MB	(2) 4M x 36	None	None	None
48MB	(2) 2M x 36	(2) 2M x 36	(2) 2M x 36	None
48MB	(2) 4M x 36	(2) 2M x 36	None	None
64MB	(2) 2M x 36	(2) 2M x 36	(2) 2M x 36	(2) 2M x 36
64MB	(2) 4M x 36	(2) 4M x 36	None	None
64MB	(2) 8M x 36	None	None	None
96MB	(2) 4M x 36	(2) 4M x 36	(2) 4M x 36	None
128MB	(2) 4M x 36	(2) 4M x 36	(2) 4M x 36	(2) 4M x 36
128MB	(2) 8M x 36	(2) 8M x 36	None	None
128MB	(2) 16M x 36	None	None	None
192MB	(2) 8M x 36	(2) 8M x 36	(2) 8M x 36	None
256MB	(2) 8M x 36	(2) 8M x 36	(2) 8M x 36	(2) 8M x 36
256MB	(2) 16M x 36	(2) 16M x 36	None	None
256MB	(2) 32M x 36	None	None	None

Continued on next page. . .

ANTEC, INC.  
 MB6823

... continued from previous page

DRAM CONFIGURATION (CON'T)				
Size	Bank 0	Bank 1	Bank 2	Bank 3
384MB	(2) 16M x 36	(2) 16M x 36	(2) 16M x 36	None
512MB	(2) 16M x 36	(2) 16M x 36	(2) 16M x 36	(2) 16M x 36
512MB	(2) 32M x 36	(2) 32M x 36	None	None
768MB	(2) 32M x 36	(2) 32M x 36	(2) 32M x 36	None
1GB	(2) 32M x 36	(2) 32M x 36	(2) 32M x 36	(2) 32M x 36

Note: Board accepts EDO memory.

CACHE CONFIGURATION
Note: 256KB/512KB cache is located on the Pentium II CPU.

CPU SPEED SELECTION								
CPU speed	Clock speed	Multiplier	JP4	JP5	JP6	JP7	JP8	JP9
233MHz	66MHz	3.5x	Open	Open	Closed	Closed	Open	Closed
266MHz	66MHz	4x	Closed	Closed	Open	Closed	Open	Closed