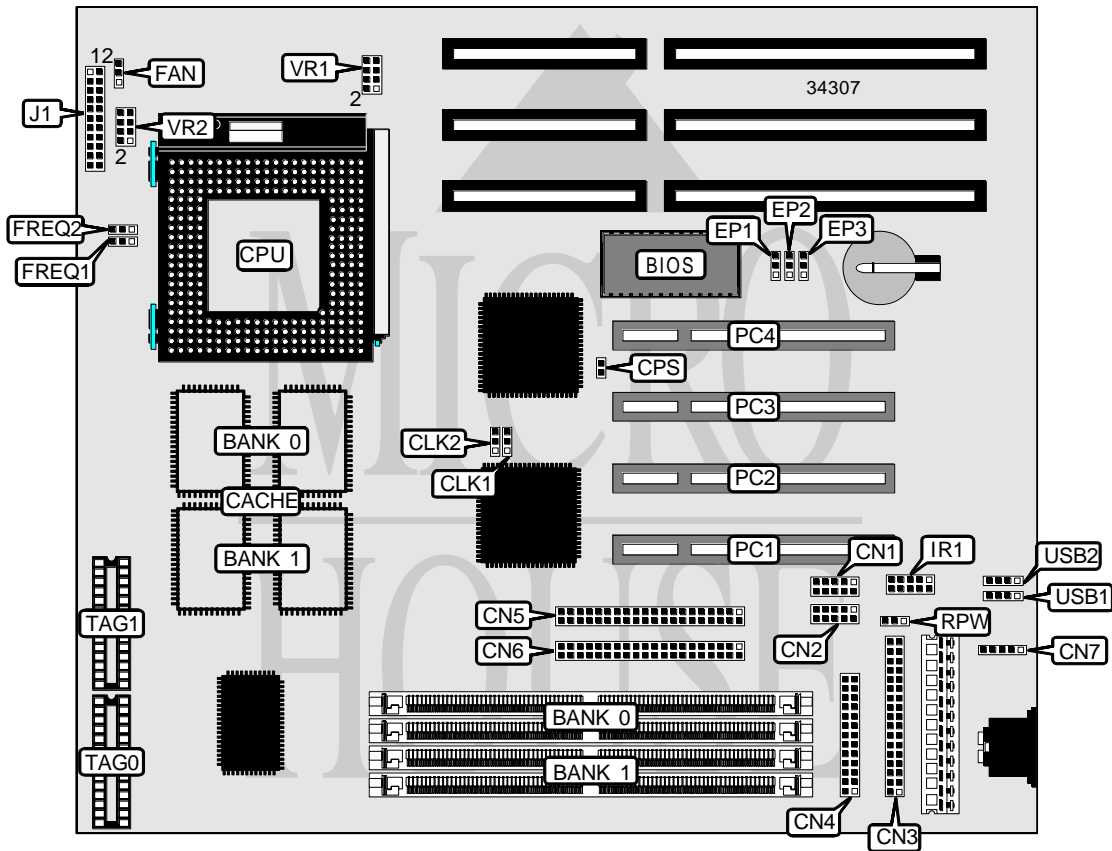


AMERICAN MEGATRENDS, INC.

APOLLO III

Processor	Pentium
Processor Speed	75/90/100/120/133/150/166/180/200MHz
Chip Set	Intel
Video Chip Set	None
Maximum Onboard Memory	256MB (EDO supported)
Maximum Video Memory	None
Cache	256/512KB
BIOS	AMI
Dimensions	254mm x 218mm
I/O Options	32-bit PCI slots (4), floppy drive interface, green PC connector, IDE interfaces (2), parallel port, PS/2 mouse interface, serial ports (2), IR connector, USB connectors (2)
NPU Options	None



Continued on next page . . .

AMERICAN MEGATRENDS, INC.
 APOLLO III

... continued from previous page

CONNECTIONS			
Purpose	Location	Purpose	Location
Serial port 2	CN1	Green PC connector	J1/pins 8 & 9
Serial port 1	CN2	Green PC LED	J1/pins 10 & 11
Floppy drive interface	CN3	Speaker	J1/pins 12 - 15
Parallel port	CN4	IDE interface LED	J1/pins 16 & 17
IDE interface 2	CN5	Remote power	J1/pins 18 & 19
IDE interface 1	CN6	Reset switch	J1/pins 20 & 21
PS/2 mouse interface	CN7	32-bit PCI slots	PC1 – PC4
Chassis fan power	FAN	Soft off power supply	RPW
IR connector	IR1	USB connector 1	USB1
Power LED & keylock	J1/pins 1 - 5	USB connector 2	USB2
Turbo LED	J1/pins 6 & 7		

USER CONFIGURABLE SETTINGS		
Function	Label	Position
í CMOS memory normal operation	CPS	Open
CMOS memory clear	CPS	Closed

DRAM CONFIGURATION		
Size	Bank 0	Bank 1
8MB	(2) 1M x 36	None
16MB	(2) 2M x 36	None
24MB	(2) 2M x 36	(2) 1M x 36
32MB	(2) 2M x 36	(2) 2M x 36
40MB	(2) 4M x 36	(2) 1M x 36
48MB	(2) 4M x 36	(2) 2M x 36
64MB	(2) 8M x 36	None
64MB	(2) 4M x 36	(2) 4M x 36
72MB	(2) 8M x 36	(2) 1M x 36
80MB	(2) 8M x 36	(2) 2M x 36
96MB	(2) 8M x 36	(2) 4M x 36
128MB	(2) 8M x 36	(2) 8M x 36
128MB	(2) 16M x 36	None
136MB	(2) 16M x 36	(2) 1M x 36
144MB	(2) 16M x 36	(2) 2M x 36
160MB	(2) 16M x 36	(2) 4M x 36
192MB	(2) 16M x 36	(2) 8M x 36
256MB	(2) 16M x 36	(2) 16M x 36

Note: Board accepts EDO memory.

Continued on next page...

AMERICAN MEGATRENDS, INC.
 APOLLO III

... continued from previous page

CACHE CONFIGURATION				
Size	Bank 0	Bank 1	TAG 0	TAG 1
256KB	(2) 32K x 32	None	(1) 8K x 8	None
512KB	(2) 32K x 32	(2) 32K x 32	(1) 16K x 8	(1) 16K x 8

CPU SPEED SELECTION						
CPU speed	Clock speed	Multiplier	CLK1	CLK2	FREQ1	FREQ2
75MHz	50MHz	1.5x	2 & 3	2 & 3	1 & 2	1 & 2
90MHz	60MHz	1.5x	2 & 3	1 & 2	1 & 2	1 & 2
100MHz	66MHz	1.5x	1 & 2	2 & 3	1 & 2	1 & 2
120MHz	60MHz	2x	2 & 3	1 & 2	2 & 3	1 & 2
133MHz	66MHz	2x	1 & 2	2 & 3	2 & 3	1 & 2
150MHz	60MHz	2.5x	2 & 3	1 & 2	2 & 3	2 & 3
166MHz	66MHz	2.5x	1 & 2	2 & 3	2 & 3	2 & 3
180MHz	60MHz	3x	2 & 3	1 & 2	1 & 2	2 & 3
200MHz	66MHz	3x	1 & 2	2 & 3	1 & 2	2 & 3

Note: Pins designated should be in the closed position.

CPU VOLTAGE SELECTION (SINGLE)		
Voltage	VR1	VR2
3.3v	Pins 3 & 4 closed	Pins 1 & 2, 3 & 4 closed
3.49v	Pins 1 & 2 closed	Pins 1 & 2, 3 & 4 closed

CPU VOLTAGE SELECTION (DUAL)		
Voltage	VR1	VR2
2.8v	Pins 5 & 6 closed	Pins 5 & 6, 7 & 8 closed
3.3v	Pins 5 & 6 closed	Pins 5 & 6, 7 & 8 closed

FLASH BIOS SELECTION			
Type	EP1	EP2	EP3
AMD 28F020	Open	Pins 1 & 2 closed	Pins 2 & 3 closed
Intel 28F001BX-T	Pins 1 & 2 closed	Pins 1 & 2 closed	Open
Intel 28F010	Pins 1 & 2 closed	Pins 2 & 3 closed	Open
í SST 29EE010	Pins 2 & 3 closed	Pins 2 & 3 closed	Open
SST 29EE020	Open	Pins 2 & 3 closed	Pins 2 & 3 closed