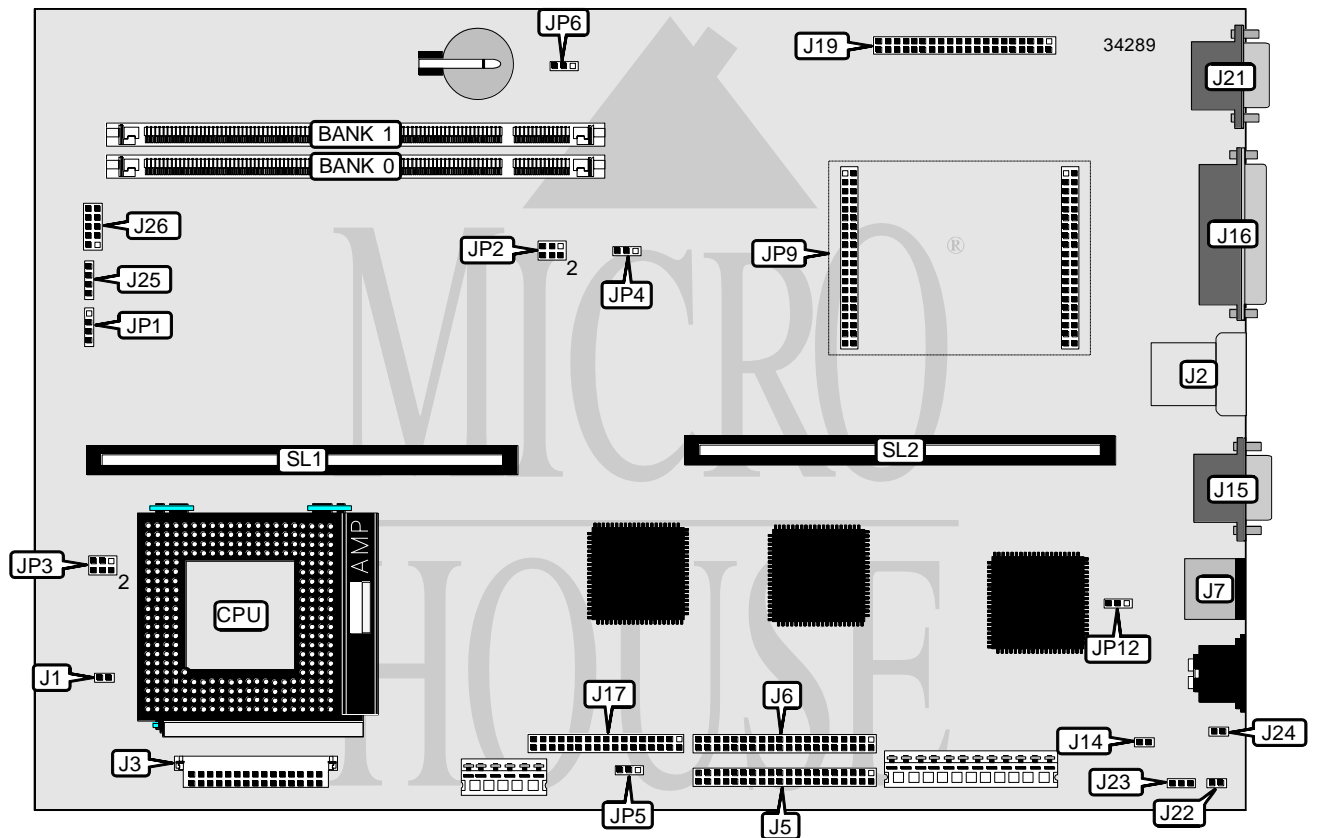


IBM CORPORATION

APTIVA 2161

Processor	Pentium
Processor Speed	133/166/200MHz
Chip Set	Unidentified
Video Chip Set	Unidentified
Maximum Onboard Memory	64MB (EDO supported)
Maximum Video Memory	4MB
Cache	256/512KB
BIOS	Unidentified
Dimensions	330mm x 218mm
I/O Options	Floppy drive interface, IDE interfaces (2), parallel port, PS/2 mouse port, serial port, VESA feature connector, VGA port, riser slot, cache slot, VRM connector, USB connector, wake up on ring connector
NPU Options	None



Continued on next page...

IBM CORPORATION
 APTIVA 2161

... continued from previous page

CONNECTIONS			
Purpose	Location	Purpose	Location
Chassis fan power	J1	VESA feature connector	J19
USB connector	J2	VGA port	J21
VRM connector	J3	Soft off power supply	J22
IDE interface 1	J5	Auxiliary 5v connector	J23
IDE interface 2	J6	Wake up on ring connector	J24
PS/2 mouse port	J7	IDE interface LED	J25
Speaker power	J14	Speaker	JP1
Serial port	J15	Cache slot	SL1
Parallel port	J16	Riser slot	SL2
Floppy drive interface	J17		

USER CONFIGURABLE SETTINGS		
Function	Label	Position
í Factory configured - do not alter	J26	Open
Flash BIOS write protect disabled	JP4	Pins 1 & 2 closed
Flash BIOS write protect enabled	JP4	Pins 2 & 3 closed
Floppy drive write protect disabled	JP5	Pins 1 & 2 closed
Floppy drive write protect enabled	JP5	Pins 2 & 3 closed
í CMOS memory normal operation	JP6	Pins 1 & 2 closed
CMOS memory clear	JP6	Pins 2 & 3 closed
Wake up on ring	JP12	Pins 1 & 2 closed
Wake up on ring over serial port only	JP12	Pins 2 & 3 closed

DIMM CONFIGURATION		
Size	Bank 0	Bank 1
8MB	(1) 1M x 64	None
16MB	(1) 2M x 64	None
16MB	(1) 1M x 64	(1) 1M x 64
24MB	(1) 2M x 64	(1) 1M x 64
32MB	(1) 4M x 64	None
32MB	(1) 2M x 64	(1) 2M x 64
40MB	(1) 4M x 64	(1) 1M x 64
48MB	(1) 4M x 64	(1) 2M x 64
64MB	(1) 4M x 64	(1) 4M x 64

CACHE CONFIGURATION	
Size	SL1
256KB	256KB module installed
512KB	512KB module installed

Continued on next page...

IBM CORPORATION
 APTIVA 2161

... continued from previous page

VIDEO MEMORY CONFIGURATION		
Size	Bank 0	JP9
2MB	2MB	Not installed
4MB	2MB	2MB module installed

Note: Bank 0 is factory installed and is not configurable. The location is unidentified.

CPU SPEED SELECTION				
CPU speed	Clock speed	Multiplier	JP2	JP3
133MHz	66MHz	2x	1 & 3, 2 & 4	1 & 3, 4 & 6
166MHz	66MHz	2.5x	1 & 3, 2 & 4	1 & 3, 2 & 4
200MHz	66MHz	3x	1 & 3, 2 & 4	2 & 4, 3 & 5

Note: Pins designated should be in the closed position.