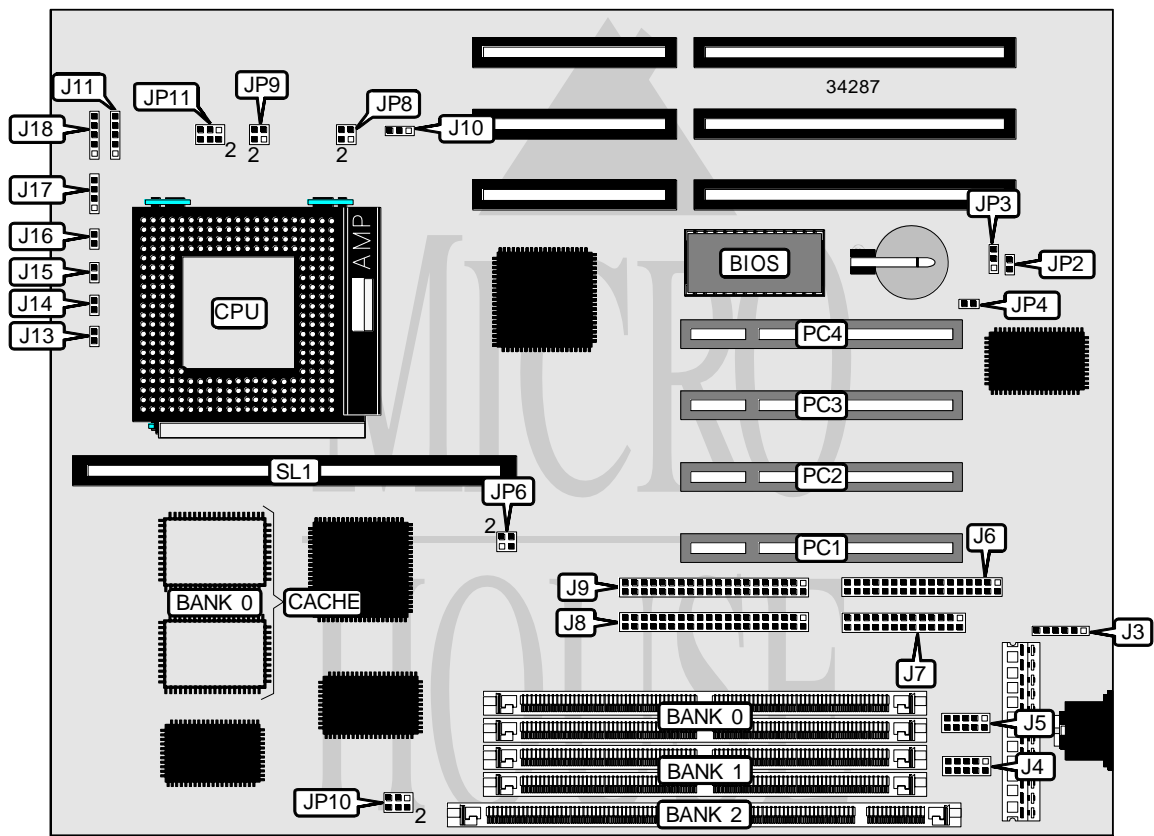


DIAMOND FLOWER, INC. G586IPV (REV. B+)

Processor	CX M1/AM K5/Pentium
Processor Speed	75/90/100/120/133/150/166/200MHz
Chip Set	Intel
Video Chip Set	None
Maximum Onboard Memory	128MB (EDO supported)
Maximum Video Memory	None
Cache	256/512KB
BIOS	Award
Dimensions	250mm x 220mm
I/O Options	32-bit PCI slots (4), floppy drive interface, green PC connector, IDE interfaces (2), parallel port, PS/2 mouse interface, serial ports (2), cache slot, IR connector
NPU Options	None



Continued on next page. . .

DIAMOND FLOWER, INC.
G5861PV (REV. B+)

... continued from previous page

CONNECTIONS			
Purpose	Location	Purpose	Location
PS/2 mouse interface	J3	IDE interface LED	J13
Serial port 1	J4	Green PC LED	J14
Serial port 2	J5	Green PC connector	J15
Floppy drive interface	J6	Reset switch	J16
Parallel port	J7	Speaker	J17
IDE interface 1	J8	Power LED & keylock	J18
IDE interface 2	J9	32-bit PCI slots	PC1 – PC4
Chassis fan power	J10	Cache slot	SL1
IR connector	J11		

USER CONFIGURABLE SETTINGS		
Function	Label	Position
í Factory configured - do not alter	JP2	Unidentified
í Monitor type select color	JP3	Pins 1 & 2 closed
Monitor type select monochrome	JP3	Pins 2 & 3 closed
í Factory configured - do not alter	JP4	Unidentified
í Factory configured - do not alter	JP10	Unidentified

DIMM/DRAM CONFIGURATION			
Size	Bank 0	Bank 1	Bank 2
8MB	None	None	(1) 1M x 64
8MB	(2) 1M x 36	None	None
16MB	None	None	(1) 2M x 64
16MB	(2) 1M x 36	None	(1) 1M x 64
16MB	(2) 2M x 36	None	None
16MB	(2) 1M x 36	(2) 1M x 36	None
24MB	(2) 2M x 36	None	(1) 1M x 64
24MB	(2) 1M x 36	None	(1) 2M x 64
24MB	(2) 2M x 36	(2) 1M x 36	None
32MB	(2) 2M x 36	None	(1) 2M x 64
32MB	(2) 4M x 36	None	None
32MB	(2) 2M x 36	(2) 2M x 36	None
40MB	(2) 4M x 36	None	(1) 1M x 64
40MB	(2) 4M x 36	(2) 1M x 36	None
48MB	(2) 4M x 36	None	(1) 2M x 64
48MB	(2) 4M x 36	(2) 2M x 36	None
64MB	(2) 8M x 36	None	None
64MB	(2) 4M x 36	(2) 4M x 36	None
72MB	(2) 8M x 36	None	(1) 1M x 64

Continued on next page. . .

DIAMOND FLOWER, INC.
G5861PV (REV. B+)

... continued from previous page

DIMM/DRAM CONFIGURATION (CON'T)			
Size	Bank 0	Bank 1	Bank 2
72MB	(2) 8M x 36	(2) 1M x 36	None
80MB	(2) 8M x 36	None	(1) 2M x 64
80MB	(2) 8M x 36	(2) 2M x 36	None
96MB	(2) 8M x 36	(2) 4M x 36	None
128MB	(2) 8M x 36	(2) 8M x 36	None

Note: Board accepts EDO memory. Board also accepts x 32 SIMMs. Banks 0 & 1 are interchangeable.

CACHE CONFIGURATION		
Size	Bank 0	SL1
256KB	(2) 32K x 32	Not installed
512KB	(2) 32K x 32	256KB module installed
512KB	(2) 64K x 32	Not installed

CPU SPEED SELECTION (CYRIX)				
CPU speed	Clock speed	Multiplier	JP6	JP8
120MHz	50MHz	2x	1 & 2, 3 & 4	1 & 2
133MHz	55MHz	2x	Open	1 & 2
150MHz	60MHz	2x	1 & 2	1 & 2
166MHz	66MHz	2x	3 & 4	1 & 2

Note: Pins designated should be in the closed position.

CPU SPEED SELECTION (AMD)				
CPU speed	Clock speed	Multiplier	JP6	JP8
75MHz	50MHz	1.5x	1 & 2, 3 & 4	Open
90MHz	60MHz	1.5x	1 & 2	Open
100MHz	66MHz	1.5x	3 & 4	Open

Note: Pins designated should be in the closed position.

CPU SPEED SELECTION (INTEL)				
CPU speed	Clock speed	Multiplier	JP6	JP8
75MHz	50MHz	1.5x	1 & 2, 3 & 4	Open
90MHz	60MHz	1.5x	1 & 2	Open
100MHz	66MHz	1.5x	3 & 4	Open
120MHz	60MHz	2x	1 & 2	1 & 2
133MHz	66MHz	2x	3 & 4	1 & 2
150MHz	60MHz	2.5x	1 & 2	1 & 2, 3 & 4
166MHz	66MHz	2.5x	3 & 4	1 & 2, 3 & 4
200MHz	66MHz	3x	3 & 4	3 & 4

Note: Pins designated should be in the closed position.

Continued on next page...

DIAMOND FLOWER, INC.
G586IPV (REV. B+)

... continued from previous page

CPU VOLTAGE SELECTION		
Voltage	JP9	JP11
2.5v	Pins 1 & 2 closed	Pins 1 & 3, 2 & 4 closed
2.8v	Pins 1 & 2 closed	Pins 1 & 3, 2 & 4 closed
2.9v	Pins 1 & 2 closed	Pins 1 & 3, 2 & 4 closed
3.3v	Pins 1 & 2 closed	Pins 3 & 5, 4 & 6 closed
3.5v	Pins 3 & 4 closed	Pins 3 & 5, 4 & 6 closed