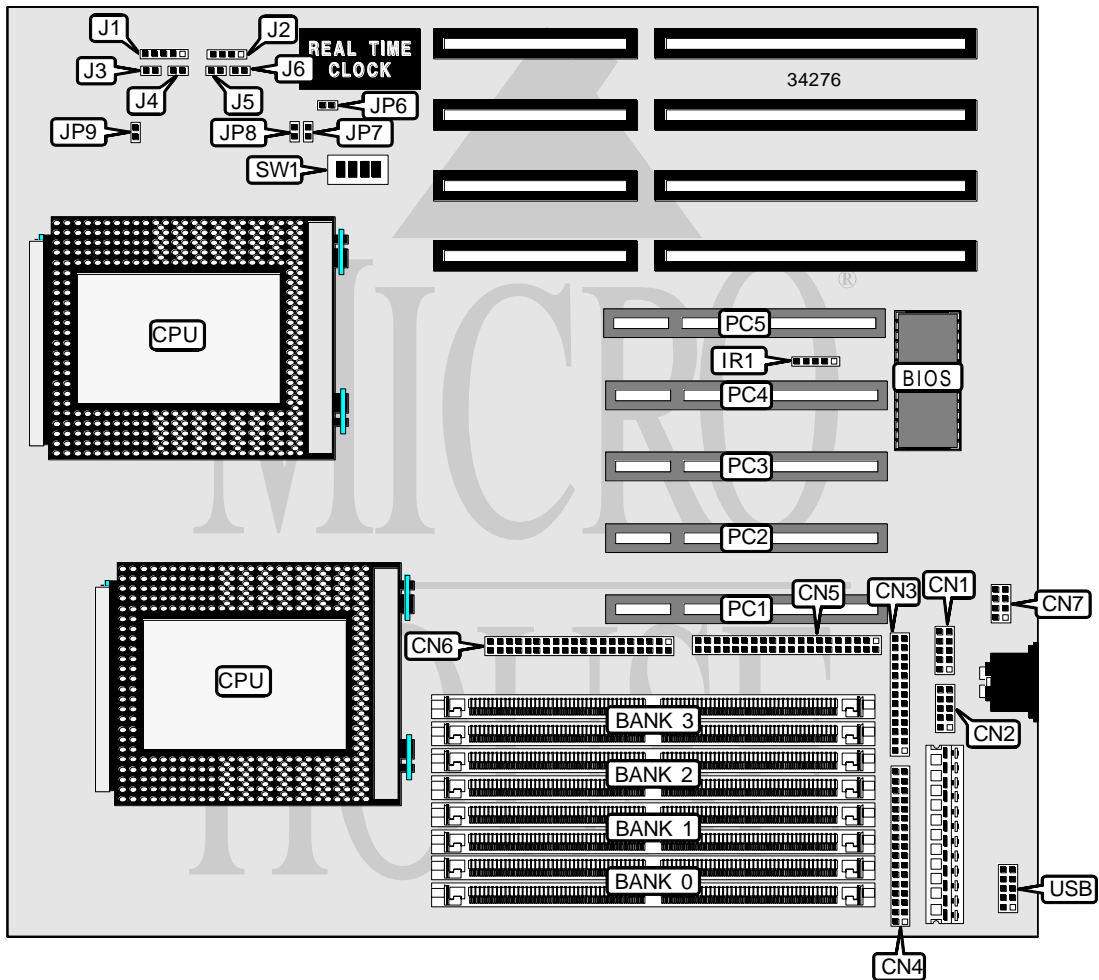


# ACTIVEI SYSTEMS, INC. INDEPENDENCE

<b>Processor</b>	Pentium Pro
<b>Processor Speed</b>	150/166/180/200MHz
<b>Chip Set</b>	Intel
<b>Video Chip Set</b>	None
<b>Maximum Onboard Memory</b>	1GB (EDO supported)
<b>Maximum Video Memory</b>	None
<b>Cache</b>	256/512KB (located on Pentium Pro CPU)
<b>BIOS</b>	AMI
<b>Dimensions</b>	254mm x 218mm
<b>I/O Options</b>	32-bit PCI slots (5), floppy drive interface, green PC connector, IDE interfaces (2), parallel port, PS/2 mouse interface, serial ports (2), IR connector, USB connector
<b>NPU Options</b>	None



*Continued on next page . . .*

ACTIVEI SYSTEMS, INC.  
INDEPENDENCE

... continued from previous page

CONNECTIONS			
Purpose	Location	Purpose	Location
Serial port 2	CN1	Speaker	J2
Serial port 1	CN2	Green PC connector	J3
Parallel port	CN3	Turbo LED	J4
Floppy drive interface	CN4	Reset switch	J5
IDE interface 1	CN5	IDE interface LED	J6
IDE interface 2	CN6	Temperature buzzer	JP9
PS/2 mouse interface	CN7	32-bit PCI slots	PC1 – PC5
IR connector	IR	USB connector	USB
Power LED & keylock	J1		

USER CONFIGURABLE SETTINGS		
Function	Label	Position
í CMOS memory normal operation	JP6	Open
CMOS memory clear	JP6	Closed

DRAM CONFIGURATION				
Size	Bank 0	Bank 1	Bank 2	Bank 3
8MB	(2) 1M x 36	None	None	None
16MB	(2) 1M x 36	(2) 1M x 36	None	None
16MB	(2) 2M x 36	None	None	None
24MB	(2) 1M x 36	(2) 1M x 36	(2) 1M x 36	None
24MB	(2) 1M x 36	(2) 2M x 36	None	None
24MB	(2) 2M x 36	(2) 1M x 36	None	None
32MB	(2) 1M x 36	(2) 1M x 36	(2) 1M x 36	(2) 1M x 36
32MB	(2) 2M x 36	(2) 1M x 36	(2) 1M x 36	None
32MB	(2) 2M x 36	(2) 2M x 36	None	None
32MB	(2) 4M x 36	None	None	None
40MB	(2) 1M x 36	(2) 2M x 36	(2) 2M x 36	None
40MB	(2) 1M x 36	(2) 4M x 36	None	None
40MB	(2) 2M x 36	(2) 1M x 36	(2) 1M x 36	(2) 1M x 36
40MB	(2) 4M x 36	(2) 1M x 36	None	None
48MB	(2) 2M x 36	(2) 2M x 36	(2) 2M x 36	None
48MB	(2) 2M x 36	(2) 4M x 36	None	None
48MB	(2) 4M x 36	(2) 1M x 36	(2) 1M x 36	None
48MB	(2) 4M x 36	(2) 2M x 36	None	None
56MB	(2) 1M x 36	(2) 2M x 36	(2) 2M x 36	(2) 2M x 36
56MB	(2) 4M x 36	(2) 1M x 36	(2) 1M x 36	(2) 1M x 36
64MB	(2) 4M x 36	(2) 2M x 36	(2) 2M x 36	None
64MB	(2) 4M x 36	(2) 4M x 36	None	None
64MB	(2) 8M x 36	None	None	None
72MB	(2) 1M x 36	(2) 4M x 36	(2) 4M x 36	None
72MB	(2) 1M x 36	(2) 8M x 36	None	None
72MB	(2) 8M x 36	(2) 1M x 36	None	None

Continued on next page...

ACTIVEI SYSTEMS, INC.  
INDEPENDENCE

... continued from previous page

DRAM CONFIGURATION (CON'T)				
Size	Bank 0	Bank 1	Bank 2	Bank 3
80MB	(2) 2M x 36	(2) 4M x 36	(2) 4M x 36	None
80MB	(2) 2M x 36	(2) 8M x 36	None	None
80MB	(2) 4M x 36	(2) 2M x 36	(2) 2M x 36	(2) 2M x 36
80MB	(2) 8M x 36	(2) 1M x 36	(2) 1M x 36	None
80MB	(2) 8M x 36	(2) 2M x 36	None	None
88MB	(2) 8M x 36	(2) 1M x 36	(2) 1M x 36	(2) 1M x 36
96MB	(2) 4M x 36	(2) 4M x 36	(2) 4M x 36	None
96MB	(2) 4M x 36	(2) 8M x 36	None	None
96MB	(2) 8M x 36	(2) 2M x 36	(2) 2M x 36	None
96MB	(2) 8M x 36	(2) 4M x 36	None	None
104MB	(2) 1M x 36	(2) 4M x 36	(2) 4M x 36	(2) 4M x 36
112MB	(2) 2M x 36	(2) 4M x 36	(2) 4M x 36	(2) 4M x 36
112MB	(2) 8M x 36	(2) 2M x 36	(2) 2M x 36	(2) 2M x 36
128MB	(2) 4M x 36	(2) 4M x 36	(2) 4M x 36	(2) 4M x 36
128MB	(2) 8M x 36	(2) 4M x 36	(2) 4M x 36	None
128MB	(2) 8M x 36	(2) 8M x 36	None	None
128MB	(2) 16M x 36	None	None	None
136MB	(2) 1M x 36	(2) 8M x 36	(2) 8M x 36	None
136MB	(2) 16M x 36	(2) 1M x 36	None	None
144MB	(2) 2M x 36	(2) 8M x 36	(2) 8M x 36	None
144MB	(2) 2M x 36	(2) 16M x 36	None	None
144MB	(2) 16M x 36	(2) 1M x 36	(2) 1M x 36	None
144MB	(2) 16M x 36	(2) 2M x 36	None	None
152MB	(2) 16M x 36	(2) 1M x 36	(2) 1M x 36	(2) 1M x 36
160MB	(2) 4M x 36	(2) 8M x 36	(2) 8M x 36	None
160MB	(2) 4M x 36	(2) 16M x 36	None	None
160MB	(2) 8M x 36	(2) 4M x 36	(2) 4M x 36	(2) 4M x 36
160MB	(2) 16M x 36	(2) 2M x 36	(2) 2M x 36	None
160MB	(2) 16M x 36	(2) 4M x 36	None	None
176MB	(2) 16M x 36	(2) 2M x 36	(2) 2M x 36	(2) 2M x 36
192MB	(2) 8M x 36	(2) 8M x 36	(2) 8M x 36	None
192MB	(2) 8M x 36	(2) 16M x 36	None	None
192MB	(2) 16M x 36	(2) 4M x 36	(2) 4M x 36	None
192MB	(2) 16M x 36	(2) 8M x 36	None	None
200MB	(2) 1M x 36	(2) 8M x 36	(2) 8M x 36	(2) 8M x 36
208MB	(2) 2M x 36	(2) 8M x 36	(2) 8M x 36	(2) 8M x 36
224MB	(2) 4M x 36	(2) 8M x 36	(2) 8M x 36	(2) 8M x 36
224MB	(2) 16M x 36	(2) 4M x 36	(2) 4M x 36	(2) 4M x 36
256MB	(2) 8M x 36	(2) 8M x 36	(2) 8M x 36	(2) 8M x 36
256MB	(2) 32M x 36	None	None	None
256MB	(2) 16M x 36	(2) 8M x 36	(2) 8M x 36	None
256MB	(2) 16M x 36	(2) 16M x 36	None	None

Continued on next page. . .

ACTIVEI SYSTEMS, INC.  
INDEPENDENCE

... continued from previous page

DRAM CONFIGURATION (CON'T)				
Size	Bank 0	Bank 1	Bank 2	Bank 3
264MB	(2) 1M x 36	(2) 16M x 36	(2) 16M x 36	None
264MB	(2) 32M x 36	(2) 1M x 36	None	None
272MB	(2) 32M x 36	(2) 1M x 36	(2) 1M x 36	None
272MB	(2) 32M x 36	(2) 2M x 36	None	None
280MB	(2) 32M x 36	(2) 1M x 36	(2) 1M x 36	(2) 1M x 36
288MB	(2) 4M x 36	(2) 16M x 36	(2) 16M x 36	None
288MB	(2) 32M x 36	(2) 2M x 36	(2) 2M x 36	None
288MB	(2) 32M x 36	(2) 4M x 36	None	None
304MB	(2) 32M x 36	(2) 2M x 36	(2) 2M x 36	(2) 2M x 36
320MB	(2) 8M x 36	(2) 16M x 36	(2) 16M x 36	None
320MB	(2) 32M x 36	(2) 4M x 36	(2) 4M x 36	None
320MB	(2) 32M x 36	(2) 8M x 36	None	None
320MB	(2) 16M x 36	(2) 8M x 36	(2) 8M x 36	(2) 8M x 36
352MB	(2) 32M x 36	(2) 4M x 36	(2) 4M x 36	(2) 4M x 36
384MB	(2) 32M x 36	(2) 8M x 36	(2) 8M x 36	None
384MB	(2) 32M x 36	(2) 16M x 36	None	None
384MB	(2) 16M x 36	(2) 16M x 36	(2) 16M x 36	None
400MB	(2) 2M x 36	(2) 16M x 36	(2) 16M x 36	(2) 16M x 36
416MB	(2) 4M x 36	(2) 16M x 36	(2) 16M x 36	(2) 16M x 36
448MB	(2) 32M x 36	(2) 8M x 36	(2) 8M x 36	(2) 8M x 36
512MB	(2) 32M x 36	(2) 16M x 36	(2) 16M x 36	None
512MB	(2) 32M x 36	(2) 32M x 36	None	None
512MB	(2) 16M x 36	(2) 16M x 36	(2) 16M x 36	(2) 16M x 36
640MB	(2) 32M x 36	(2) 16M x 36	(2) 16M x 36	(2) 16M x 36
768MB	(2) 32M x 36	(2) 32M x 36	(2) 32M x 36	None
1GB	(2) 32M x 36	(2) 32M x 36	(2) 32M x 36	(2) 32M x 36

Note: Board accepts EDO memory. Board also accepts x 32 SIMMs.

CACHE CONFIGURATION
Note: 256KB/512KB cache is located on the Pentium Pro CPU.

CPU SPEED SELECTION						
CPU speed	Clock speed	Multiplier	SW1/1	SW1/2	SW1/3	SW1/4
150MHz	60MHz	2.5x	On	Off	On	Off
166MHz	66MHz	2.5x	On	Off	Off	On
180MHz	60MHz	3x	Off	On	On	Off
200MHz	66MHz	3x	Off	On	Off	On

TEMPERATURE SELECTION		
Setting	JP7	JP8
Overheat protection disabled	Open	Open
When temp is > 50C, CPU will stop	Closed	Open
When temp is > 50C, system will enter green mode	Closed	Closed