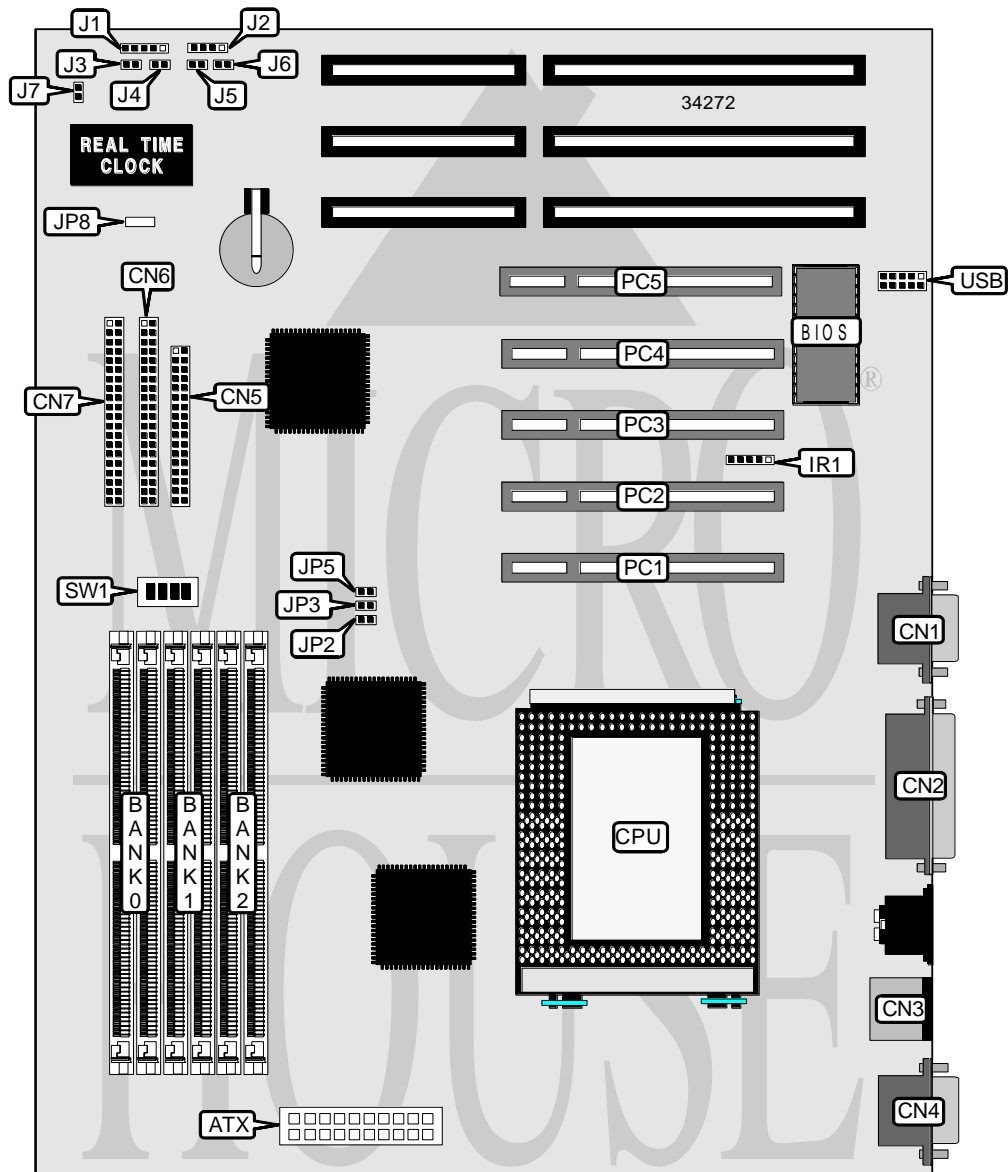


ACTIVEI SYSTEMS, INC. STONEHENGE

Processor	Pentium Pro
Processor Speed	150/166/180/200MHz
Chip Set	Intel
Video Chip Set	None
Maximum Onboard Memory	768MB (EDO supported)
Maximum Video Memory	None
Cache	256/512KB (located on Pentium Pro CPU)
BIOS	AMI
Dimensions	305mm x 244mm
I/O Options	32-bit PCI slots (5), floppy drive interface, green PC connector, IDE interfaces (2), parallel port, PS/2 mouse port, serial ports (2), IR connector, USB connector, ATX power connector
NPU Options	None



Continued on next page . . .

ACTIVEI SYSTEMS, INC.
STONEHENGE

... continued from previous page

CONNECTIONS			
Purpose	Location	Purpose	Location
ATX power connector	ATX	Speaker	J2
Serial port 2	CN1	Green PC connector	J3
Parallel port	CN2	Turbo LED	J4
PS/2 mouse port	CN3	Reset switch	J5
Serial port 1	CN4	IDE interface LED	J6
Floppy drive interface	CN5	Soft off power supply	J7
IDE interface 1	CN6	Temperature buzzer	JP2
IDE interface 2	CN7	32-bit PCI slots	PC1 – PC5
IR connector	IR1	USB connector	USB
Power LED & keylock	J1		

USER CONFIGURABLE SETTINGS		
Function	Label	Position
í Factory configured - do not alter (CMOS)	JP8	Unidentified

DRAM CONFIGURATION			
Size	Bank 0	Bank 1	Bank 2
8MB	(2) 1M x 36	None	None
16MB	(2) 1M x 36	(2) 1M x 36	None
16MB	(2) 2M x 36	None	None
24MB	(2) 1M x 36	(2) 1M x 36	(2) 1M x 36
24MB	(2) 1M x 36	(2) 2M x 36	None
24MB	(2) 2M x 36	(2) 1M x 36	None
32MB	(2) 2M x 36	(2) 1M x 36	(2) 1M x 36
32MB	(2) 2M x 36	(2) 2M x 36	None
32MB	(2) 4M x 36	None	None
40MB	(2) 1M x 36	(2) 2M x 36	(2) 2M x 36
40MB	(2) 1M x 36	(2) 4M x 36	None
40MB	(2) 4M x 36	(2) 1M x 36	None
48MB	(2) 2M x 36	(2) 2M x 36	(2) 2M x 36
48MB	(2) 2M x 36	(2) 4M x 36	None
48MB	(2) 4M x 36	(2) 1M x 36	(2) 1M x 36
48MB	(2) 4M x 36	(2) 2M x 36	None
64MB	(2) 4M x 36	(2) 2M x 36	(2) 2M x 36
64MB	(2) 4M x 36	(2) 4M x 36	None
64MB	(2) 8M x 36	None	None
72MB	(2) 1M x 36	(2) 4M x 36	(2) 4M x 36
72MB	(2) 1M x 36	(2) 8M x 36	None
72MB	(2) 8M x 36	(2) 1M x 36	None
80MB	(2) 2M x 36	(2) 4M x 36	(2) 4M x 36
80MB	(2) 2M x 36	(2) 8M x 36	None

Continued on next page...

ACTIVEI SYSTEMS, INC.
 STONEHENGE

... continued from previous page

DRAM CONFIGURATION (CON'T)			
Size	Bank 0	Bank 1	Bank 2
80MB	(2) 8M x 36	(2) 1M x 36	(2) 1M x 36
80MB	(2) 8M x 36	(2) 2M x 36	None
96MB	(2) 4M x 36	(2) 4M x 36	(2) 4M x 36
96MB	(2) 4M x 36	(2) 8M x 36	None
96MB	(2) 8M x 36	(2) 2M x 36	(2) 2M x 36
96MB	(2) 8M x 36	(2) 4M x 36	None
128MB	(2) 8M x 36	(2) 4M x 36	(2) 4M x 36
128MB	(2) 8M x 36	(2) 8M x 36	None
128MB	(2) 16M x 36	None	None
136MB	(2) 1M x 36	(2) 8M x 36	(2) 8M x 36
136MB	(2) 16M x 36	(2) 1M x 36	None
144MB	(2) 2M x 36	(2) 8M x 36	(2) 8M x 36
144MB	(2) 2M x 36	(2) 16M x 36	None
144MB	(2) 16M x 36	(2) 1M x 36	(2) 1M x 36
144MB	(2) 16M x 36	(2) 2M x 36	None
160MB	(2) 4M x 36	(2) 8M x 36	(2) 8M x 36
160MB	(2) 4M x 36	(2) 16M x 36	None
160MB	(2) 16M x 36	(2) 2M x 36	(2) 2M x 36
160MB	(2) 16M x 36	(2) 4M x 36	None
192MB	(2) 8M x 36	(2) 8M x 36	(2) 8M x 36
192MB	(2) 8M x 36	(2) 16M x 36	None
192MB	(2) 16M x 36	(2) 4M x 36	(2) 4M x 36
192MB	(2) 16M x 36	(2) 8M x 36	None
256MB	(2) 32M x 36	None	None
256MB	(2) 16M x 36	(2) 8M x 36	(2) 8M x 36
256MB	(2) 16M x 36	(2) 16M x 36	None
264MB	(2) 1M x 36	(2) 16M x 36	(2) 16M x 36
264MB	(2) 32M x 36	(2) 1M x 36	None
272MB	(2) 2M x 36	(2) 16M x 36	(2) 16M x 36
272MB	(2) 32M x 36	(2) 1M x 36	(2) 1M x 36
272MB	(2) 32M x 36	(2) 2M x 36	None
288MB	(2) 32M x 36	(2) 2M x 36	(2) 2M x 36
288MB	(2) 32M x 36	(2) 4M x 36	None
320MB	(2) 8M x 36	(2) 16M x 36	(2) 16M x 36
320MB	(2) 32M x 36	(2) 4M x 36	(2) 4M x 36
320MB	(2) 32M x 36	(2) 8M x 36	None
384MB	(2) 32M x 36	(2) 8M x 36	(2) 8M x 36
384MB	(2) 32M x 36	(2) 16M x 36	None
384MB	(2) 16M x 36	(2) 16M x 36	(2) 16M x 36
512MB	(2) 32M x 36	(2) 16M x 36	(2) 16M x 36
512MB	(2) 32M x 36	(2) 32M x 36	None
768MB	(2) 32M x 36	(2) 32M x 36	(2) 32M x 36

Note: Board accepts EDO memory.

Continued on next page...

ACTIVEI SYSTEMS, INC.
STONEHENGE

... continued from previous page

CACHE CONFIGURATION

Note: 256KB/512KB cache is located on the Pentium Pro CPU.

CPU SPEED SELECTION

CPU speed	Clock speed	Multiplier	SW1/1	SW1/2	SW1/3	SW1/4
150MHz	60MHz	2.5x	On	Off	On	Off
166MHz	66MHz	2.5x	On	Off	Off	On
180MHz	60MHz	3x	Off	On	On	Off
200MHz	66MHz	3x	Off	On	Off	On

TEMPERATURE SELECTION

Setting	JP3	JP5
Overheat protection disabled	Open	Open
When temp is > 50C, CPU will stop	Closed	Open
When temp is > 50C, system will enter green mode	Closed	Closed