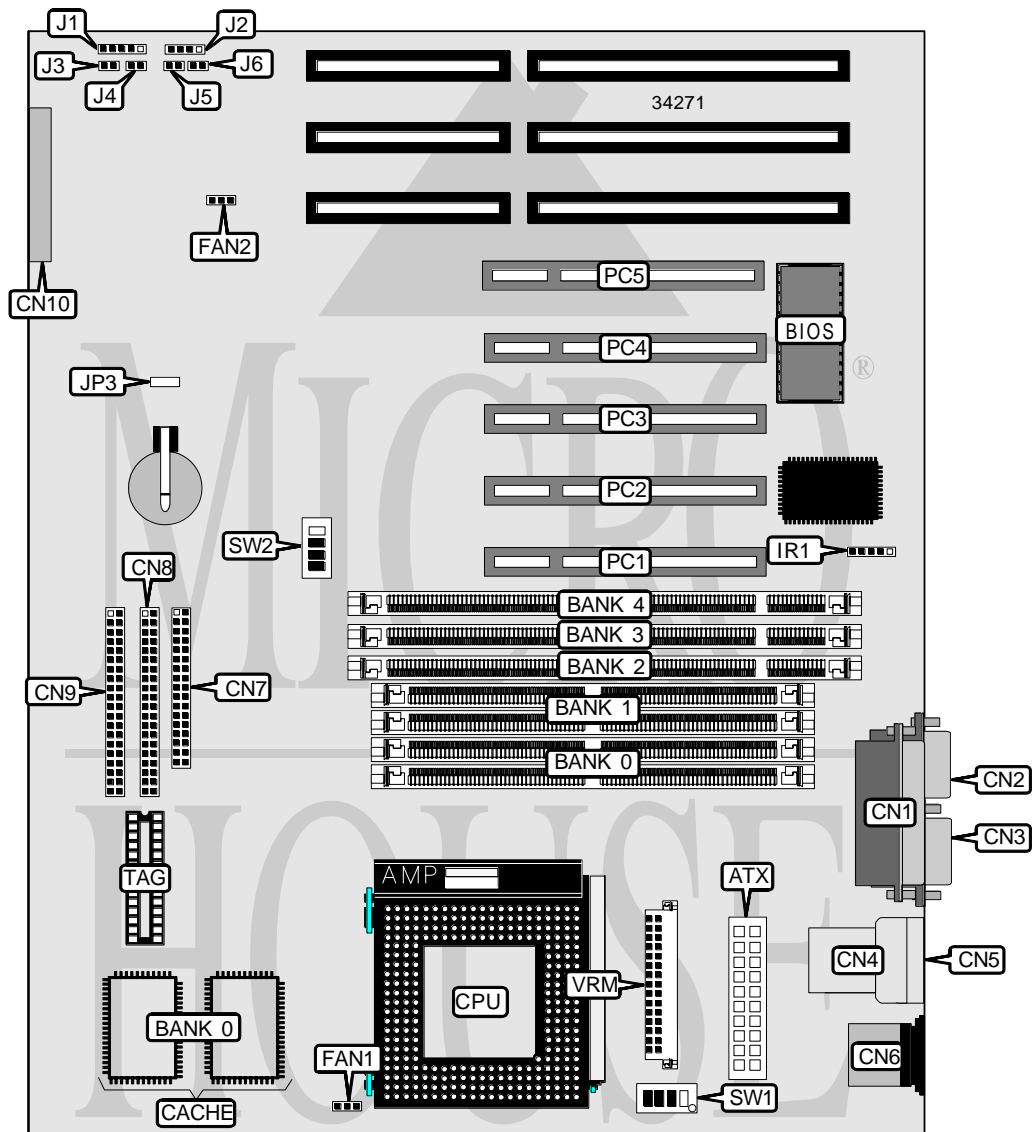


ACTIVEI SYSTEMS, INC.

ADMIRAL

Processor	CX M1/IBM/AM K5/AM K6/Pentium
Processor Speed	90/100/120/133/150/166/200/233MHz
Chip Set	Intel
Video Chip Set	None
Maximum Onboard Memory	256MB (EDO supported)
Maximum Video Memory	None
Cache	256/512KB
BIOS	Award
Dimensions	305mm x 244mm
I/O Options	32-bit PCI slots (5), floppy drive interface, IDE interfaces (2), parallel port, PS/2 mouse port, serial ports (2), IR connector, VRM connector, USB connectors (2), ATX power connector, System Management Module
NPU Options	None



Continued on next page. . .

ACTIVEI SYSTEMS, INC.
ADMIRAL

... continued from previous page

CONNECTIONS			
Purpose	Location	Purpose	Location
ATX power connector	ATX	Chassis fan power	FAN1
Parallel port	CN1	Chassis fan power	FAN2
Serial port 2	CN2	IR connector	IR1
Serial port 1	CN3	Power LED & keylock	J1
USB connector 1	CN4	Speaker	J2
USB connector 2	CN5	Soft off power supply	J3
PS/2 mouse port	CN6	Reset switch	J4
Floppy drive interface	CN7	Green PC LED	J5
IDE interface 2	CN8	IDE interface LED	J6
IDE interface 1	CN9	32-bit PCI slots	PC1 – PC5
System Management Module	CN10	VRM connector	VRM

USER CONFIGURABLE SETTINGS		
Function	Label	Position
í Factory configured - do not alter (CMOS)	JP3	Unidentified

DRAM CONFIGURATION					
Size	Bank 0	Bank 1	Bank 2	Bank 3	Bank 4
8MB	(2) 1M x 36	None	None	None	None
8MB	None	None	(1) 1M x 64	None	None
16MB	(2) 2M x 36	None	None	None	None
16MB	(2) 1M x 36	(2) 1M x 36	None	None	None
16MB	None	None	(1) 2M x 64	None	None
16MB	None	None	(1) 1M x 64	(1) 1M x 64	None
24MB	(2) 2M x 36	(2) 1M x 36	None	None	None
24MB	None	None	(1) 2M x 64	(1) 1M x 64	None
24MB	None	None	(1) 1M x 64	(1) 1M x 64	(1) 1M x 64
24MB	(2) 1M x 36	(2) 1M x 36	None	None	(1) 1M x 64
24MB	(2) 1M x 36	None	None	(1) 1M x 64	(1) 1M x 64
32MB	(2) 4M x 36	None	None	None	None
32MB	(2) 2M x 36	(2) 2M x 36	None	None	None
32MB	None	None	(1) 4M x 64	None	None
32MB	None	None	(1) 2M x 64	(1) 2M x 64	None
32MB	(2) 1M x 36	(2) 1M x 36	None	None	(1) 2M x 64
40MB	(2) 4M x 36	(2) 1M x 36	None	None	None
40MB	None	None	(1) 4M x 64	(1) 1M x 64	None
40MB	(2) 2M x 36	(2) 2M x 36	None	None	(1) 1M x 64
48MB	(2) 4M x 36	(2) 2M x 36	None	None	None
48MB	None	None	(1) 4M x 64	(1) 2M x 64	None
48MB	None	None	(1) 2M x 64	(1) 2M x 64	(1) 2M x 64

Continued on next page. . .

ACTIVEI SYSTEMS, INC.
ADMIRAL

... continued from previous page

DRAM CONFIGURATION (CON'T)					
Size	Bank 0	Bank 1	Bank 2	Bank 3	Bank 4
48MB	(2) 2M x 36	(2) 2M x 36	None	None	(1) 2M x 64
48MB	(2) 2M x 36	None	None	(1) 2M x 64	(1) 2M x 64
48MB	(2) 2M x 36	None	(1) 2M x 64	None	(1) 2M x 64
64MB	(2) 8M x 36	None	None	None	None
64MB	(2) 4M x 36	(2) 4M x 36	None	None	None
64MB	None	None	(1) 8M x 64	None	None
72MB	(2) 8M x 36	(2) 1M x 36	None	None	None
72MB	None	None	(1) 8M x 64	(1) 1M x 64	None
72MB	(2) 4M x 36	(2) 4M x 36	None	None	(1) 1M x 64
80MB	(2) 8M x 36	(2) 2M x 36	None	None	None
80MB	None	None	(1) 8M x 64	(1) 2M x 64	None
80MB	(2) 4M x 36	(2) 4M x 36	None	None	(1) 2M x 64
96MB	(2) 8M x 36	(2) 4M x 36	None	None	None
96MB	None	None	(1) 8M x 64	(1) 4M x 64	None
96MB	None	None	(1) 4M x 64	(1) 4M x 64	(1) 4M x 64
96MB	(2) 4M x 36	None	None	(1) 4M x 64	(1) 4M x 64
128MB	(2) 8M x 36	(2) 8M x 36	None	None	None
128MB	(2) 16M x 36	None	None	None	None
128MB	None	None	(1) 8M x 64	(1) 8M x 64	None
128MB	None	None	(1) 16M x 64	None	None
136MB	(2) 16M x 36	(2) 1M x 36	None	None	None
136MB	(2) 8M x 36	(2) 8M x 36	None	None	(1) 1M x 64
144MB	(2) 16M x 36	(2) 2M x 36	None	None	None
144MB	(2) 8M x 36	(2) 8M x 36	None	None	(1) 2M x 64
160MB	(2) 16M x 36	(2) 4M x 36	None	None	None
160MB	(2) 8M x 36	None	(1) 8M x 64	None	(1) 8M x 64
192MB	(2) 16M x 36	(2) 8M x 36	None	None	None
192MB	None	None	(1) 8M x 64	(1) 8M x 64	(1) 8M x 64
192MB	(2) 8M x 36	None	None	(1) 8M x 64	(1) 8M x 64
256MB	(2) 16M x 36	(2) 16M x 36	None	None	None
256MB	None	None	(1) 16M x 64	(1) 16M x 64	None
256MB	None	None	None	(1) 32M x 64	None
256MB	(2) 32M x 36	None	None	None	None

Note: Board accepts EDO memory. Banks 0 & 1 and 2 - 4 are interchangeable.

Continued on next page. . .

ACTIVEI SYSTEMS, INC.
ADMIRAL

... continued from previous page

CACHE CONFIGURATION		
Size	Bank 0	TAG
256KB	(2) 32K x 32	Unidentified
512KB	(2) 64K x 32	Unidentified

CPU SPEED SELECTION (CYRIX)						
CPU speed	Clock speed	Multiplier	SW2/1	SW2/2	SW2/3	SW2/4
133MHz	55MHz	2x	On	Off	On	On
150MHz	60MHz	2x	On	Off	On	Off
166MHz	66MHz	2x	On	Off	Off	Off

CPU SPEED SELECTION (IBM)						
CPU speed	Clock speed	Multiplier	SW2/1	SW2/2	SW2/3	SW2/4
133MHz	55MHz	2x	On	Off	On	On
150MHz	60MHz	2x	On	Off	On	Off
166MHz	66MHz	2x	On	Off	Off	Off

CPU SPEED SELECTION (AMD)						
CPU speed	Clock speed	Multiplier	SW2/1	SW2/2	SW2/3	SW2/4
90MHz	60MHz	1.5x	Off	Off	On	Off
100MHz	66MHz	1.5x	Off	Off	Off	Off
120MHz	60MHz	1.5x	Off	Off	On	Off
133MHz	66MHz	1.5x	On	Off	Off	Off
150MHz	60MHz	1.75x	On	On	On	Off
166MHz K5	66MHz	1.75x	On	On	Off	Off
166MHz K6	66MHz	2.5x	On	On	Off	Off
200MHz	66MHz	2.5x	Off	On	Off	Off
233MHz	66MHz	3.5x	Off	Off	Off	Off

CPU SPEED SELECTION (INTEL)						
CPU speed	Clock speed	Multiplier	SW2/1	SW2/2	SW2/3	SW2/4
90MHz	60MHz	1.5x	Off	Off	On	Off
100MHz	66MHz	1.5x	Off	Off	Off	Off
120MHz	60MHz	2x	On	Off	On	Off
133MHz	66MHz	2x	On	Off	Off	Off
150MHz	60MHz	2.5x	On	On	On	Off
166MHz	66MHz	2.5x	On	On	Off	Off
200MHz	66MHz	3x	Off	On	Off	Off
233MHz	66MHz	3.5x	Off	Off	Off	Off

Continued on next page. . .

ACTIVEI SYSTEMS, INC.
ADMIRAL

... continued from previous page

CPU VOLTAGE SELECTION				
Voltage	SW1/1	SW1/2	SW1/3	SW1/4
2.5v	On	Off	Off	Off
2.8v	Off	On	Off	Off
2.9v	Off	Off	On	Off
3.2v	Off	Off	Off	On
3.3v	N/A	N/A	N/A	N/A
3.5v	N/A	N/A	N/A	N/A