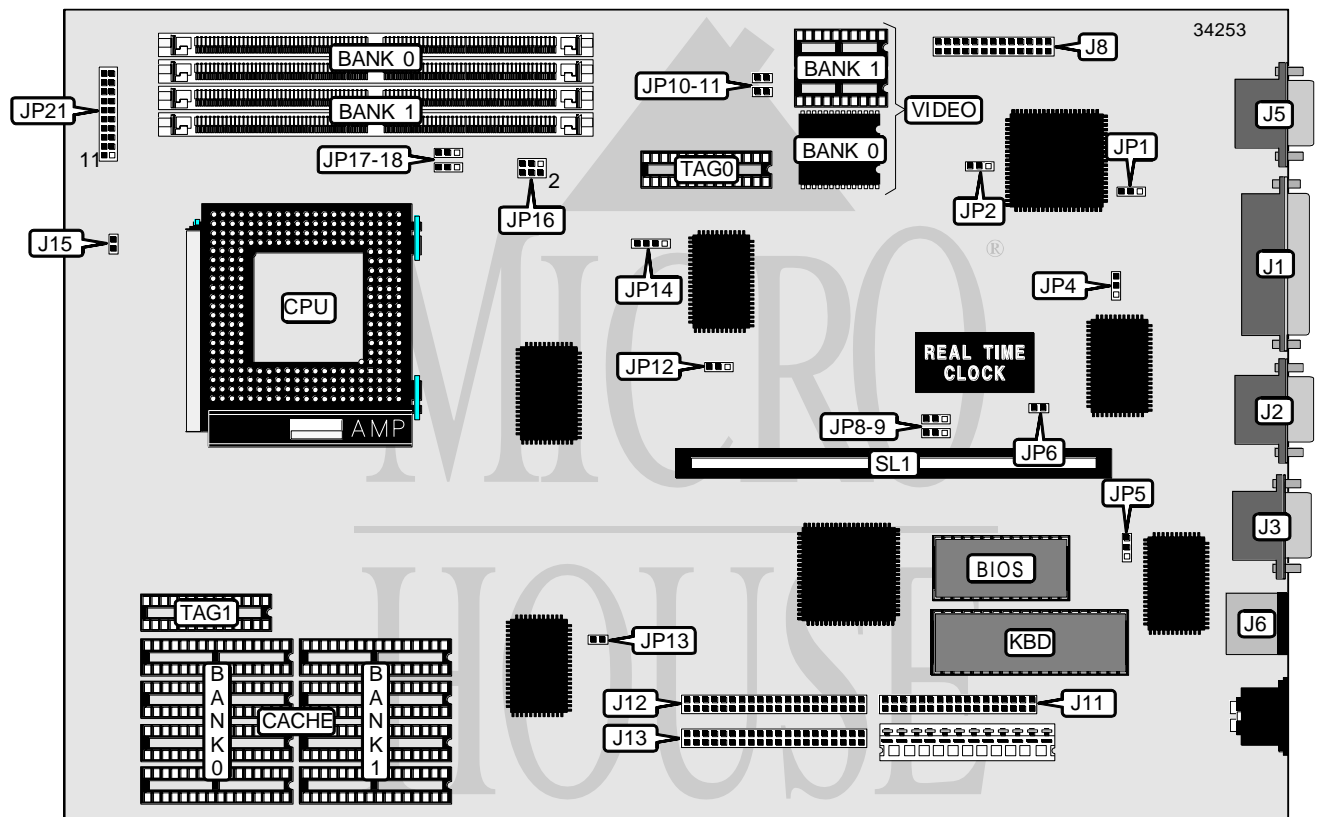


EPSON, INC.  
 ACTION PC 8000, ENDEAVOR PRO

<b>Processor</b>	Pentium
<b>Processor Speed</b>	75/90/100MHz
<b>Chip Set</b>	Unidentified
<b>Video Chip Set</b>	S3
<b>Maximum Onboard Memory</b>	128MB
<b>Maximum Video Memory</b>	2MB
<b>Cache</b>	256/512/1024KB
<b>BIOS</b>	Phoenix
<b>Dimensions</b>	330mm x 218mm
<b>I/O Options</b>	Floppy drive interface, green PC connector, IDE interfaces (2), parallel port, PS/2 mouse port, serial ports (2), VGA feature connector, VGA port, riser slot
<b>NPU Options</b>	None



Continued on next page. . .

EPSON, INC.  
ACTION PC 8000, ENDEAVOR PRO

... continued from previous page

CONNECTIONS			
Purpose	Location	Purpose	Location
Parallel port	J1	IDE interface 1	J13
Serial port 2	J2	IDE interface LED	J15
Serial port 1	J3	Turbo LED	JP21/pins 2 & 3
VGA port	J5	Reset switch	JP21/pins 9 & 10
PS/2 mouse port	J6	Power LED	JP21/pins 11 - 13
VGA feature connector	J8	Speaker	JP21/pins 17 - 20
Floppy drive interface	J11	Riser slot	SL1
IDE interface 2	J12		

USER CONFIGURABLE SETTINGS		
Function	Label	Position
í On board video enabled	JP2	Pins 1 & 2 closed
On board video disabled	JP2	Pins 2 & 3 closed
í SMC 37C655 signal enabled	JP4	Pins 1 & 2 closed
SMC 37C655 signal disabled	JP4	Pins 2 & 3 closed
í Flash BIOS write protect disabled	JP5	Pins 2 & 3 closed
Flash BIOS write protect enabled	JP5	Pins 1 & 2 closed
BIOS type select EPROM	JP5	Open
í CMOS memory normal operation	JP6	Open
CMOS memory clear	JP6	Closed
í IDE interface enabled	JP13	Open
IDE interface disabled	JP13	Closed
í Cache type select write back	JP17	Pins 1 & 2 closed
Cache type select write through	JP17	Pins 2 & 3 closed
í Cache write to invalidate	JP18	Pins 2 & 3 closed
Cache always write	JP18	Pins 1 & 2 closed

DRAM CONFIGURATION		
Size	Bank 0	Bank 1
2MB	(2) 256K x 36	None
4MB	(2) 256K x 36	(2) 256K x 36
4MB	(2) 512K x 36	None
8MB	(2) 512K x 36	(2) 512K x 36
36MB	(2) 512K x 36	(2) 4M x 36
8MB	(2) 1M x 36	None
16MB	(2) 1M x 36	(2) 1M x 36
16MB	(2) 2M x 36	None
24MB	(2) 2M x 36	(2) 1M x 36
32MB	(2) 2M x 36	(2) 2M x 36
48MB	(2) 2M x 36	(2) 4M x 36
64MB	(2) 4M x 36	(2) 4M x 36
64MB	(2) 8M x 36	None
128MB	(2) 8M x 36	(2) 8M x 36
128MB	(2) 16M x 36	None

Note: Board also accepts x 32 SIMMs.

*Continued on next page. . .*

EPSON, INC.  
 ACTION PC 8000, ENDEAVOR PRO

... continued from previous page

DRAM TYPE CONFIGURATION	
Type	JP14
í Single sided only	Pins 2 & 3 closed
Double and single sided	Pins 1 & 2, 3 & 4 closed

DRAM PARITY CONFIGURATION	
Setting	JP12
í Parity disabled (x 32 SIMMs installed)	Pins 1 & 2 closed
Parity enabled (x 36 SIMMs installed)	Pins 2 & 3 closed

CACHE CONFIGURATION				
Size	Bank 0	Bank 1	TAG 0	TAG 1
256KB	(4) 32K x 8	(4) 32K x 8	(1) 32K x 8	(1) 32K x 8
512KB	(4) 64K x 8	(4) 64K x 8	(1) 32K x 8	(1) 32K x 8
1MB	(4) 128K x 8	(4) 128K x 8	(1) 32K x 8	(1) 32K x 8

CACHE JUMPER CONFIGURATION		
Size	JP10	JP11
256KB	Open	Open
512KB	Closed	Open
1MB	Closed	Closed

Continued on next page...

EPSON, INC.  
ACTION PC 8000, ENDEAVOR PRO

... continued from previous page

VIDEO MEMORY CONFIGURATION		
Size	Bank 0	Bank 1
1MB	1MB	None
2MB	1MB	(2) 256K x 16

Note: Bank 0 is factory installed and is not configurable.

VIDEO MEMORY TYPE CONFIGURATION	
Type	JP1
í Fast page mode	Pins 1 & 2 closed
EDO	Pins 2 & 3 closed

CPU SPEED SELECTION			
CPU speed	Clock speed	Multiplier	JP16
75MHz	50MHz	1.5x	Open
90MHz	60MHz	1.5x	Pins 3 & 4 closed
100MHz	66MHz	1.5x	Pins 1 & 2, 3 & 4 closed

DMA CHANNEL SELECTION		
Channel	JP8	JP9
1	Pins 1 & 2 closed	Pins 1 & 2 closed
3	Pins 2 & 3 closed	Pins 2 & 3 closed