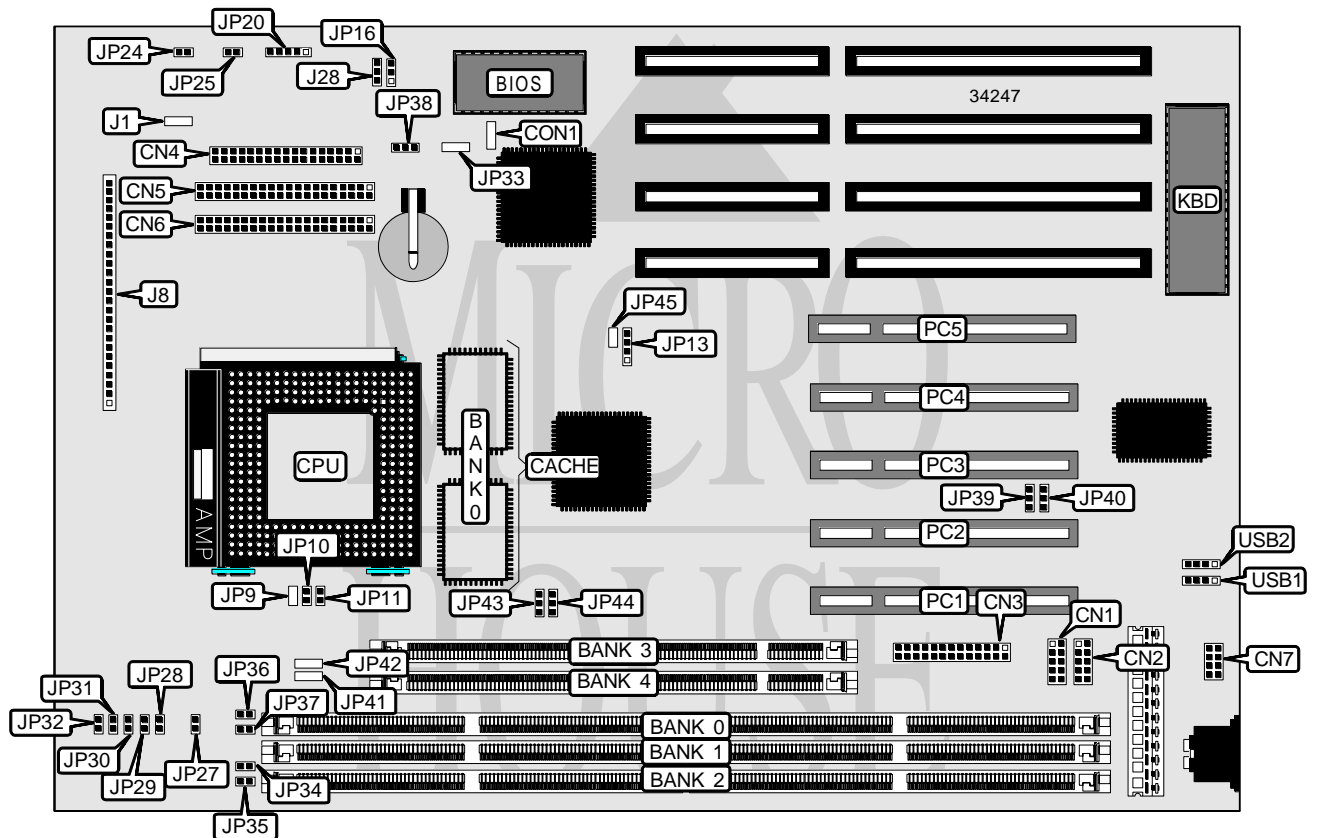


TYAN COMPUTER CORPORATION

S1570 (REV. 1.0)

Processor	CX M1/IBM/SGS/AM K5/Pentium
Processor Speed	75/90/100/120/133/150/166/180/200MHz
Chip Set	Intel
Video Chip Set	None
Maximum Onboard Memory	256MB (EDO supported)
Maximum Video Memory	None
Cache	512KB
BIOS	AMI/Award
Dimensions	330mm x 218mm
I/O Options	32-bit PCI slots (5), floppy drive interface, green PC connector, IDE interfaces (2), parallel port, PS/2 mouse interface, serial ports (2), IR connector, USB connectors (2)
NPU Options	None



Continued on next page. . .

TYAN COMPUTER CORPORATION
S1570 (REV. 1.0)

... continued from previous page

CONNECTIONS			
Purpose	Location	Purpose	Location
Serial port 2	CN1	Power LED	J8/pins 18 & 20
Serial port 1	CN2	Reset switch	J8/pins 22 & 23
Parallel port	CN3	Speaker	J8/pins 24 & 27
Floppy drive interface	CN4	Chassis fan power	J28
IDE interface 2	CN5	Power LED & keylock	JP20
IDE interface 1	CN6	Turbo switch	JP24
PS/2 mouse interface	CN7	Turbo LED	JP25
Green PC connector	J8/pins 3 & 4	32-bit PCI slots	PC1 – PC5
IR connector	J8/pins 6 – 11	USB connector 1	USB1
IDE interface LED	J8/pins 13 – 16	USB connector 2	USB2

USER CONFIGURABLE SETTINGS		
Function	Label	Position
í Factory configured - do not alter	CON1	Unidentified
í Factory configured - do not alter	J1	Unidentified
í Factory configured - do not alter	JP9	Unidentified
í Factory configured - do not alter (matches BIOS installed)	JP16	Pins 1 & 2 closed
í Factory configured - do not alter	JP33	Unidentified
í CMOS memory normal operation	JP38	Pins 1 & 2 closed
CMOS memory clear	JP38	Pins 2 & 3 closed
í Factory configured - do not alter	JP41	Unidentified
í Factory configured - do not alter	JP42	Unidentified
í Factory configured - do not alter	JP45	Unidentified

DRAM CONFIGURATION					
Size	Bank 0	Bank 1	Bank 2	Bank 3	Bank 4
8MB	(2) 1M x 36	None	None	None	None
8MB	None	None	None	(1) 1M x 64	None
16MB	None	None	None	(1) 2M x 64	None
16MB	(2) 2M x 36	None	None	None	None
24MB	(2) 1M x 36	(2) 1M x 36	(2) 1M x 36	None	None
32MB	(2) 4M x 36	None	None	None	None
32MB	None	(2) 2M x 36	None	(1) 2M x 64	None
64MB	(2) 8M x 36	None	None	None	None
64MB	None	None	None	None	(1) 8M x 64
96MB	None	None	None	(1) 4M x 64	(1) 8M x 64
128MB	None	None	None	(1) 8M x 64	(1) 8M x 64
192MB	(2) 16M x 36	None	None	None	(1) 8M x 64
256MB	(2) 16M x 36	(2) 16M x 36	None	None	None

Note: Board accepts EDO memory.

Continued on next page. . .

TYAN COMPUTER CORPORATION
S1570 (REV. 1.0)

... continued from previous page

DIMM VOLTAGE CONFIGURATION		
Voltage	JP43	JP44
í 3v	Pins 1 & 2 closed	Pins 1 & 2 closed
5v	Pins 2 & 3 closed	Pins 2 & 3 closed

SIMM VOLTAGE CONFIGURATION				
Voltage	JP34	JP35	JP36	JP37
3v	Open	Open	Closed	Closed
í 5v	Closed	Closed	Open	Open

CACHE CONFIGURATION	
Size	Bank 0
512KB	(2) 64K x 32

CPU SPEED SELECTION (CYRIX)					
CPU speed	Clock speed	Multiplier	JP10	JP11	JP13
120MHz	50MHz	2x	Closed	Open	1 & 2, 3 & 4
150MHz	60MHz	2x	Closed	Open	3 & 4
166MHz	66MHz	2x	Closed	Open	1 & 2

Note: Pins designated should be in the closed position.

CPU SPEED SELECTION (IBM)					
CPU speed	Clock speed	Multiplier	JP10	JP11	JP13
120MHz	50MHz	2x	Closed	Open	1 & 2, 3 & 4
150MHz	60MHz	2x	Closed	Open	3 & 4
166MHz	66MHz	2x	Closed	Open	1 & 2

Note: Pins designated should be in the closed position.

CPU SPEED SELECTION (SGS)					
CPU speed	Clock speed	Multiplier	JP10	JP11	JP13
120MHz	50MHz	2x	Closed	Open	1 & 2, 3 & 4
150MHz	60MHz	2x	Closed	Open	3 & 4
166MHz	66MHz	2x	Closed	Open	1 & 2

Note: Pins designated should be in the closed position.

Continued on next page. . .

TYAN COMPUTER CORPORATION
S1570 (REV. 1.0)

... continued from previous page

CPU SPEED SELECTION (AMD)					
CPU speed	Clock speed	Multiplier	JP10	JP11	JP13
90MHz	60MHz	1.5x	Open	Open	3 & 4
100MHz	66MHz	1.5x	Open	Open	1 & 2
120MHz	60MHz	2x	Closed	Open	3 & 4
133MHz	66MHz	2x	Closed	Open	1 & 2
150MHz	60MHz	2.5x	Closed	Closed	3 & 4
166MHz	66MHz	2.5x	Closed	Closed	1 & 2
200MHz	66MHz	3x	Open	Closed	1 & 2

Note: Pins designated should be in the closed position.

CPU SPEED SELECTION (INTEL)					
CPU speed	Clock speed	Multiplier	JP10	JP11	JP13
75MHz	50MHz	1.5x	Open	Open	1 & 2, 3 & 4
90MHz	60MHz	1.5x	Open	Open	3 & 4
100MHz	66MHz	1.5x	Open	Open	1 & 2
120MHz	60MHz	2x	Closed	Open	3 & 4
133MHz	66MHz	2x	Closed	Open	1 & 2
150MHz	60MHz	2.5x	Closed	Closed	3 & 4
166MHz	66MHz	2.5x	Closed	Closed	1 & 2
180MHz	60MHz	3x	Open	Closed	3 & 4
200MHz	66MHz	3x	Open	Closed	1 & 2

Note: Pins designated should be in the closed position.

CPU VOLTAGE SELECTION						
Type	JP27	JP28	JP29	JP30	JP31	JP32
Cyrix	N/A	N/A	N/A	Closed	Open	Open
P54C	Open	Closed	Open	Open	Closed	Closed
P55C	Open	Closed	Open	Open	Closed	Closed

SERIAL PORT SELECTION		
Setting	J39	J40
Used as serial port	Pins 1 & 2 closed	Pins 1 & 2 closed
Used as IR port	Pins 2 & 3 closed	Pins 2 & 3 closed