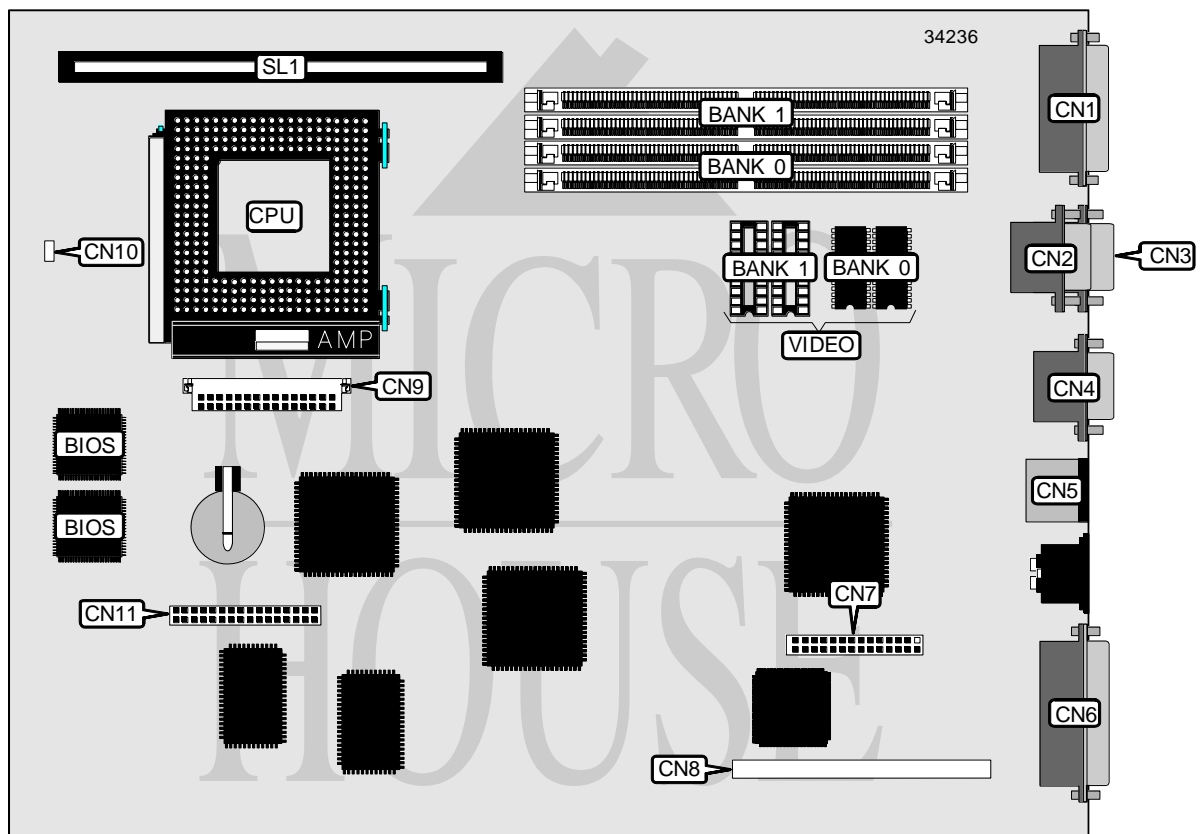


# DIGITAL EQUIPMENT CORPORATION VENTURIS FXE

<b>Processor</b>	Pentium
<b>Processor Speed</b>	90/100/120/133MHz
<b>Chip Set</b>	SIS
<b>Video Chip Set</b>	S3
<b>Maximum Onboard Memory</b>	128MB (EDO supported)
<b>Maximum Video Memory</b>	2MB
<b>Cache</b>	256/512KB
<b>BIOS</b>	Unidentified
<b>Dimensions</b>	254mm x 218mm
<b>I/O Options</b>	Floppy drive interface, IDE interfaces (2), game port (optional), PS/2 mouse port, serial ports (2), VGA feature connector, VGA port, cache slot, VRM connector, MPEG connector (optional), wavetable connector (optional)
<b>NPU Options</b>	None



*Continued on next page . . .*

DIGITAL EQUIPMENT CORPORATION  
VENTURIS FXE

... continued from previous page

CONNECTIONS			
Purpose	Location	Purpose	Location
Game/MIDI port (optional)	CN1	MPEG connector (optional)	CN7
Serial port	CN2	VGA feature connector	CN8
Serial port	CN3	VRM connector/MPEG connector	CN9
VGA port	CN4	Chassis fan power	CN10
PS/2 mouse port	CN5	Wavetable connector (optional)	CN11
Parallel port	CN6	Cache slot	SL1

DRAM CONFIGURATION		
Size	Bank 0	Bank 1
8MB	(2) 1M x 36	None
16MB	(2) 1M x 36	(2) 1M x 36
16MB	(2) 2M x 36	None
24MB	(2) 1M x 36	(2) 2M x 36
32MB	(2) 2M x 36	(2) 2M x 36
32MB	(2) 4M x 36	None
64MB	(2) 4M x 36	(2) 4M x 36
64MB	(2) 8M x 36	None
128MB	(2) 8M x 36	(2) 8M x 36

Note: Board accepts EDO memory.

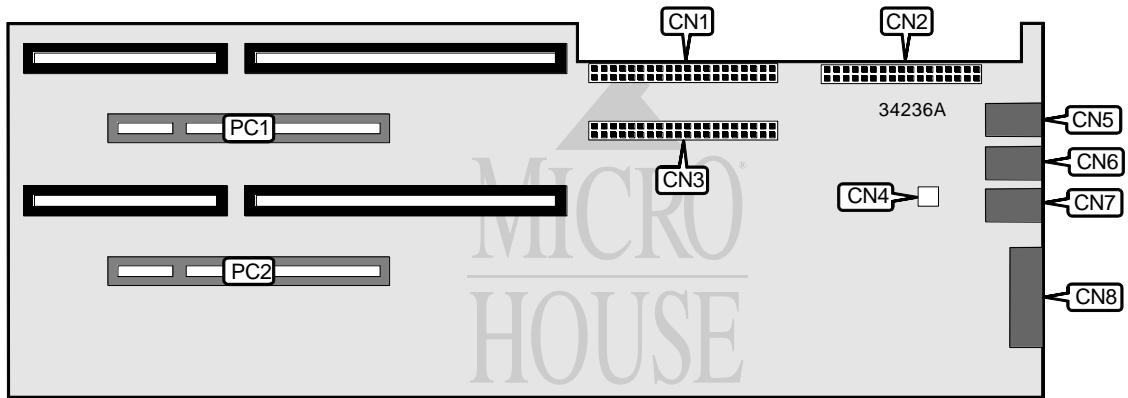
CACHE CONFIGURATION	
Size	SL1
256KB	256KB module installed
512KB	512KB module installed

VIDEO MEMORY CONFIGURATION		
Size	Bank 0	Bank 1
1MB	(2) 256K x 16	None
2MB	(2) 256K x 16	(2) 256K x 16

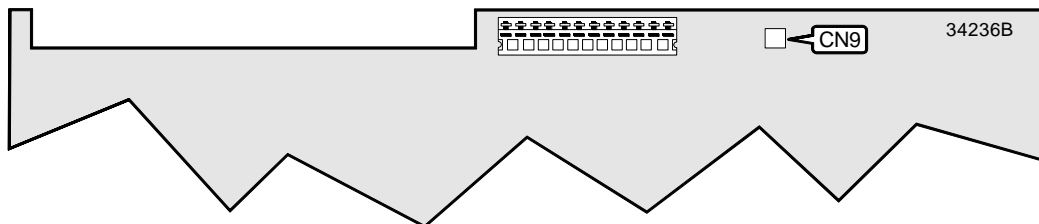
Continued on next page. . .

DIGITAL EQUIPMENT CORPORATION  
VENTURIS FXE

... continued from previous page



VENTURIS FX BACKPLANE (FRONT VIEW)



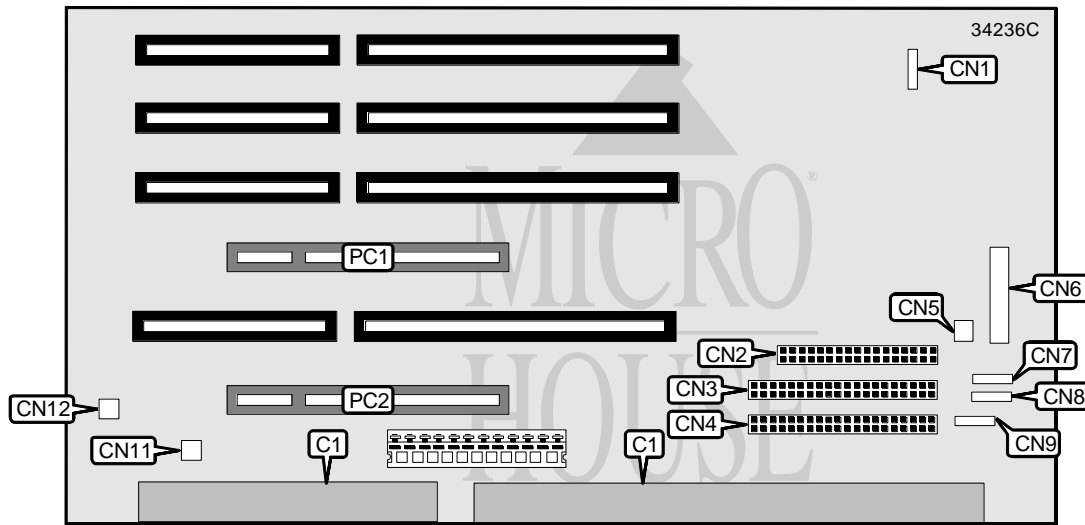
VENTURIS FX BACKPLANE (BACK VIEW)

CONNECTIONS			
Purpose	Location	Purpose	Location
Mainboard connectors	C1	SCSI interface LED	CN6
IDE interface 1	CN1	Chassis fan power	CN7
Floppy drive interface	CN2	Front panel connector	CN8
IDE interface 2	CN3	Video in connector	CN9
Twisted pair in connector	CN4	32-bit PCI slots	PC1 & PC2
F/M in connector	CN5		

Continued on next page. . .

DIGITAL EQUIPMENT CORPORATION  
VENTURIS FXE

... continued from previous page



VENTURIS FXS BACKPLANE

CONNECTIONS			
Purpose	Location	Purpose	Location
Mainboard connectors	C1	F/M in connector	CN7
Audio in connector	CN1	CD-ROM audio in connector	CN8
Floppy drive interface	CN2	SCSI interface LED	CN9
IDE interface 2	CN3	Video in connector	CN11
IDE interface 1	CN4	Chassis fan power	CN12
Chassis fan power	CN5	32-bit PCI slots	PC1 & PC2
Front panel connector	CN6		