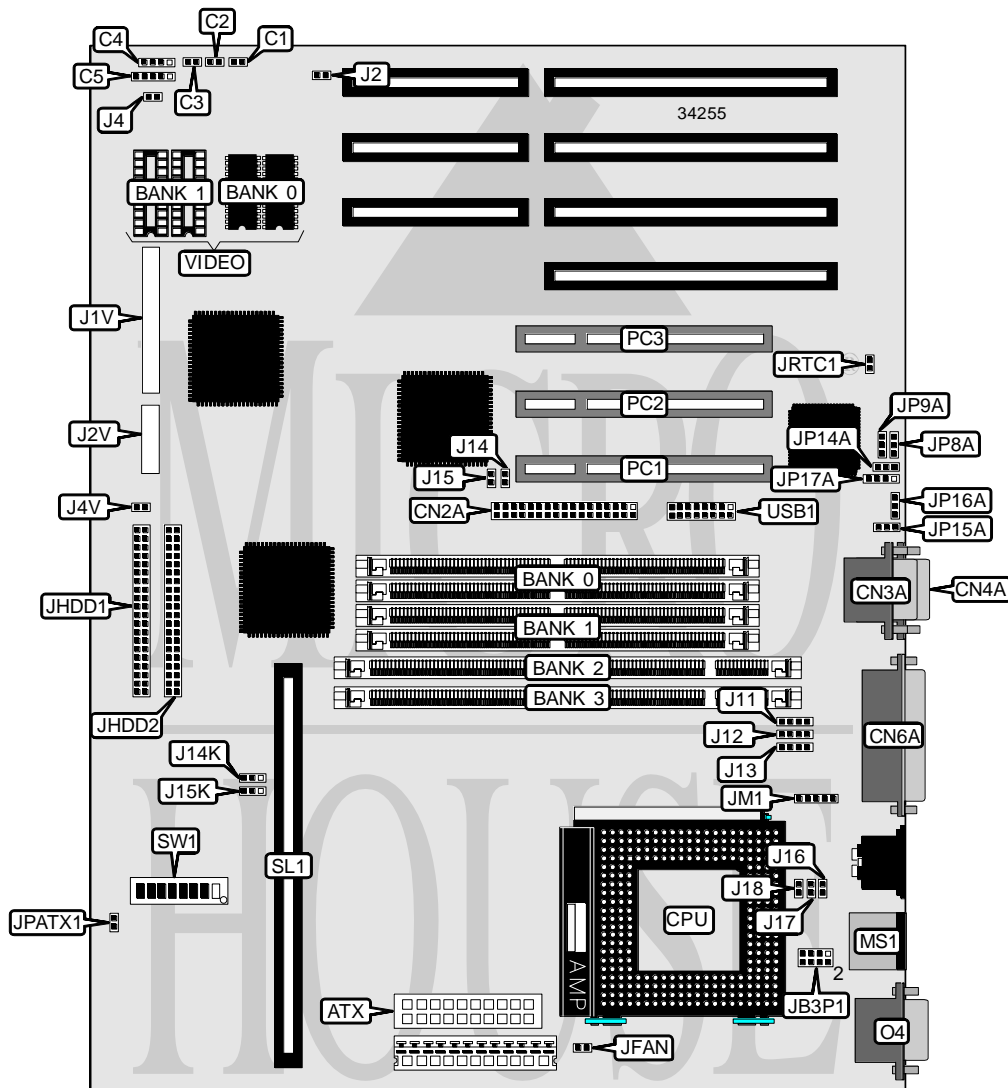


# TECHMEDIA COMPUTER SYSTEMS CORPORATION

## TMB-I430VX-ATX

<b>Processor</b>	CX M1/AM K5/Pentium
<b>Processor Speed</b>	75/90/100/120/133/150/166/180/200MHz
<b>Chip Set</b>	Intel
<b>Video Chip Set</b>	S3
<b>Maximum Onboard Memory</b>	128MB (EDO supported)
<b>Maximum Video Memory</b>	2MB
<b>Cache</b>	256/512KB
<b>BIOS</b>	Award
<b>Dimensions</b>	280mm x 224mm
<b>I/O Options</b>	32-bit PCI slots (3), floppy drive interface, green PC connector, IDE interfaces (2), parallel port, PS/2 mouse port, PS/2 mouse interface, serial ports (2), VGA port, cache slot, IR connector, USB connector, ATX power connector
<b>NPU Options</b>	None



Continued on next page . . .

TECHMEDIA COMPUTER SYSTEMS CORPORATION  
 TMB-I430VX-ATX

... continued from previous page

CONNECTIONS			
Purpose	Location	Purpose	Location
ATX power supply	ATX	Chassis fan power	JFAN
IDE interface LED	C1	Soft off power supply	JPATX1
Green PC connector	C2	IDE interface 1	JHDD1
Reset switch	C3	IDE interface 2	JHDD2
Speaker	C4	IR connector	JP17A
Power LED & keylock	C5	PS/2 mouse interface	JM1
Floppy drive interface	CN2A	PS/2 mouse port	MS1
Serial port 1	CN3A	VGA port	O4
Serial port 2	CN4A	32-bit PCI slots	PC1 – PC3
Parallel port	CN6A	Cache slot	SL1
Green PC LED	J4	USB connector	USB1

USER CONFIGURABLE SETTINGS		
Function	Label	Position
í Factory configured - do not alter	J2	Unidentified
í Factory configured - do not alter	J14	Unidentified
í Factory configured - do not alter	J15	Unidentified
í Factory configured - do not alter	J18	Unidentified
í Factory configured - do not alter	J1V	Unidentified
í Factory configured - do not alter	J2V	Unidentified
í Factory configured - do not alter	JP8A	Unidentified
í Factory configured - do not alter	JP9A	Unidentified
í Factory configured - do not alter	JP14A	Unidentified
í Factory configured - do not alter	JP15A	Unidentified
í Factory configured - do not alter	JP16A	Unidentified
í CMOS memory normal operation	JRTC1	Open
CMOS memory clear	JRTC1	Closed

DIMM/DRAM CONFIGURATION				
Size	Bank 0	Bank 1	Bank 2	Bank 3
8MB	(2) 1M x 36	None	None	None
8MB	None	None	(1) 1M x 64	None
16MB	None	None	(1) 2M x 64	None
16MB	(2) 1M x 36	(2) 1M x 36	None	None
24MB	(2) 1M x 36	(2) 2M x 36	None	None
24MB	(2) 2M x 36	None	None	(1) 1M x 64
32MB	(2) 4M x 36	None	None	None
32MB	None	None	(1) 4M x 64	None
32MB	None	None	(1) 2M x 64	(1) 2M x 64
32MB	(2) 2M x 36	(2) 2M x 36	None	None
40MB	(2) 1M x 36	(2) 4M x 36	None	None
40MB	(2) 4M x 36	None	None	(1) 1M x 64

Continued on next page...

TECHMEDIA COMPUTER SYSTEMS CORPORATION  
 T M B - I 4 3 0 V X - A T X

... continued from previous page

DIMM/DRAM CONFIGURATION (CON'T)				
Size	Bank 0	Bank 1	Bank 2	Bank 3
48MB	(2) 2M x 36	(2) 4M x 36	None	None
48MB	(2) 2M x 36	None	(1) 4M x 64	None
64MB	(2) 8M x 36	None	None	None
64MB	None	None	None	(1) 8M x 64
64MB	(2) 4M x 36	(2) 4M x 36	None	None
64MB	None	None	(1) 4M x 64	(1) 4M x 64
72MB	(2) 8M x 36	(2) 1M x 36	None	None
72MB	(2) 8M x 36	None	None	(1) 1M x 64
80MB	(2) 2M x 36	None	None	(1) 8M x 64
80MB	(2) 8M x 36	(2) 2M x 36	None	None
80MB	(2) 8M x 36	None	None	(1) 2M x 64
96MB	(2) 8M x 36	(2) 4M x 36	None	None
96MB	(2) 4M x 36	None	None	(1) 8M x 64
96MB	(2) 8M x 36	None	None	(1) 4M x 64
128MB	(2) 8M x 36	(2) 8M x 36	None	None

Note: Board accepts EDO memory. Banks 0 & 1, 2 & 3 are interchangeable.

DIMM VOLTAGE CONFIGURATION			
Voltage	J11	J12	J13
3.3v	Pins 1 & 2 closed	Pins 1 & 2 closed	Pins 1 & 2 closed
5v	Pins 3 & 4 closed	Pins 3 & 4 closed	Pins 3 & 4 closed

CACHE CONFIGURATION		
Size	Bank 0	SL1
256KB (A)	(2) 32K x 32	Not installed
256KB (B)	(2) 32K x 32	256KB module installed
512KB	(2) 64K x 32	Not installed

Note: The location of bank 0 is unidentified.

CACHE JUMPER CONFIGURATION		
Size	J14K	J15K
256KB (A)	Pins 1 & 2 closed	Pins 2 & 3 closed
256KB (B)	Pins 2 & 3 closed	Pins 2 & 3 closed
512KB	Pins 2 & 3 closed	Pins 1 & 2 closed

VIDEO MEMORY CONFIGURATION		
Size	Bank 0	Bank 1
1MB	(2) 256K x 16	None
2MB	(2) 256K x 16	(2) 256K x 16

Continued on next page...

TECHMEDIA COMPUTER SYSTEMS CORPORATION  
 TMB-1430VX-ATX

... continued from previous page

CPU SPEED SELECTION (CYRIX)						
CPU speed	Clock speed	Multiplier	SW1/1	SW1/2	SW1/3	SW1/4
120MHz	50MHz	1.5x	Off	Off	On	Off
150MHz	60MHz	1.5x	On	On	Off	Off
166MHz	66MHz	1.5x	On	Off	Off	Off

CPU SPEED SELECTION (CYRIX, CON'T)						
CPU speed	Clock speed	Multiplier	SW1/5	SW1/6	SW1/7	SW1/8
120MHz	50MHz	2x	Off	On	On	Off
150MHz	60MHz	2x	Off	On	On	Off
166MHz	66MHz	2x	Off	On	On	Off

CPU SPEED SELECTION (AMD)						
CPU speed	Clock speed	Multiplier	SW1/1	SW1/2	SW1/3	SW1/4
75MHz	50MHz	1.5x	Off	Off	On	Off
90MHz	60MHz	1.5x	On	On	Off	Off
100MHz	66MHz	1.5x	On	Off	Off	Off

CPU SPEED SELECTION (AMD, CON'T)						
CPU speed	Clock speed	Multiplier	SW1/5	SW1/6	SW1/7	SW1/8
75MHz	50MHz	1.5x	On	Off	On	Off
90MHz	60MHz	1.5x	On	Off	On	Off
100MHz	66MHz	1.5x	On	Off	On	Off

CPU SPEED SELECTION (INTEL)						
CPU speed	Clock speed	Multiplier	SW1/1	SW1/2	SW1/3	SW1/4
75MHz	50MHz	1.5x	Off	Off	On	Off
90MHz	60MHz	1.5x	On	On	Off	Off
100MHz	66MHz	1.5x	On	Off	Off	Off
120MHz	60MHz	2x	On	On	Off	Off
133MHz	66MHz	2x	On	Off	Off	Off
150MHz	60MHz	2.5x	On	On	Off	Off
166MHz	66MHz	2.5x	On	Off	Off	Off
180MHz	60MHz	3x	On	On	Off	Off
200MHz	66MHz	3x	On	Off	Off	Off

Continued on next page...

TECHMEDIA COMPUTER SYSTEMS CORPORATION  
 TMB-I430VX-ATX

... continued from previous page

CPU SPEED SELECTION (INTEL, CON'T)						
CPU speed	Clock speed	Multiplier	SW1/5	SW1/6	SW1/7	SW1/8
75MHz	50MHz	1.5x	On	Off	On	Off
90MHz	60MHz	1.5x	On	Off	On	Off
100MHz	66MHz	1.5x	On	Off	On	Off
120MHz	60MHz	2x	Off	On	On	Off
133MHz	66MHz	2x	Off	On	On	Off
150MHz	60MHz	2.5x	Off	On	Off	On
166MHz	66MHz	2.5x	Off	On	Off	On
180MHz	60MHz	3x	On	Off	Off	On
200MHz	66MHz	3x	On	Off	Off	On

CPU VOLTAGE SELECTION				
Voltage	V core	J16	J17	JB3P1
3v	2.8v	Closed	Closed	Open
3.3v	3.3v	Open	Open	1 & 2, 3 & 3, 5 & 6, 7 & 8