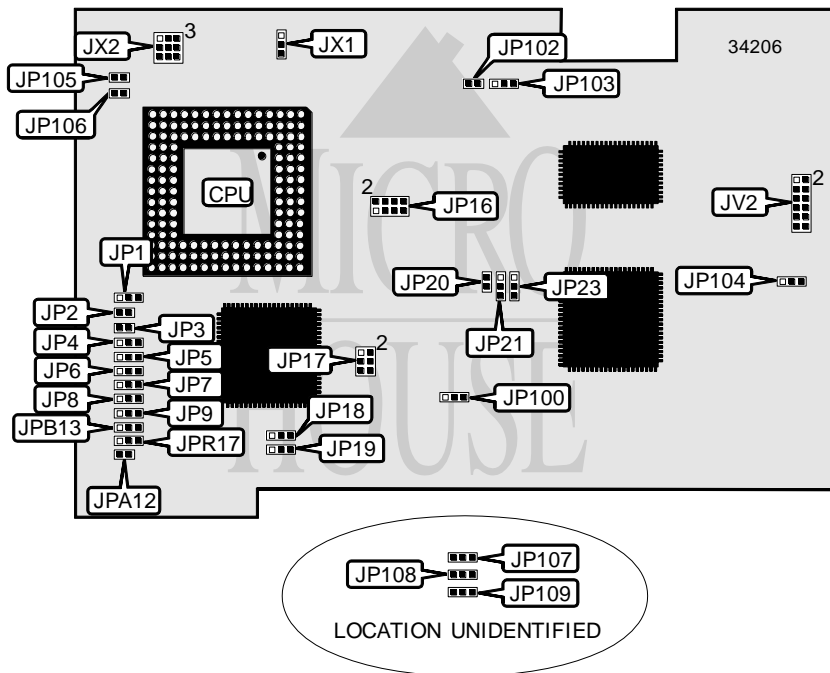


DATAVAN INTERNATIONAL CORPORATION

DTV-05C

Processor	80486SX/80486DX/CX486DX2/80486DX2/CX486DX4/ AM486DX4(V8B)/AM486DX4(V8T)/80486DX4(WB)/80486DX4(WT)/ AM5X86/CX5X86
Processor Speed	25/33/40/50(internal)/50/66(internal)/80(internal)/100(internal)/ 120(internal)/133(internal)MHz
Chip Set	ALI
Video Chip Set	Cirrus Logic
Maximum Onboard Memory	32MB
Maximum Video Memory	Unidentified
Cache	64/128/256KB
BIOS	AMI
Dimensions	270mm x 150mm
I/O Options	Floppy drive interface, IDE interface, parallel port, serial ports (2), VGA feature connector, VGA port
NPU Options	None



CONNECTIONS			
Purpose	Location	Purpose	Location
Chassis fan power	CN100	VGA feature connector	P1
Power LED	JP13	VGA port	P2
Speaker	JP14	IDE interface	PV1
Turbo LED	JP15	Floppy drive interface	PV2
Reset switch	JP24	Serial port 1	PV4
Chassis fan power	JP101	Serial port 2	PV5
IDE interface LED	JV1	Parallel port	PV6

Note: The locations of all connectors are unidentified.

Continued on next page. . .

DATAVAN INTERNATIONAL CORPORATION
DTV-05C

... continued from previous page

USER CONFIGURABLE SETTINGS		
Function	Label	Position
í Factory configured – do not alter	JP2	Closed
í Factory configured – do not alter	JP3	Closed
í Factory configured – do not alter	JP4	Pins 2 & 3 closed
í Factory configured – do not alter	JP5	Pins 2 & 3 closed
í Factory configured – do not alter	JP6	Pins 1 & 2 closed
í Factory configured – do not alter	JP7	Pins 1 & 2 closed
í Factory configured – do not alter	JP9	Pins 2 & 3 closed
í Factory configured – do not alter	JP18	Pins 2 & 3 closed
í Factory configured – do not alter	JP19	Pins 2 & 3 closed
í On board video enabled	JP100	Pins 1 & 2 closed
On board video disabled	JP100	Pins 2 & 3 closed
í CMOS memory normal operation	JP105	Open
CMOS memory clear	JP105	Closed
í Factory configured – do not alter	JP106	Open
í Factory configured – do not alter	JP107	Pins 1 & 2 closed
í Factory configured – do not alter	JP108	Pins 1 & 2 closed
í Factory configured – do not alter	JP109	Pins 1 & 2 closed
í Factory configured – do not alter	JPA12	Closed
í Floppy drive interface enabled	JV2/pins 5 & 6	Closed
Floppy drive interface disabled	JV2/pins 5 & 6	Open
í IDE interface enabled	JV2/pins 7 & 8	Closed
IDE interface disabled	JV2/pins 7 & 8	Open
í Serial port 1 enabled	JV2/pins 9 & 10	Closed
Serial port 1 disabled	JV2/pins 9 & 10	Open
í Serial port 2 enabled	JV2/pins 11 & 12	Closed
Serial port 2 disabled	JV2/pins 11 & 12	Open

DRAM CONFIGURATION		
Size	Bank 0	Bank 1
2MB	(1) 256K x 36	(1) 256K x 36
4MB	(1) 1M x 36	None
8MB	(1) 1M x 36	(1) 1M x 36
8MB	(1) 2M x 36	None
16MB	(1) 4M x 36	None
32MB	(1) 4M x 36	(1) 4M x 36

Note: The location of banks 0 & 1 is unidentified.

CACHE CONFIGURATION
Note: Board accepts 64KB/128KB/256KB cache. The location and chip sizes are unidentified.

Continued on next page. . .

DATAVAN INTERNATIONAL CORPORATION
DTV-05C

... continued from previous page

CACHE JUMPER CONFIGURATION				
Size	JP17	JP20	JP21	JP23
64KB	1 & 2	Open	1 & 2	1 & 2
128KB	1 & 2, 3 & 4	Closed	2 & 3	1 & 2
256KB	1 & 2, 3 & 4, 5 & 6	Closed	1 & 2	1 & 2

Note: Pins designated should be in the closed position.

CPU SPEED SELECTION	
Speed	JP16
25MHz	Pins 1 & 2, 5 & 6 closed
33MHz	Pins 1 & 2, 3 & 4 closed
40MHz	Pins 3 & 4, 5 & 6, 7 & 8 closed
50iMHz	Pins 1 & 2, 5 & 6 closed
50MHz	Pins 1 & 2, 5 & 6, 7 & 8 closed
66iMHz	Pins 1 & 2, 3 & 4, 7 & 8 closed
80iMHz	Pins 5 & 6, 7 & 8 closed
100iMHz	Pins 3 & 4, 7 & 8 closed
120iMHz	Pins 3 & 4, 5 & 6, 7 & 8 closed
133iMHz	Pins 1 & 2, 3 & 4 closed

CPU TYPE SELECTION				
Type	JP1	JP8	JPB13	JPR17
80486SX	Open	Pins 1 & 2 closed	Open	Open
80486DX	Open	Pins 1 & 2 closed	Open	Open
CX486DX2	Closed	Pins 2 & 3 closed	Open	Pins 1 & 2 closed
80486DX2	Open	Pins 1 & 2 closed	Open	Open
CX486DX4	Closed	Pins 2 & 3 closed	Open	Pins 1 & 2 closed
AM486DX4 (V8B)	Open	Pins 2 & 3 closed	Open	Open
AM486DX4 (V8T)	Open	Pins 1 & 2 closed	Pins 2 & 3 closed	Open
80486DX4 (WB)	Open	Pins 2 & 3 closed	Open	Open
80486DX4 (WT)	Open	Pins 1 & 2 closed	Open	Open
CX5X86	Open	Pins 2 & 3 closed	Open	Open
AM5X86	Open	Pins 2 & 3 closed	Open	Pins 2 & 3 closed

CPU VOLTAGE SELECTION		
Voltage	JX1	JX2
3.3v	Pins 1 & 2 closed	Pins 4 & 7, 5 & 8, 6 & 9 closed
3.45v	Pins 2 & 3 closed	Pins 4 & 7, 5 & 8, 6 & 9 closed
5v	N/A	Pins 1 & 4, 2 & 5, 3 & 6 closed

Continued on next page. . .

DATAVAN INTERNATIONAL CORPORATION
DTV-05C

... continued from previous page

PARALLEL PORT ADDRESS SELECTION	
Setting	JV2
í 378h	Pins 3 & 4 closed
278h	Pins 1 & 2 closed
3BCh	Pins 1 & 2, 3 & 4 closed
Disabled	Open

SERIAL PORT ADDRESS SELECTION	
Setting	JP102
í COM1 (3F8h)/COM2 (2F8h)	Open
COM3 (3E8h)/COM4 (2E8h)	Closed

SERIAL PORT SELECTION		
Setting	JP103	JP104
Normal pin out	Pins 2 & 3 closed	Pins 2 & 3 closed
9 th pin out with +5v for CCD	Pins 1 & 2 closed	Pins 1 & 2 closed