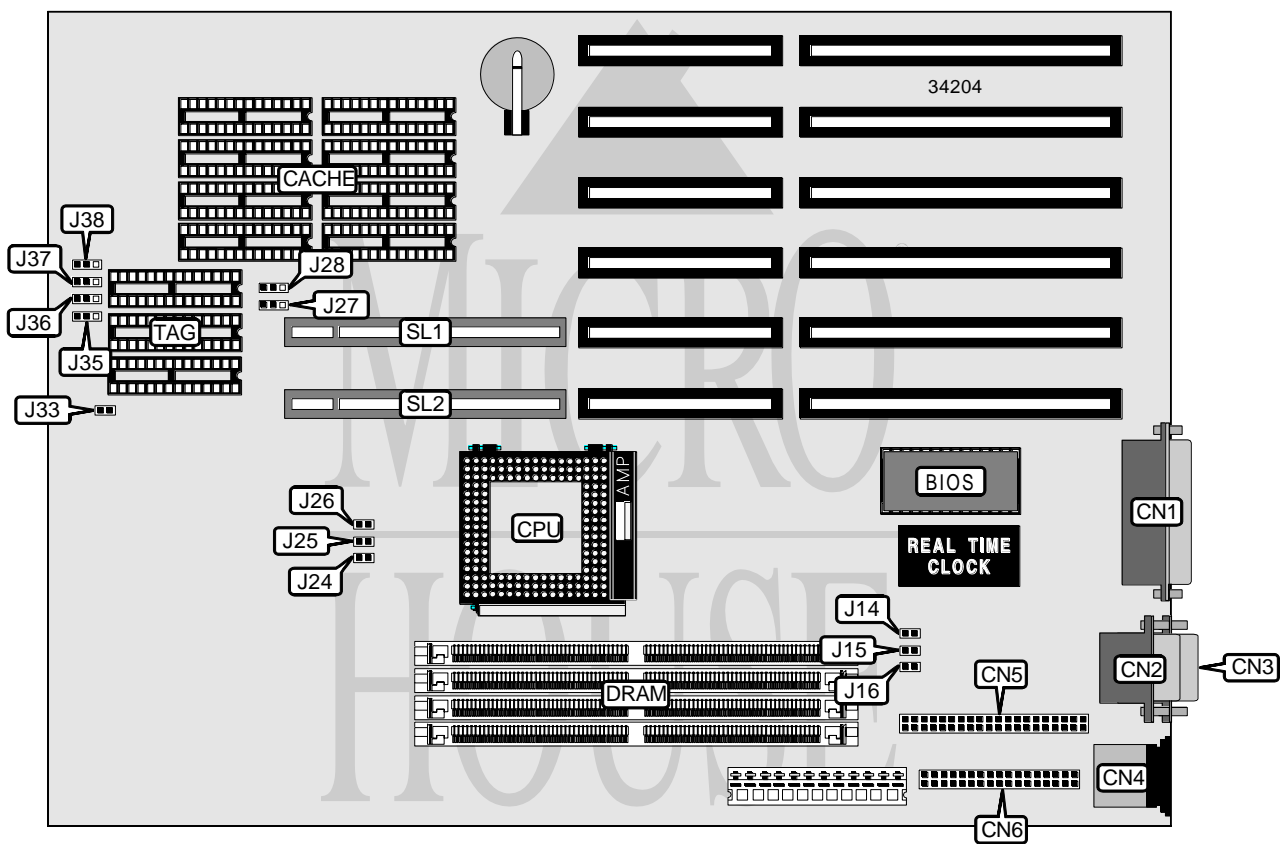


DIGITAL EQUIPMENT CORPORATION

DECPC LPX

Processor	80486SX/80486DX/80486DX2
Processor Speed	25/33/40/50(internal)/50/66(internal)MHz
Chip Set	Unidentified
Video Chip Set	None
Maximum Onboard Memory	64MB
Maximum Video Memory	None
Cache	128/256KB
BIOS	Unidentified
Dimensions	254mm x 218mm
I/O Options	32-bit VESA local bus slots (2), floppy drive interface, IDE interface, parallel port, PS/2 mouse port, serial ports (2)
NPU Options	None



CONNECTIONS			
Purpose	Location	Purpose	Location
Parallel port	CN1	IDE interface	CN5
Serial port	CN2	Floppy drive interface	CN6
Serial port	CN3	32-bit VESA local bus slots	SL1 & SL2
PS/2 mouse port	CN4		

Continued on next page. . .

DIGITAL EQUIPMENT CORPORATION
DECPC LPX

... continued from previous page

USER CONFIGURABLE SETTINGS		
Function	Label	Position
í Flash BIOS normal operation	J14	Open
Flash BIOS recovery mode	J14	Closed
í Monitor type select monochrome	J15	Open
Monitor type select color	J15	Closed
í Factory configured – do not alter	J16	Open
í VLRDY >CPURDY connects to CPU bus ready	J28	Pins 1 & 2 closed
VLRDY >LRDY synchronized through chipset	J28	Pins 2 & 3 closed
í Reset switch enabled	J33	Closed
Reset switch disabled	J33	Open

DRAM CONFIGURATION		
Size	Bank 0	Bank 1
4MB	(2) 256K x 36	(2) 256K x 36
4MB	(2) 512K x 36	None
8MB	(2) 1M x 36	None
16MB	(2) 2M x 36	None
16MB	(2) 1M x 36	(2) 1M x 36
24MB	(2) 2M x 36	(2) 1M x 36
32MB	(2) 4M x 36	None
32MB	(2) 2M x 36	(2) 2M x 36
40MB	(2) 4M x 36	(2) 1M x 36
48MB	(2) 4M x 36	(2) 2M x 36
64MB	(2) 4M x 36	(2) 4M x 36

Note: The location of banks 0 & 1 are unidentified.

CACHE CONFIGURATION			
Size	Bank 0	Bank 1	TAG
128KB	(4) 32K x 8	None	(3) 16K x 4
256KB	(4) 32K x 8	(4) 32K x 8	(3) 16K x 4

CACHE JUMPER CONFIGURATION				
Size	J35	J36	J37	J38
None	Open	Open	Open	Open
128KB	Pins 1 & 2 closed	Pins 1 & 2 closed	Pins 1 & 2 closed	Pins 1 & 2 closed
256KB	Pins 2 & 3 closed	Pins 2 & 3 closed	Pins 2 & 3 closed	Pins 2 & 3 closed

Continued on next page. . .

DIGITAL EQUIPMENT CORPORATION
 DECPC LPX

... continued from previous page

CPU SPEED SELECTION			
Speed	J24	J25	J26
25MHz	Closed	Closed	Open
33MHz	Closed	Open	Closed
40MHz	Open	Open	Closed
50MHz	Closed	Closed	Open
50MHz	Open	Open	Open
66MHz	Closed	Open	Closed

VL BUS WAIT STATE SELECTION	
Setting	J27
0	Pins 1 & 2 closed
1	Pins 2 & 3 closed