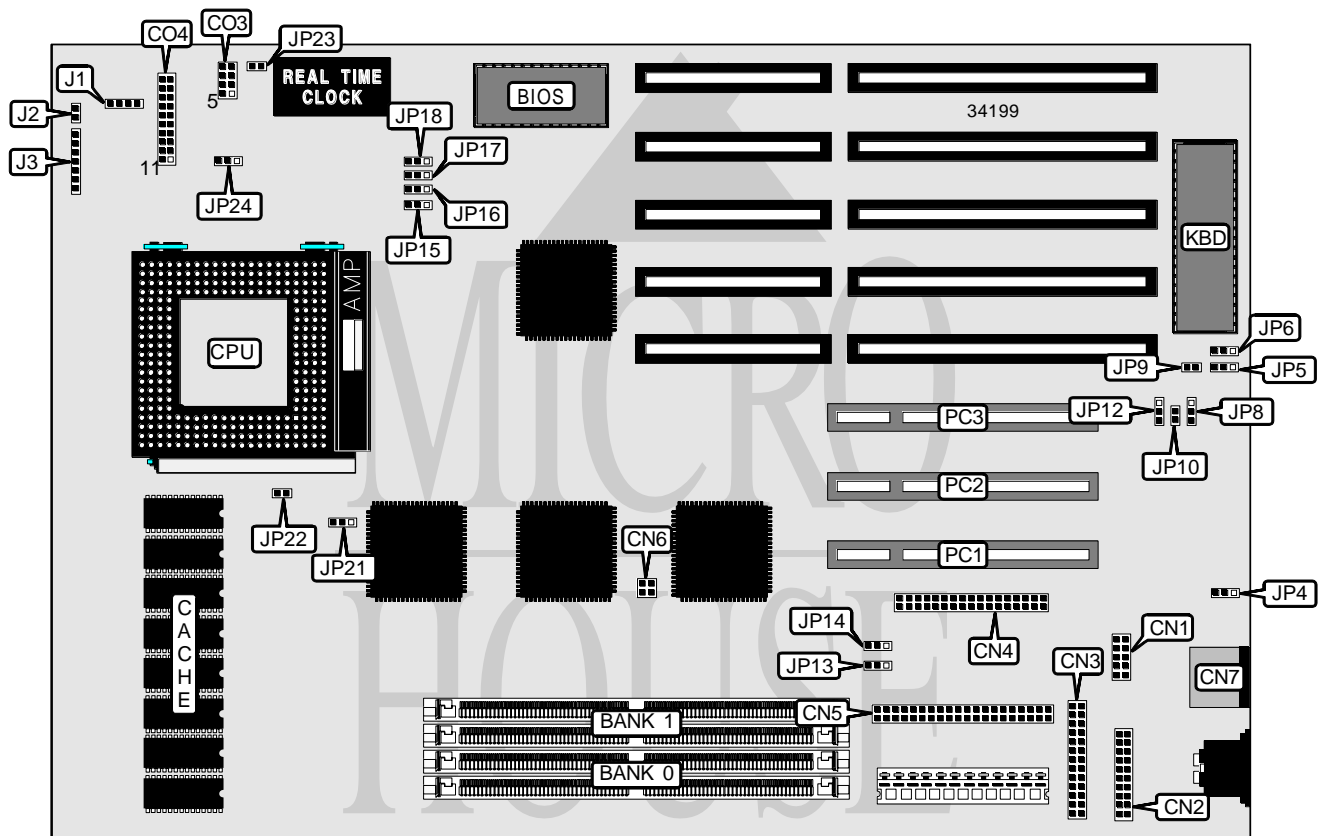


ACER, INC.
V 1 2 C

Processor	Pentium
Processor Speed	60MHz
Chip Set	Intel
Video Chip Set	None
Maximum Onboard Memory	128MB
Maximum Video Memory	None
Cache	256KB
BIOS	Acer
Dimensions	330mm x 218mm
I/O Options	32-bit PCI slots (3), floppy drive interface, IDE interface, parallel port, PS/2 mouse port, serial ports (2)
NPU Options	None



Continued on next page . . .

... continued from previous page

CONNECTIONS			
Purpose	Location	Purpose	Location
ID3P Power LED & keylock	C03 pins 1 – 4	Parallel port	CN3
ID3P Reset switch	C03 pins 7 & 8	Floppy drive interface	CN4
Power LED & keylock	C04 pins 1 - 5	IDE interface	CN5
Speaker	C04 pins 7 - 10	PS/2 mouse port	CN7
Turbo LED	C04 pins 12 & 13	IDE interface LED	J1
Turbo switch	C04 pins 15 - 17	Chassis fan power	J2
Reset switch	C04 pins 19 & 20	Keyboard & PS/2 mouse connector	J3
Serial port 1	CN1	32-bit PCI slots	PC1 – PC3
Serial port 2	CN2		

USER CONFIGURABLE SETTINGS		
Function	Label	Position
í Factory configured - do not alter	CN6	Pins 1 & 3, 2 & 4 closed
MIO CTLR enabled	JP4	Pins 1 & 2 closed
MIO CTLR disabled	JP4	Pins 2 & 3 closed
BIOS type select Acer	JP5	Pins 1 & 2 closed
BIOS type select OEM	JP5	Pins 2 & 3 closed
Password disabled	JP6	Pins 2 & 3 closed
Password enabled	JP6	Pins 1 & 2 closed
PS/2 mouse IRQ12 enabled	JP9	Closed
PS/2 mouse IRQ12 disabled	JP9	Open
ECP mode enabled	JP10	Closed
ECP mode disabled	JP10	Open
í Factory configured - do not alter	JP13	Pins 2 & 3 closed
í Factory configured - do not alter	JP14	Pins 2 & 3 closed
í Factory configured - do not alter	JP15	Pins 1 & 2 closed
í Factory configured - do not alter	JP16	Pins 2 & 3 closed
í Factory configured - do not alter	JP17	Pins 1 & 2 closed
í P54C pipeline enabled	JP21	Closed
P54C pipeline disabled	JP21	Open
í Cache type select write back	JP22	Closed
Cache type select write through	JP22	Open
í Keylock disabled	JP23	Closed
Keylock enabled	JP23	Open

Continued on next page. . .

... continued from previous page

DRAM CONFIGURATION		
Size	Bank 0	Bank 1
8MB	(2) 1M x 36	None
16MB	(2) 2M x 36	None
16MB	(2) 1M x 36	(2) 1M x 36
24MB	(2) 2M x 36	(2) 1M x 36
32MB	(2) 4M x 36	None
32MB	(2) 2M x 36	(2) 2M x 36
40MB	(2) 4M x 36	(2) 1M x 36
48MB	(2) 4M x 36	(2) 2M x 36
64MB	(2) 8M x 36	None
64MB	(2) 4M x 36	(2) 4M x 36
72MB	(2) 8M x 36	(2) 1M x 36
80MB	(2) 8M x 36	(2) 2M x 36
96MB	(2) 8M x 36	(2) 4M x 36
128MB	(2) 8M x 36	(2) 8M x 36

CACHE CONFIGURATION
Note: 256KB cache is factory installed and is not configurable.

CPU SPEED SELECTION	
Speed	JP18
60MHz	Pins 1 & 2 closed

CPU MULTIPLIER SELECTION	
Multiplier	JP24
1.5x	Pins 1 & 2 closed
2x	Pins 2 & 3 closed

DMA CHANNEL SELECTION		
Channel	JP8	JP12
1	Pins 2 & 3 closed	Pins 2 & 3 closed
3	Pins 1 & 2 closed	Pins 1 & 2 closed