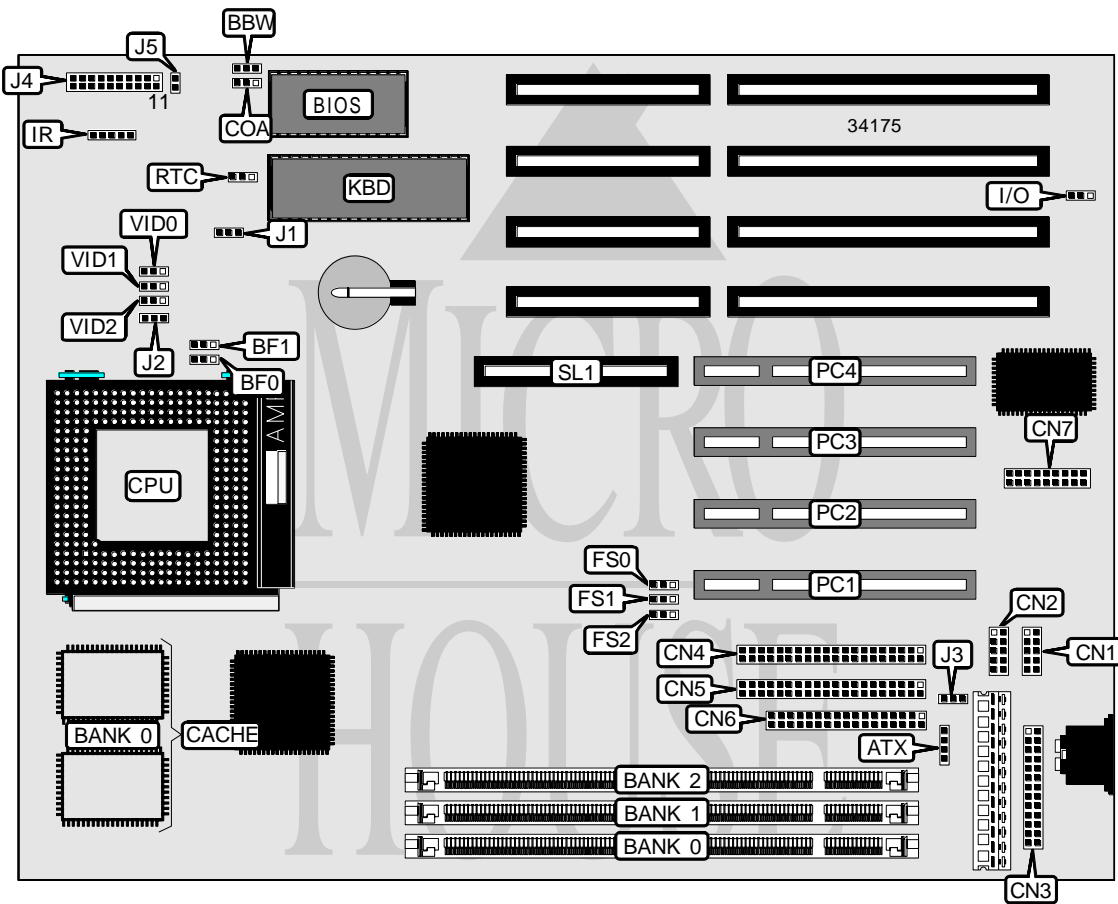


ASUS COMPUTER INTERNATIONAL

TX 97

Processor	CX M1/AM K5/Pentium
Processor Speed	75/90/100/120/133/150/166/200MHz
Chip Set	Intel
Video Chip Set	None
Maximum Onboard Memory	256MB
Maximum Video Memory	None
Cache	512KB
BIOS	Unidentified
Dimensions	330mm x 218mm
I/O Options	32-bit PCI slots (4), floppy drive interface, green PC connector, IDE interfaces (2), parallel port, serial ports (2), IR connector, MediaBus slot, PS/2 mouse/USB/IR connector
NPU Options	None



Continued on next page...

ASUS COMPUTER INTERNATIONAL

TX97

... continued from previous page

CONNECTIONS			
Purpose	Location	Purpose	Location
Power on switch	ATX	Chassis fan power	J2
Serial port 1	CN1	Chassis fan power	J3
Serial port 2	CN2	Message LED	J4 pins 2 & 3
Parallel port	CN3	Green PC connector	J4 pins 4 & 5
IDE interface 1	CN4	Power on switch	J4 pins 6 & 7
IDE interface 2	CN5	Reset switch	J4 pins 9 & 10
Floppy drive interface	CN6	Power LED & keylock	J4 pins 11 - 15
PS/2, USB, IR connector	CN7	Speaker	J4 pins 17 - 20
Chassis open alarm	COA	IDE interface LED	J5
IR connector	IR	32-bit PCI slots	PC1 – PC4
Chassis fan power	J1	MediaBus slot	SL1

USER CONFIGURABLE SETTINGS		
Function	Label	Position
í Flash BIOS write protect disabled	BBW	Pins 2 & 3 closed
Flash BIOS write protect enabled	BBW	Pins 1 & 2 closed
í On board I/O enabled	I/O	Pins 1 & 2 closed
On board I/O disabled	I/O	Pins 2 & 3 closed
í CMOS memory normal operation	RTC	Pins 2 & 3 closed
CMOS memory clear	RTC	Pins 1 & 2 closed

DIMM CONFIGURATION			
Size	Bank 0	Bank 1	Bank 2
8MB	(1) 1M x 64	None	None
16MB	(1) 2M x 64	None	None
16MB	(1) 1M x 64	(1) 1M x 64	None
24MB	(1) 2M x 64	(1) 1M x 64	None
24MB	(1) 1M x 64	(1) 1M x 64	(1) 1M x 64
32MB	(1) 4M x 64	None	None
32MB	(1) 2M x 64	(1) 2M x 64	None
32MB	(1) 1M x 64	(1) 1M x 64	(1) 2M x 64
40MB	(1) 4M x 64	(1) 1M x 64	None
40MB	(1) 2M x 64	(1) 2M x 64	(1) 1M x 64
48MB	(1) 4M x 64	(1) 2M x 64	None
48MB	(1) 2M x 64	(1) 2M x 64	(1) 2M x 64
48MB	(1) 1M x 64	(1) 1M x 64	(1) 4M x 64
64MB	(1) 8M x 64	None	None
64MB	(1) 4M x 64	(1) 4M x 64	None
72MB	(1) 8M x 64	(1) 1M x 64	None
72MB	(1) 4M x 64	(1) 4M x 64	(1) 1M x 64
80MB	(1) 8M x 64	(1) 2M x 64	None

Continued on next page...

ASUS COMPUTER INTERNATIONAL TX97

... continued from previous page

DIMM CONFIGURATION (CON'T)			
Size	Bank 0	Bank 1	Bank 2
80MB	(1) 4M x 64	(1) 4M x 64	(1) 2M x 64
96MB	(1) 8M x 64	(1) 4M x 64	None
96MB	(1) 4M x 64	(1) 4M x 64	(1) 4M x 64
128MB	(1) 8M x 64	(1) 8M x 64	None
128MB	(1) 16M x 64	None	None
136MB	(1) 16M x 64	(1) 1M x 64	None
144MB	(1) 16M x 64	(1) 2M x 64	None
160MB	(1) 16M x 64	(1) 4M x 64	None
192MB	(1) 16M x 64	(1) 8M x 64	None
256MB	(1) 16M x 64	(1) 16M x 64	None
256MB	(1) 32M x 64	None	None

CACHE CONFIGURATION	
Size	Bank 0
512KB	(2) 64K x 32

CPU SPEED SELECTION (CYRIX)							
CPU speed	Clock speed	Multiplier	BF0	BF1	FS0	FS1	FS2
166MHz	66MHz	2x	2 & 3	1 & 2	1 & 2	2 & 3	2 & 3

Note: Pins designated should be in the closed position.

CPU SPEED SELECTION (AMD)							
CPU speed	Clock speed	Multiplier	BF0	BF1	FS0	FS1	FS2
75MHz	50MHz	1.5x	1 & 2	1 & 2	2 & 3	1 & 2	2 & 3
90MHz	60MHz	1.5x	1 & 2	1 & 2	2 & 3	2 & 3	2 & 3
100MHz	66MHz	1.5x	1 & 2	1 & 2	1 & 2	2 & 3	2 & 3
120MHz	60MHz	1.5x	1 & 2	1 & 2	2 & 3	2 & 3	2 & 3
133MHz	66MHz	1.5x	1 & 2	1 & 2	1 & 2	2 & 3	2 & 3

Note: Pins designated should be in the closed position.

CPU SPEED SELECTION (INTEL)							
CPU speed	Clock speed	Multiplier	BF0	BF1	FS0	FS1	FS2
75MHz	50MHz	1.5x	1 & 2	1 & 2	2 & 3	1 & 2	2 & 3
90MHz	60MHz	1.5x	1 & 2	1 & 2	2 & 3	2 & 3	2 & 3
100MHz	66MHz	1.5x	1 & 2	1 & 2	1 & 2	2 & 3	2 & 3
120MHz	60MHz	2x	2 & 3	1 & 2	2 & 3	2 & 3	2 & 3
133MHz	66MHz	2x	2 & 3	1 & 2	1 & 2	2 & 3	2 & 3
150MHz	60MHz	2.5x	2 & 3	2 & 3	2 & 3	2 & 3	2 & 3
166MHz	66MHz	2.5x	2 & 3	2 & 3	1 & 2	2 & 3	2 & 3
200MHz	66MHz	3x	1 & 2	2 & 3	1 & 2	2 & 3	2 & 3

Note: Pins designated should be in the closed position.

Continued on next page...

ASUS COMPUTER INTERNATIONAL
TX97

... continued from previous page

CPU VOLTAGE SELECTION			
Voltage	VID0	VID1	VID2
2.5v	Pins 1 & 2 closed	Pins 2 & 3 closed	Pins 1 & 2 closed
2.7v	Pins 1 & 2 closed	Pins 1 & 2 closed	Pins 1 & 2 closed
2.8v	Pins 2 & 3 closed	Pins 2 & 3 closed	Pins 2 & 3 closed
2.9v	Pins 1 & 2 closed	Pins 2 & 3 closed	Pins 2 & 3 closed
3.4v	Pins 2 & 3 closed	Pins 1 & 2 closed	Pins 2 & 3 closed
3.5v	Pins 1 & 2 closed	Pins 1 & 2 closed	Pins 2 & 3 closed