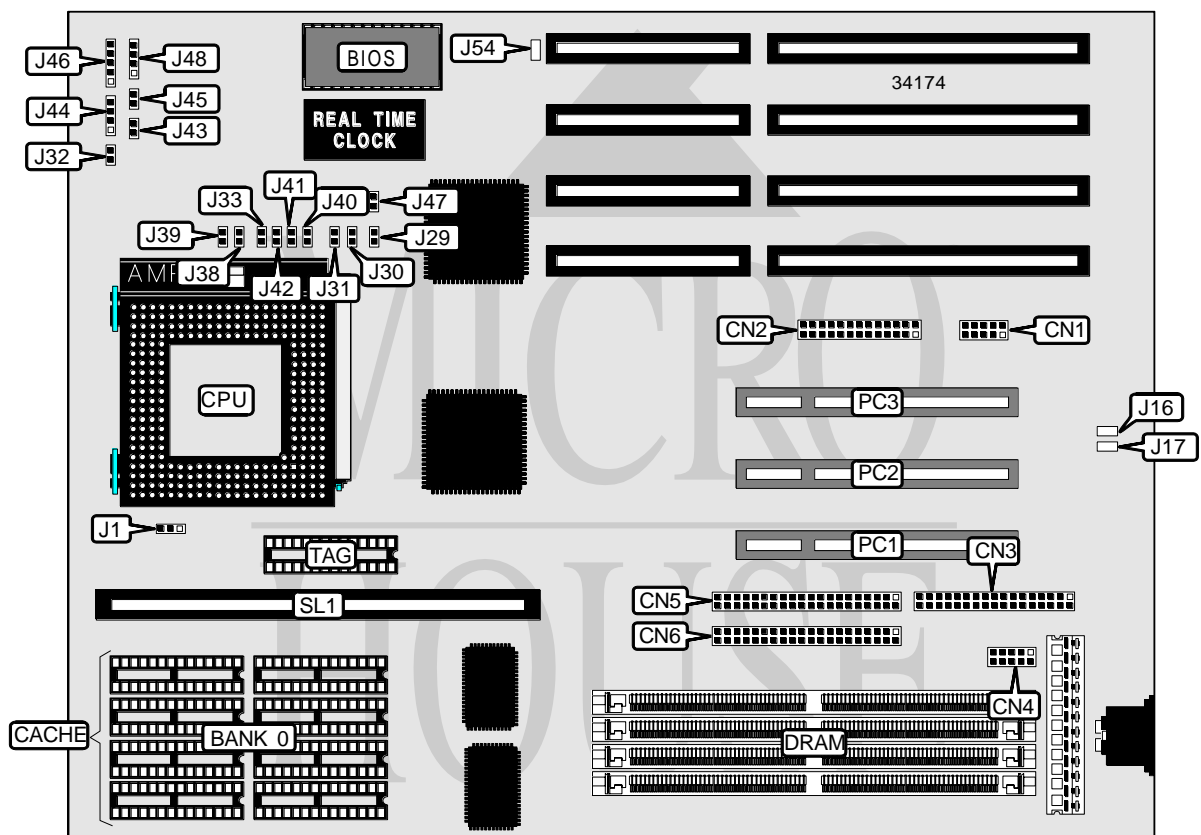


AMPTRON INTERNATIONAL, INC.

PM-7700C

Processor	CX M1/IBM/Pentium
Processor Speed	75/90/100/120/133/150/166/180/200MHz
Chip Set	Intel
Video Chip Set	None
Maximum Onboard Memory	128MB (EDO supported)
Maximum Video Memory	None
Cache	256/512KB
BIOS	Award
Dimensions	330mm x 218mm
I/O Options	32-bit PCI slots (3), green PC connector, floppy drive interface, IDE interfaces (2), parallel port, serial ports (2), cache slot
NPU Options	None



Continued on next page . . .

AMPTRON INTERNATIONAL, INC.
 P M - 7 7 0 0 C

... continued from previous page

CONNECTIONS			
Purpose	Location	Purpose	Location
Serial port 1	CN1	Turbo switch	J43
Parallel port	CN2	IDE interface LED	J44
Floppy drive interface	CN3	Turbo LED	J45
Serial port 2	CN4	Power LED & keylock	J46
IDE interface 2	CN5	Speaker	J48
IDE interface 1	CN6	32-bit PCI slots	PC1 – PC3
Green PC connector	J29	Cache slot	SL1
Reset switch	J32		

USER CONFIGURABLE SETTINGS		
Function	Label	Position
í Factory configured - do not alter	J16	Unidentified
í Factory configured - do not alter	J17	Unidentified
í Factory configured - do not alter	J39	Unidentified
í CMOS memory normal operation	J47	Open
CMOS memory clear	J47	Closed
í Factory configured - do not alter	J54	Unidentified

DRAM CONFIGURATION		
Size	Bank 0	Bank 1
2MB	(2) 256K x 36	None
4MB	(2) 512K x 36	None
4MB	(2) 256K x 36	(2) 256K x 36
6MB	(2) 512K x 36	(2) 256K x 36
8MB	(2) 1M x 36	None
8MB	(2) 512K x 36	(2) 512K x 36
10MB	(2) 1M x 36	(2) 256K x 36
12MB	(2) 1M x 36	(2) 512K x 36
16MB	(2) 2M x 36	None
16MB	(2) 1M x 36	(2) 1M x 36
18MB	(2) 2M x 36	(2) 256K x 36
20MB	(2) 512K x 36	(2) 2M x 36
24MB	(2) 2M x 36	(2) 1M x 36
32MB	(2) 4M x 36	None
32MB	(2) 2M x 36	(2) 2M x 36
34MB	(2) 4M x 36	(2) 256K x 36
36MB	(2) 512K x 36	(2) 4M x 36
40MB	(2) 4M x 36	(2) 1M x 36
48MB	(2) 2M x 36	(2) 4M x 36
64MB	(2) 8M x 36	None
64MB	(2) 4M x 36	(2) 4M x 36
66MB	(2) 8M x 36	(2) 256K x 36

Continued on next page...

AMPTRON INTERNATIONAL, INC.
 P M - 7 7 0 0 C

... continued from previous page

DRAM CONFIGURATION (CON'T)		
Size	Bank 0	Bank 1
68MB	(2) 512K x 36	(2) 8M x 36
72MB	(2) 8M x 36	(2) 1M x 36
80MB	(2) 2M x 36	(2) 8M x 36
96MB	(2) 8M x 36	(2) 4M x 36
128MB	(2) 8M x 36	(2) 8M x 36

Note: Board accepts EDO memory. Banks are interchangeable.

CACHE CONFIGURATION			
Size	Bank 0	SL1	TAG
256KB (A)	(8) 32K x 8	Not installed	(1) 8K x 8
256KB (B)	None	256KB module installed	None
512KB (A)	(8) 64K x 8	Not installed	(1) 32K x 8
512KB (B)	None	512KB module installed	None

CACHE JUMPER CONFIGURATION	
Size	J1
256KB (A)	Pins 2 & 3 closed
512KB (A)	Pins 1 & 2 closed

CPU SPEED SELECTION (CYRIX)						
CPU speed	Clock speed	Multiplier	J30	J31	J33	J38
120MHz	50MHz	2x	Closed	Closed	Closed	Open
150MHz	60MHz	2x	Closed	Open	Closed	Open

CPU SPEED SELECTION (IBM)						
CPU speed	Clock speed	Multiplier	J30	J31	J33	J38
120MHz	50MHz	2x	Closed	Closed	Closed	Open
150MHz	60MHz	2x	Closed	Open	Closed	Open

CPU SPEED SELECTION (INTEL)						
CPU speed	Clock speed	Multiplier	J30	J31	J33	J38
75MHz	50MHz	1.5x	Closed	Closed	Open	Open
90MHz	60MHz	1.5x	Closed	Open	Open	Open
100MHz	66MHz	1.5x	Open	Closed	Open	Open
120MHz	60MHz	2x	Closed	Open	Closed	Open
133MHz	66MHz	2x	Open	Closed	Closed	Open
150MHz	60MHz	2.5x	Closed	Open	Closed	Closed
166MHz	66MHz	2.5x	Open	Closed	Closed	Closed
180MHz	60MHz	3x	Closed	Open	Open	Closed
200MHz	66MHz	3x	Open	Closed	Open	Closed

Continued on next page...

AMPTRON INTERNATIONAL, INC.
P M - 7 7 0 0 C

... continued from previous page

CPU VOLTAGE SELECTION			
Voltage	J40	J41	J42
3.35v	Closed	Open	Open
3.46v	Open	Closed	Open
3.6v	Open	Open	Closed