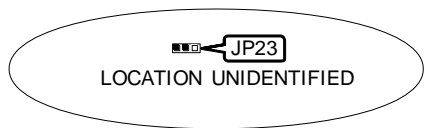
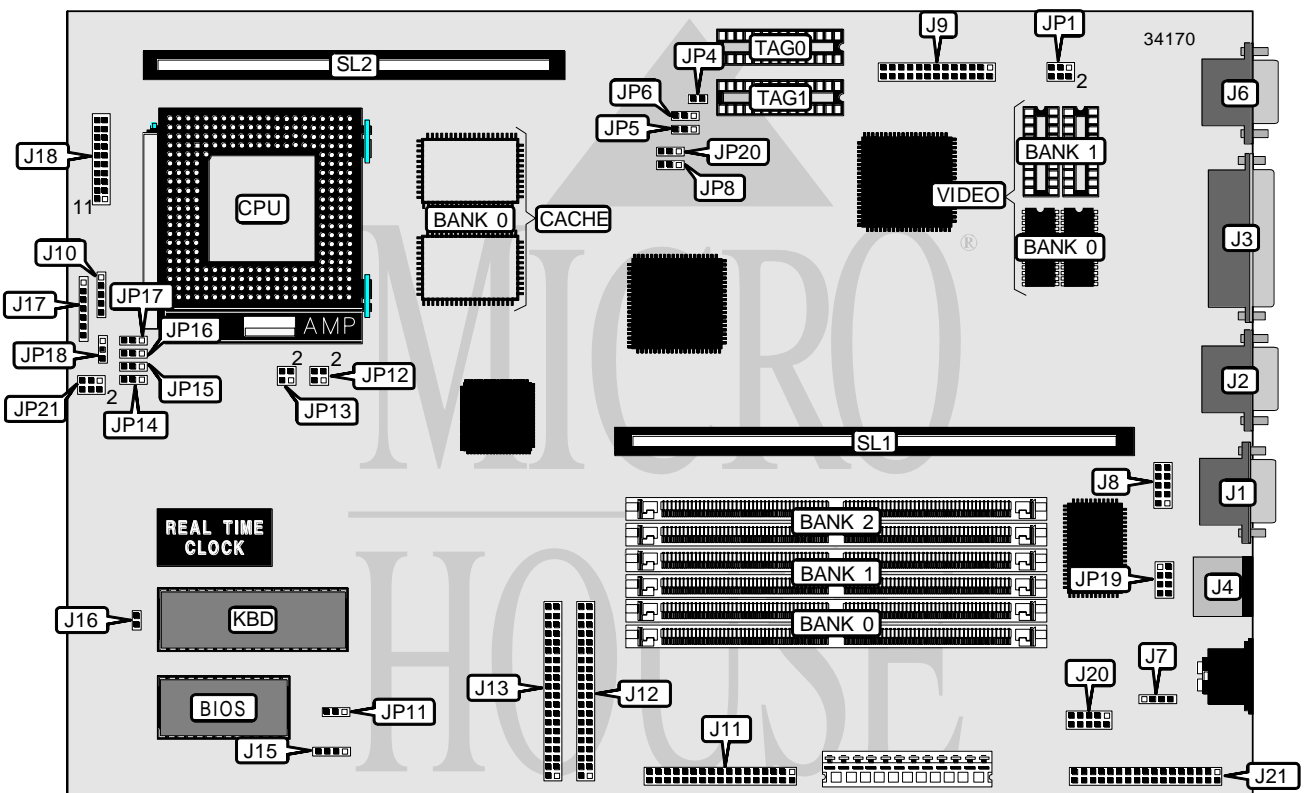


# ELITEGROUP COMPUTER SYSTEMS, INC.

## P5HX-LA

|                               |  |
|-------------------------------|--|
| <b>Processor</b>              | CX M1/Pentium  |
| <b>Processor Speed</b>        | 75/90/100/120/133/150/166/200MHz   |
| <b>Chip Set</b>               | Intel  |
| <b>Video Chip Set</b>         | ATI  |
| <b>Maximum Onboard Memory</b> | 384MB  |
| <b>Maximum Video Memory</b>   | 2MB  |
| <b>Cache</b>                  | 256/512KB  |
| <b>BIOS</b>                   | Award  |
| <b>Dimensions</b>             | 330mm x 218mm  |
| <b>I/O Options</b>            | Floppy drive interface, green PC connector, IDE interfaces (2), parallel port, PS/2 mouse port, serial ports (2), VGA feature connector, VGA port, riser slot, cache slot, IR connectors (2), USB connector, CD-ROM audio connector, wavetable connector, Modem Blaster Pro connector, audio interface connector |
| <b>NPU Options</b>            | None   |



Continued on next page...

ELITEGROUP COMPUTER SYSTEMS, INC.  
P 5 H X - L A

... continued from previous page

| CONNECTIONS               |          |                             |                  |
|---------------------------|----------|-----------------------------|------------------|
| Purpose                   | Location | Purpose                     | Location         |
| Serial port 1             | J1       | IR connector (Fast)         | J17              |
| Serial port 2             | J2       | Turbo LED                   | J18/pins 2 & 3   |
| Parallel port             | J3       | Green PC connector          | J18/pins 4 & 5   |
| PS/2 mouse port           | J4       | Turbo switch                | J18/pins 6 & 7   |
| VGA port                  | J6       | Reset switch                | J18/pins 9 & 10  |
| CD-ROM audio in connector | J7       | Power LED & keylock         | J18/pins 11 - 15 |
| USB connector             | J8       | Speaker                     | J18/pins 17 - 20 |
| VGA feature connector     | J9       | Modem Blaster Pro connector | J20              |
| IR connector (Intel)      | J10      | Audio interface connector   | J21              |
| Floppy drive interface    | J11      | Chassis fan power           | JP18             |
| IDE interface 1           | J12      | Wavetable connector         | JP19             |
| IDE interface 2           | J13      | Riser slot                  | SL1              |
| IDE interface LED         | J15      | Cache slot                  | SL2              |
| Green PC LED              | J16      |                             |                  |

| USER CONFIGURABLE SETTINGS     |                |                   |
|--------------------------------|----------------|-------------------|
| Function                       | Label          | Position          |
| On board video enabled         | JP1/pins 1 & 2 | Open              |
| On board video disabled        | JP1/pins 1 & 2 | Closed            |
| VGA IRQ enabled                | JP1/pins 3 & 4 | Open              |
| VGA IRQ disabled               | JP1/pins 3 & 4 | Closed            |
| Spare I/O decoding             | JP1/pins 5 & 6 | Open              |
| Block I/O decoding             | JP1/pins 5 & 6 | Closed            |
| í CMOS memory normal operation | JP11           | Pins 2 & 3 closed |
| CMOS memory clear              | JP11           | Pins 1 & 2 closed |
| Audio enabled                  | JP23           | Pins 2 & 3 closed |
| Audio disabled                 | JP23           | Pins 1 & 2 closed |

| DRAM CONFIGURATION |             |             |             |
|--------------------|-------------|-------------|-------------|
| Size               | Bank 0      | Bank 1      | Bank 2      |
| 8MB                | (2) 1M x 36 | None        | None        |
| 16MB               | (2) 1M x 36 | (2) 1M x 36 | None        |
| 16MB               | (2) 2M x 36 | None        | None        |
| 24MB               | (2) 1M x 36 | (2) 1M x 36 | (2) 1M x 36 |
| 24MB               | (2) 2M x 36 | (2) 1M x 36 | None        |
| 32MB               | (2) 2M x 36 | (2) 1M x 36 | (2) 1M x 36 |
| 32MB               | (2) 2M x 36 | (2) 2M x 36 | None        |
| 32MB               | (2) 4M x 36 | None        | None        |
| 40MB               | (2) 4M x 36 | (2) 1M x 36 | None        |
| 48MB               | (2) 2M x 36 | (2) 2M x 36 | (2) 2M x 36 |
| 48MB               | (2) 4M x 36 | (2) 1M x 36 | (2) 1M x 36 |
| 48MB               | (2) 4M x 36 | (2) 2M x 36 | None        |

Continued on next page...

ELITEGROUP COMPUTER SYSTEMS, INC.  
P5HX-LA

... continued from previous page

| DRAM CONFIGURATION (CON'T) |              |              |              |
|----------------------------|--------------|--------------|--------------|
| Size                       | Bank 0       | Bank 1       | Bank 2       |
| 64MB                       | (2) 4M x 36  | (2) 2M x 36  | (2) 2M x 36  |
| 64MB                       | (2) 4M x 36  | (2) 4M x 36  | None         |
| 64MB                       | (2) 8M x 36  | None         | None         |
| 72MB                       | (2) 8M x 36  | (2) 1M x 36  | None         |
| 80MB                       | (2) 8M x 36  | (2) 1M x 36  | (2) 1M x 36  |
| 80MB                       | (2) 8M x 36  | (2) 2M x 36  | None         |
| 96MB                       | (2) 4M x 36  | (2) 4M x 36  | (2) 4M x 36  |
| 96MB                       | (2) 8M x 36  | (2) 2M x 36  | (2) 2M x 36  |
| 96MB                       | (2) 8M x 36  | (2) 4M x 36  | None         |
| 128MB                      | (2) 8M x 36  | (2) 4M x 36  | (2) 4M x 36  |
| 128MB                      | (2) 8M x 36  | (2) 8M x 36  | None         |
| 128MB                      | (2) 16M x 36 | None         | None         |
| 136MB                      | (2) 16M x 36 | (2) 1M x 36  | None         |
| 144MB                      | (2) 16M x 36 | (2) 1M x 36  | (2) 1M x 36  |
| 160MB                      | (2) 16M x 36 | (2) 4M x 36  | None         |
| 160MB                      | (2) 16M x 36 | (2) 2M x 36  | (2) 2M x 36  |
| 192MB                      | (2) 8M x 36  | (2) 8M x 36  | (2) 8M x 36  |
| 192MB                      | (2) 16M x 36 | (2) 4M x 36  | (2) 4M x 36  |
| 192MB                      | (2) 16M x 36 | (2) 4M x 36  | (2) 4M x 36  |
| 256MB                      | (2) 16M x 36 | (2) 8M x 36  | (2) 8M x 36  |
| 256MB                      | (2) 16M x 36 | (2) 16M x 36 | None         |
| 384MB                      | (2) 16M x 36 | (2) 16M x 36 | (2) 16M x 36 |

| CACHE CONFIGURATION |              |                        |               |               |
|---------------------|--------------|------------------------|---------------|---------------|
| Size                | Bank 0       | SL1                    | TAG0          | TAG1          |
| 256KB (A)           | (2) 32K x 32 | Not installed          | (1) 8K/32 x 8 | None          |
| 256KB (B)           | None         | 256KB module installed | None          | None          |
| 512KB (A)           | (2) 32K x 32 | 256KB module installed | (1) 8K/32 x 8 | (1) 8K/32 x 8 |
| 512KB (B)           | None         | 512KB module installed | None          | None          |

| CACHE JUMPER CONFIGURATION |        |                   |
|----------------------------|--------|-------------------|
| Size                       | JP4    | JP12              |
| 256KB (A)                  | Closed | Pins 1 & 2 closed |
| 256KB (B)                  | Open   | Pins 1 & 2 closed |
| 512KB (A)                  | Closed | Pins 3 & 4 closed |
| 512KB (B)                  | Open   | Pins 3 & 4 closed |

| VIDEO MEMORY CONFIGURATION |               |               |
|----------------------------|---------------|---------------|
| Size                       | Bank 0        | Bank 1        |
| 1MB                        | (2) 256K x 16 | None          |
| 2MB                        | (2) 256K x 16 | (2) 256K x 16 |

Continued on next page. . .

ELITEGROUP COMPUTER SYSTEMS, INC.  
P5HX-LA

... continued from previous page

| CPU SPEED SELECTION (CYRIX) |             |            |       |       |       |       |
|-----------------------------|-------------|------------|-------|-------|-------|-------|
| CPU speed                   | Clock speed | Multiplier | JP5   | JP6   | JP8   | JP14  |
| 120MHz                      | 50MHz       | 2x         | 2 & 3 | 1 & 2 | 2 & 3 | 1 & 2 |
| 133MHz                      | 55MHz       | 2x         | 2 & 3 | 1 & 2 | 1 & 2 | 1 & 2 |
| 150MHz                      | 60MHz       | 2x         | 2 & 3 | 1 & 2 | 1 & 2 | 1 & 2 |
| 166MHz                      | 66MHz       | 2x         | 2 & 3 | 1 & 2 | 2 & 3 | 1 & 2 |

Note: Pins designated should be in the closed position.

| CPU SPEED SELECTION (CYRIX, CON'T) |             |            |       |       |       |       |
|------------------------------------|-------------|------------|-------|-------|-------|-------|
| CPU speed                          | Clock speed | Multiplier | JP15  | JP16  | JP17  | JP20  |
| 120MHz                             | 50MHz       | 2x         | 1 & 2 | 1 & 2 | 1 & 2 | 2 & 3 |
| 133MHz                             | 55MHz       | 2x         | 1 & 2 | 1 & 2 | 1 & 2 | 1 & 2 |
| 150MHz                             | 60MHz       | 2x         | 1 & 2 | 1 & 2 | 1 & 2 | 2 & 3 |
| 166MHz                             | 66MHz       | 2x         | 1 & 2 | 1 & 2 | 1 & 2 | 1 & 2 |

Note: Pins designated should be in the closed position.

| CPU SPEED SELECTION (INTEL) |             |            |       |       |       |       |
|-----------------------------|-------------|------------|-------|-------|-------|-------|
| CPU speed                   | Clock speed | Multiplier | JP5   | JP6   | JP8   | JP14  |
| 75MHz                       | 50MHz       | 1.5x       | 1 & 2 | 1 & 2 | 2 & 3 | 1 & 2 |
| 90MHz                       | 60MHz       | 1.5x       | 1 & 2 | 1 & 2 | 1 & 2 | 1 & 2 |
| 100MHz                      | 66MHz       | 1.5x       | 1 & 2 | 1 & 2 | 2 & 3 | 1 & 2 |
| 120MHz                      | 60MHz       | 2x         | 2 & 3 | 1 & 2 | 1 & 2 | 1 & 2 |
| 133MHz                      | 66MHz       | 2x         | 2 & 3 | 1 & 2 | 2 & 3 | 1 & 2 |
| 150MHz                      | 60MHz       | 2.5x       | 2 & 3 | 2 & 3 | 1 & 2 | 1 & 2 |
| 166MHz                      | 66MHz       | 2.5x       | 2 & 3 | 2 & 3 | 2 & 3 | 1 & 2 |
| 166MHz (P55C)               | 66MHz       | 2.5x       | 2 & 3 | 2 & 3 | 2 & 3 | 2 & 3 |
| 200MHz                      | 66MHz       | 3x         | 1 & 2 | 2 & 3 | 2 & 3 | 1 & 2 |
| 200MHz (P55C)               | 66MHz       | 3x         | 1 & 2 | 2 & 3 | 2 & 3 | 2 & 3 |

Note: Pins designated should be in the closed position.

| CPU SPEED SELECTION (INTEL, CON'T) |             |            |       |       |       |       |
|------------------------------------|-------------|------------|-------|-------|-------|-------|
| CPU speed                          | Clock speed | Multiplier | JP15  | JP16  | JP17  | JP20  |
| 75MHz                              | 50MHz       | 1.5x       | 1 & 2 | 1 & 2 | 1 & 2 | 2 & 3 |
| 90MHz                              | 60MHz       | 1.5x       | 1 & 2 | 1 & 2 | 1 & 2 | 2 & 3 |
| 100MHz                             | 66MHz       | 1.5x       | 1 & 2 | 1 & 2 | 1 & 2 | 1 & 2 |
| 120MHz                             | 60MHz       | 2x         | 1 & 2 | 1 & 2 | 1 & 2 | 2 & 3 |
| 133MHz                             | 66MHz       | 2x         | 1 & 2 | 1 & 2 | 1 & 2 | 1 & 2 |
| 150MHz                             | 60MHz       | 2.5x       | 1 & 2 | 1 & 2 | 1 & 2 | 2 & 3 |
| 166MHz                             | 66MHz       | 2.5x       | 1 & 2 | 1 & 2 | 1 & 2 | 1 & 2 |
| 166MHz (P55C)                      | 66MHz       | 2.5x       | 2 & 3 | 2 & 3 | 2 & 3 | 1 & 2 |
| 200MHz                             | 66MHz       | 3x         | 1 & 2 | 1 & 2 | 1 & 2 | 1 & 2 |
| 200MHz (P55C)                      | 66MHz       | 3x         | 2 & 3 | 2 & 3 | 2 & 3 | 1 & 2 |

Note: Pins designated should be in the closed position.

Continued on next page...

ELITEGROUP COMPUTER SYSTEMS, INC.  
P5HX-LA

... continued from previous page

| CPU VOLTAGE SELECTION |        |                   |                   |
|-----------------------|--------|-------------------|-------------------|
| Voltage               | V core | JP13              | JP21              |
| 3.3v                  | 2.5v   | Pins 1 & 2 closed | Pins 1 & 2 closed |
| 3.3v                  | 2.8v   | Pins 1 & 2 closed | Pins 3 & 4 closed |
| 3.3v                  | 2.9v   | Pins 1 & 2 closed | Pins 5 & 6 closed |
| 3.52v                 | 2.5v   | Pins 3 & 4 closed | Pins 1 & 2 closed |
| 3.52v                 | 2.8v   | Pins 3 & 4 closed | Pins 3 & 4 closed |
| 3.52v                 | 2.9v   | Pins 3 & 4 closed | Pins 5 & 6 closed |