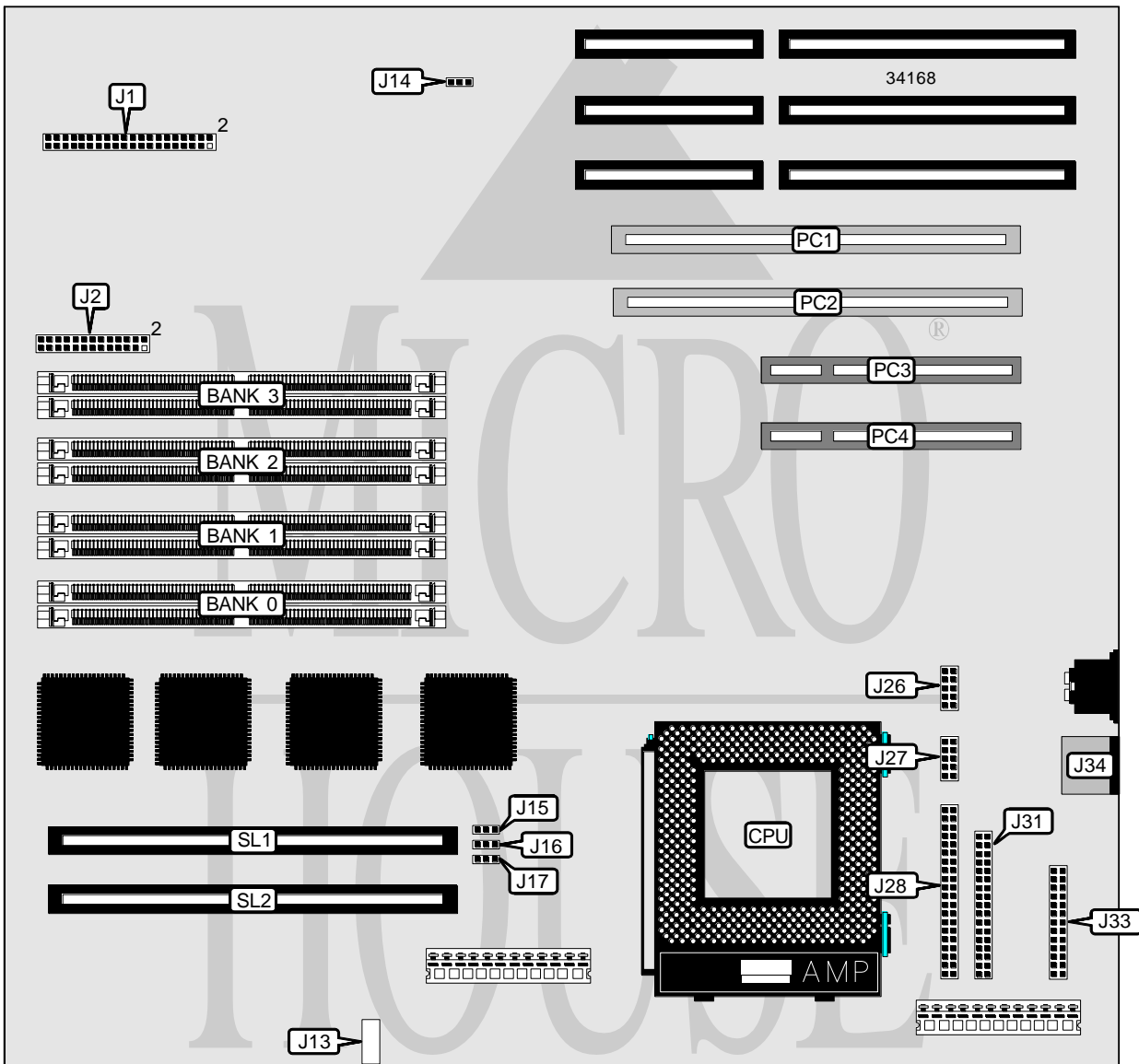


DIGITAL EQUIPMENT CORPORATION DIGITAL 21164

Processor	Alpha
Processor Speed	266/300/333MHz
Chip Set	DEC
Video Chip Set	None
Maximum Onboard Memory	512MB
Maximum Video Memory	None
Cache	2048/4096/8192KB
BIOS	Unidentified
Dimensions	332mm x 307mm
I/O Options	64-bit PCI slots (2), 32-bit PCI slots (2), floppy drive interface, IDE interface, parallel port, PS/2 mouse port, serial ports (2), cache slots (2)
NPU Options	None



Continued on next page...

DIGITAL EQUIPMENT CORPORATION
 DIGITAL 21164

... continued from previous page

CONNECTIONS			
Purpose	Location	Purpose	Location
Chassis fan power	J2/pins 3 & 5	Serial port 1	J27
Chassis fan power	J2/pins 7 & 9	IDE interface	J28
Halt connector	J2/pins 8 & 10	Floppy drive interface	J31
Chassis fan power	J2/pins 11 & 13	Parallel port	J33
Reset switch	J2/pins 12 & 14	PS/2 mouse port	J34
IDE interface LED	J2/pins 15 & 17	64-bit PCI slots	PC1 & PC2
Keylock	J2/pins 18 & 20	32-bit PCI slots	PC3 & PC4
Speaker	J2/pins 19,21,23,25	Cache slot	SL1
Serial port 2	J26	Cache slot	SL2

USER CONFIGURABLE SETTINGS		
Function	Label	Position
í Factory configured - do not alter	J1/pins 9 & 10	N/A
í SROM test disabled	J1/pins 23 & 24	Open
SROM test enabled	J1/pins 23 & 24	Closed
í Loaded image select alternate images loaded	J1/pins 25 & 26	Closed
Loaded image select first image loaded	J1/pins 25 & 26	Open
í Cache speed select nominal read speed	J1/pins 29 & 30	Open
Cache speed select read speed 1 cycle faster	J1/pins 29 & 30	Closed
í Factory configured - do not alter	J1/pins 31 & 32	N/A
í Factory configured - do not alter	J1/pins 33 & 34	N/A
í Factory configured - do not alter	J1/pins 35 & 36	N/A
í Factory configured - do not alter	J1/pins 37 & 38	N/A
í Factory configured - do not alter	J1/pins 39 & 40	N/A
í SROM test connector	J13	N/A
í Flash BIOS write protect disabled	J14	Pins 2 & 3 closed
Flash BIOS write protect enabled	J14	Pins 1 & 2 closed

DRAM CONFIGURATION				
Size	Bank 0	Bank 1	Bank 2	Bank 3
32MB	(2) 1M x 36	(2) 1M x 36	(2) 1M x 36	(2) 1M x 36
64MB	(2) 2M x 36	(2) 2M x 36	(2) 2M x 36	(2) 2M x 36
128MB	(2) 4M x 36	(2) 4M x 36	(2) 4M x 36	(2) 4M x 36
256MB	(2) 8M x 36	(2) 8M x 36	(2) 8M x 36	(2) 8M x 36
512MB	(2) 16M x 36	(2) 16M x 36	(2) 16M x 36	(2) 16M x 36

CACHE CONFIGURATION		
Size	SL1	SL2
2MB	2MB	None
4MB	4MB	None
8MB	4MB	4MB

Note: The sizes of the cache modules are unidentified.

Continued on next page...

DIGITAL EQUIPMENT CORPORATION
DIGITAL 21164

... continued from previous page

CACHE JUMPER CONFIGURATION			
Size	J1/pins 11 & 12	J1/pins 13 & 14	J1/pins 15 & 16
2MB	Closed	Open	Open
4MB	Open	Closed	Closed
8MB	Open	Closed	Open

CACHE ADDRESS CONFIGURATION			
Size	J15	J16	J17
2MB	Pins 1 & 2 closed	Pins 2 & 3 closed	Pins 2 & 3 closed
4MB	Pins 1 & 2 closed	Pins 1 & 2 closed	Pins 2 & 3 closed
8MB	Pins 1 & 2 closed	Pins 1 & 2 closed	Pins 1 & 2 closed

CACHE SPEED CONFIGURATION			
Speed	J1/pins 17 & 18	J1/pins 19 & 20	J1/pins 21 & 22
6ns	Closed	Closed	Open
8ns	Closed	Open	Closed
10ns	Closed	Open	Open
12ns	Open	Closed	Closed
15ns	Open	Closed	Open

CPU DIVISOR SELECTION				
Divisor	J1/pins 1 & 2	J1/pins 3 & 4	J1/pins 5 & 6	J1/pins 7 & 8
3	Closed	Closed	Open	Open
4	Closed	Open	Closed	Closed
5	Closed	Open	Closed	Open
6	Closed	Open	Open	Closed
7	Closed	Open	Open	Open
8 (266MHz)	Open	Closed	Closed	Closed
9 (300MHz)	Open	Closed	Closed	Open
10 (333MHz)	Open	Closed	Open	Closed
11	Open	Closed	Open	Open
12	Open	Open	Closed	Closed
13	Open	Open	Closed	Open
14	Open	Open	Open	Closed
15	Open	Open	Open	Open