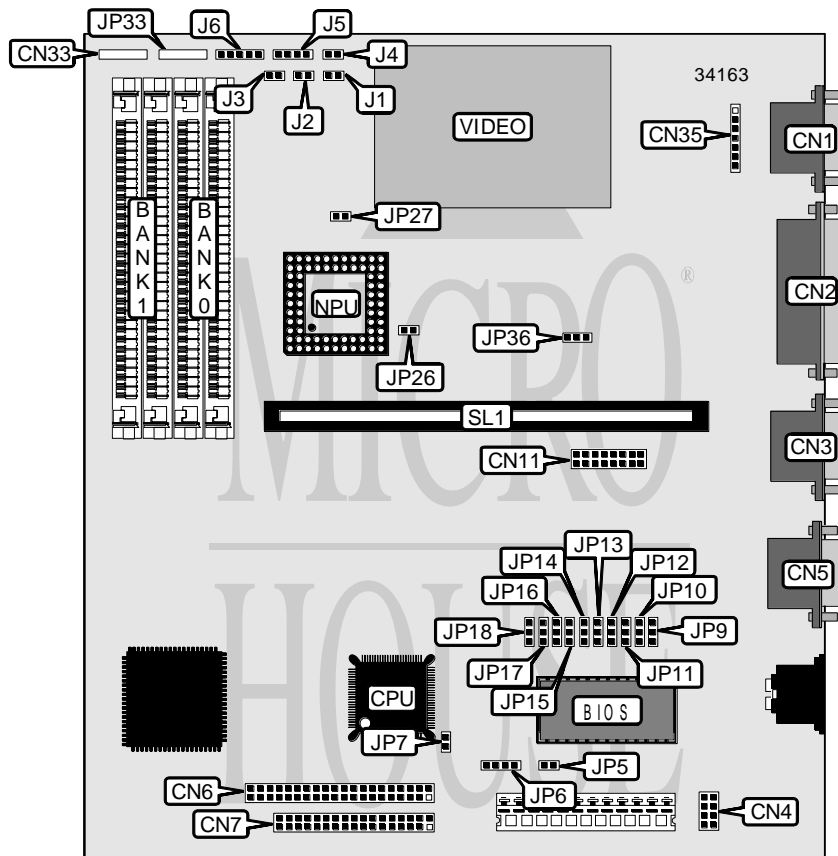


FORCOM TECHNOLOGY CORPORATION

FT - 3 8 6 B L

| | |
|-------------------------------|---|
| Processor | 80386SX/CX486SLC |
| Processor Speed | 25/33/40MHz |
| Chip Set | ALI |
| Video Chip Set | Cirrus Logic |
| Maximum Onboard Memory | 16MB |
| Maximum Video Memory | 1MB |
| Cache | None |
| BIOS | AMI |
| Dimensions | 220mm x 220mm |
| I/O Options | Floppy drive interface, IDE interface, game port, parallel port, serial ports (2), VGA connector, riser slot |
| NPU Options | 80387SX |



Continued on next page. . .

FORCOM TECHNOLOGY CORPORATION

FT - 3 8 6 B L

... continued from previous page

| CONNECTIONS | | | |
|------------------------------|----------|---------------------|----------|
| Purpose | Location | Purpose | Location |
| VGA port | CN1 | Turbo LED | J1 |
| Parallel port | CN2 | Turbo switch | J2 |
| Serial port 2 | CN3 | IDE interface LED | J3 |
| Auxiliary keyboard connector | CN4 | Reset switch | J4 |
| Serial port 1 | CN5 | Speaker | J5 |
| IDE interface | CN6 | Power LED & keylock | J6 |
| Floppy drive interface | CN7 | External battery | JP6 |
| Game port | CN11 | LED connector | JP33 |
| VGA connector | CN35 | Riser slot | SL1 |

| USER CONFIGURABLE SETTINGS | | |
|--|-------|-------------------|
| Function | Label | Position |
| í Factory configured – do not alter | CN33 | Unidentified |
| Monitor type select color | JP5 | Open |
| Monitor type select monochrome | JP5 | Closed |
| í CMOS memory normal operation | JP7 | Open |
| CMOS memory clear | JP7 | Closed |
| í Serial port 1 enabled | JP9 | Pins 1 & 2 closed |
| Serial port 1 disabled | JP9 | Pins 2 & 3 closed |
| í Parallel port enabled | JP10 | Pins 1 & 2 closed |
| Parallel port disabled | JP10 | Pins 2 & 3 closed |
| í IDE interface enabled | JP11 | Pins 1 & 2 closed |
| IDE interface disabled | JP11 | Pins 2 & 3 closed |
| í Serial port 1 address select 3F8H – 3FFH | JP12 | Pins 1 & 2 closed |
| Serial port 1 address select 3E8H – 3EFH | JP12 | Pins 2 & 3 closed |
| í Floppy drive interface enabled | JP13 | Pins 1 & 2 closed |
| Floppy drive interface disabled | JP13 | Pins 2 & 3 closed |
| í HDC enabled | JP14 | Pins 2 & 3 closed |
| HDC disabled | JP14 | Pins 1 & 2 closed |
| í Parallel port address select 378H – 37FH | JP15 | Pins 1 & 2 closed |
| Parallel port address select 278H – 27FH | JP15 | Pins 2 & 3 closed |
| í Serial port 2 enabled | JP16 | Pins 1 & 2 closed |
| Serial port 2 disabled | JP16 | Pins 2 & 3 closed |
| í Game port enabled | JP17 | Pins 1 & 2 closed |
| Game port disabled | JP17 | Pins 2 & 3 closed |
| í Serial port 2 address select 2F8H – 2FFH | JP18 | Pins 1 & 2 closed |
| Serial port 2 address select 2E8H – 2EFH | JP18 | Pins 2 & 3 closed |
| IRQ9 enabled | JP26 | Closed |
| IRQ9 disabled | JP26 | Open |
| í NPU synchronous with CPU | JP27 | Pins 1 & 2 closed |
| NPU asynchronous with CPU | JP27 | Pins 2 & 3 closed |
| í On board video enabled | JP36 | Pins 1 & 2 closed |
| On board video disabled | JP36 | Pins 2 & 3 closed |

Continued on next page. . .

FORCOM TECHNOLOGY CORPORATION

FT - 3 8 6 B L

... continued from previous page

| DRAM CONFIGURATION | | |
|--------------------|--------------|--------------|
| Size | Bank 0 | Bank 1 |
| 512KB | (2) 256K x 9 | None |
| 1MB | (2) 256K x 9 | (2) 256K x 9 |
| 2MB | (2) 1M x 9 | None |
| 4MB | (2) 1M x 9 | (2) 1M x 9 |
| 8MB | (2) 4M x 9 | None |
| 16MB | (2) 4M x 9 | (2) 4M x 9 |

Note: The location of banks 0 & 1 is unidentified.

| VIDEO MEMORY CONFIGURATION |
|--|
| Note: Board accepts 256KB/512KB/1MB video memory. The size of the chips is unidentified. |